

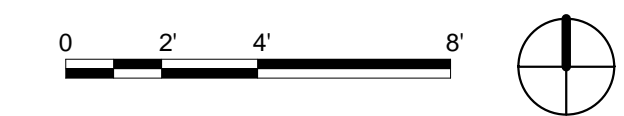
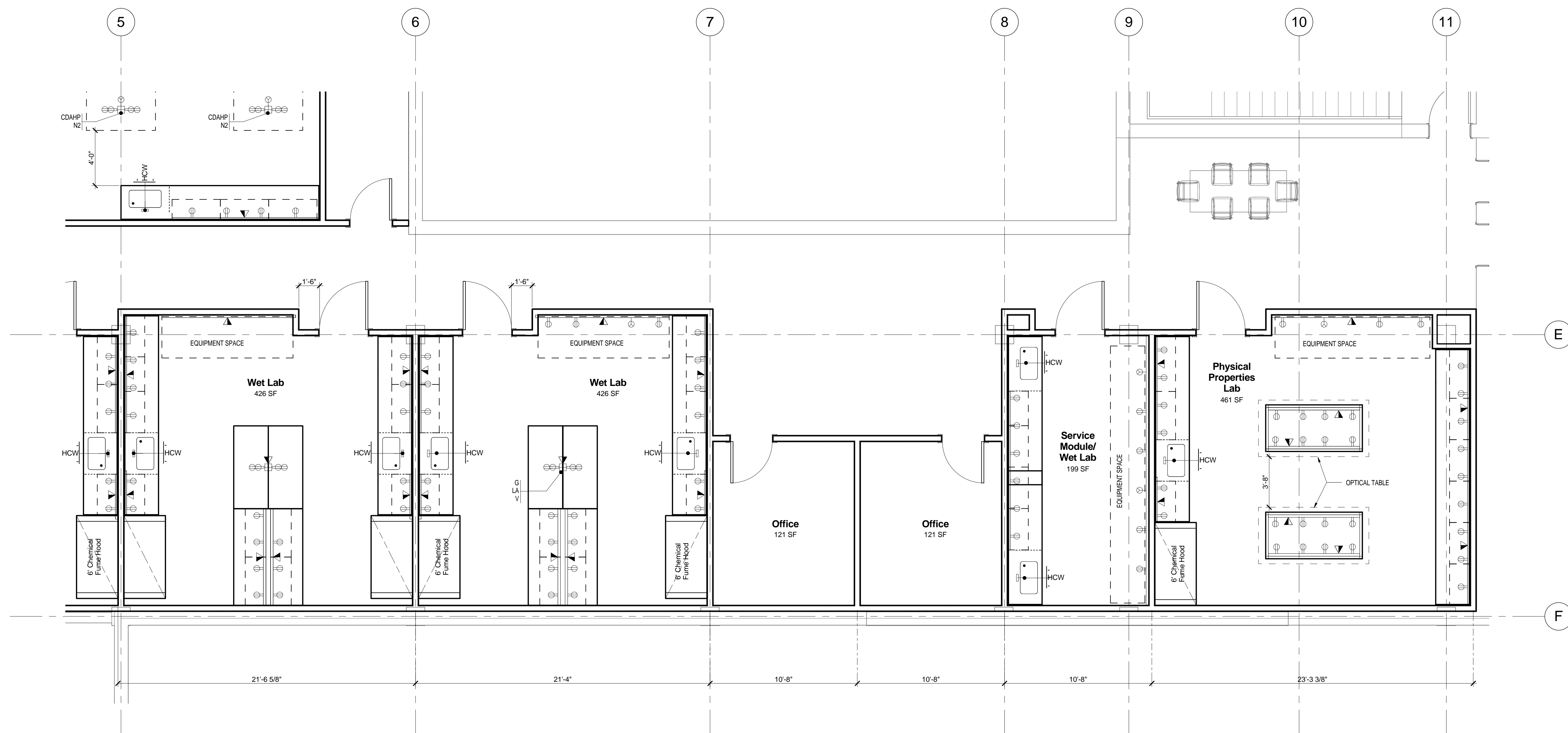
**HDR Architecture, Inc. / THA Architecture, Inc.**

HDR | 1001 SW 5th Avenue | Suite 1900 | Portland, Oregon 97204 | 503.423.3800  
 THA | 733 SW Oak Street | Suite 100 | Portland, Oregon 97205 | 503.227.1254

**UO LISB**

Lewis Integrative Sciences Building  
 Design Development  
 October 2009

**1.0 - LEVEL 0**  
 Overall Plan



**HDR Architecture, Inc. / THA Architecture, Inc.**

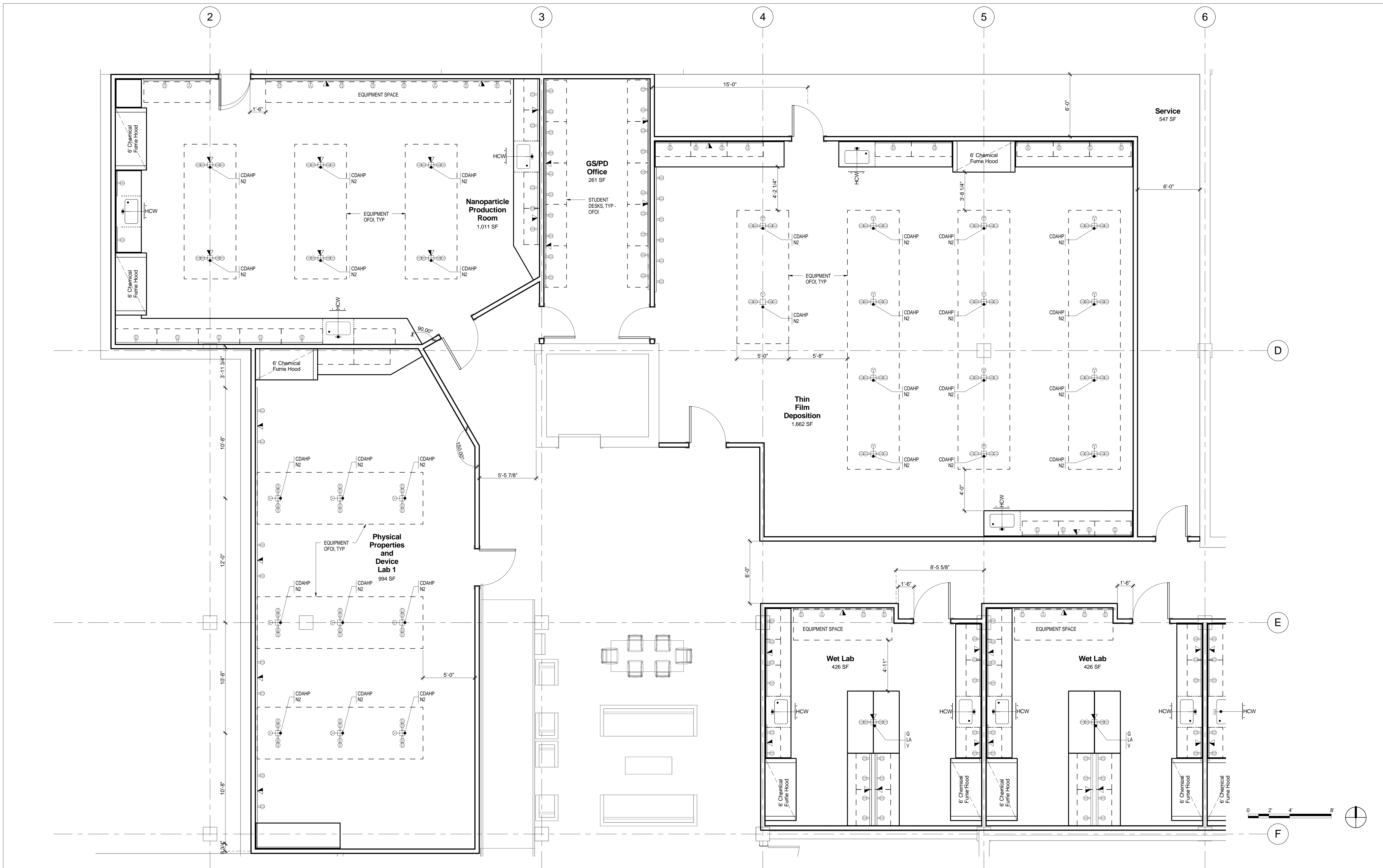
HDR | 1001 SW 5th Avenue | Suite 1900 | Portland, Oregon 97204 | 503.423.3800  
 THA | 733 SW Oak Street | Suite 100 | Portland, Oregon 97205 | 503.227.1254

**UO LISB**  
 Lewis Integrative Sciences Building

Design Development  
 October 2009

**1.0.2**

Instrumentation Lab - East



**HDR Architecture, Inc. / THA Architecture, Inc.**

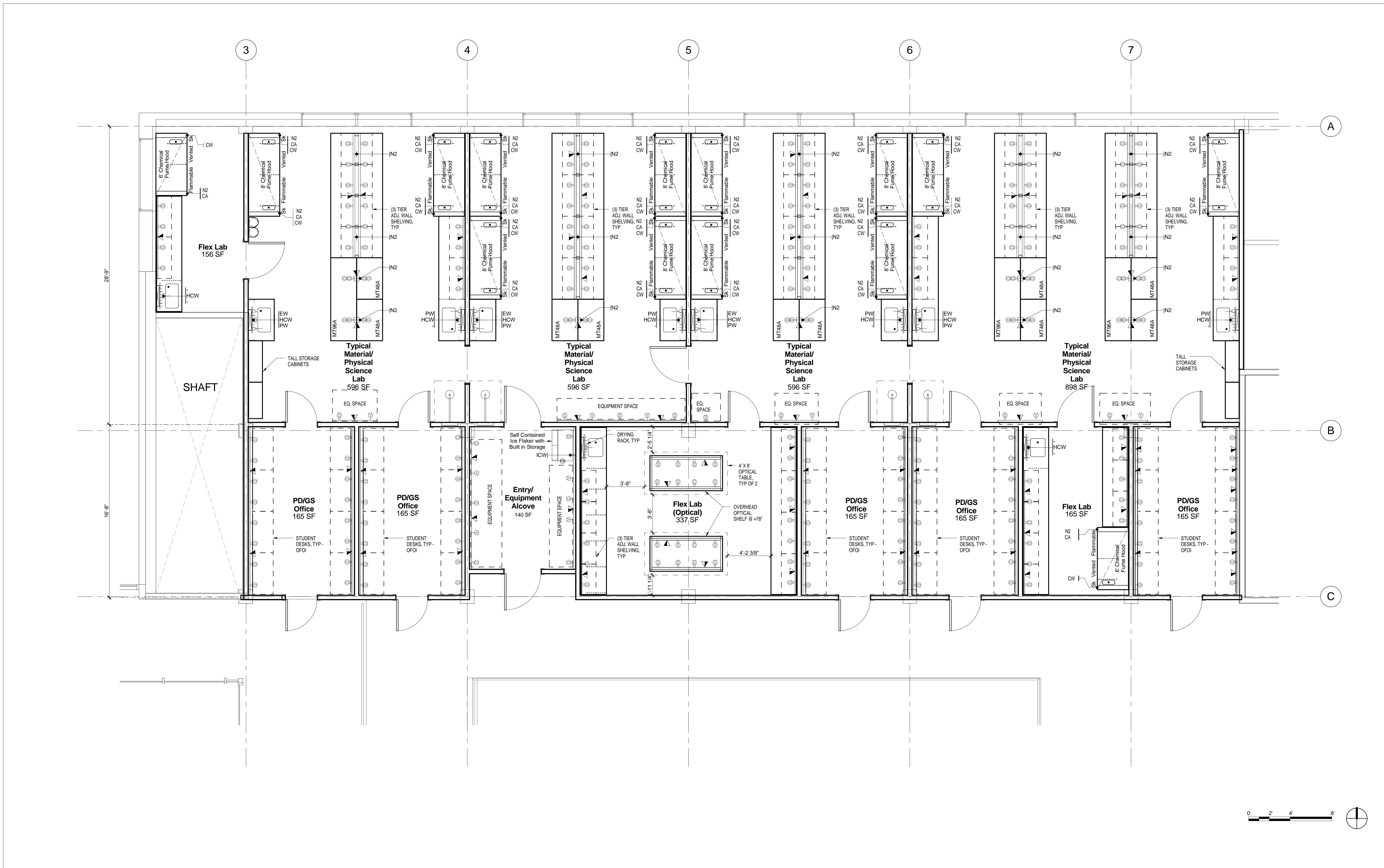
HDR | 1001 SW 5th Avenue | Suite 1900 | Portland, Oregon 97204 | 503.423.3800  
 THA | 733 SW Oak Street | Suite 100 | Portland, Oregon 97205 | 503.227.1254

**UO LISB**  
 Lewis Integrative Sciences Building

Design Development  
 October 2009

**1.0.1**

Instrumentation Lab - West



HDR Architecture, Inc. / THA Architecture, Inc.

HDR | 1001 SW 5th Avenue | Suite 1900 | Portland, Oregon 97204 | 503.423.3800  
 THA | 733 SW Oak Street | Suite 100 | Portland, Oregon 97205 | 503.227.1254

**UO LISB**  
 Lewis Integrative Sciences Building

Design Development  
 October 2009

**1.4 - LEVEL 4**  
 Material/Physical Sciences