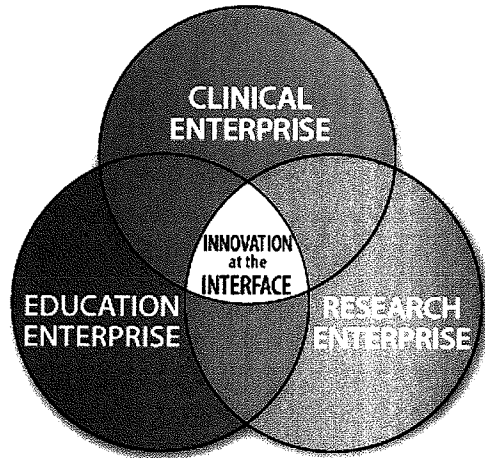
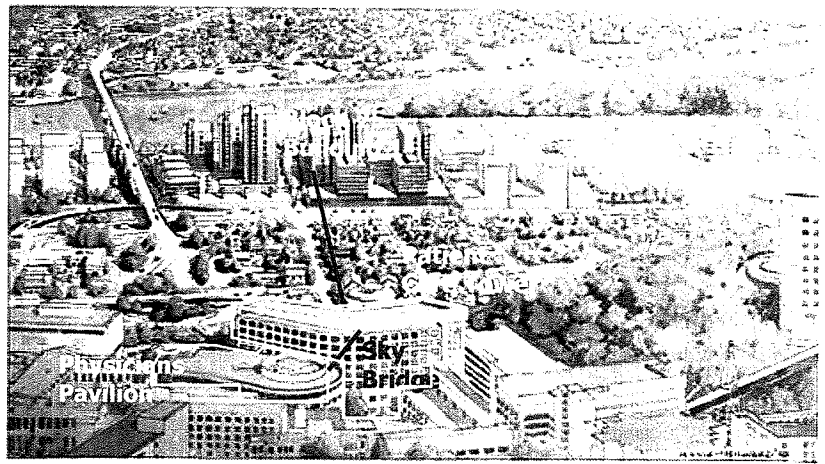


# Integrating the Missions

## OHSU



## River Campus and Marquam Hill



63

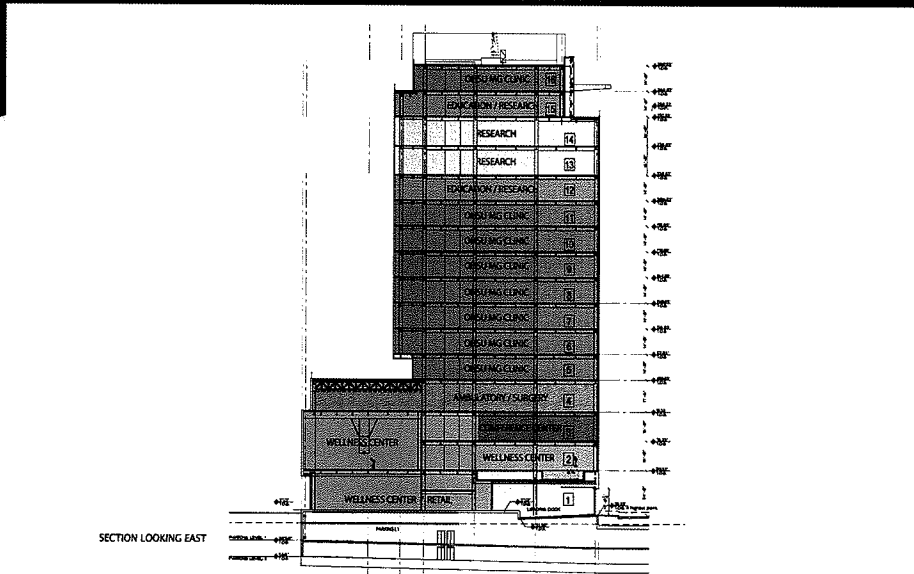


Photo by Tim Jewitt

Center for Health  
& Healing  
400,000 sq. ft.



## Center for Health and Healing



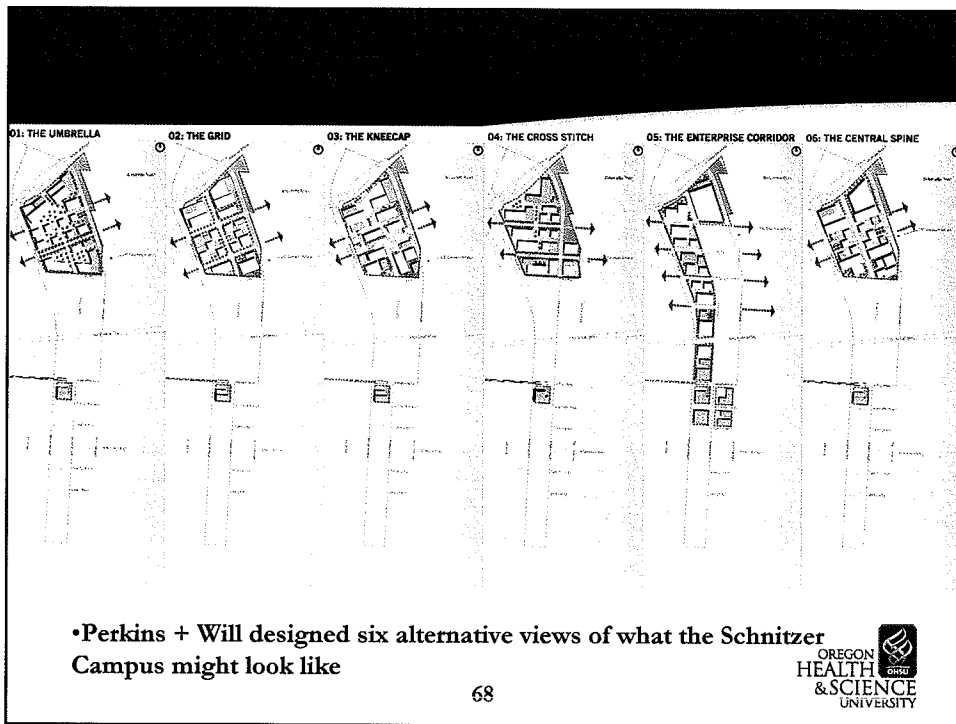
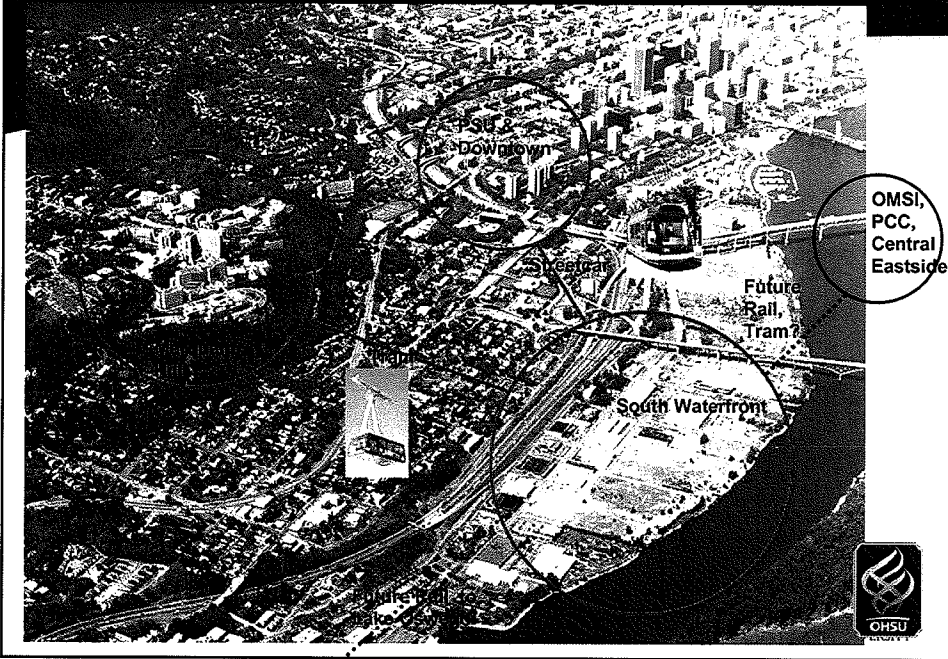
OHSU RIVER CAMPUS - BUILDING ONE

NORTH MACADAM REDEVELOPMENT - PORTLAND, OREGON  
GBD Architects Incorporated - Gerding/Edlen Development - NOVEMBER 14, 2003

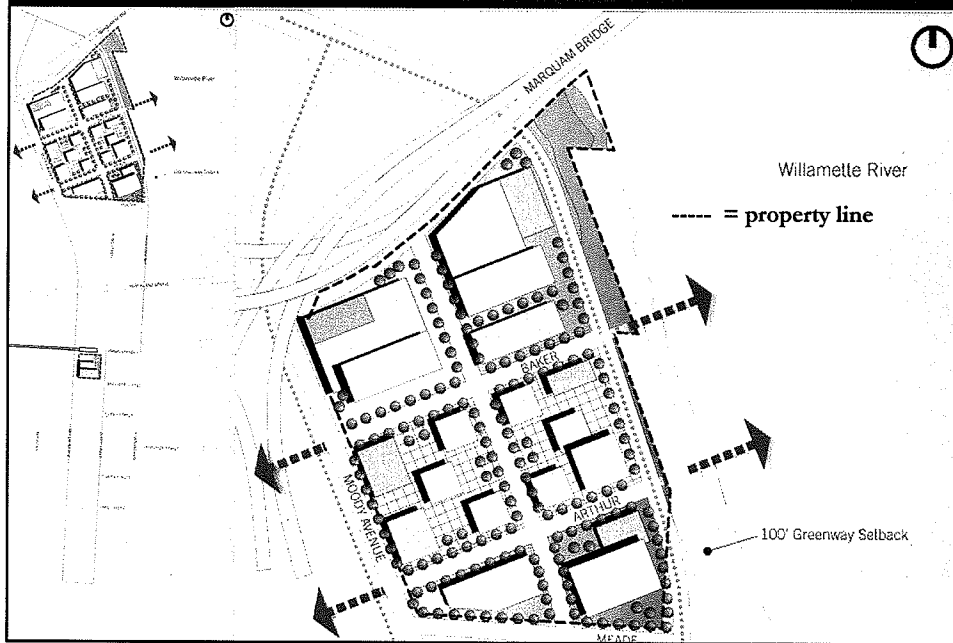
BLOCK 25



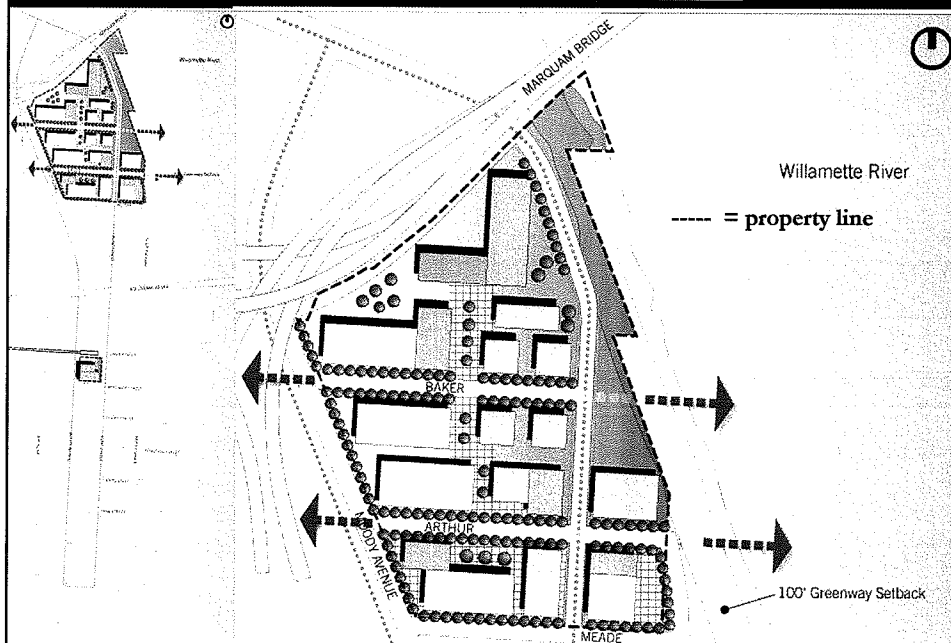
The South Waterfront and the Schnitzer Campuses: Partnerships and Connections



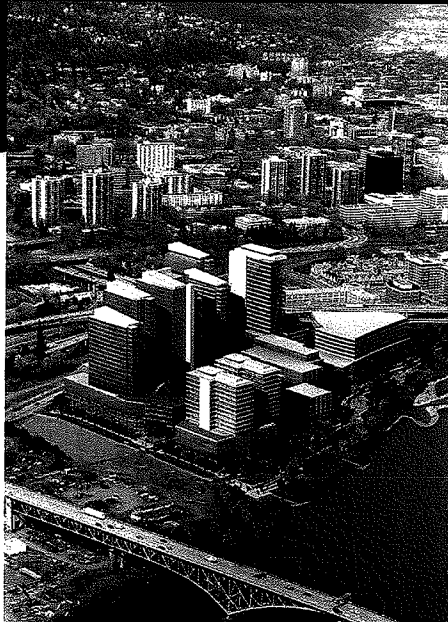
## 02: THE GRID



## 04: THE CROSS STITCH







## Schnitzer Campus Vision

73



## Strategic Planning: Breaking Down Silos



74



8-31-07 Draft Strategic Plan 2020  
Five-year strategic goals, strategies and tactics

- *Goal 1:* Be a great organization, diverse in people and ideas.
- *Goal 2:* Develop and retain a faculty that will collaborate to drive excellence and innovation across OHSU.
- *Goal 3:* Join others in developing policy and care delivery solutions that improve access to high-quality health care for all, especially Oregonians.
- *Goal 4:* Help meet Oregon's workforce needs in the health and science professions through innovative strategies such as regionalization, academic partnerships, distance learning and interdisciplinary approaches.
- *Goal 5:* Align OHSU enterprises to support sustainable innovation.
- *Goal 6:* Build financial wherewithal for the long-term advancement of all of our missions.

75



Goal 4: Help meet Oregon's workforce needs in the health and science professions through innovative strategies such as regionalization, academic and community partnerships, distance learning and interdisciplinary approaches.

Draft 8/31/07

- *Strategy 4.1* Develop Schnitzer Campus as an academic model of the future of interdisciplinary health care education.
- *Strategy 4.2* Enhance education delivery model.
- *Strategy 4.3* Develop and deepen community partnerships to deliver the educational mission.

76



## Strategic Planning: Environmental Assessment

### *Major Challenges to Building Sustainable Excellence*

- Tort cap –would result in additional insurance cost
- Medicaid payment reductions
  - IGTs
  - GME/IME
- Deferred maintenance
- Information technology infrastructure
- Competitive faculty compensation
- Strategic investment (Vision 2020)

77



## Integration of OHSU Educational Programs

- Pilot projects will inform Schnitzer Campus design development
- Potential areas of exploration (pilot):
  - Basic Science
  - Ethics/Professionalism/Palliative Care
  - Quality of Care/Clinical Decision Making
  - Community Service/Public & Global Health
  - Biostatistics
- Future partnerships with other institutions
  - Pre-health, science, & engineering
  - Early admission pipelines
  - Joint programs (e.g. Nursing, Medical Physics, Public Health, Health MBA, Health Informatics, Biomedical Engineering, ...)

78



## Opportunities for Horizontal Research Development

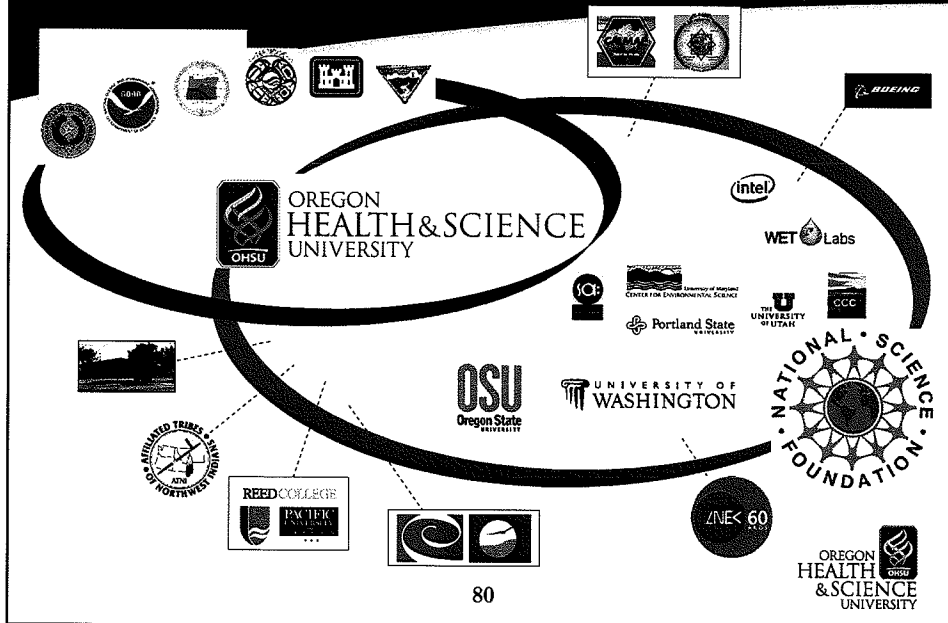
- Infectious Disease/Immunology
  - Group includes Acting Chair of Molecular Microbiology and Immunology, leaders of the Vaccine and Gene Therapy Institute, the Chief of the Division of Infectious Disease in Medicine, and investigators in Pediatrics and the VA.
- Neurosciences
  - The OHSU Brain Institute is a self-assembled group involving representatives of all of the institutes, Behavioral Neuroscience, the Hearing Center, and the leadership of Neurosurgery, Neurology, Psychiatry and CDRC.
- Interinstitutional Partnerships
  - ONAMI (nanotechnology)
  - OTRADI (drug discovery, initial focus on infection)
  - CMOP (NSF Center for Coastal Margin Observation & Prediction)

79



## Partnerships are Relationship Intensive

Example: OGI SOSE CMOP (Coastal Margin Observation and Prediction)



80

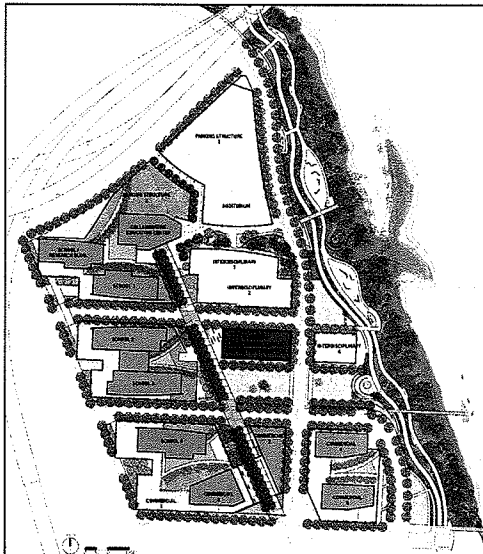


The Schnitzer Campus Vision: A Collaborative Environment that Fosters Interdisciplinary & Interinstitutional Health & Science Education and Research



Proposed OHSU Education Center and Virtual Hospital

The OHSU Education Center and Virtual Hospital Vision: OHSU SCHNITZER CAMPUS SITE PLAN



A central promenade runs through the campus from north to south that serves as a pedestrian, bike, and shuttle service thoroughfare. Cafes, bookstores, and other retail will be located on the ground floors of the tower podiums, encouraging a dynamic and varied street life. A formal landscaped common has been created to serve as a connection to the Willamette as well as an evocative connection to the ideals and ethics of a major academic institution.



The OHSU Education Center and Virtual Hospital

83

HEALTH & SCIENCE  
UNIVERSITY

- **Questions, Comments, Suggestions?**

84

OREGON  
HEALTH  
& SCIENCE  
UNIVERSITY