

Erb Memorial Union Expansion and Renovation
Campus Planning Committee – Check-in Meeting #3
April 25, 2013

Project Description

Since the project was last presented to the Campus Planning Committee in March 2012, a positive student referendum was achieved in Fall 2012. The project presented today is the result of a new approved student fee, the removal of the Concert Hall from the project's program and design and a reduced total project budget. The redesigned Erb Memorial Union project still includes substantial renovation of the 1950's wing of the building, including preservation of sections most compelling historically and architecturally, and demolition and replacement of the 1970's wing. The vision is to create a new university center by providing programs, services, and spaces that are fully aligned and support the academic mission and values of the institution.

The renovated EMU will promote engagement of campus constituencies—students, faculty, and staff—and provide a venue to welcome the public into our campus. It will support educational, social, and recreational initiatives that engage faculty and staff and spark the intellectual curiosity of students. The renovated EMU will host expanded activities during evenings and weekends, activate the heart of campus, and contribute to the overall residential quality of campus. The future EMU will play an elevated role in recruitment and retention of students, and will serve as the home base for student government and student multicultural programs, both occupying prominently featured spaces. The EMU will demonstrate high quality design and use of materials, and showcase sustainability and technology achievement in support of student scholarly expression. The new EMU will feature formal and informal public spaces that are welcoming to campus and community constituencies, and announce the EMU as the central hearth for campus.

In supplement to other current building uses, special attention will be directed to the design of the following functional spaces/areas:

- Student organizational space to include a variety of centers or suites, student union spaces, and shared student organization space that extends the building's capacity to support ASUO recognized student organizations.
- Expanded conference facilities to accommodate campus departmental or professional organization gatherings, as well as public conference use to generate income and help reduce reliance on student fees.
- Added meeting space for general student and campus department use.
- A computer lab and extended smart building infrastructure.
- Expanded retail foods and general retail space.
- A campus pub with food and beverage service appropriately placed within the building to facilitate social gatherings and celebrations commensurate with the building's heart of campus location.

EMU Expansion and Renovation Project – CPC Check-in #3 Meeting

- Public spaces commensurate with a major university building and campus university center adequate to support high volume daily use, large performances, conferences, exhibits, and display of art.

The existing EMU is approximately 223,000 gross square feet and the proposed EMU Expansion and Renovation is anticipated to be 233,000 gross square feet total building project.

Campus Plan Policies and Patterns

The following pages contain a list of *Campus Plan* policies and patterns. As described in the Plan, patterns in **bold typeface** must be considered for every project. Every pattern in this list must be discussed with the user group during the design process, and designs may be evaluated using this list as a tool.

Policies:

POLICY 2: OPEN-SPACE FRAMEWORK – Designated open spaces, pedestrian pathways, trees

POLICY 3: DENSITIES

POLICY 4: SPACE USE AND ORGANIZATION

POLICY 5: REPLACEMENT OF DISPLACED USES – Craft Center’s outdoor courtyard

POLICY 6: MAINTENANCE AND BUILDING SERVICE – Service area and access

POLICY 7: ARCHITECTURAL STYLE AND HISTORIC PRESERVATION

POLICY 8: UNIVERSAL ACCESS

POLICY 9: TRANSPORTATION – pedestrians and bikes

POLICY 10: SUSTAINABLE DESIGN

POLICY 11: PATTERNS

POLICY 12: DESIGN AREA SPECIAL CONDITIONS – Design Area E, Student Services and Academics

Patterns:

LARGE SCALE CAMPUS:

Universal Access

Open-space Framework

Outdoor Classroom

Promenade

Open University

Sustainable Development

Welcoming to All

Campus Trees

Good Neighbor

TRANSPORTATION:

Local Transport Area

Paths and Goals

Pedestrian Pathways

Shielded Parking and Service Areas

Bike Paths, Racks, and Lockers

Road Crossings

Spillover Parking

EMU Expansion and Renovation Project – CPC Check-in #3 Meeting

SITE ARRANGMENT:

Site Repair

Existing Uses/Replacement

South Facing Outdoors

Main Building Entrance

Seat Spots

Tree Places

Accessible Green

Public Outdoor Room

Activity Nodes

Use Wisely What We Have

Positive Outdoor Space

Quiet Backs

Building Complex

Family of Entrances

Water Quality

Local Sports

Small Public Squares

BUILDING DESIGN:

Four-story Limit

Building Character & Campus Context

Operable Windows

Future Expansion

Wholeness of Project

Quality of Light

Building Hearth

Public Gradient

Fabric of Departments

Faculty-Student Mix

Enough Storage

Access to Water

Architectural style

Arcades

Flexibility and Longevity

Pools of Light

Wings of Light

Organizational Clarity

Office Connections

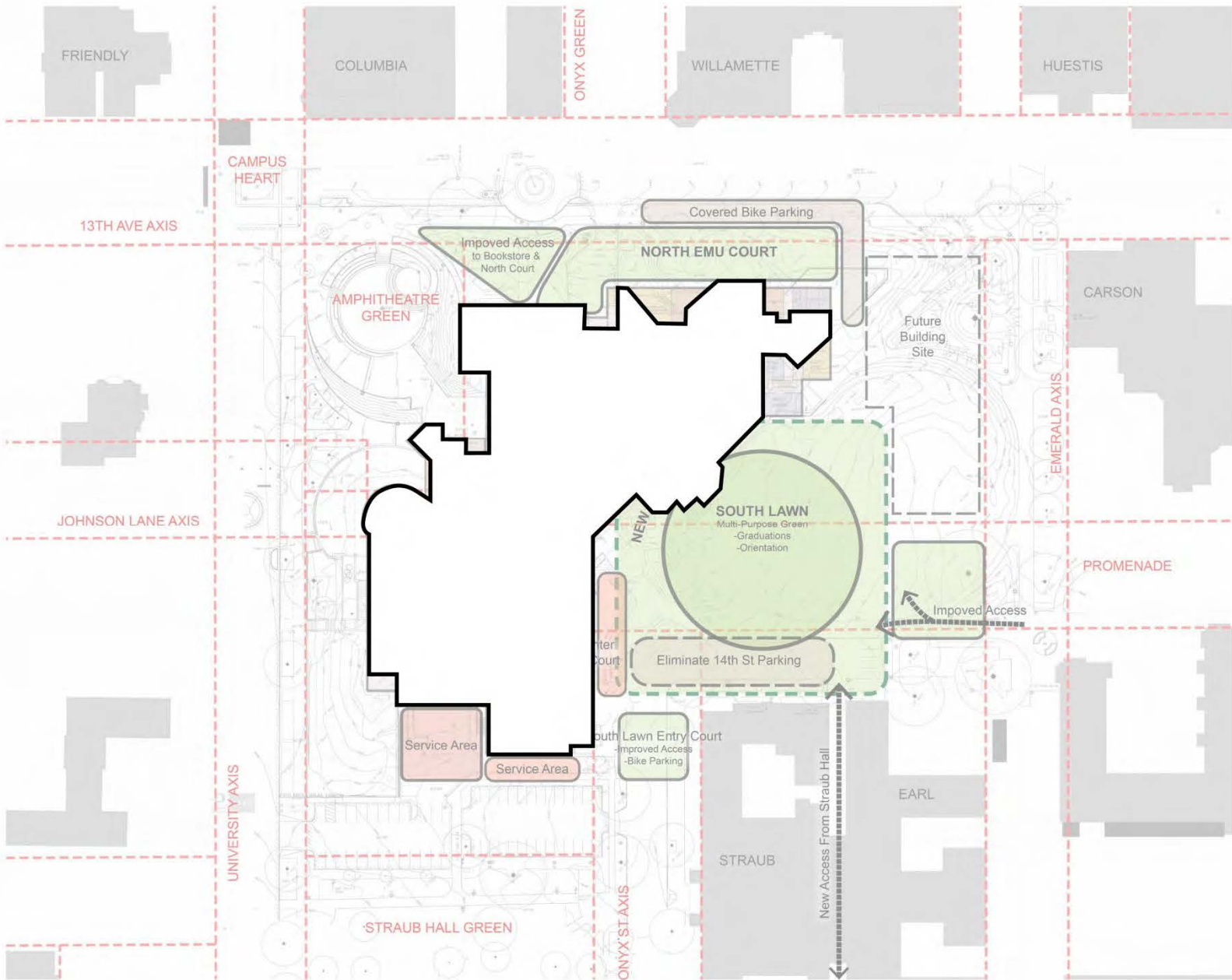
Classroom Distribution

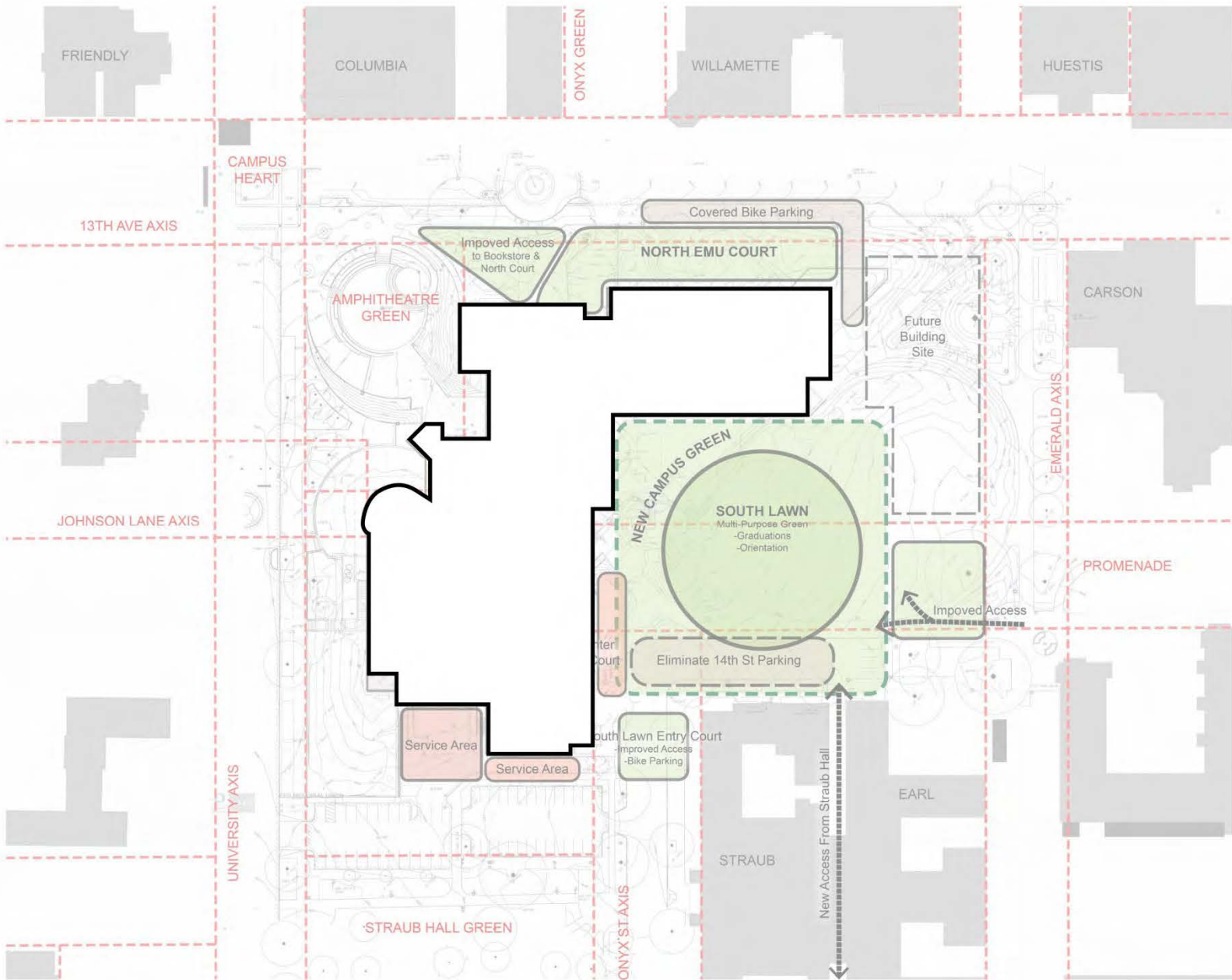
No Signs Needed

Places to Wait

Connected Building

Sitting Walls

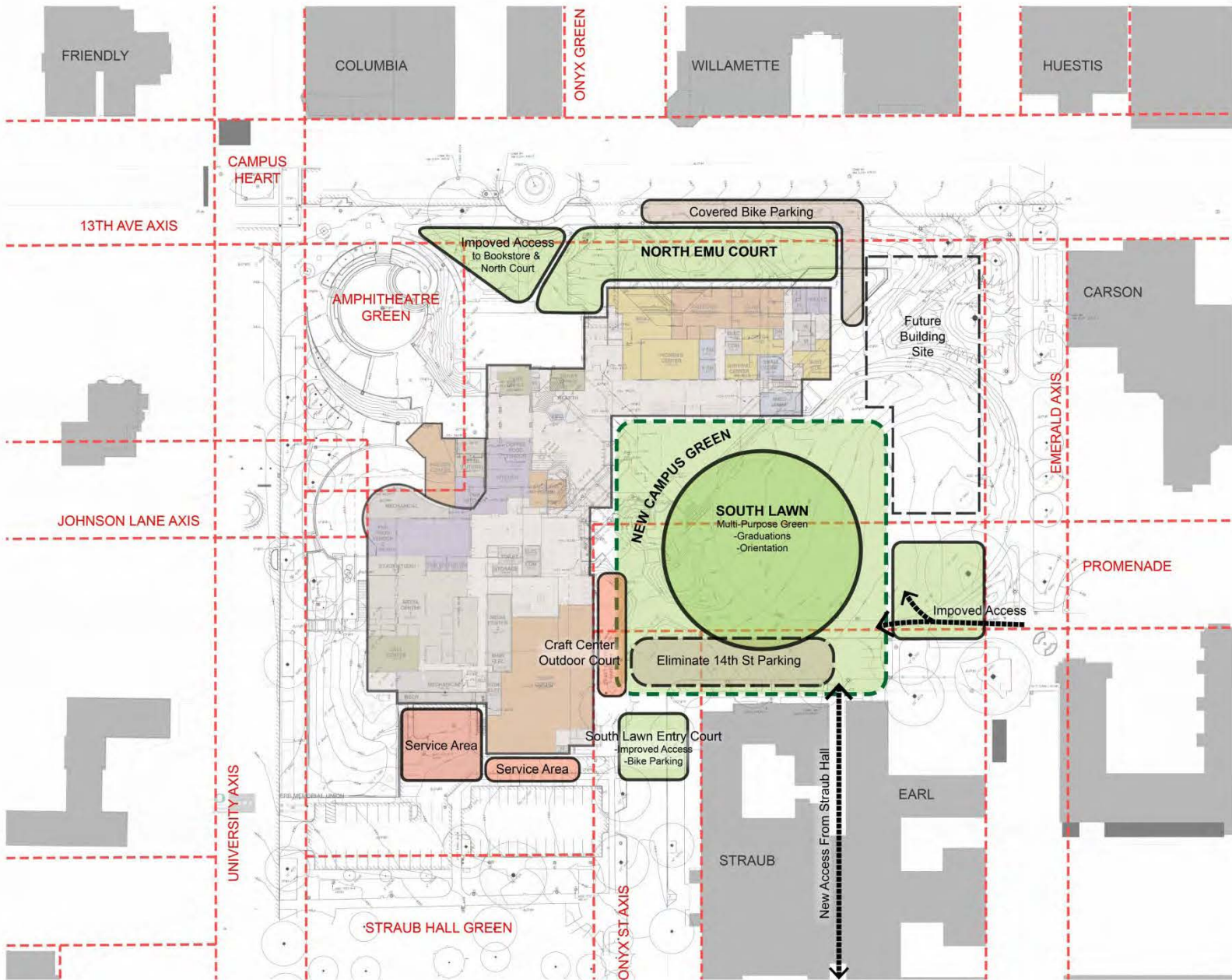





ERB MEMORIAL UNION
 ■ 100% SCHEMATIC DESIGN
 ■ 2012.05.18


 L002
 SITE PLAN

PROPOSED FOOTPRINT






ERB MEMORIAL UNION
 ■ 100% SCHEMATIC DESIGN
 ■ 2012.05.18


 15' 30' 45' 60'
 SITE PLAN  **L002**

PROPOSED SITE OPTIONS



NORTHWEST APPROACH



EAST FROM LAWN



SOUTH LAWN OPTION A



SOUTH LAWN OPTION B