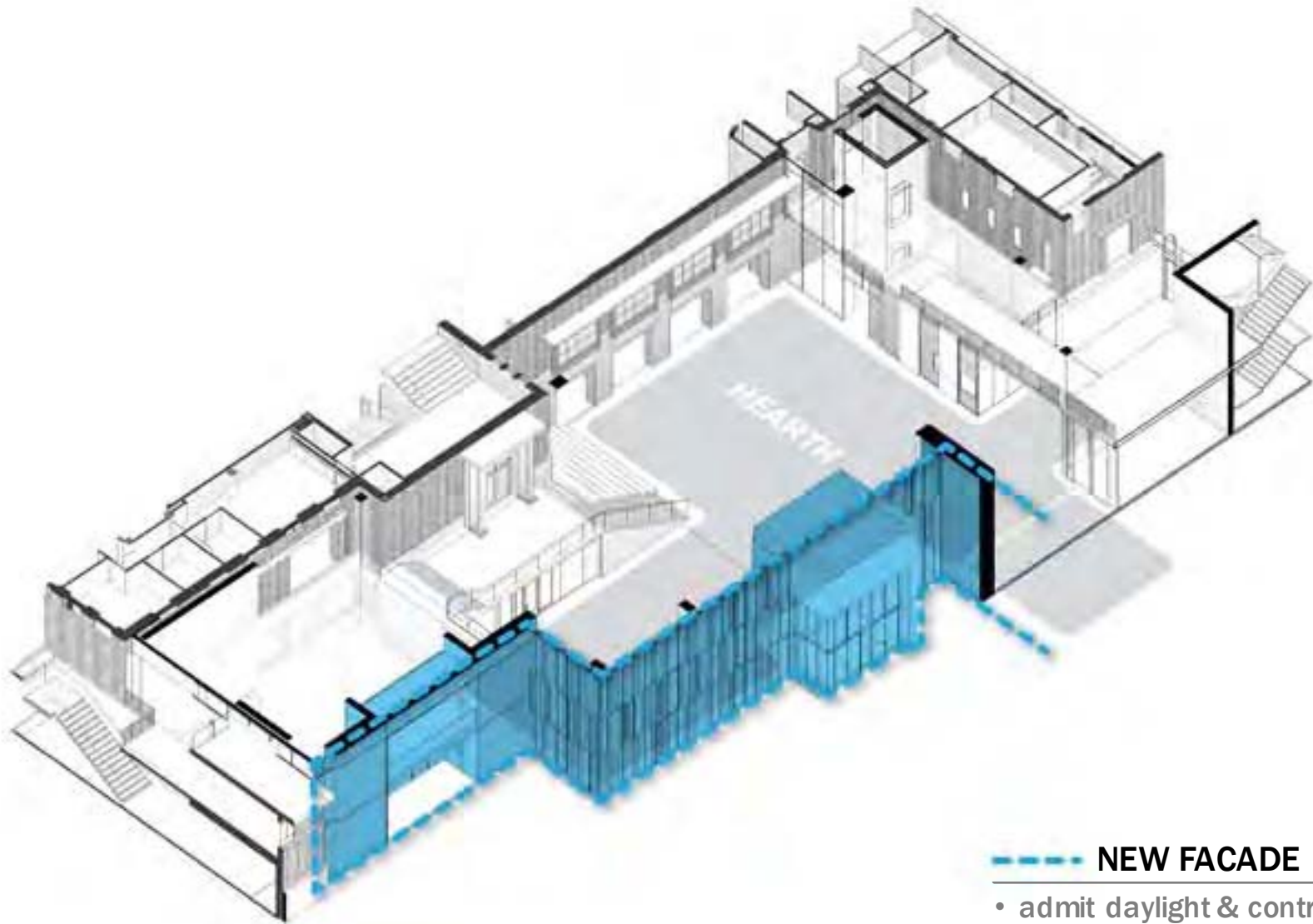


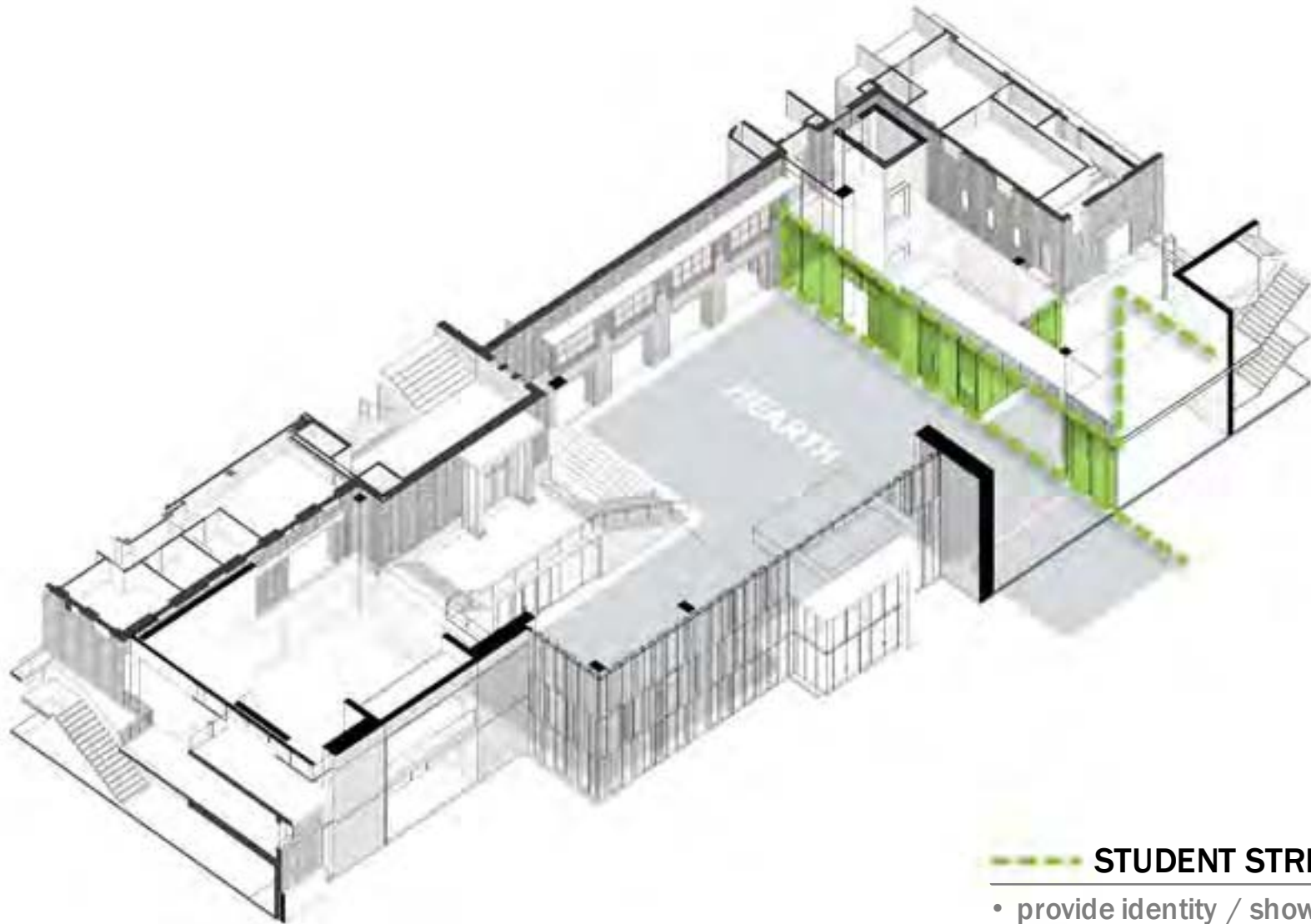
# **PUBLIC SPACES – INTERIOR DEVELOPMENT**

**HEARTH**



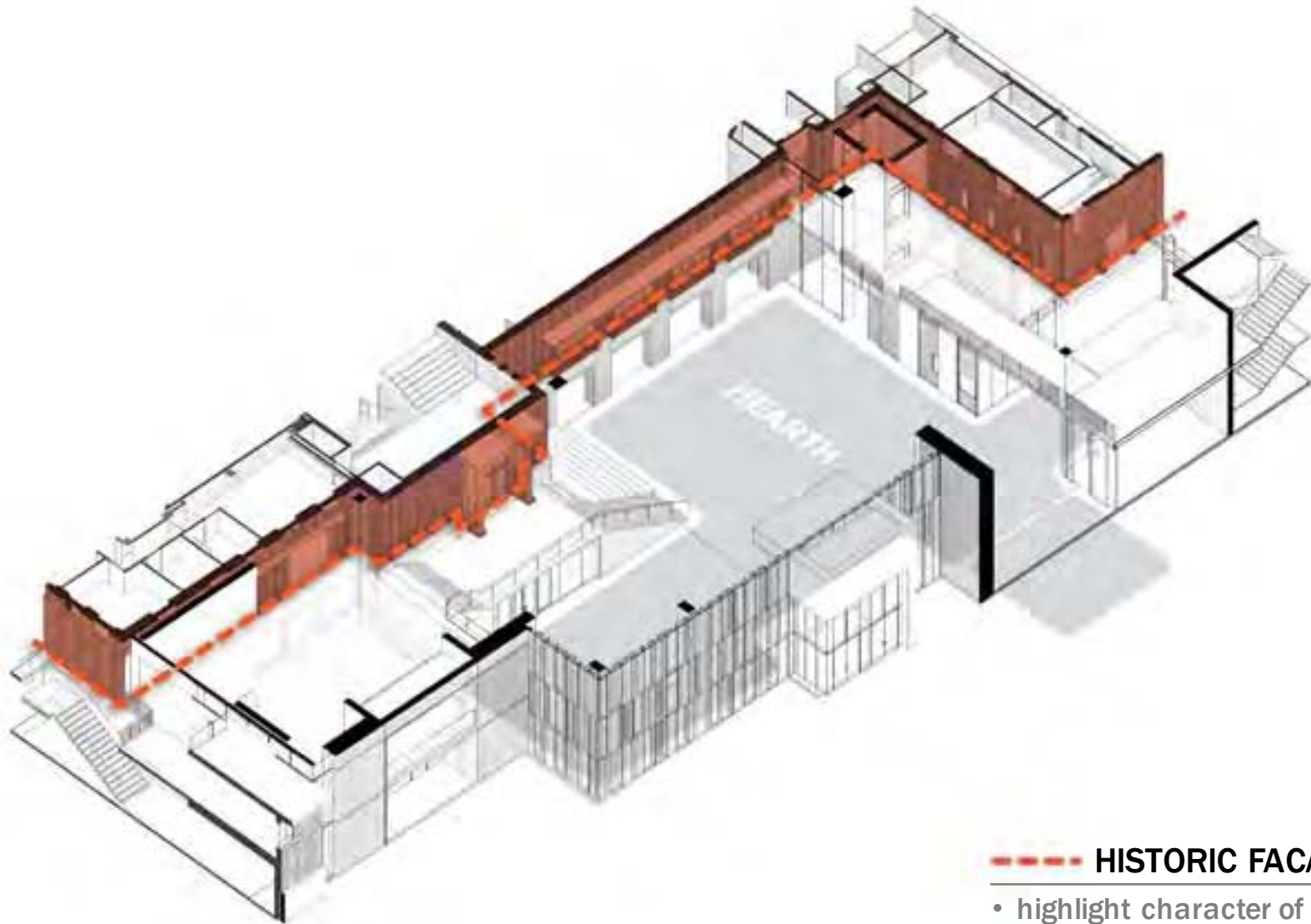
**NEW FACADE**

- admit daylight & control glare
- connect / views to exterior



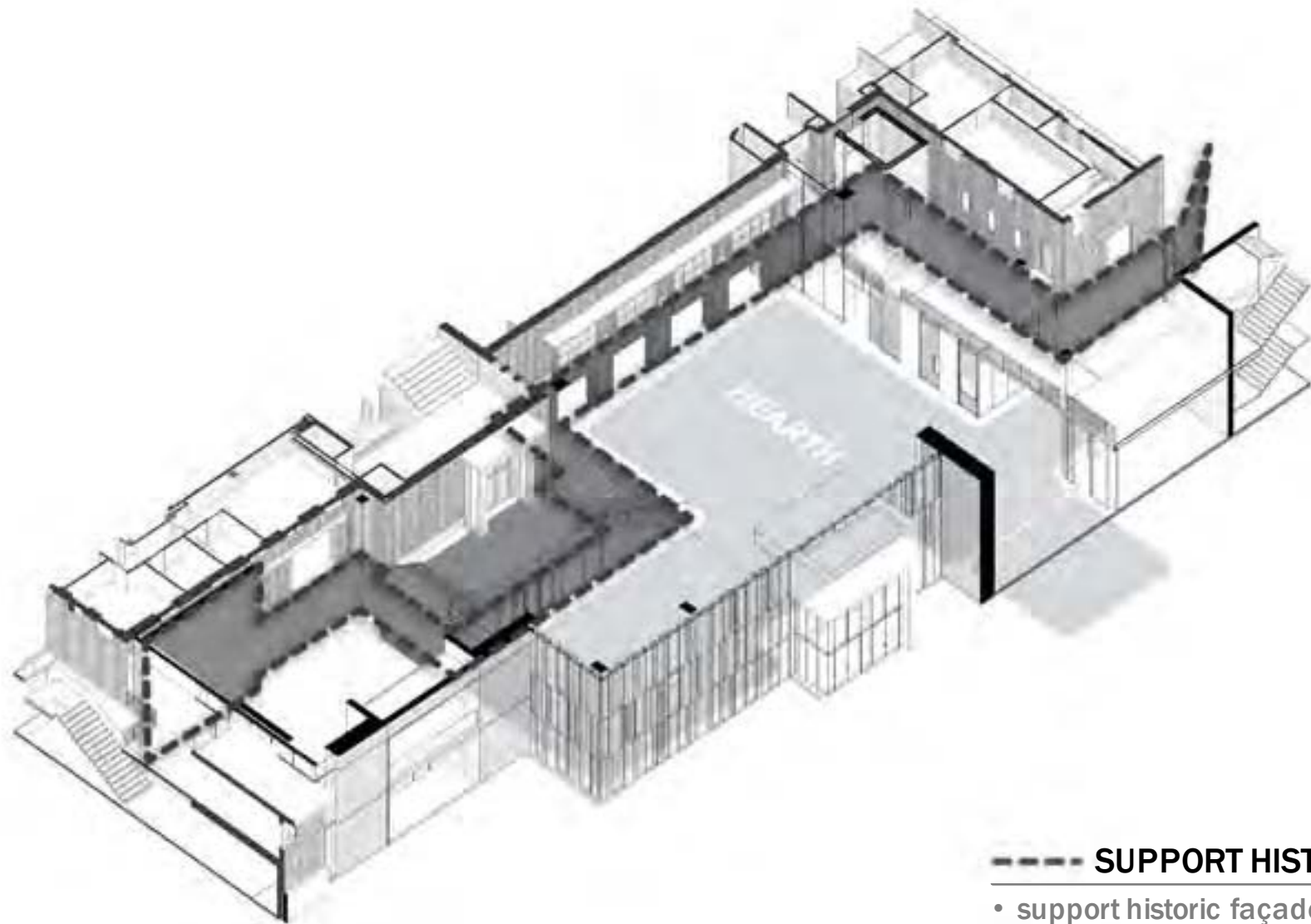
**STUDENT STREET**

- provide identity / showcase student activities
- wayfinding
- acoustic control
- allow daylight into offices / views out



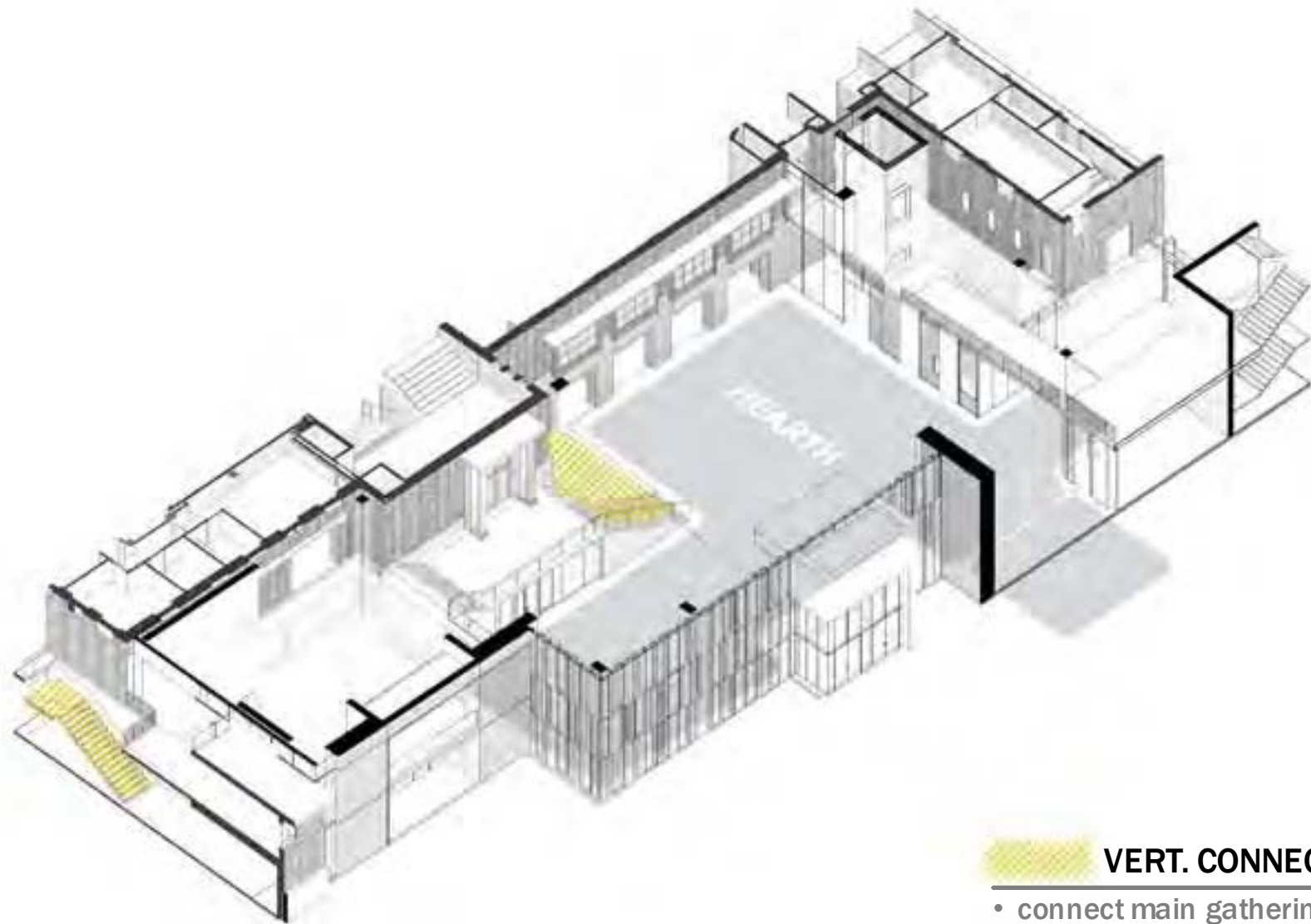
**--- HISTORIC FACADE**

- highlight character of historic facade



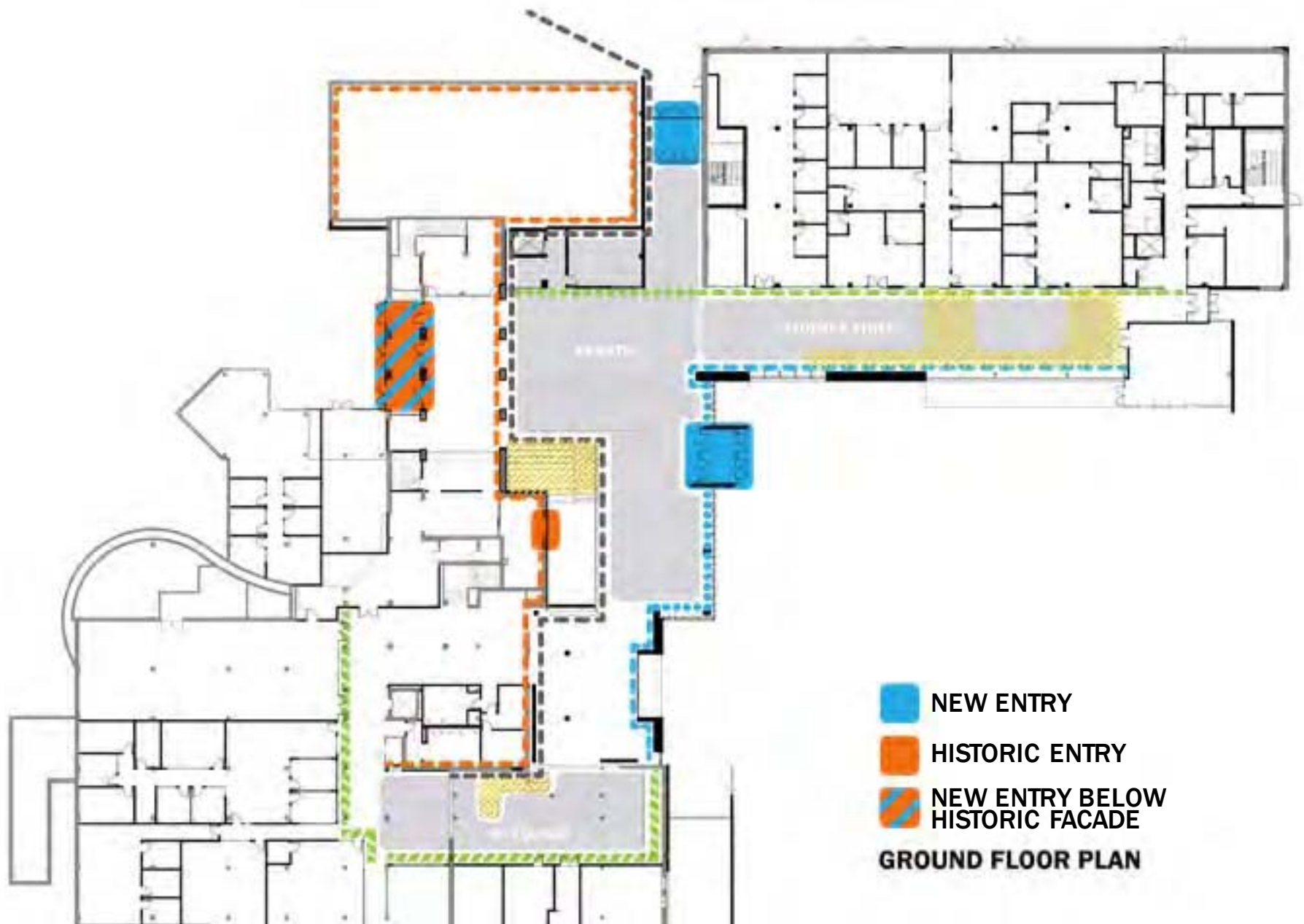
--- **SUPPORT HISTORIC**

- support historic façade structurally and architecturally
- define edge of new gathering / social space



 **VERT. CONNECTIONS**

- connect main gathering / social spaces (hearth, student street, O lounge) with other levels

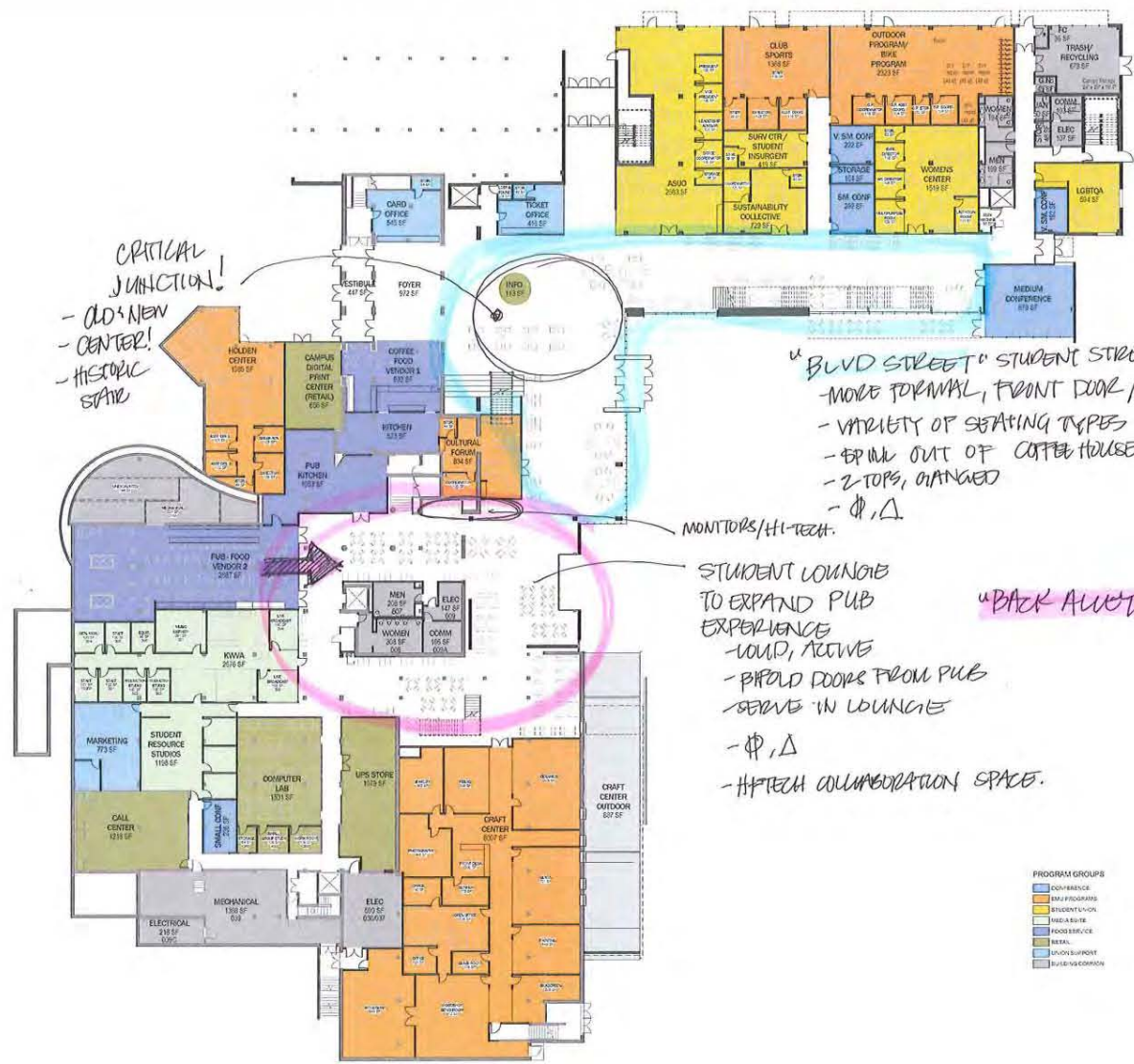


- NEW ENTRY
- HISTORIC ENTRY
- NEW ENTRY BELOW HISTORIC FACADE

**GROUND FLOOR PLAN**



# PLANS



CRITICAL JUNCTION!  
 - OLD + NEW  
 - CENTER!  
 - HISTORIC STATE

"BLVD STREET" STUDENT STREET  
 - MORE FORMAL, FRONT DOOR / LOBBY  
 - VARIETY OF SEATING TYPES & CONFIGURATION!  
 - BRING OUT OF COFFEE HOUSE ~ FISHERVILLE BATHER THAN TAYLOR LOUNGE  
 - Z-TOPS, CHANGED  
 -  $\Phi, \Delta$

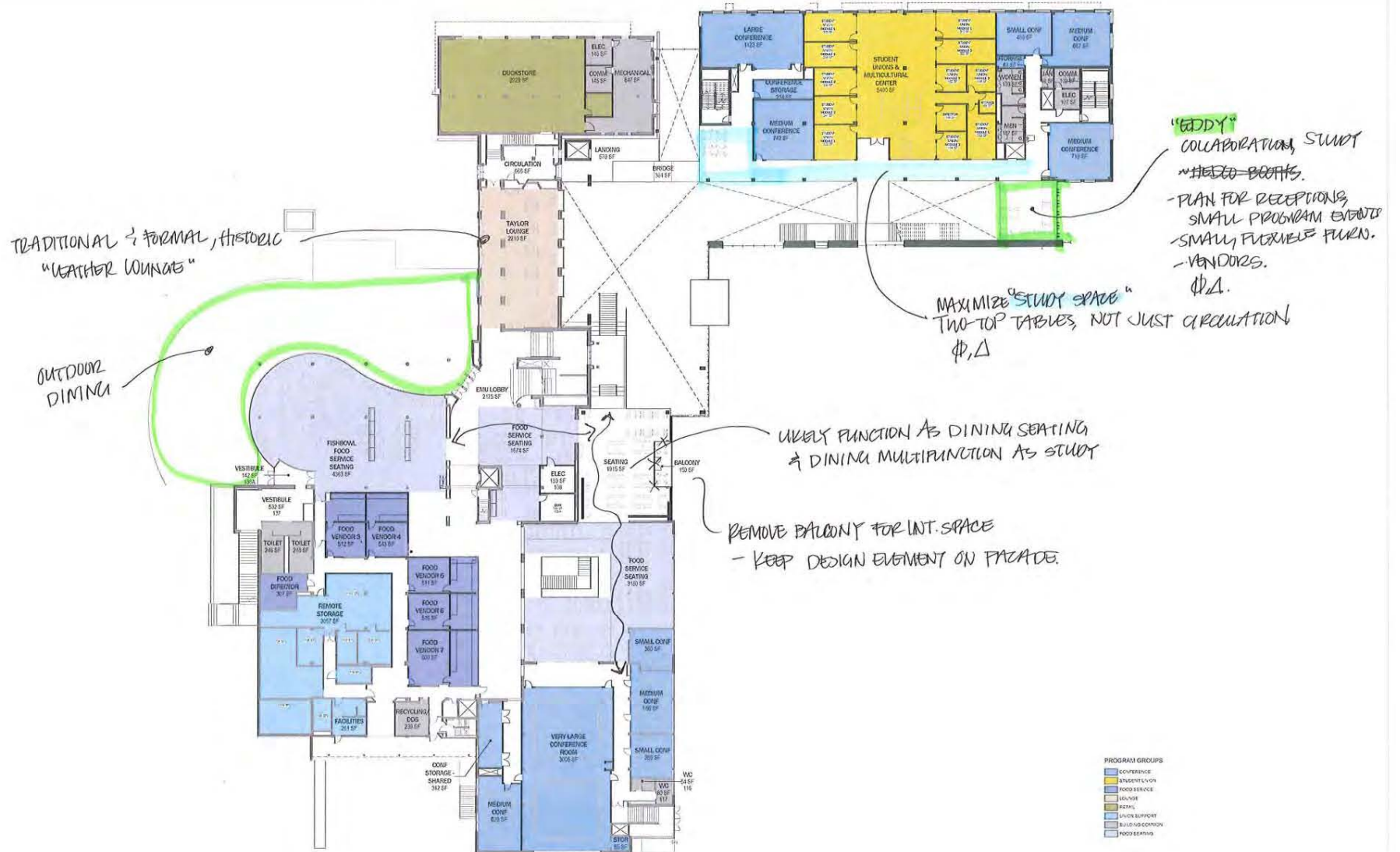
MONITORS/HI-TECH.  
 STUDENT LOUNGE TO EXPAND PUB EXPERIENCE  
 - LOUD, ACTIVE  
 - PIPED DOORS FROM PUBS  
 - SEAT IN LOUNGE  
 -  $\Phi, \Delta$   
 - HI-TECH COLLABORATION SPACE.

"BACK ALLEY"

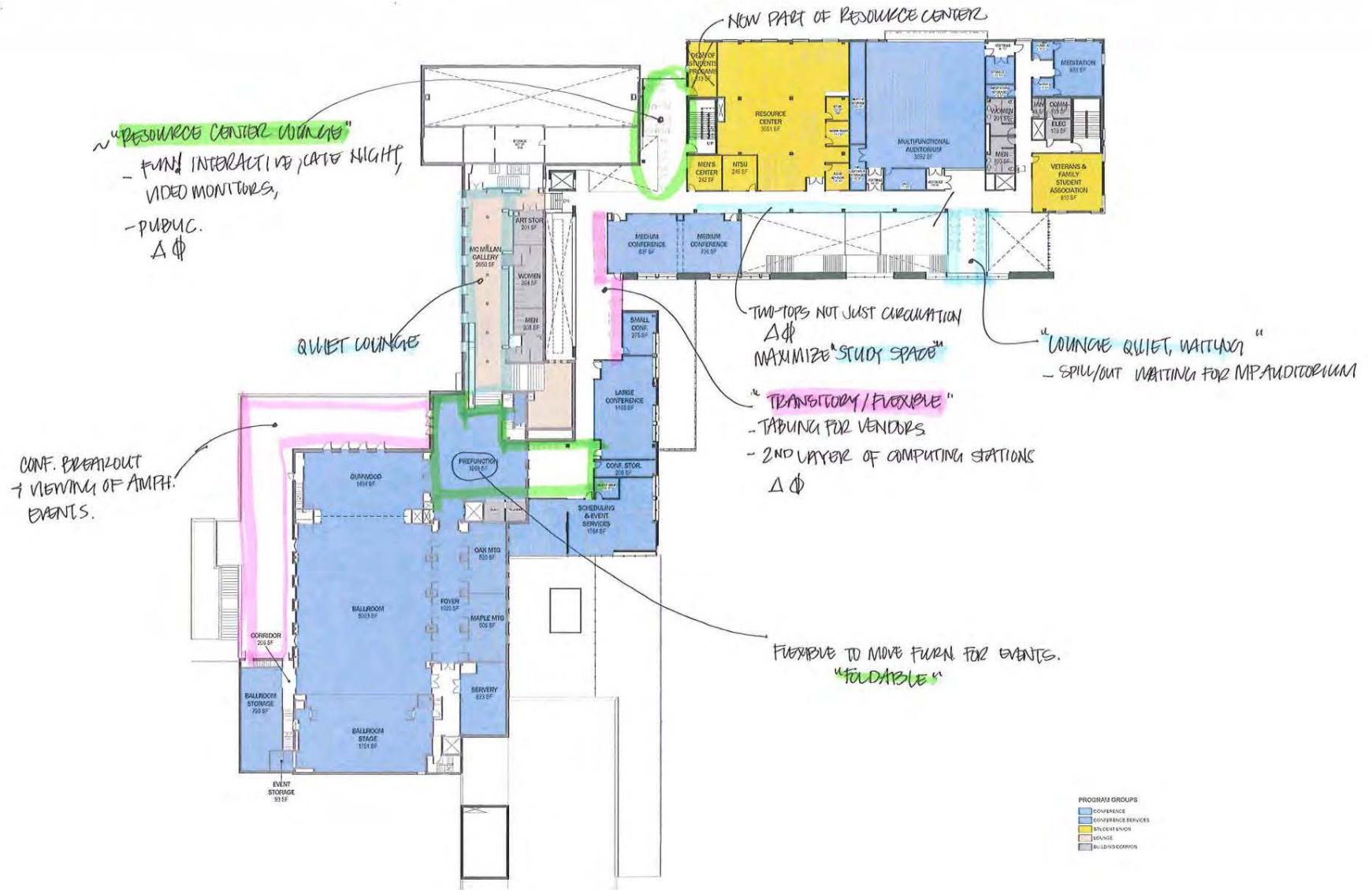
PROGRAM GROUPS

|                    |
|--------------------|
| COFFEEHOUSE        |
| OFFICE PROGRAMS    |
| STUDENT VOL        |
| MEDIA EDIT         |
| FOODSERVICE        |
| RETAIL             |
| UNIVERSITY SUPPORT |
| BUILDING COMMON    |

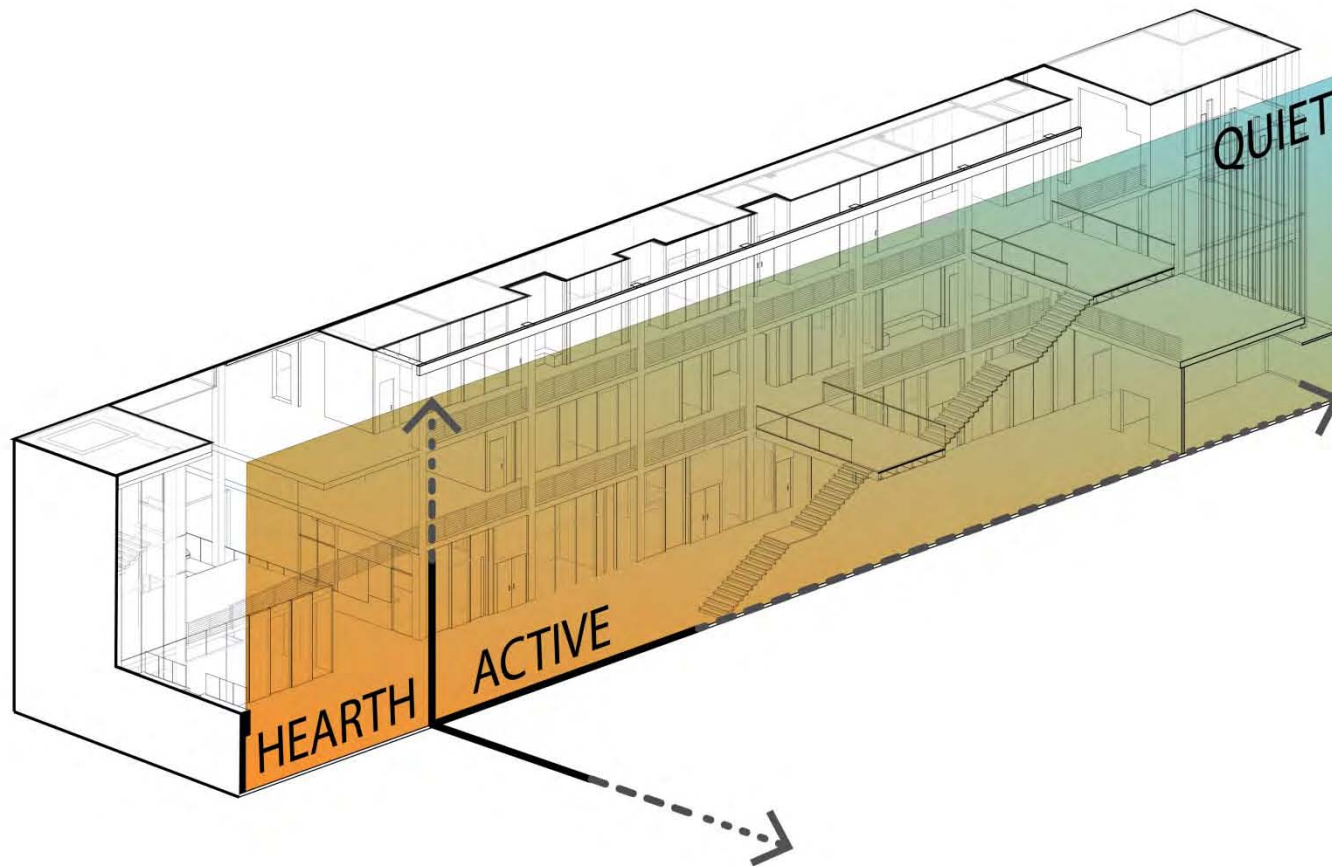
GROUND FLOOR PLAN – PUBLIC SPACE DIAGRAM



FIRST FLOOR PLAN – PUBLIC SPACE DIAGRAM



SECOND FLOOR PLAN – PUBLIC SPACE DIAGRAM



PUBLIC SPACE DIAGRAM

# **INTERIOR VIEWS**



HEARTH – PERSPECTIVE FROM 2<sup>ND</sup> FLOOR



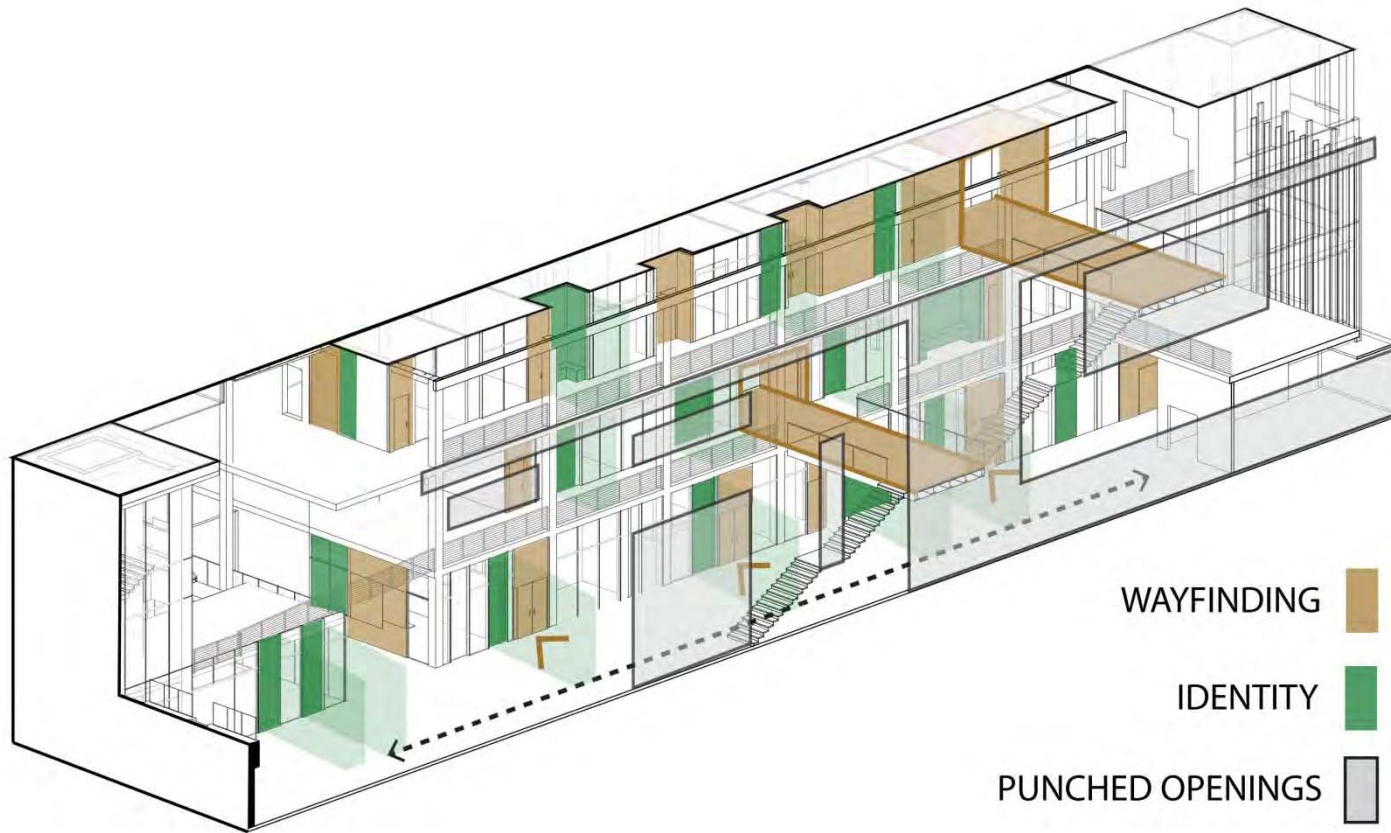
HEARTH – PERSPECTIVE FROM NORTH ENTRY





HEARTH – PERSPECTIVE FROM WEST BREEZEWAY

# **STUDENT STREET**



STUDENT STREET – AXON DIAGRAM



STUDENT STREET – PERSPECTIVE FROM 2<sup>ND</sup> FLOOR BRIDGE



STUDENT STREET – PERSPECTIVE FROM 2<sup>ND</sup> FLOOR TOWARDS SE