

**Project Name** UO Erb Memorial Union Renovation and Expansion  
**Project Number** 110451  
**Purpose** Subject Area Committee Meeting – Craft Center  
**Location** Craft Center, Erb Memorial Union

<b>Attendees</b>	<b>Name</b>	<b>Organization</b>
	<b>Subject Area Committee:</b>	
	Diane Hoffman	Craft Center
	Jeff Weitzel	Craft Center
	Tim Jarvis	Craft Center
	Laura	Craft Center
	Rena Kowitz	Craft Center
	<b>EMU User Group:</b>	
	Gregg Lobisser	
	Wendy Polhemus	
	Dan Geiger	
	<b>Design Team:</b>	
	Tammy Jow	AC Martin
	Nathan Burton	SERA
	Bob Murrin	AC Martin
	Christopher King	AC Martin

## 1.0 DISCUSSION

### 1.1 Floor Plan Review

- 1.1.1 Ceramics and Glass Studios require the adjacency to Outdoor Spaces. The Woodshop can be remote from outdoor access.
- 1.1.2 Move Remote Storage to the north of the plan.
- 1.1.3 Craft Center fills the south portion of the block in a “square block” rather than the L-shape currently shown in the plans.
- 1.1.4 Move the Craft Center entrance to align with the axis of the east-west cross circulation corridor.
- 1.1.5 Display areas can be provided along the length of the north-south corridor to increase the visibility of the Craft Center.

### 1.2 Outdoor Areas

- 1.2.1 The Craft Center staff prefers that the roof covering be pulled away from the street to prevent people from jumping onto it.
- 1.2.2 The height of the roof covering will need to be studied considering the exterior building elevation and equipment requirements that will be located below the roof covering.
- 1.2.3 Gregg adds that the character of the roof covering should be similar to other green roof coverings throughout campus.
- 1.2.4 The Craft Center staff likes the existing brick site wall along University Street.

### 1.3 Floors for Outdoor Areas

- 1.3.1 The Craft Center staff commented that the suggestion for recycled brick paving will not work.
- 1.3.2 Concrete floors will work.
- 1.3.3 Silica and other chemicals will be washed onto the floor.
- 1.3.4 Floor drains are required along with hose bibs.

### 1.4 Delivery of Materials and Access

- 1.4.1 It would be ideal to have access from the loading dock for delivery of large, heavy materials directly into the Outdoor Area.
- 1.4.2 A hydraulic lift could be provided to transport materials from the loading dock to the Outdoor Area. This option may be cost prohibitive.
- 1.4.3 The interior loading dock walls need to be reworked to create better access and circulation to the existing freight elevator.
- 1.4.4 Could a ramp be added from the loading dock to the outdoor space? Concern was expressed by the Craft Center staff regarding the weight of materials going down a ramp. Also, a ramp is not dependent on electricity of technology to work.
- 1.4.5 Can deliveries be made from the amphitheater entrance? The Craft Center staff commented that the distance is too far to move large, heavy materials from the amphitheater to the Craft Center.

### 1.5 Exiting the Outdoor Space

- 1.5.1 One exit can be provided through the addition of a stair or ramp.
- 1.5.2 It may be possible to provide the second exit through the building and out from there.

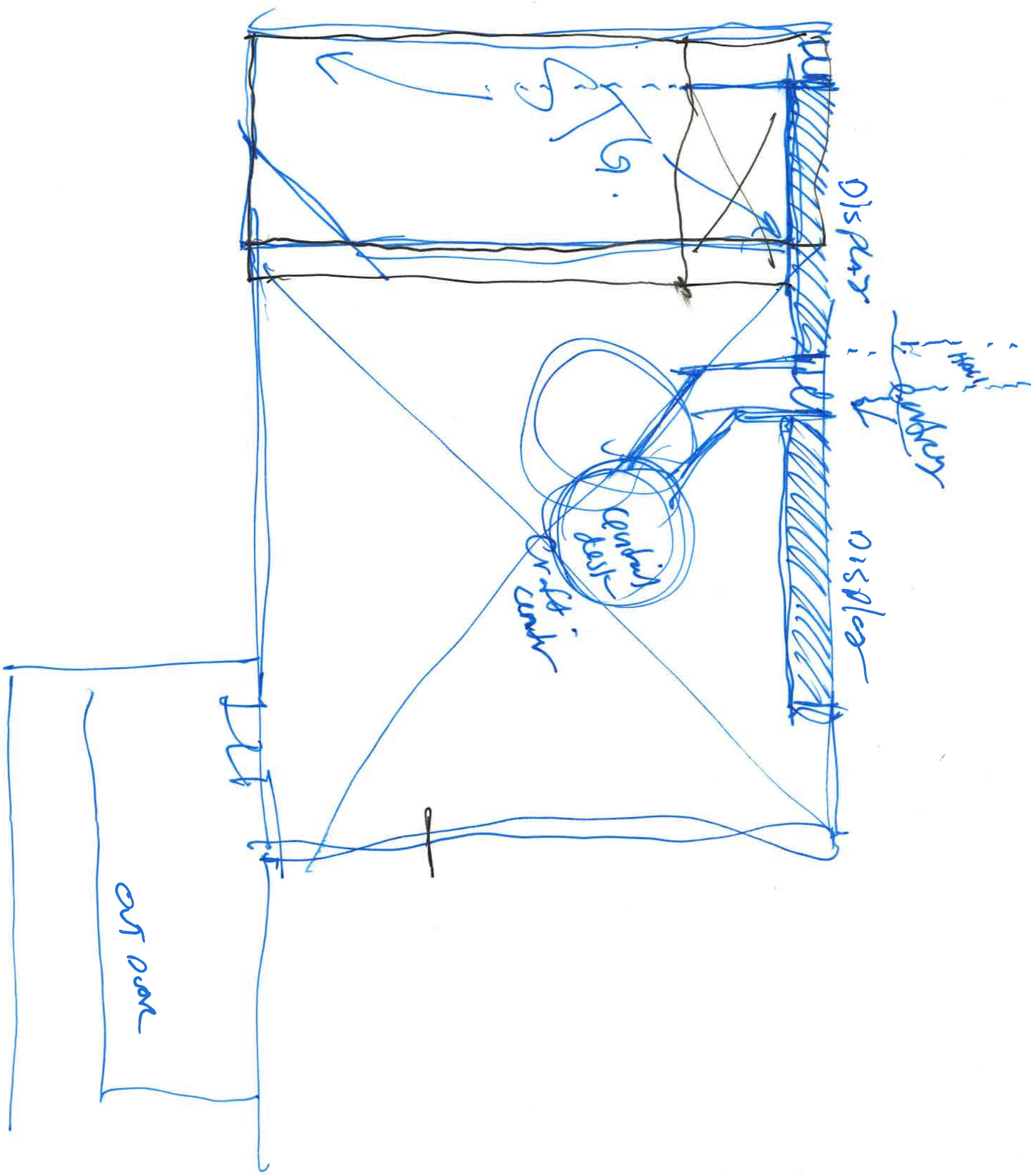
## 2.0 ACTION ITEMS

- 2.1 The Craft Center will expand their Equipment List to include columns for MEP requirements.
- 2.2 Tammy (AC Martin) will revise the floor plans per the record sketch and send to Martina Bill, CPRE.
- 2.3 Martina will make the revised plans available to the Craft Center staff.
- 2.4 The Craft Center staff will use the revised plan to provide recommended placements of equipment specific to studios and outdoor areas.

## 3.0 ATTACHMENTS

- 3.1 Record sketch of requested plan changes.
- 3.2 Craft Center Equipment Footprints
- 3.3 Craft Center Plan Diagram
- 3.4 Craft Center Equipment List & Specs

**End Time:** 11:30am  
**Recorded by:** Tammy Jow  
**Date of Report:** March 5, 2012



door

Circular  
practic

display

display

display in display

9

# Craft Center Equipment Footprints

Qty. Equipment	Actual Size	Footprint (with workspace)		
		Width	X	Depth
<b>Glass</b>				
		11.5'	X	8.5'
		10.0'	X	7.0'
		8.0'	X	5.0'
		8.0'	X	4.0'
		10.5'	X	10.5'
		2.0'	X	5.0'
		5.5'	X	2.5'
2		8.5'	X	6.0'
2		9.5'	X	6.0'
2		12.0'	X	4.0'
2		7.0'	X	4.0'
		7.0'	X	3.5'
		9.0'	X	5.0'
		6.0'	X	6.0'
		7.5'	X	7.0'
		7.0'	X	5.0'
		6.0'	X	4.0'
		3.5'	X	2.5'
		3.0'	X	2.0'
		5.0'	X	3.5'
		5.0'	X	3.0'
		4.0'	X	4.0'
		4.0'	X	3.0'
		3.0'	X	2.0'
<b>Jewelry</b>				
3		2.5'	X	3.5'
		3.0'	X	3.5'
3		2.0'	X	3.5'
		2.0'	X	2.0'
		6.0'	X	4.0'
		3.0'	X	4.0'
		8.0'	X	3.5'
		6.0'	X	5.0'
		5.0'	X	9.0'
		2.0'	X	3.0'
2		2.0'	X	3.0'
		1.5'	X	2.5'

---

**Ceramics - (Indoor)**

---

L & L Electric Kiln		9.0'	X	8.5'
Cress Electric Kiln		8.5'	X	8.0'
Pugger		7.0'	X	5.0'
14 Potter's Wheels		3.0'	X	4.0'
Accessible Wheel		3.5'	X	5.0'
Slab Roller		7.0'	X	4.0'
Wedging Table	36"x30"	4.0'	X	4.0'
Rinse Tank		4.0'	X	5.0'

---

**Ceramics - (Currently Outdoor)**

---

Geil Gas Kiln		10.0'	X	13.0'
Raku Gas Kiln		13.0'	X	13.0'
Kick Wheel		3.0'	X	4.0'
Kick/Electric Wheel		3.5'	X	4.0'

---

**Digital Lab/Production Studio**

---

Laser Engraver w/Computer		5.0'	X	4.0'
Vinyl Cutter		4.0'	X	3.0'
T-Shirt Press		2.0'	X	4.0'
2 Open Use Computers		2.0'	X	4.0'
Product Photo Studio		4.0'	X	4.0'
Kitchenette		4.0'	X	4.0'

---

**Fibers**

---

Mat Cutting		3.5'	X	4.0'
8 Sewing Machines		3.0'	X	4.0'
Floor Loom		6.0'	X	5.0'
6 Table Looms		3.0'	X	4.0'

---

**Graphics**

---

Drying Rack		4.0'		4.0'
UV Exposure Unit		3.5'		3.0'

**Woodshop**

Jointer	28"x48"	8.0'	4.5'
Wide Belt Sander	48"x48"	4.0'	24.0'
Planer	55"x37"	5.0'	23.0'
Lg. Bandsaw	53"x28"	4.5'	8.0'
Lathe	65"x36"	6.5'	6.5'
Scroll Saw	33"x16"	5.0'	2.0'
Tormek Sharpener	20"x20"	2.0'	4.0'
6" Belt/12"Disc Sander	36"x25"	3.0'	5.0'
Spindle Sander	25"x27"	2.5'	5.0'
Router Table	42"x28"	4.0'	5.0'
2 Downdraft Sanding Table	36"x48"	6.0'	4.0'
2 Table Saws	72"x104"	19.0'	12.0'
Horizontal Boring Machine	35"x25"	5.0'	5.0'
Sm. Bandsaw	26"x29"	3.0'	5.5'
Mortise Machine	34"x24"	5.0'	4.5'
2 Drill Press	31"x34"	5.0'	5.0'
Panel Saw	106"x48"	13.0'	7.0'
2 Chop Saw w/table	210"x28"	17.5'	5.0'
Dust Collection (Indoor Section)	42"x20"	3.5'	2.0'
Dust Collection (Outdoor Section)		3.0'	3.0'

**Welding/Blacksmithing**

6 Welders	18"x32"	3.0'	4.0'
2 Plasma Cutters	18"x32"	3.0'	4.0'
Bench Grinder	15"x12"	3.0'	3.0'
Break	60"x24"	5.0'	6.0'
Jump Shear	60"x36"	5.0'	9.0'
Drill Press	36"x36"	5.0'	5.0'
2 Gas Forge	16"x16"	4.0'	4.0'
Anvils	12"x24"	4.0'	4.0'

**Sandblaster**

	7.0'	5.5'
--	------	------

**Plaster Room**

100sq/ft	10.0'	10.0'
----------	-------	-------

**Painting Studio**

625sq/ft	25.0'	25.0'
----------	-------	-------

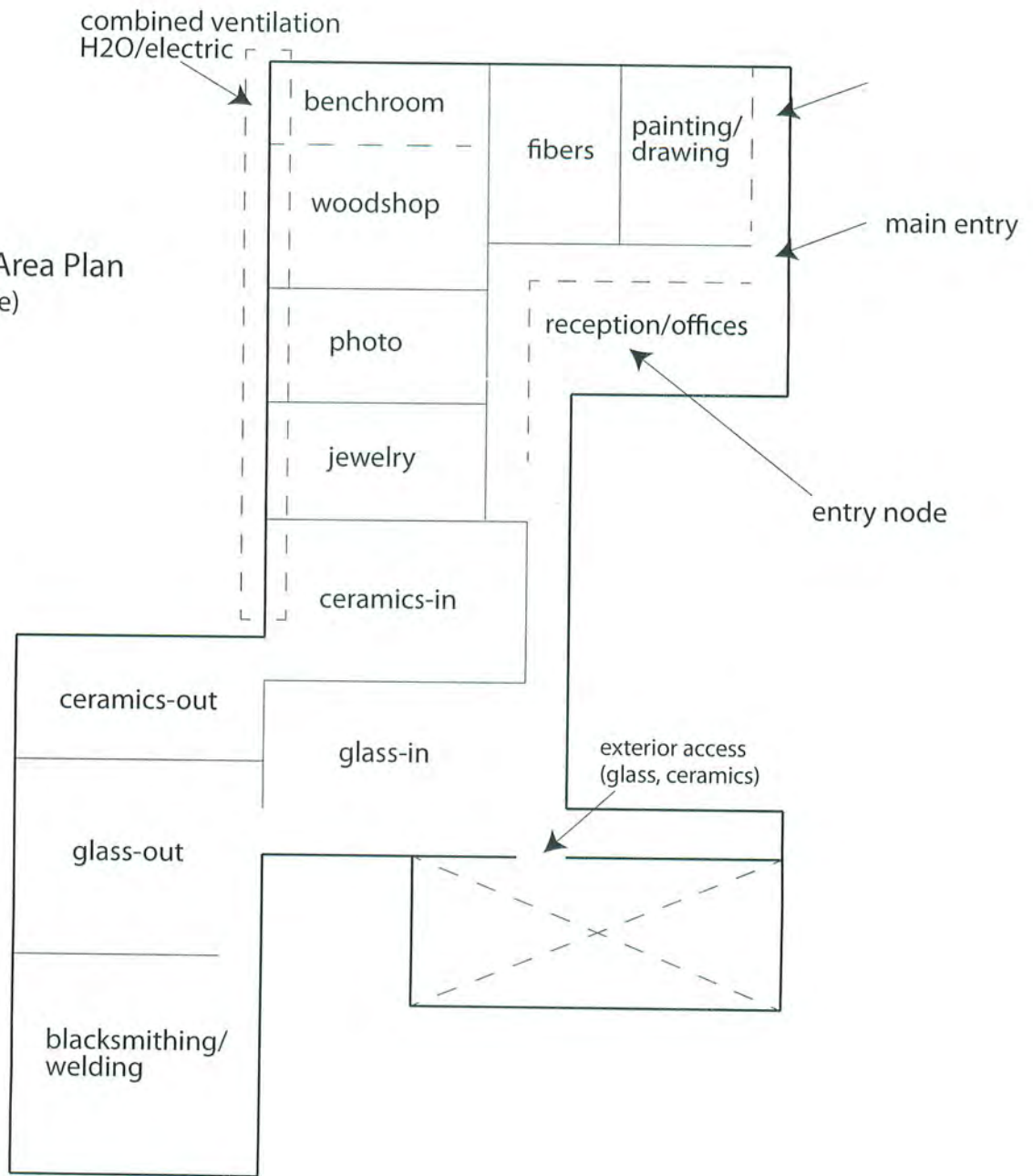
**Woodshop Benchroom**

750sq/ft	25.0'	30.0'
----------	-------	-------

**Darkrooms**

430sq/ft	18.0'	24.0'
----------	-------	-------

Concept Area Plan  
(not to scale)



List Equipment and

1. What kind of power
2. Amount of space needed
3. Clearance recommendations
4. Ventilation requirements
5. Photograph equipment & attach photo
6. Photograph equipment nameplate & attach photo

List outdoor space size, equipment footprint, and whether it is covered or uncovered (I think this means both whether the equipment is covered and how much of the space is covered).

### **EMU Craft Center Ceramics Studio**

#### **Footprints of Large Equipment and Safety Clearance/ Necessary Workspace Surrounding it:**

*Clearance specs provided are from equipment manufacturers. Local fire and safety codes supercede these guidelines.*

#### **Indoor Equipment:**

##### **Electric Kilns:**

##### **L & L electric kiln:**

Type of power: Electric  
VOLTAGE: 240  
AMPS: 48.0  
PHASE: 1  
WATTS: 11520

##### **Space needed for kiln plus clearance/workspace: 106" X 102" (106" is parallel to wall)**

Clearance recommendations: 18 inches from walls or other vertical surfaces.

Nonflammable floor . 36 inches between kilns.

"Make certain floor is not flammable, and install no closer than 18 inches from any wall. In general, it is not a good idea to install in a room in a small confined space (such as a closet). Maintain a minimum of 36 inches between two adjacent kilns especially if they are going to be used at the same time. (Remember that the kilns will heat each other). The essential issue with kiln clearance is to keep excessive heat from flammable surfaces. Remember, even when you follow clearance and ventilation recommendations, the kiln is giving off heat. Try not to locate kiln near things that can be affected by elevated temperatures, An example of this would be an electrical fuse panel which you do not want to overheat."

"Do not place any kiln under any overhead obstruction, such as cabinets, shelf, drapes, hanging plastic, etc."

(Note: 36" of electric kilns' dimensions parallel to wall can overlap, because it is a workspace between the two kilns. If kilns are adjacent to each other, total space needed for both kilns, in the dimension parallel to the wall is 173")



Ventilation Requirements:

Must be vented to the outside. (we currently have a Bailey electric kiln vent attached to the bottom of both electric kilns, and vented to the outside.) Kilns generate harmful fumes such as: carbon monoxide, sulfur oxides, hydrogen fluoride, and metal vapors. Install in well-ventilated area, and never operate in an enclosed space, such as a closet. Be careful not to locate the outlet to a vent near an open window.

Other installation requirements:

Kiln must be kept dry.

Use copper wire for hook-up. DO NOT use aluminum wire.

Do not use extension cord.

Sprinkler cautions:

"If you have a sprinkler system, be sure to check the rating and location of the heads so you do not inadvertently cause them to actuate under normal firing conditions."



**L&L Kilns**  
hotkilns.com

L&L Kiln Mfg, Inc.  
505 Sharptown Rd.  
Swedesboro, NJ 08085  
856-294-0077  
Fax: 856-294-0070  
service@hotkilns.com

**EASY-FIRE KILN**

MODEL NUMBER: e28T-3-240  
SERIAL NUMBER: 050208-N-BIG  
VOLTAGE: 240      PHASE: 1  
AMPS: 48.0      WATTS: 11520  
MAX TEMPERATURE (DEG F): 2280



**Cress electric kiln:**

Type of power: Electric

VOLTAGE: 208C

AMPS: 54

Space needed for kiln plus clearance/workspace: 103" X 92"  
(103" is parallel to wall)

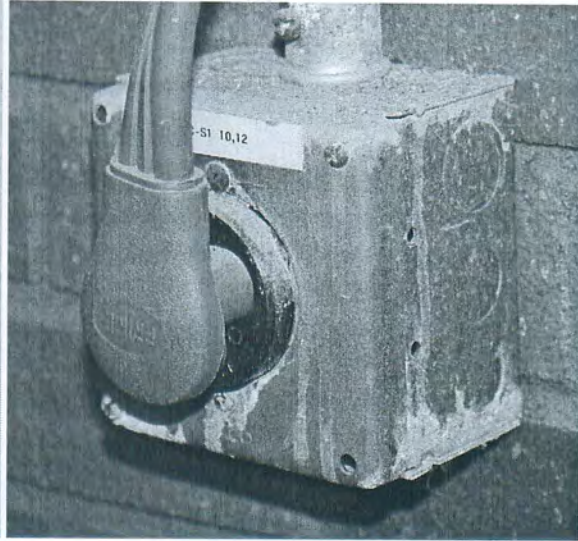
Clearance recommendations: Same as L&L Kiln (See above).

Ventilation Requirements: Same as L&L Kiln (See above).

**CSA**®  
**CRESS ELECTRIC KILN**  
NRTL/C

MODEL	ET27	SER.	9905D
VOLTS	208AC	AMPS.	54

**CRESS MFG. CO.**  
CARSON CITY, NEVADA



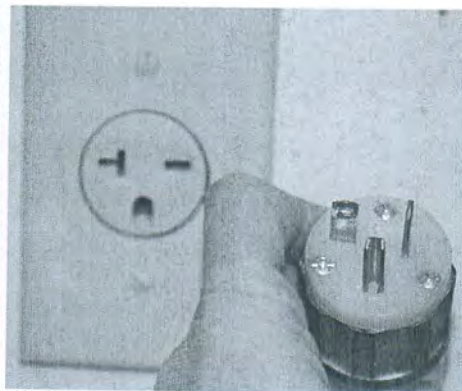
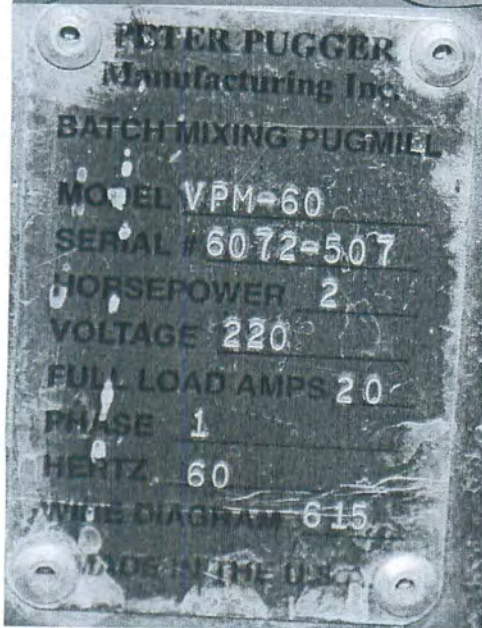
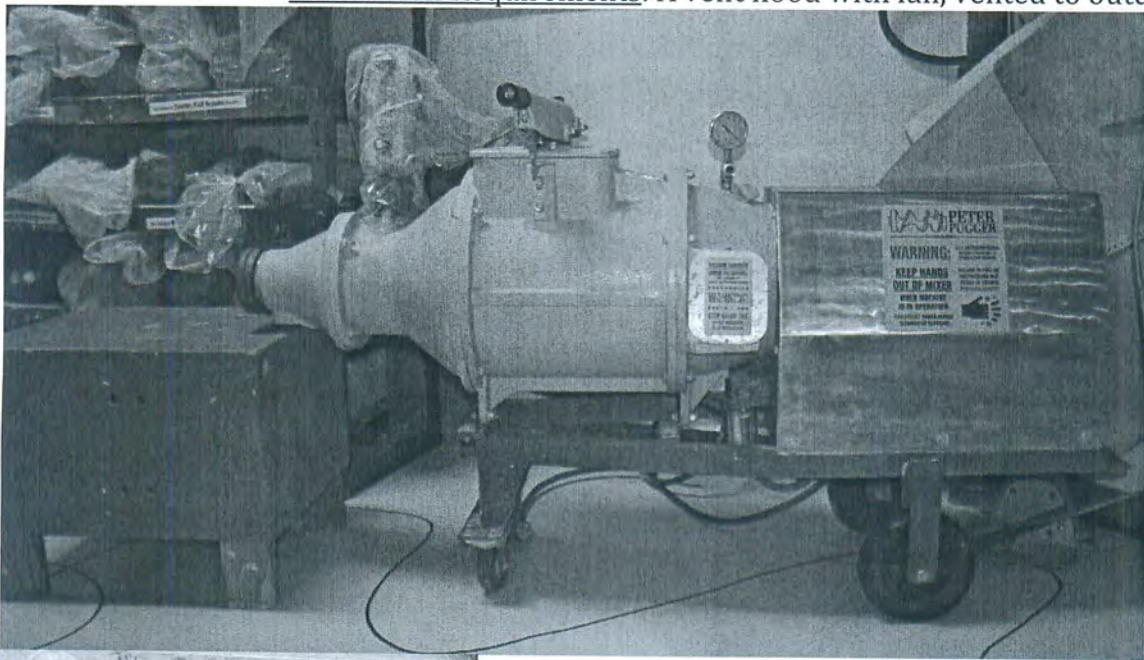
Other indoor equipment:

**Peter Pugger clay mixer/pugger:**

Type of power: Electric  
VOLTAGE: 220  
FULL LOAD AMPS: 20  
PHASE: 1  
HORSEPOWER: 2  
HERTZ: 60

Clearance recommendations: Space needed for Peter Pugger plus clearance/workspace: 84" X 60"  
(84" is parallel to wall)

Ventilation Requirements: A vent hood with fan, vented to outdoors is ideal



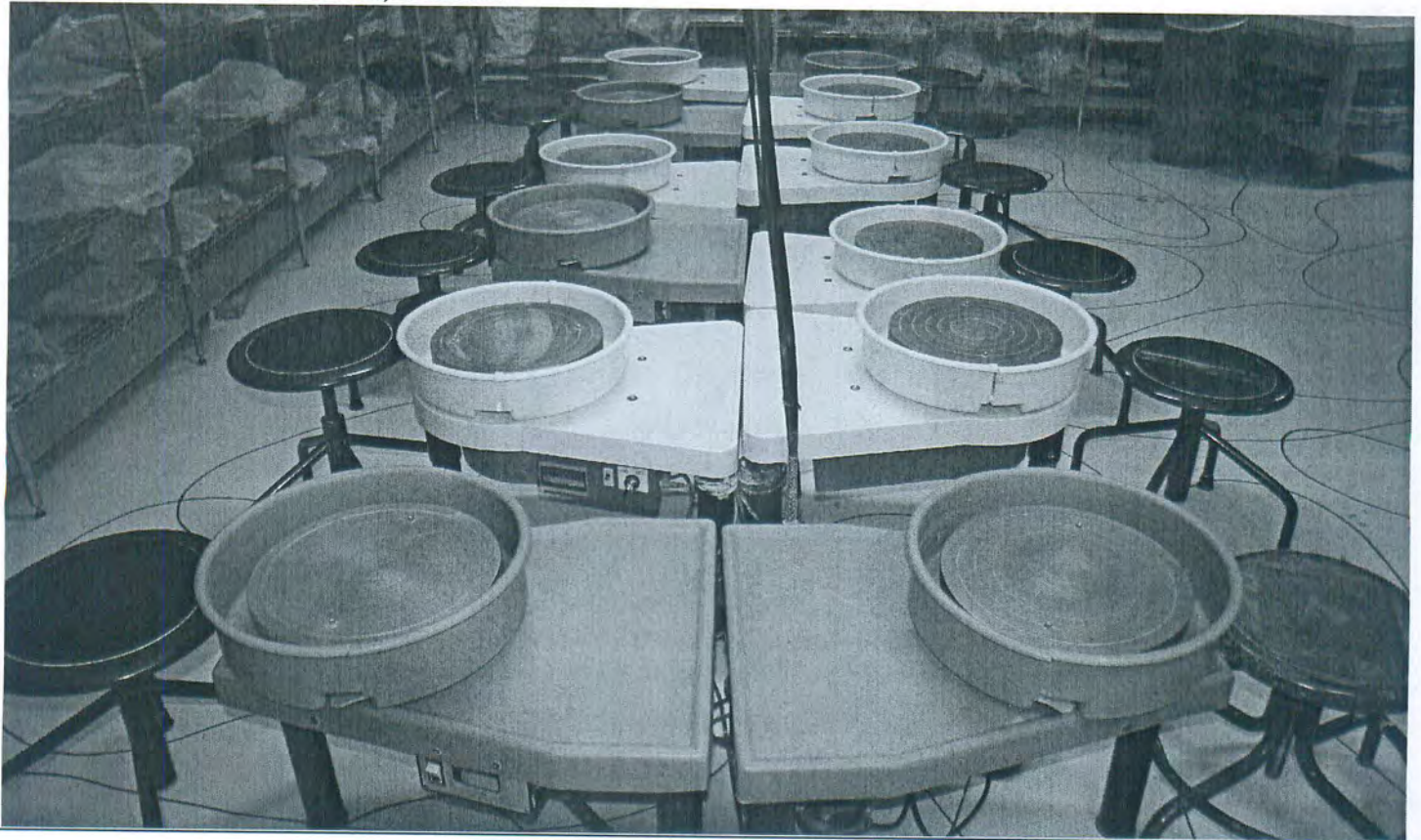
**Potter's Wheels:**

We have a double row of 14 electric potter's wheels of similar sizes, but different brands and models (Brent C, Brent CXC, and Shimpo VL Whisper).

Together, the area they take up, including stool space and walk space around them is:

Length: 26 feet, 6 inches

Width: 13 feet, 4 inches



Shimpo VL Whisper potter's wheel (we have 7 of these)

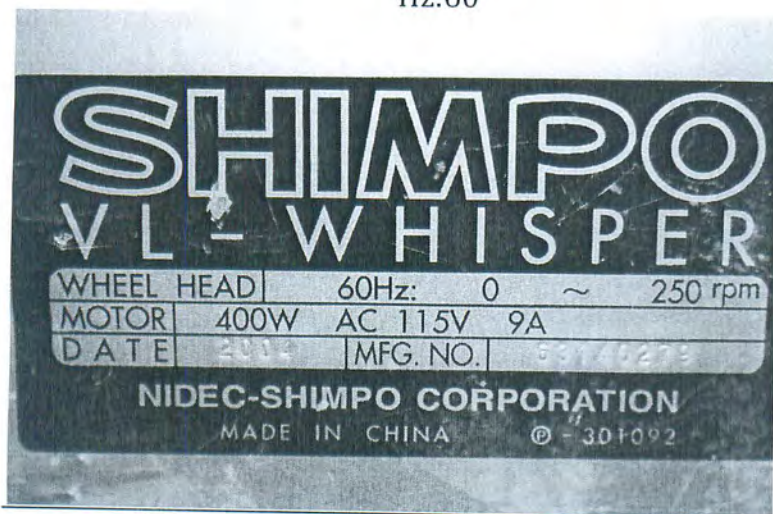
Type of power: Electric

VOLTAGE: 115V

AMPS: 9A

WATTS: 400W

Hz:60



Brent CXC potter's wheel (we have 3 of these)

Type of power: Electric

VOLTAGE: 110V

AMPS: 10A

HP: 1



Brent C potter's wheel (we have 4 of these)

Type of power: Electric

VOLTAGE: 110V

AMPS: 5A

HP: 1/2

Bluebird Soldner P200 potter's wheel (we have 1 of these. It is our wheelchair accessible wheel)

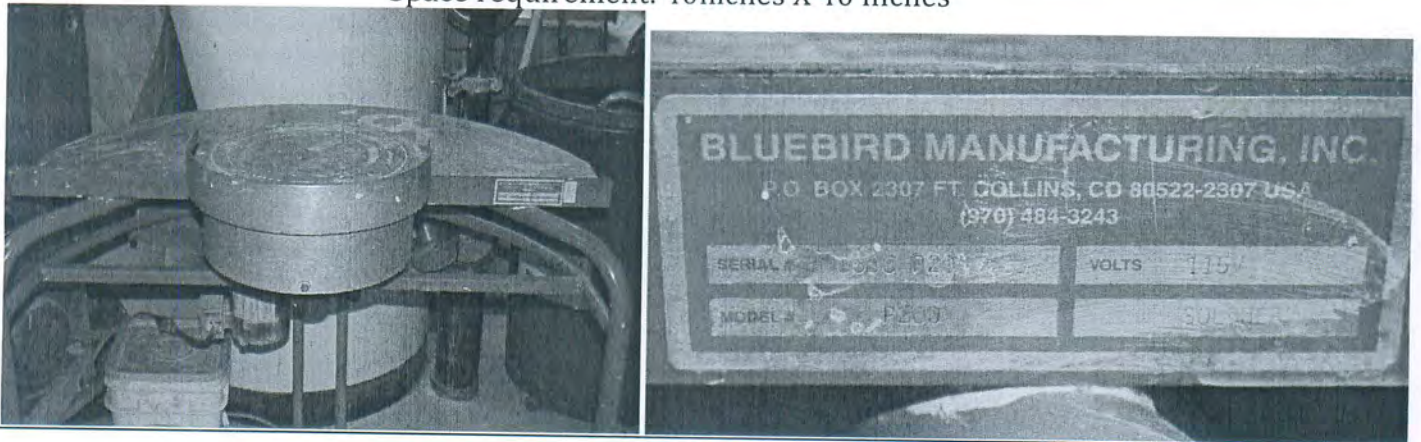
Type of power: Electric

VOLTAGE: 115V

AMPS: 4.8A

HP: 1/2

Space requirement: 40inches X 40 inches



Outdoor Equipment: (All must be covered.)

Natural Gas Kilns:



**Geil Natural Gas Kiln:**

Type of power: Natural Gas with electric controller

Electric controller: VOLTS: 120 Amps: 10 Hz: 60

Natural Gas: BTU/HR input: 200,000

Manifold Pressure- IN. W.C. 3.5

Amount of Space needed: 156" X 120" (120" is parallel to wall, 36" of which can overlap with space for Olympic Raku Kiln)

Ventilation Requirements: Out of doors and well covered is ideal. "Provisions shall be made to ensure an adequate supply of fresh air for proper combustion and ventilation."

Clearance Requirements: "There must be no obstruction of the kiln, whatsoever. For servicing and proper operation, at least 36" of clearance must be provided to all sides of the kiln."

If installed in an enclosed area, venting is mandatory. Venting schematic diagrams are available in kiln manual.



# GEIL KILNS

Manufactured by Geil Industries  
In The United States of America

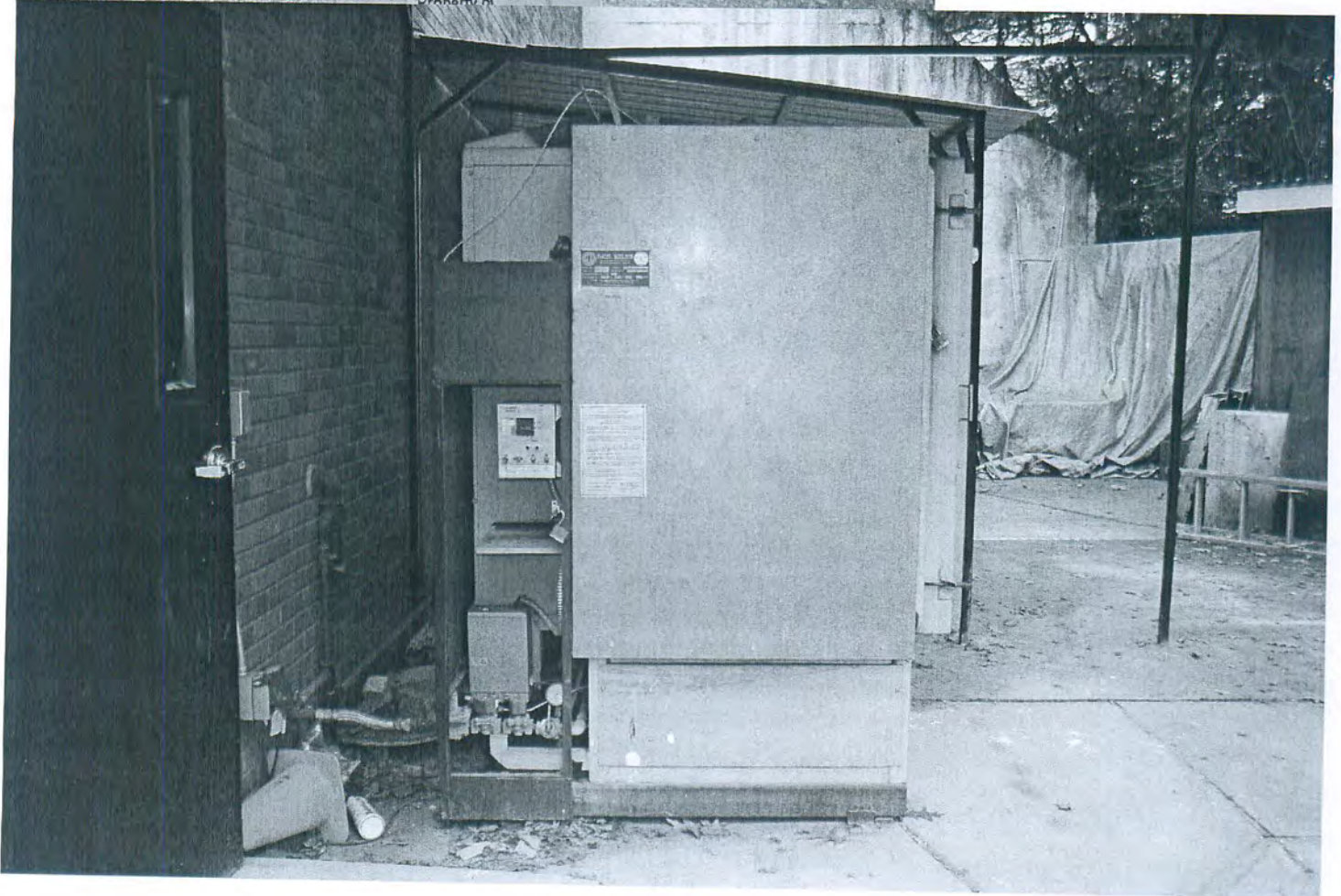


MODEL NO. **DLB 12** SERIAL NO. **120101609**  
TYPE GAS **NAT.** BTU/HR-INPUT **200000**  
MANIFOLD PRESSURE - IN. W.C. **3.5**  
ELECTRICAL RATING **120** VAC **1** PH **60** Hz **10** AMPS.

CLEARANCES TO COMBUSTIBLE & NONCOMBUSTIBLE CONSTRUCTION:  
36 IN. MINIMUM, TO BACK, L SIDE, R SIDE.

"FOR INSTALLATION UNDER VENTILATION HOOD ONLY"  
"FOR USE ONLY ON NONCOMBUSTIBLE FLOORS"

AGA REQUIREMENT 1-84





**Olympic Natural Gas Raku Kiln:** (must be out of doors and covered)

Type of power: Natural Gas

Natural Gas: BTU/HR input: 280,000

Manifold Pressure- IN. W.C. 3.5

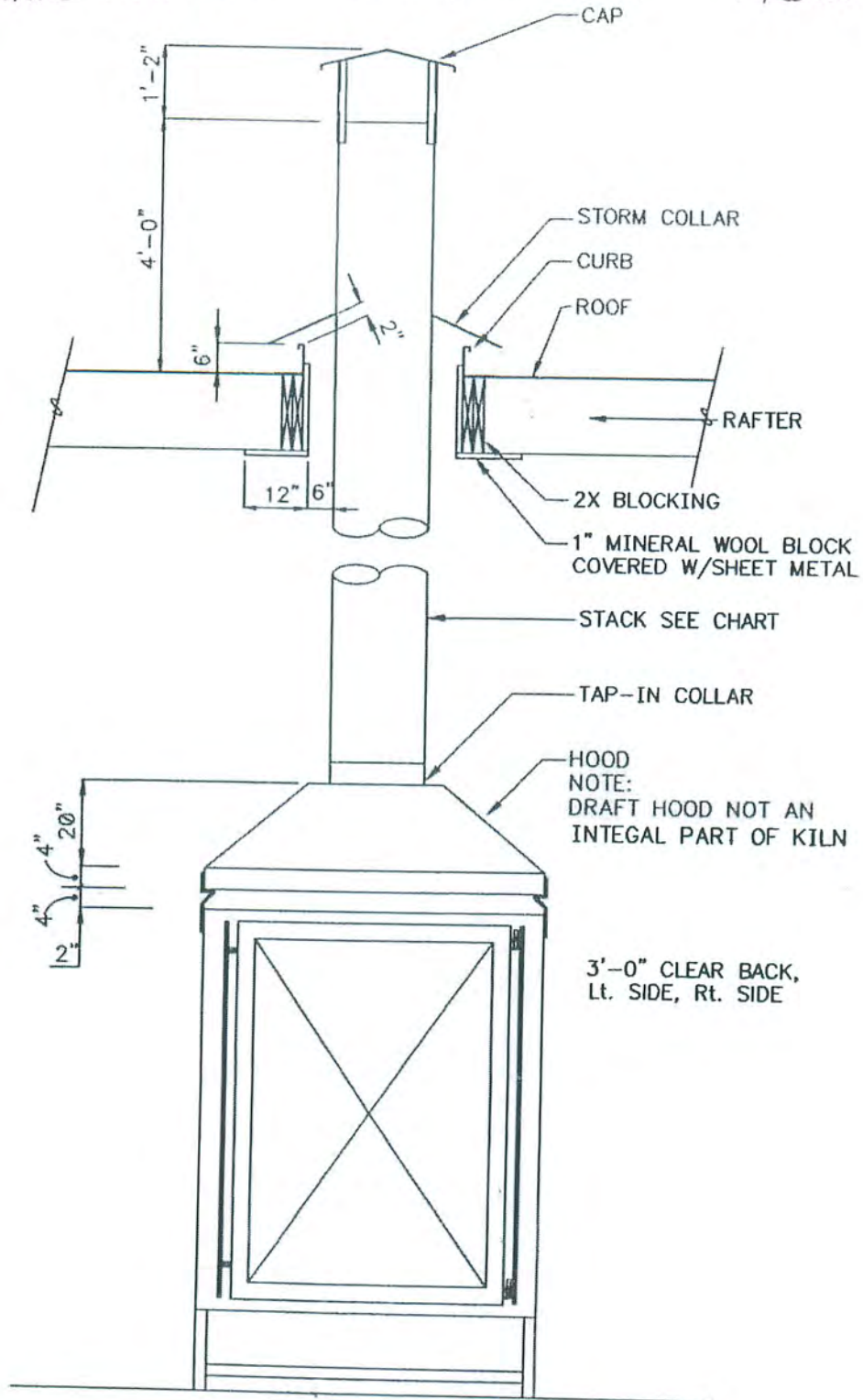
Amount of Space needed: 156" X 156" (parallel to wall, 36" of which can overlap with space for Geil Gas Kiln)

Ventilation Requirements: Out of doors and well covered is ideal. "Provisions shall be made to ensure an adequate supply of fresh air for proper combustion and ventilation."

Clearance Requirements: "There must be no obstruction of the kiln, whatsoever. For servicing and proper operation, at least 36" of clearance must be provided to all sides of the kiln."

For safe operation of Raku kiln, 5' of clearance is needed on 3 sides, but preferable on all four sides, as kiln is designed for 360 degree access. Ideally, the gas line will be recessed below the ground level, so as not to pose a tripping hazard.





**TYPICAL VENTING ENCLOSED AREA**

THIS DIAGRAM IS TO BE USED FOR REFERENCE ONLY. WHEN SETTING UP YOUR GEIL DOWNDRAFT KILN, CHECK YOUR LOCAL BUILDING CODES.

Geil Gas Kiln

# Geil Gas Kiln

## **KILN PLACEMENT AND SET-UP**

It is important that your kiln be located on a sound and level foundation. A 3-1/2 inch thick concrete slab in a clean, dry area is recommended. If the surface selected is not level, appropriate steps should be taken to insure that the kiln is as level as possible.

If the kiln is installed in an enclosed area, venting is mandatory (See Fig 1 or 1A). In order to vent safely and properly, check with your local building department for city requirements regarding proper venting. If a site has been chosen outdoors, care must be taken to provide protection from the elements. Rain and snow can seriously damage a kiln.

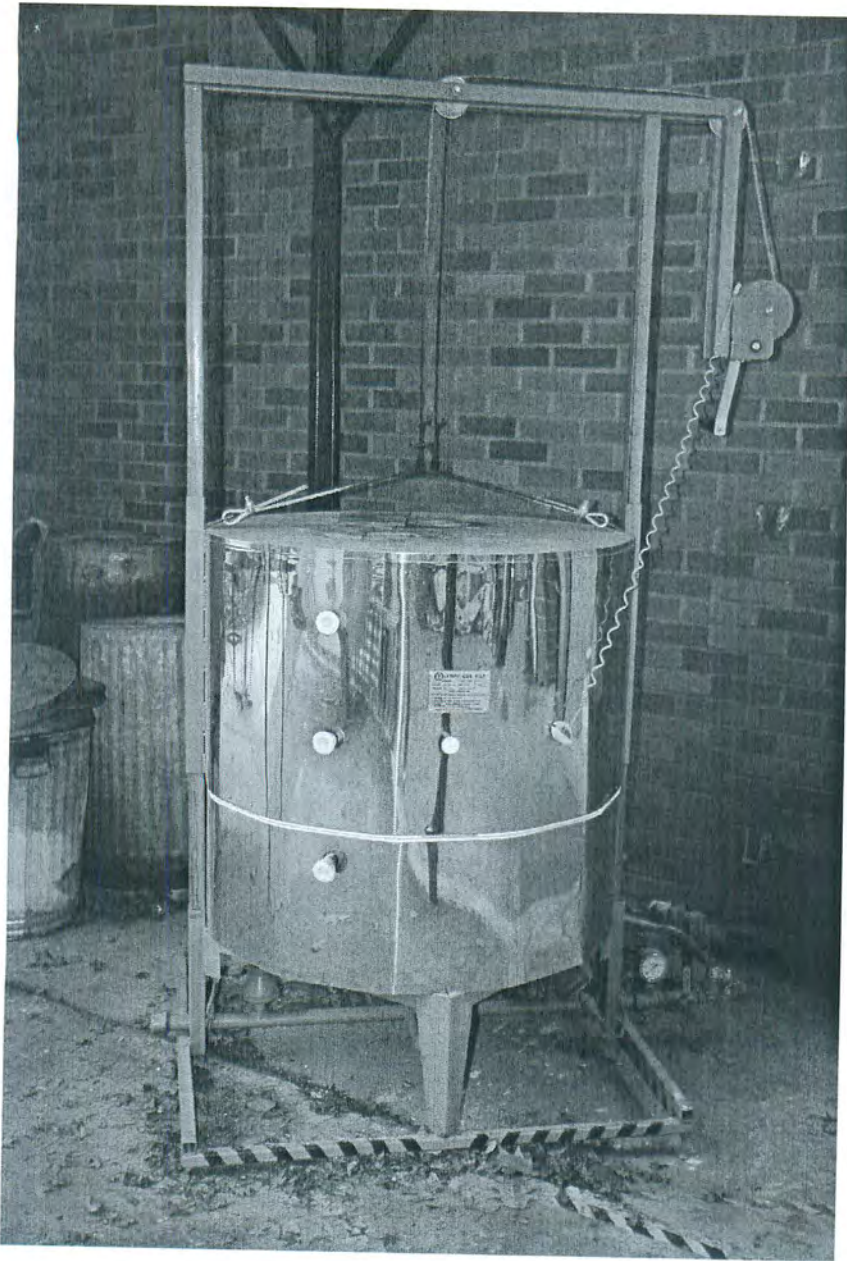
When selecting an area for the kiln, please bear in mind that a three (3 ft.) foot clearance from combustible material and 18 inch minimum clearance from non-combustible material is required. Accessibility at the rear of the kiln must be maintained for damper adjustments. 24 inch minimum from a non-combustible.


### **GAS HOOK-UP**

A sufficient supply of fuel to the kiln is of utmost importance for proper firing. Therefore the system supplying the fuel must be carefully installed. The requirements for installing gas lines vary depending on the size of the kiln, the distance from the meter (or Tank) to the kiln, and the number of bends in the line between the meter and the kiln. Your local gas company or plumbing contractor has information to determine what size of gas line you will need to accommodate your particular installation. The gas line should be completely and thoroughly flushed free of air and debris prior to the final connection. Failure to flush the line may result in firing difficulty.

### **ELECTRICAL REQUIREMENT**

120 V. 10 AMP. Power source is required for all DL MODEL KILNS. ALL DL MODELS are equipped with a 6 ft.. power cord.




**OLYMPIC GAS KILN**  
 MODEL  SN   
 BTU/HR  MAX. TEMP.  °F CONE   
 GAS TYPE  ORIFICE SIZE   
**WHEN OPERATING**  
 \* PLACE KILN ON CONCRETE FLOOR OR FIRE RETARDANT SHEET.  
 \* KILN MUST BE PROPERLY VENTED.  
 \* AVOID CONTACT WITH OUTSIDE OF KILN DURING FIRING.  
 \* PROVIDE 18" INCHES MINIMUM CLEARANCE BETWEEN KILN AND WALL OR OTHER COMBUSTIBLES.  
 HAUGEN MANUFACTURING INC. 4225 THURMOND TANNER RD.  
 FLOWERY BRANCH, GEORGIA 30542

**Ceramics furniture, not including space around it:**

Counter space with glazes on carts stored under it, including small sink:  
17'X28"

Large sink: 50"X31"

Post cart:28"X20"

Tables :

6'X3'

6'X3'

7'X3'

Slab Roller & Slab Roller table  
32"X75"

Wedging table:  
36"X30"

Clay storage ½ of 10'X10' shed

Shelving for finished work and  
Reclaim clay storage (under shelving):  
18"X10'

Shelving for clay storage for classes:  
8'4"X18"

\*all walls are lined with shelves -didn't include dimensions here

Glaze closet (ceramics ½ of it):  
6'X8'

Glaze bins: 8'X3'

Clearance/workspace in front of glaze materials bin: 8'X3'

(Needs ventilation)

4 Reclaim barrels: 24" diameters  
1 glaze rinse barrel: 24" diameter

2 banks of lockers with lonely pot storage cabinets above them:  
48X18"  
60"X18"

Other Equipment currently outdoors and covered (excluding clearance):

Bluebird Clay mixer: 28"X24"  
Lockerbie Kickwheel: 36"X40"  
Brent Kick/electric hybrid wheel: 38"X45"