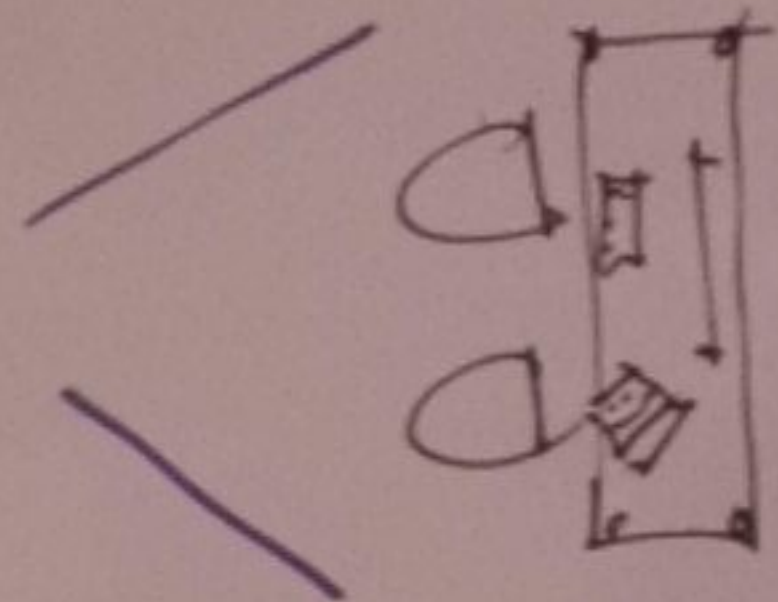


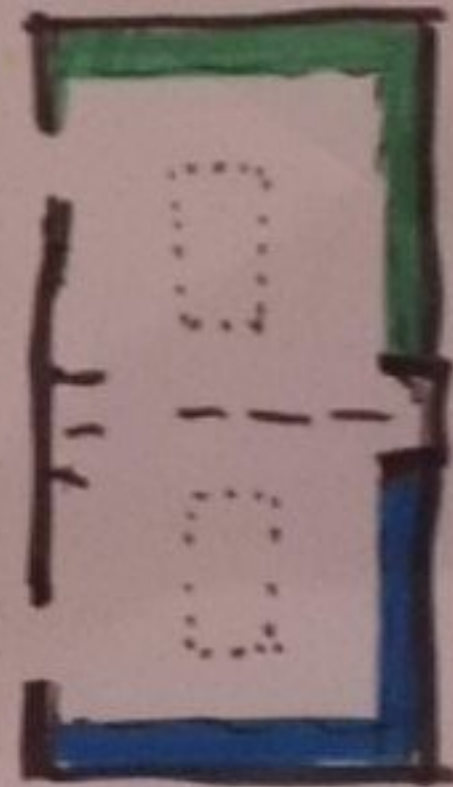
# #2 MCC + STUDENT UNIONS

①

- 1 DIRECTOR
- 1 FULL-TIME ASSISTANT
- 4 STUDENT STATIONS  
OFTEN TWO WORKING TOGETHER



- 1 WORKSPACE/LIBRARY  
POSSIBLY DIVIDABLE IN 2

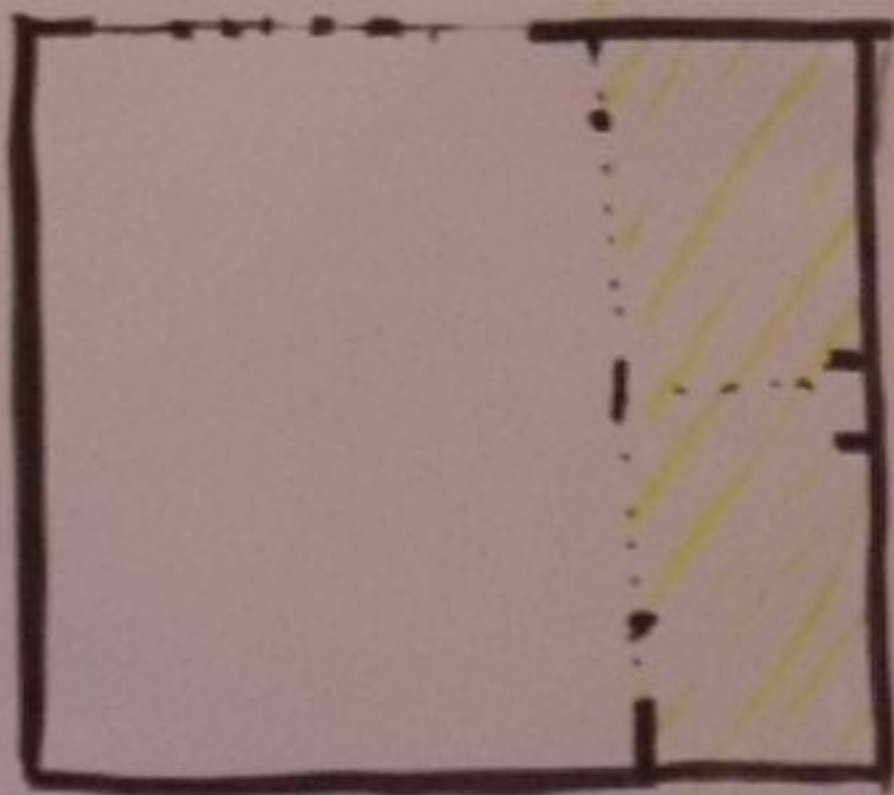


- 1 COMMON AREA  
W/ PROJECTOR, SCREEN
- 5 STUDENT COMPUTER STATIONS

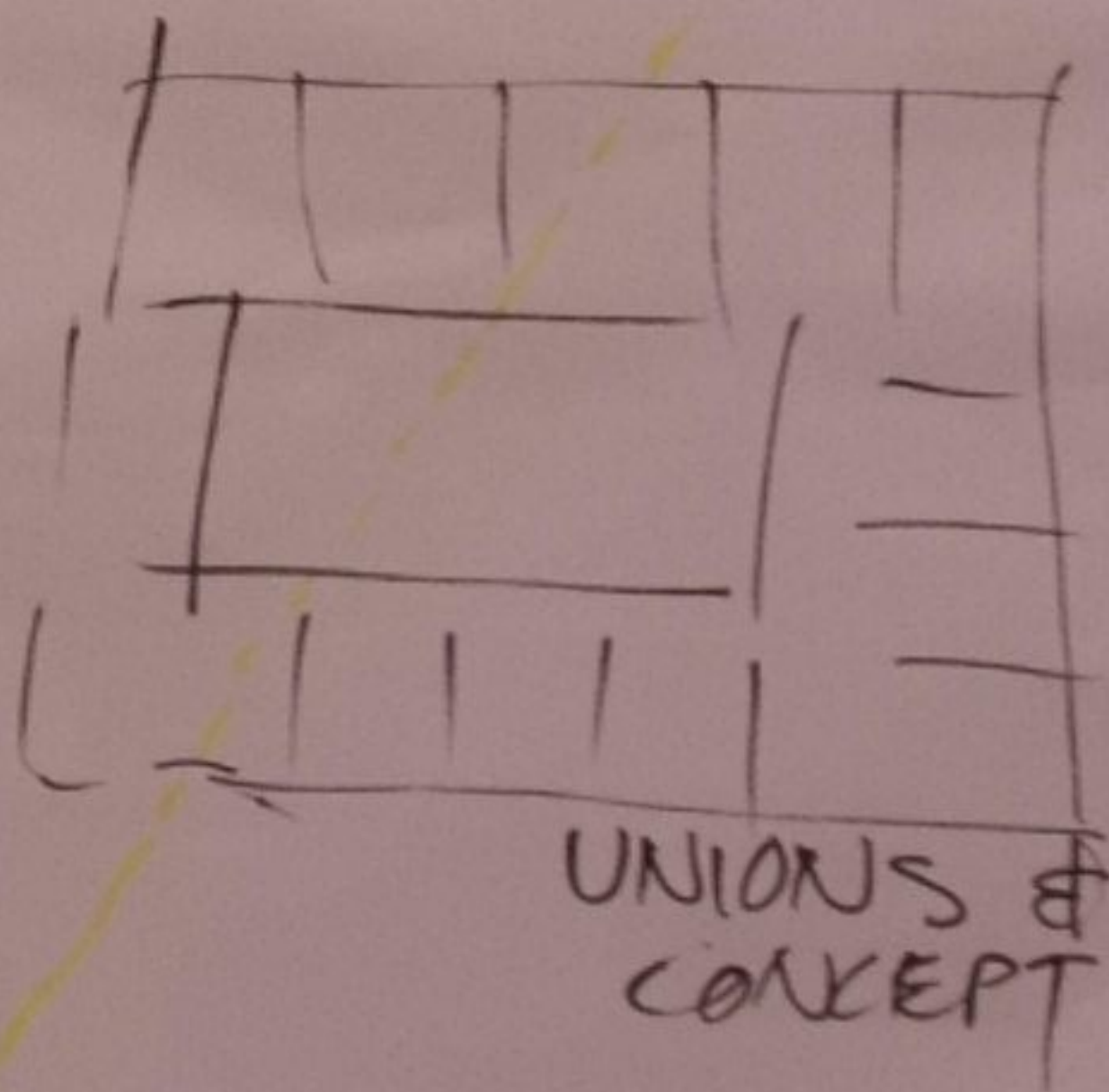
PROXIMITY TO RESOURCE CENTER?

- 1 STUDENT KITCHEN (ETTE)  
AS PART OF

- 1 STORE CHAIRS - ALONG WALL?  
STORAGE



ABILITY TO USE AS ONE SPACE



UNIONS & MCC  
CONCEPT

MARKETING?



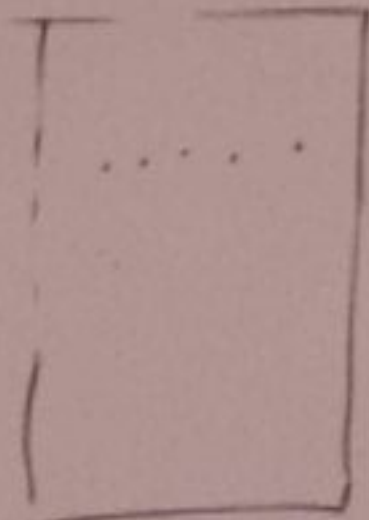
# MCC & STUDENT UNIONS

(2)

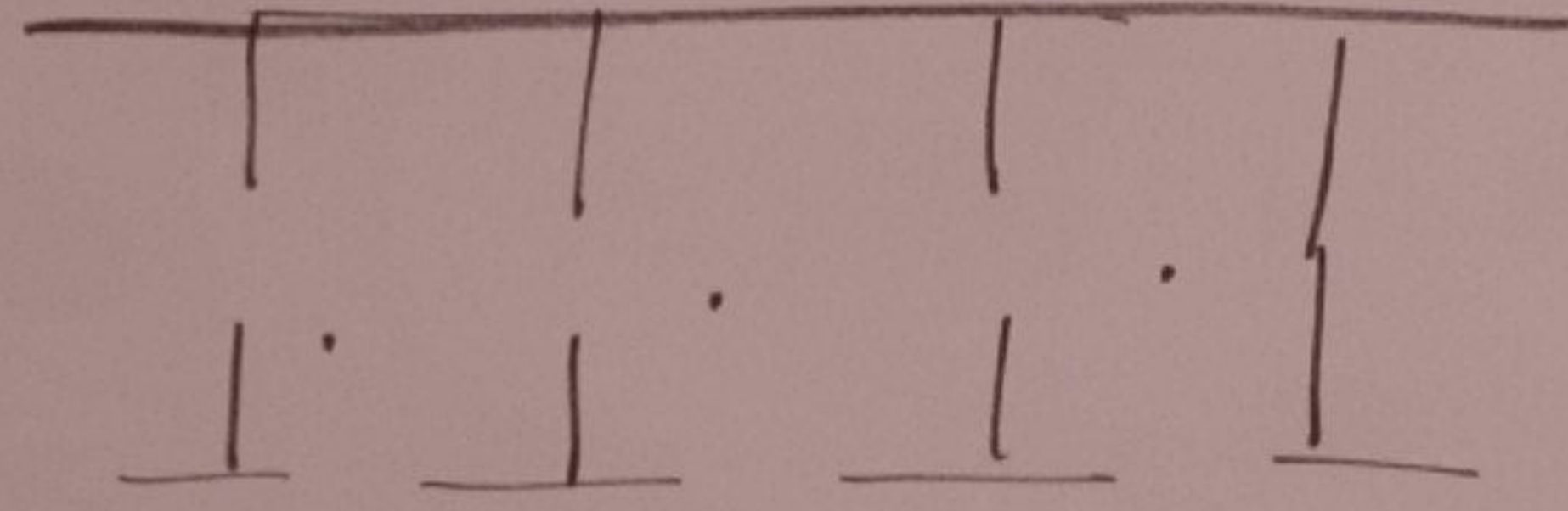
PER STUDENT UNION: (15 GROUPS)

+4 STUDENT WORK STATIONS

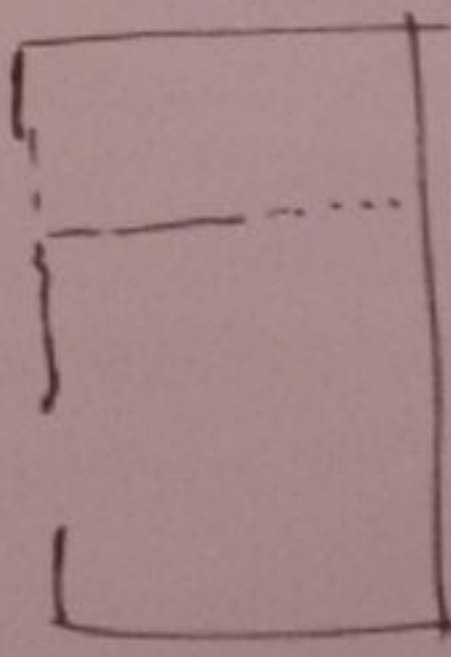
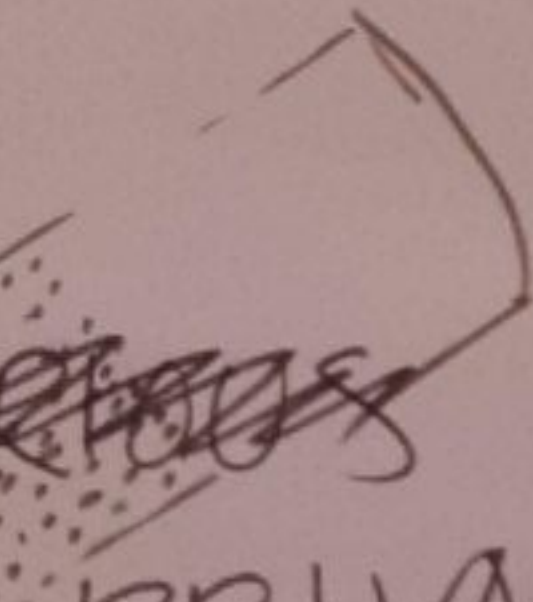
+1 OPEN SPACE



PROVIDE FLEXIBILITY FOR VARIOUS ~~VARIOUS~~ GROUP SIZES



PROVIDE PROVISIONS FOR ~~VARIOUS~~ ~~GROUP SIZES~~ CREATING PRIVACY WITHIN SOME SUITES



NEW FURNITURE?  
THAT'S THE PLAN