



# KWVA

RADIO STATION (Media Center) w/ STUDENT PAPERS OR DAILY EMERALD

STUDENT - MUSIC, NEWS, SPORTS  
24/7/365 - ACCESS! 10a-9p HEAVY USE.

REPRESENT THE UNDERREPRESENTED  
 150 VOLUNTEERS + 30 NEWS/SPORTS VOL

NEED: TRAINING SP. - DESK & STUDIO  
 LIVE PERFORMANCE BANDS RECORDING (4-6 People)  
 (3 SPACES NOW, IMPROVE SOUND ISOLATION)  
 TOTAL OPERATION  
 DEDICATED ~ SHARE W/ CONCERT HALL STUDIO  
 WINDOWS BTWN SPACES OR LIVE VIDEO FEED

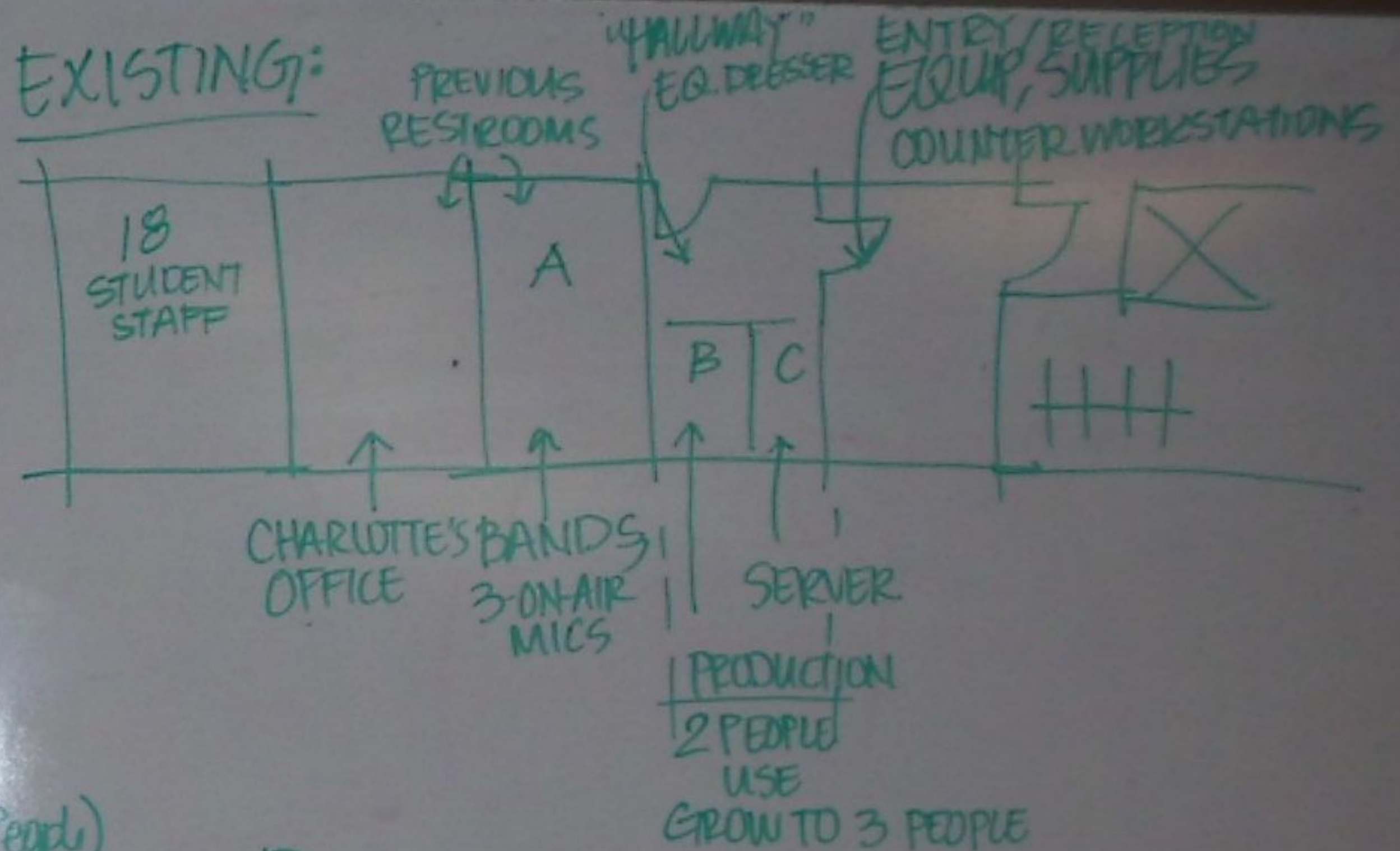
TYP. 10 PEOPLE AT ONCE USE SPACES

HIGH NETWORK NEEDS - 1 CONTROL EQUIP SP.  
 (CONTRACTOR SUPPORT)

ON-AIR & PRODUCTION

MEETING, STAFF SPS = SHARED

## EXISTING:

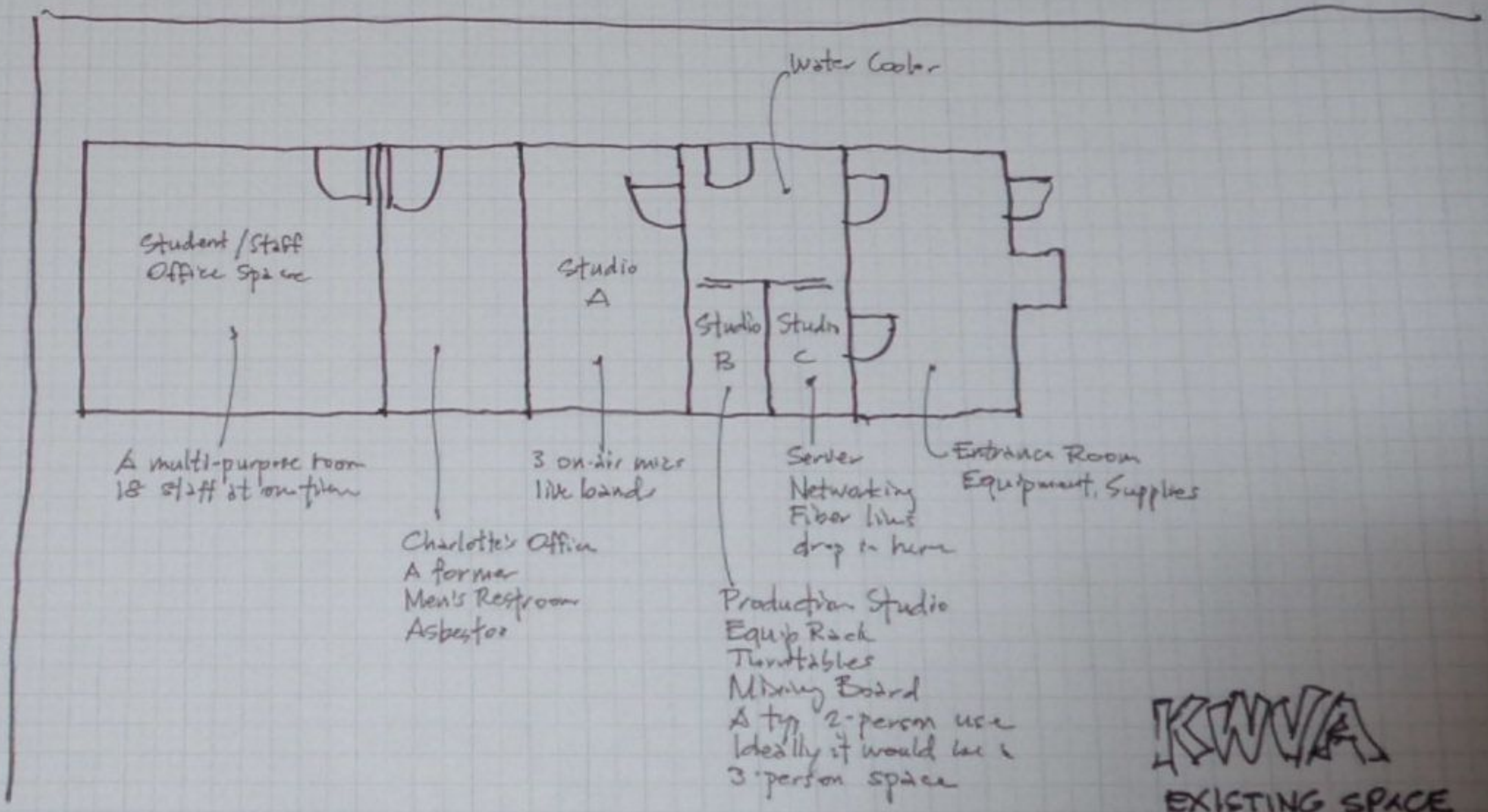
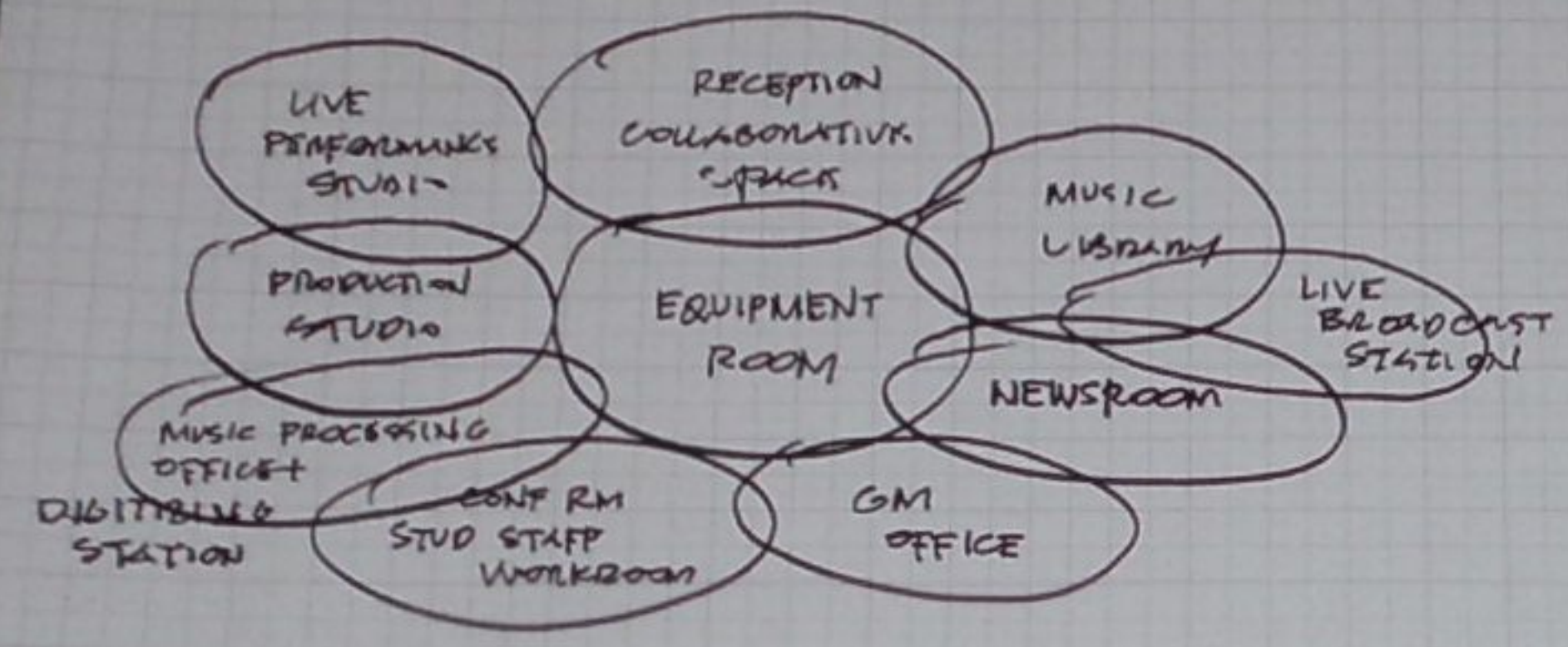


## PROPOSED DESIGN (HANDOUT)

- MISSING A NEWS ROOM
- LONG/NARROW NOT IDEAL
- EQ RM @ CORE
- DESIRE STOREFRONT, VISIBILITY TO STUDENTS
- "CONF. RM & STUDENT STAFF WORKROOM"  
 ↳ SHARED OK ↳ NECESSARY, DEDICATED PROJECTS

## ADJACENCIES:

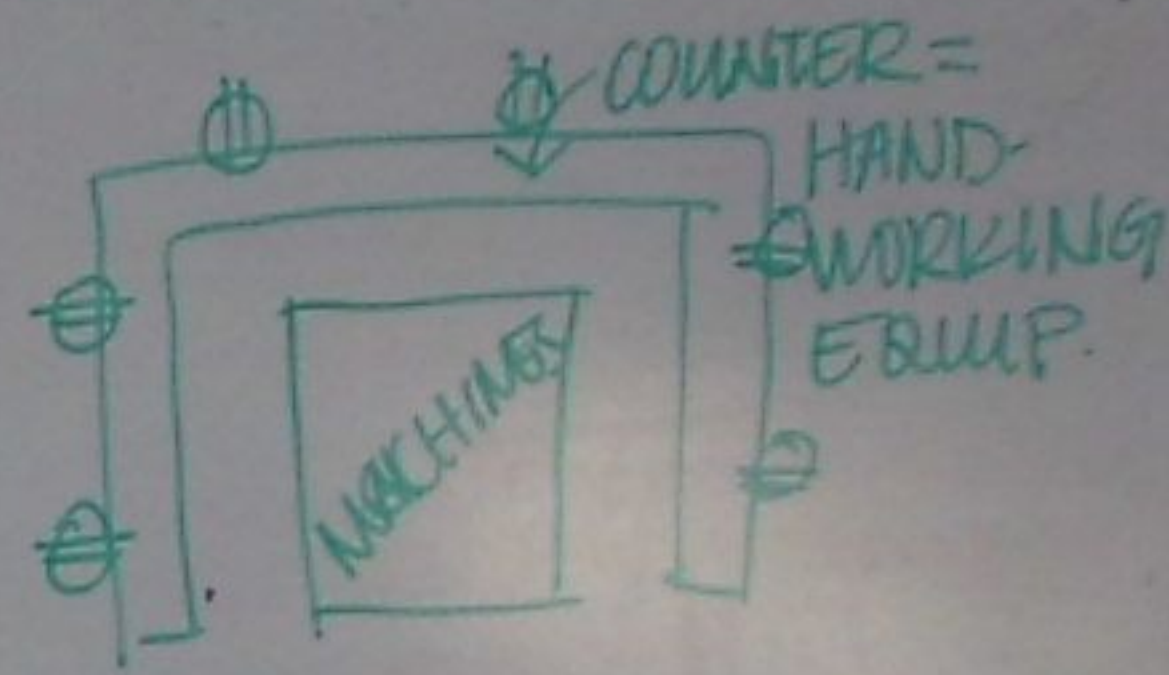
- MEDIA CENTER** - COMMENTATOR, VOICE, ODE
- VIDEO PRODUCTION (J-SCHOOL CLASS + ...)
- OPEN TO ALL STUDENTS** - EMU MARKETING
- CULTURAL FORUM
- AS SUITE OF RESOURCES** - CWB SPORTS, OUT PROG, ETC.
- \* STUDENT FOCUS \*



**KWVA**  
 EXISTING SPACE

# CAMPUS DIGITAL PRINT COPY

- MISSION: PRINTING & MAILING SERVICES DEPT. FACULTY, STUDENT & STAFF SUPPORT, PRODUCTION FOR UO
- ↳ CAMPUS COPY N "KINKO'S" OF UO/SATELLITE HARD TO FIND IN EMU NOW FROM BAKER DOWNTOWN CENTER
- 7:30a - 5:30p (↑ to 9pm), peak @ noon, 1st & last wk of term
- 2 FULLTIME, 3 ROTATING STUDENTS
- FRONT COUNTER, HI-VISIBLE, ACCESSIBLE
- 5 PRINTERS, BINDING EQ., OFFICE, "LUNCA" RM. RECYCLING BINS
- ↳ SECURE      ↳ POSSIBLE SHARE
- SELF-SERVICE COPIERS IN HALLWAY (2) 24/7
- DELIVERY BY HAND-TRUCK FROM BAKER
- ADJACENCIES - SELL PEANUT PAPER BUZZ, CONFERENCE, FOOD, LOBBY, COMPUTER LAB (PLACES TO WAIT FOR JOB)
- PERSONAL MAILING → UPS (SAME ZONE OK)



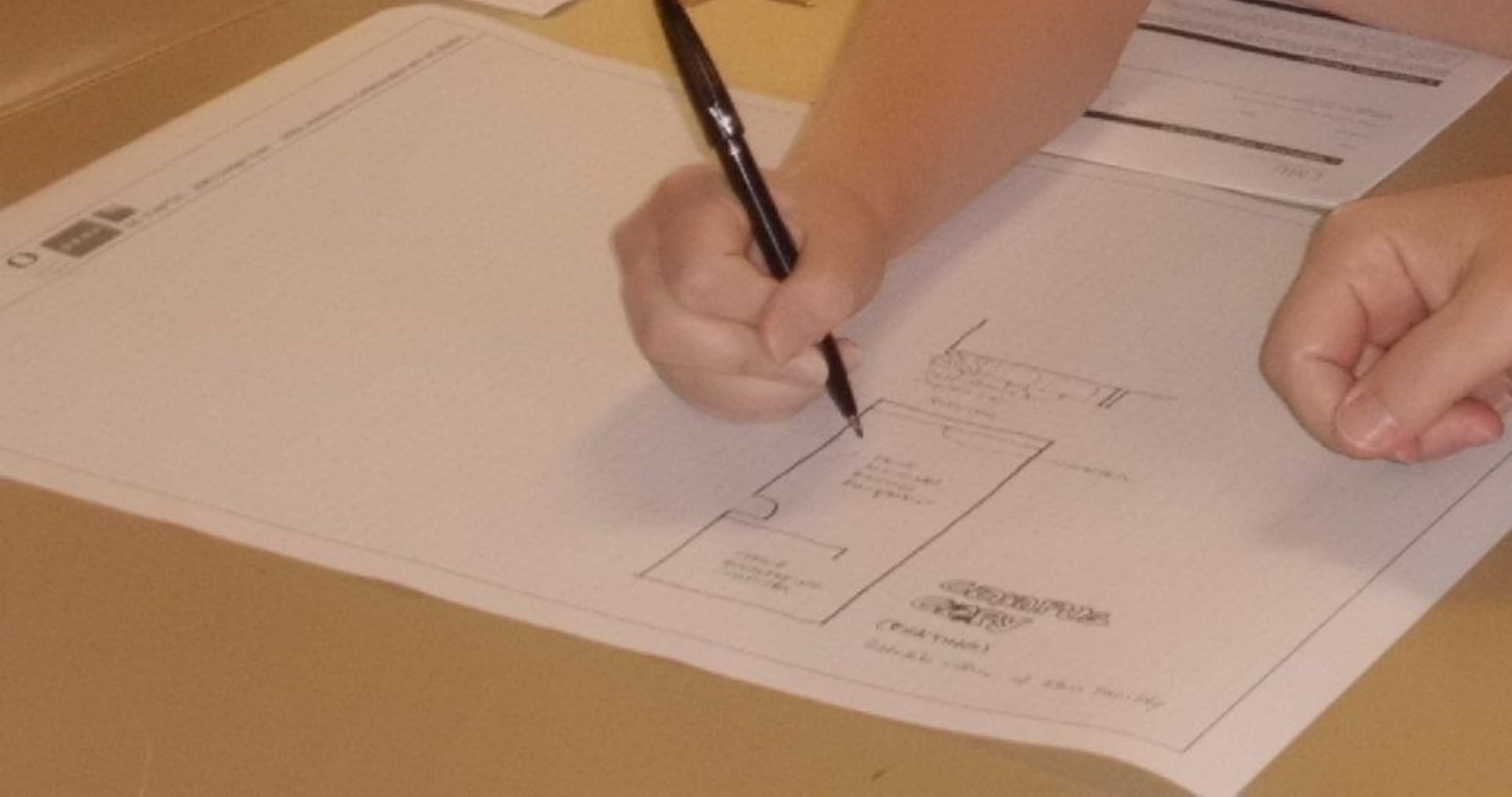
"KITCHEN" WORKSPACE MODEL

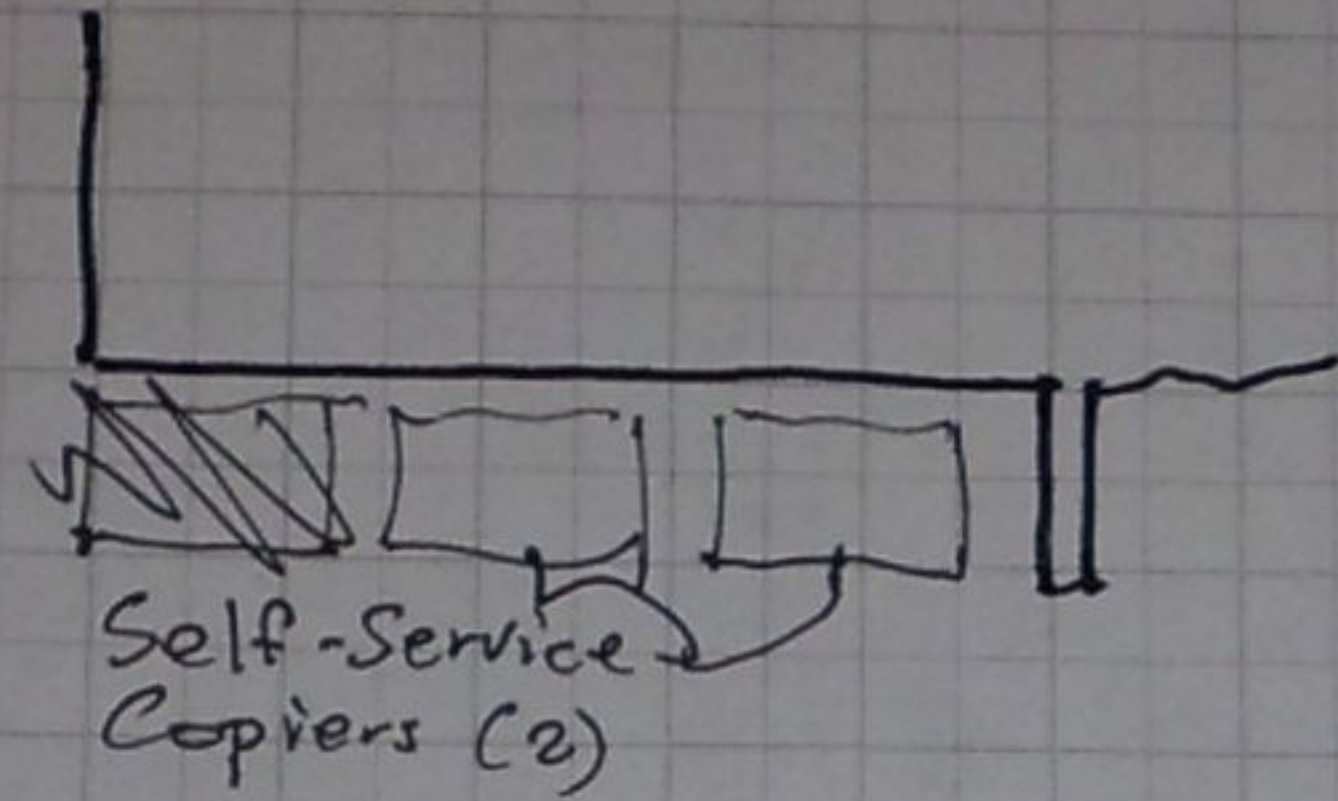
- LEASE NOW @ 932 SF.
- STORAGE NECESSARY CAN ↑ EFFICIENT
- PREVIOUSLY IN UNION MARKET BUSINESS BETTER, VISIBILITY, TRAFFIC EXTERIOR & INTERIOR
- SECURITY - CLOSED SAT/SUN.
- NETWORK - HUGE FILES HANDLED
- NO CARPET
- REDUNDANCY - FLEXIBILITY - HI/LOW / REPETITIVE WORK. - HANDWORK COUNTERS



HELLO  
my name is  
Jennifer

HELLO  
my name is





QUEUING



open shelves above

CAMPUS COPY

(EXISTING)

Satellite office of Main Facility



# OUTDOOR PROGRAM

- 1 OF 1<sup>ST</sup> IN COUNTRY FOR COLLEGES/UNIVS
- COMMON ADVENTURE NS. GUIDING
- 5 BRANCHES
  - 1) GEAR RENTALS (COMM'TY & CAMPUS)
  - 2) BIKE PROGRAM - @ BARN - TRIP LAUNCH, VEHs, Etc.
  - 3) WILDERNESS RESOURCE CENTER (TRAVEL AGENCY)
    - ↳ AS PRE-TRIP MTG SP, PRESENTATIONS (40-60 PEOPLE)
    - PREVIOUSLY 24/7, SELF-SERVICE HRS OF EMU
  - 4) TRIPS - STAFF HELP STUDENTS PLAN THEIR TRIPS
  - 5) PROGRAM EVENTS - (150+ / YR)

- CONNECTION TO RECRUITING/ADMISSIONS
- STAFF 3, STUDENTS 5-7, 9a-5p, VOLUNTEERS
- (DIR OFFICES) (2) (3) DESK SHARED, RECEPTION / CUSTOMER SRVC DESK (2)
- \* (1) GROUP WORKSPACE / TABLE LAYOUT

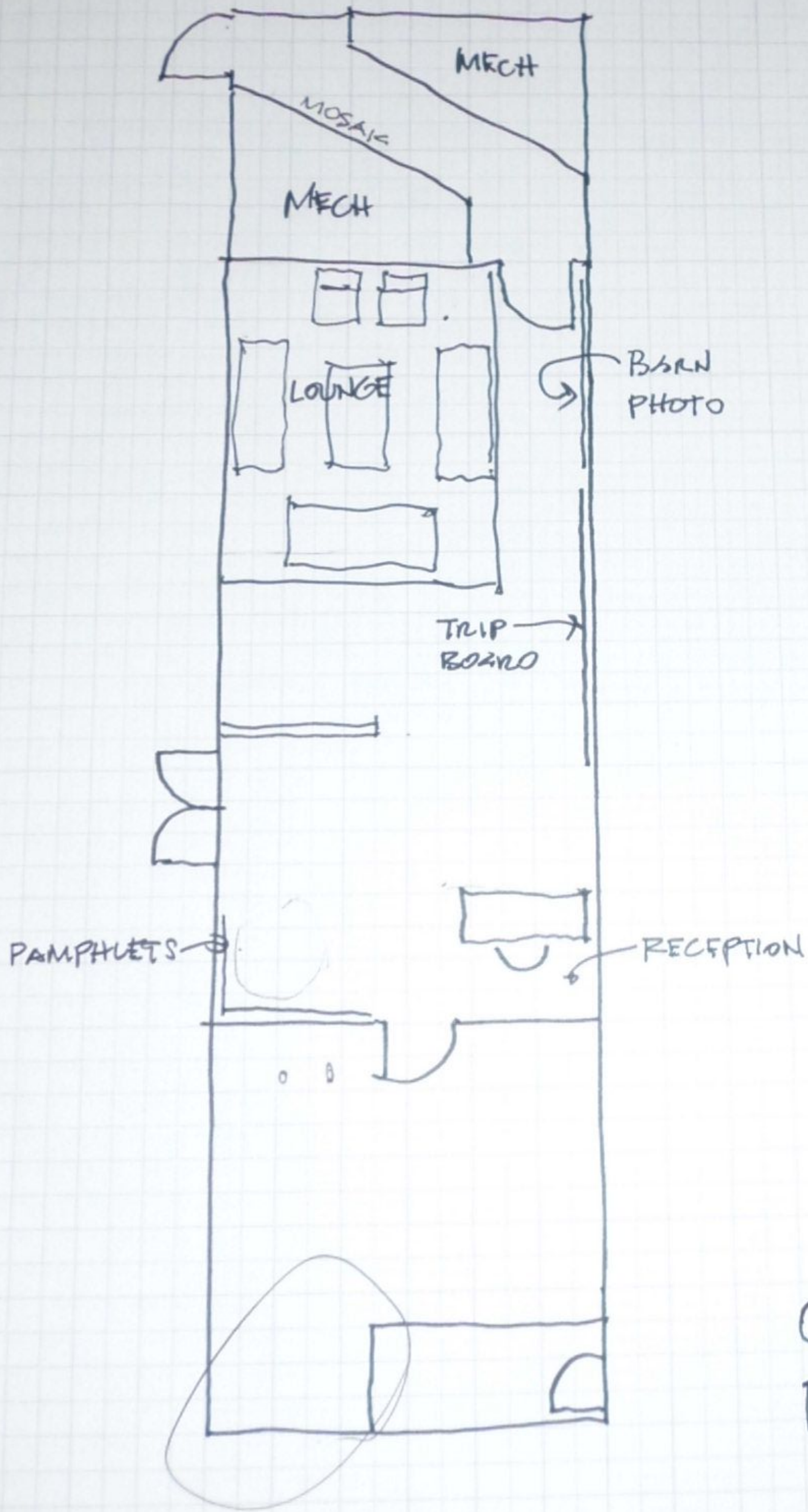
- BIKE CENTER - (200 INTERIOR BIKE PRKG)
  - W/ RETAIL FOR SMALL PARTS, LOCKS, ETC.
  - PROP-OFF, MAINT SERVICES [PSU MODEL]
  - DIRECT OUTDOOR CONNECTION
  - ↳ 1 FITOUT/RETAIL SP IN PROGRAM 2000 SF
  - 1 ADMIN OFFICE, CUST. SERVICE DESK
  - CAN PUT BIKE PRKG NEAR O.P. CURRENT SF
  - W/ RAMP RATHER THAN STAIRS
  - \* LOCATE BASED ON BIKE PATHS/PATTERN (34/UNIV ST.)

- \* RETAIL ORIENTED SERVICE MODEL
- \* STUDENT WAYFINDING IS KEY
- DESTINATION, NOT PASSWAY
- STORAGE - OFFICE SUPPLIES, DISPLAYS
- CURRENT SPACE IS SUFFICIENT
- RESOURCE / MTG SP - SHARED OK, BUT NEED SP. FOR GROUP MTGS.

## ADJACENCIES:

- CLUB SPORTS
- CULTURAL FORUM
- MULTI-CULTURAL CENTER
- SUSTAINABILITY CENTER
- BIKE CENTER NEEDS OUTDOOR CONNECTION, O.P. NEEDS STORE-FRONT





OUTDOOR  
PROGRAM



# OTHER SERVICES: CARD + TICKET OFFICES

**CARD**: PHOTO ID FOR STUDS/PAC/STAFF, PROXIMITY CARDS  
CAMPUS CASH, BADGES

- 8a-5p M-F, 21K CARDS/YR, (PEAK) JULY INTRODUCTION & OCTOBER, LESS THRU YR.
- NETWORK: PT. OF SALES IN EMU, CAMPUS, PDX  
SERVER IN MEBB. OFFICE (JOEL'S + NETWORK SUPPORT)  
STUD. AFFAIRS SERVER CO-LOC'N ELSEWHERE

## SPACE

- QUEUE SP. CAMERA SETUP, WORKSTATIONS COMPUTER SUPPLY STORAGE, PRINTER
- COUNTER - BLOCKS SERVICES FOR PATRONS TO MOVE BEHIND PREFER KEEP IN FRONT W/ CAPTURE STATION
- 2 STAFF (>1/4, 1 FTE), 6 STUDENTS - 3 @ TIME - 2 WORKSTATIONS
- 2 CAPTURE STATION, ABILITY FOR 3RD @ PEAK
- PROXIMITY TO FOOD, PLACES TO WAIT

## TICKET

CAMPUS + PUBLIC - HALL, TICKET WBS ARENA (NON-ATHLETIC), MUSIC/DANCE DEPT STUDENT EVENTS, CONFERENCE REGISTRATION

- 9-5 M-F, PLUS EVENTS IN EMU, THEATRE, BOUL, LA
- PEAK: PRI. PM'S, BEFORE EVENT, MOST PM'S.
- 75-80% CREDIT CARD, SECURED BEHIND WINDOWS
- VISIBLE, EASILY ACCESSIBLE - ON/OFF CAMPUS PATRONS
- 4-5 STAFF, 3 WINDOWS, 2 PHONE STATIONS, 2 WORKSTATIONS (DIR, ASST), 1 SHARED W/S
- SHARE SPACES W/ EVENT SERVICES; WORK/CONF RM STORAGE (OFFICE SUPPLIES 50%), RESTROOM (NEED PROX. D TO SECURITY)
- NEED SEP. ACCESS FROM EVENTS
- ADJACENCIES:  
CONFERENCES, CONCERT HALL, THEATER
- PASSPORT PHOTOS, COLLECT ENERGY BILLS
- EVENING HOURS ALSO
- INTERIOR & EXTERIOR WINDOWS IDEAL

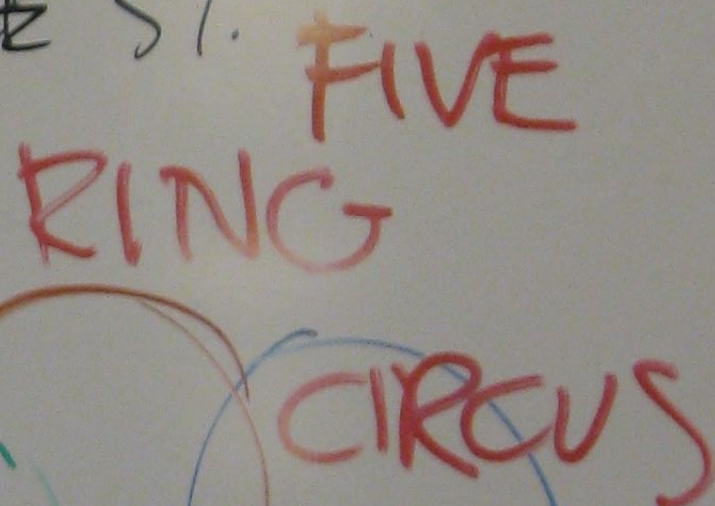


# MILLS INT'L CENTER

- MILLS EVENTS
- OTHER SCHEDULED EVENTS
- RESOURCE LIBRARY - CHECK IN/OUT STUDENTS & FACULTY
- LOUNGE - EATING - COMPUTERS - TALKING INFORMAL CROSS-CULTURAL INTERACTION
- RANDOM (LOST?) DROP-IN

MILLS STAFF IS INTERNATIONAL

UD MISSION ELEMENT: PREPARE ST. FOR GLOBAL SOCIETY



M & F 9-9 & other

2 FULL TIME + STUDENTS  
1 AT FRONT DESK  
OTHERS LESS SCHEDULED

## PROGRAM ADJACENCIES

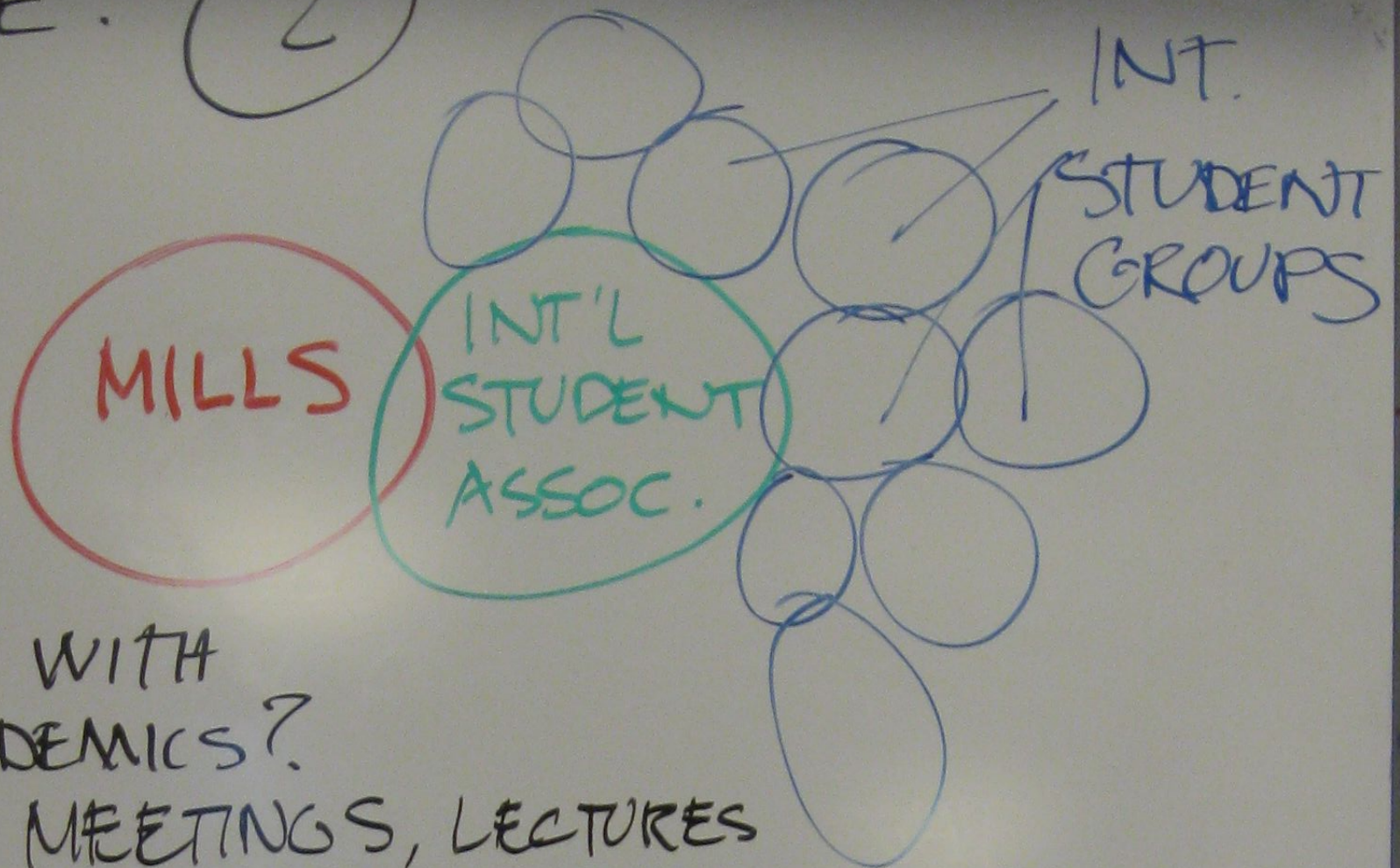
- INT'L STUDENT ASSOCIATION - ADJACENT!  
WEEKLY COFFEE 4-6 FRIDAY @ MILLS, USES KITCHEN
- OTHER INT'L STUDENT GROUPS - COULD BE FARTHER IN BUILDING WITH ALL OTHER EMU PROGRAM FOR SYNERGIES.  
*WHO MAY WANT TO BE NEAR I.S.A.*

HARD TO FIND? NOT AT ALL.  
CURRENT LOCATION AS  
"HIDDEN GEM"

11000 VISITS → 30000  
GROWTH IN 7 YEARS

COULD BE MORE VISIBLE.  
WAYFINDING: OVER POST-OFFICE (UPS STORE)  
INT. STUDENTS KNOW WHERE THAT IS!

PREFERENCE: (2)  
DO NOT  
MOVE



INTERACTIONS WITH  
ACADEMICS?

USED FOR MEETINGS, LECTURES  
NOT SCHEDULED CLASSES  
RESOURCES USED BY ACADEMIC CLASSES

IF RELOCATED, SIMILAR OPEN ENVIRONMENT DESIRED

- NEED EQUIVALENT OR BETTER
- NOT MONOCULTURAL
- COZY & ATTRACTIVE
- EQUIPMENT & FLEXIBILITY

FEW SIMILAR SPACES  
AT OTHER  
UNIVERSITIES

POSSIBLE GENERATOR OF MEETING/CONFERENCE NEEDS?

SCHEDULING OFFICE WOULD KNOW AS THEY FILTER  
REQUESTS

3 PASSPORTS: INTERNATIONAL AFFAIRS FUNDS STAFF

EMU PROVIDES SPACE

STUDENT GOV'T FUNDS PROGRAMS

NO PRIVATE OFFICES - UNIQUE CULTURE

GREAT STAFF RELATIONS &  
COMMUNICATIONS

USE CONFERENCE ROOMS FOR CONFIDENTIAL STUFF

POTENTIAL DONORS TO IMPROVE ADJACENT SPACE

ISSUE: DONOR RELATIONS ISSUES IF MOVED

LOOKING FOR MUSLIM PRAYER - SUITABLE LOCATION  
MEDITATION ROOM?

# ADMIN

RECEPTION - STUDENT STAFF

DONNA L: DIRECTOR'S ADMIN. A.  
& SUPERVISES STUDENTS

DIRECTOR'S OFFICE (WENDY P.)

VAULT - TILLS MADE UP

EMU BOARD OFFICE  
HOURS / LOUNGE

ACCOUNTING - ANDREW & ANDY

JESSIE'S OFFICE - FORMER BUSINESS MGR OFFICE

ALSO SERVES AS 300 SF MTG. ROOM  
+ ACCOUNTING'S BANK OF FILE CABINETS

INFO TECHNOLOGY OFFICE

SERVER CLOSET

JOEL'S OFFICE

PLAN REVIEW SHARED W/ CUSTODIAL COORDINATOR

FACILITIES OFFICE (4 STATIONS) 350 SF

+ DIR (DANA)'S OFFICE 190 SF

NOT MUCH DIRECT STUDENT INTERACTION  
COULD BE MORE "BURIED"  
YET SERVES AT TIMES AS BUILDING  
"INFORMATION DESK"

MEZZANINE CAUSES LOW CEILINGS BELOW

HEAD COUNT: STUDENTS

|||

+ shared office

CURRENT : 2800 NET S.F.

PROGRAM : 4540 SF

STAFF  
|||||

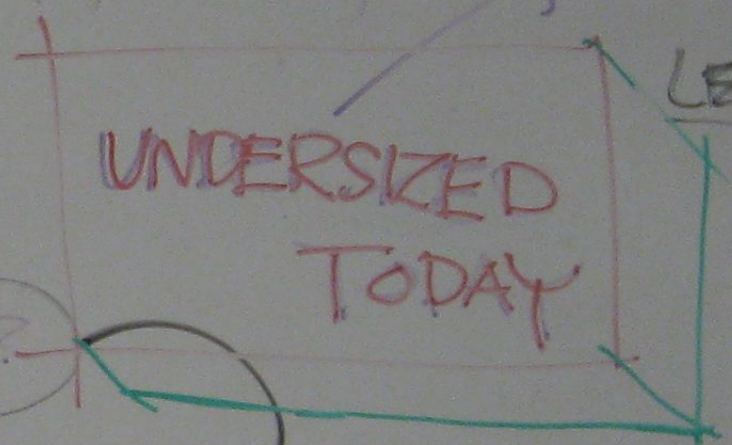
LEADER  
|

NEED MORE SEPARATION FOR MONEY HANDLING

NEED 1 MORE PRIVATE OFFICE (POSSIBLY H.R.)

LONGER HOURS = MORE STAFF?

BOARD STAFF AREA/OFFICE IS DISFUNCTIONAL  
- HOURS  
- LAYOUT



# MARKETING

OPEN COLLABORATIVE

"STUDIO" ENVIRONMENT

7 COMPUTER WORKSTATIONS

WEB DESIGN + PRINT DESIGN FOR

STUDENT AFFAIRS

EMU (E.G. CULTURAL FORUM)

FOOD SERVICE GRAPHICS

CAN BE RESPONSIVE "NIMBLE"

LIKE AN INTERNET START-UP

3 FULLTIME + STUDENTS

DIRECTOR W/ PRIVATE OFFICE

NEEDS: STORAGE - ESP. LARGE FORMAT OUTPUT  
GROWTH

NO ADJACENCY NEEDS

LARGE FORMAT PRINTERS - 2 @ 2' x 5'

PROGRAM: 600 NET S.F. = -47 FT.  
647 S.F. CURRENTLY

CENTER TABLE IS AN IMPORTANT COLLABORATIVE SPACE

GROWING RAPIDLY

REVENUE POTENTIAL

# EMU FACILITIES

10% OF GROSS SF. OF BUILDING  
±20,000 SF

USED SPACE 9,920 SF CURRENT

SEPARATE STAFF, CUSTODIAL, CONTROLS  
FROM UO FACILITIES

12 STAFF + 12-14 STUDENTS  
+ TEMPS AS NEEDED

LOADING DOCK ACCESS  
FOR MATERIALS

SOME IS INEFFICIENT  
OR BASED ON LEFTOVER  
SPACE.

COULD BE 1/3 LESS?

NO BUILDING STORAGE  
LITTLE FOR INDIVIDUAL PROGS

COULD SEPARATE PARTS:  
CUSTODIAL  
ADMIN  
SHOPS  
STORAGE

NEEDS  
FIRE SPRINKLERS  
NEEDS SECOND  
EXITS

PAINT EXHAUST  
PRIPER DUST COLLECTION

- ☐ MAINTENANCE SHOP 1307 SF FABRICATION INVENTORY
- ☐ WOOD SHOP 679 SF
- ☐ OFFICE - MAIN - DANA'S
- ☐ CUSTODIAL SUPPLIES & EQUIPT 1138 SF (NOT INCLUDING CUST. CLOSETS)

SEE UO STDS.  
FOR CUSTODIAL?  
GET ITEMIZED  
SPACE LIST



# CRAFT CENTER

MISSION: STUDIOS & SHOPS  
TO DEVELOP TALENTS & SKILLS  
IN THE VISUAL ARTS

- 3 FULL FTE EMPLOYEES
- 3 PART-TIME
- 35 STUDENTS
- 35 INSTRUCTORS
- + STUDIO VOLUNTEERS
- + ARTISTS IN RESIDENCE

- STUDIOS
- PAINTING/DIAG
  - CERAMICS
  - WOOD
  - JEWELRY
  - GRAPHICS/SCREENING
  - PHOTOGRAPHY
  - GLASS
  - FIBERS
  - WELDING/BLACKSMITHING
  - SCULPTURE

AFTER NOON EVENING PEAK USE

UP TO 85/40 TOTAL  
COMMONLY 30-40

- 10-10 M-F
- 10-6 SAT.
- 12-8:30 SUN

80 WORKSHOPS PER TERM

VISIBILITY TO STREET & BLDG. BOTH IDEAL  
IF CHOICE, PERHAPS 15TH  
CODE & INDOOR KILNS

INDOOR  
OUTDOOR "YARD"

SINGLE ENTRANCE  
MULTIPLE EXITS  
25% STORAGE?

SATELLITE STORAGE  
" " STUDIO @ 3RD FLOOR "SKYLIGHT"

- OUTDOOR PROG
- CLUB SPORTS
- CULTURAL FORUM

PROXIMITIES

[YET NOISY & STINKY & ...]

OPPORTUNITIES FOR OVERLAP &  
VARIOUS USE OF GENERIC SPACE?  
VS. WEEKLY/DAILY SET-UP FOR WORKSHOPS

NEAR STUDENT GROUPS:  
DESIRABLE

JOINT PROGRAMS WITH  
ARCH. & ALLIED ARTS?  
VS. SAFETY & STORAGE  
& ACCESS

PROGRAM	6,117 NET S.F.
CURRENT	10,000 INCL. YARD AS PLANNED ± 7,900 INTERIOR SPACE.

DAYLIGHT & VIEW IS PART  
OF THE ATTRACTION TO USE  
SPECTACLE FROM OUTSIDE, ESP. GLASS

**GALLERY** WOULD BE VERY USEFUL  
RETAIL SALES OF MATERIALS  
MAJOR DELIVERY & STORAGE REQUIREMENTS  
FORK LIFT EVERY FEW WEEKS  
RECYCLING EVERY FEW WKS.  
NORTH LIGHT DESIRABLE

VIEW OF ACTIVITIES  
... FROM 15TH?

NEARBY  
RESTROOMS  
LOADING/PARKING  
NEEDS FOR  
DROPOFF

PROVIDE CURRENT  
SPACE BREAKDOWN  
+ DESIRED GROWTH

RECREATION SUITE?