

# SCHEDULING & EVENTS ①

13,000 EVENTS/YR  
CONSTRAINED BY  
SPACE

- PROVIDE EVENT SERVICES
- TO DIVERSE COMMUNITY
  - FLEXIBLE, NIMBLE, RESPONSIVE

SCHEDULING SPACES IN & BEYOND EMU

EXTERNAL - SERVICE

NEED TO ADD STAFF  
AS EVENT NUMBERS  
GROW

→ EVENT SERVICES PROVIDES  
SUPPORT SERVICES

INTERNAL - MAINT & EQUIP.

SCHED. HOURS 8-5 - ON MAIN LEVEL, EAST WING

EVENTS - TRY TO AVOID 2AM - 6AM  
IN COAT CLOSET BY BALLROOM

5 DESKS FOR STAFF, 3 FOR STUDENTS

9 STUDENTS AT ANY GIVEN TIME

SCHED. STAFFS INFO CENTER AS WELL

ANSWERS ALL TYPES OF QUESTIONS

CO. LOCATION HAS BENEFITS, CHALLENGES  
PROXIMITY MIGHT BE AS GOOD, BETTER

LONG LIST OF  
PROG. SPACES -

ALL BUT:

- MULTICULT. CTR.
- PRIVATE OFFICES

1/2 DOZ EVENTS USE ALL SPACES & SERVICES

INTERMINGLE  
GRADUATION

- SCHED. OUTDOOR SPACES
- NON ACADEMIC CLASSRM  
USES
- GERLINGER LOUNGE

HIGHEST USE IN SMALL MTG ROOMS → 16  
FIR ROOM (MID-SIZE)

SOME SPACES PREFERRED BY STUDENTS E.G. BEN LINDER ROOM  
25 - 35 GAP BETWEEN SMALL & MID-SIZE ROOMS  
ONLY WALNUT, FIR

NO COVERED OUTDOOR SPACE

SMOKERS ON TERRACES, ALSO SUN-SEEKERS

BEN LINDER - NEED MORE EFFECTIVE VERSION

TIERED - INTIMATE - FLEXIBLE - COMFORTABLE

# SCHED. & EVENTS

## PROGRAM OF SPACES

SMALLEST AT 10?

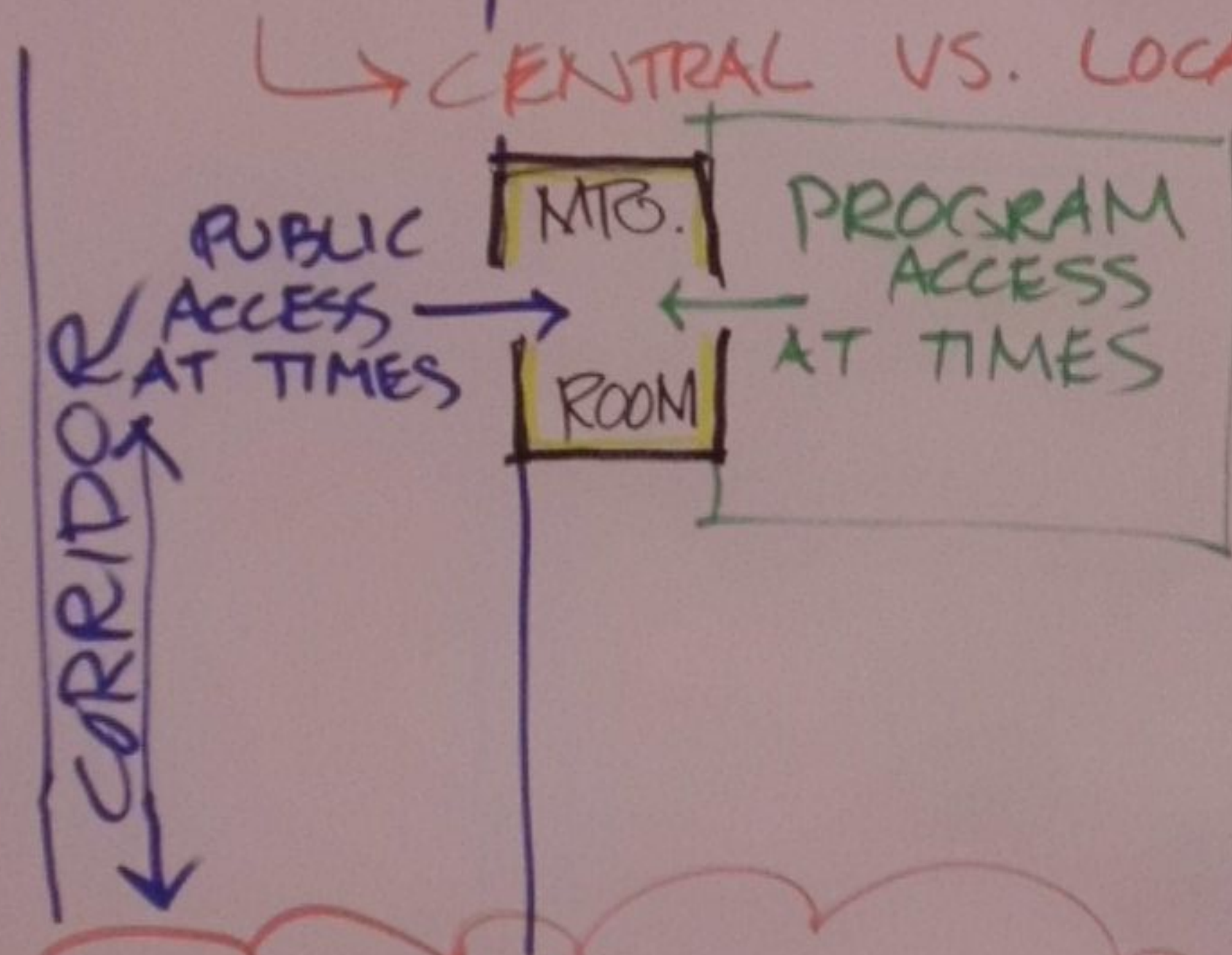
OR ALSO SCATTERED SMALL ROOMS?

STRONG POLICIES NEEDED

BETTER DOOR/LOCK SYSTEMS - ELECTRONIC LOCKS?

DIGITAL SCHEDULE DISPLAY?

MORE OPEN OFFICE = MORE SMALL MTG. ROOMS



0 @ 1880 = 3000 SF  
AUDITORIUM/THEATRE

1 @ 134 cap. = 2200  
TABLES  
VS. FIR @ 2700

2 @ 80 cap. = 1200 SF EACH = 2400 SF  
172  
400 MAX PACK #

4 @ 60 cap. = 900 EACH = 3600 SF  
129  
180 MAX

8 @ 400 = 400  
RESOLVE CURRENT CAPACITY VS. GROWTH VS. FINANCIAL PRO. FORMA

PROTECT SOME SMALL (6-25) ROOMS FROM CONFERENCE USE

RIGHT-SIZE OFFICE NUMBERS & ROOM SIZES

ADD OFFICE SPACE FOR GROWTH

2 OFFICES IN SCHED.  
+ 8 OPEN STATIONS

7 STAFF IN EVENTS  
1 SHARED STATION

# OREGON DAILY EMERALD

RYAN FRANK

501(C)3 112 YRS OF SERVICE  
NOT PART OF J. SCHOOL

WAS NEWSPAPER, NOW A MEDIA COMPANY

INDEPENDENT, BUT INTRINSICALLY LINKED TO  
AND LOCATED AT UO.

PROVIDE NEWS/SPORTS/ENTERTAINMENT

WINDOW A/C UNITS?  
USED ~ 15 DAYS/YR  
SERVER SPACE ISSUE

3/4 OF WEB HITS FROM OFF-CAMPUS

NOW CREATING STUDIO FOR VIDEO + PHOTO SHOTS

PARENTS PROJECTS ALUMS.

"PLATFORM AGNOSTIC" - RADIO/PRINT/ON-LINE

↳ KWVA

↳ M-F 10 WKS + 1 WEEKLY IN SUMMER

↳ SHARE W/ T.V. STATIONS

STUDENT PERSPECTIVE, SERVE COMMUNITY

HRS: NEED 24/7 ACCESS, UPLOAD DAILY AT MIDNIGHT,

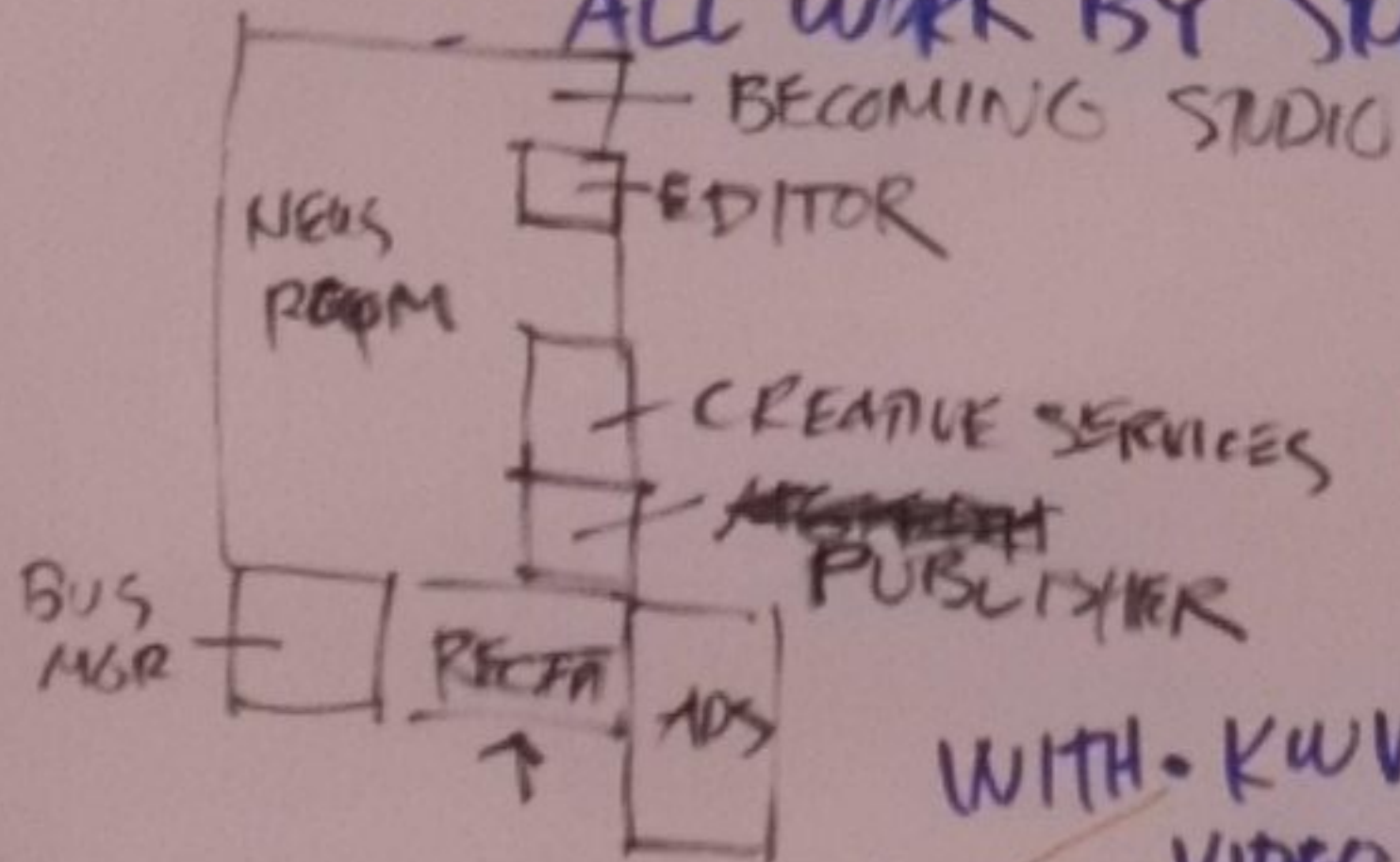
OFTEN THERE UNTIL 4 AM

OTHERS START AT 6 AM

STAFF: 4 PROFESSIONAL

- PUBLISHER BUS-MGR ADMGR CREATIVE MGR

- ALL WORK BY STUDENTS 5 SALES REPS



BIKE DELIVERY

40-50 NEWSROOM

NEEDS: VISIBILITY  
PRESENCE  
LINK TO KWVA  
DYNAMIC NEWS  
STUDIO SPACE  
LIVE

50-75 STUDENTS  
ALL PART-TIME

SEND PRECEDENTS FROM ELSEWHERE

+ OTHER CAMPUS MEDIA?

E.G. COMMENTATOR, OREGON VOICE  
ETHOS, FLUX

PROGRAM: STUDENT

STATIONS @ 15 LOOKS LOW

WITH KWVA CO-LOCATION - SOME

2 PRIVATE OFFICES + SMALL MTG RM.

SPACE SYNERGY POSSIBLE

+ MORE STUDENT STATIONS: 25-30

# COMPUTER LAB

SERVE STUDENTS BUT IN DIFF. WAY

↳ LANDING SPACE, PROJECT WORK / GROUP  
\$\$ SOFTWARE

SCATTERED THRUOUT EMU

93% students have laptops

1) HI-TECH / HI-TOUCH: SECURED

↳ NEAR STUDENT GROUPS, MTG SPACES

MANAGEMENT, NETWORK SUPPORT, MTG ROOMS  
SCHEDULED - SCATTERED DEPENDING ON TECH NEEDS.

2) MONITORS STATIONS, ACCESS, CAPE-LIKE

3) LOW SECURITY, MORE COMMON TECH'LY

SOFTWARE NOT TIED TO LAB EQ. SOUELY

TRAINING NEEDS: ZERO WEEK W/ 100 PEOPLE

W/O CLASS CONFLICTS

EMU HAS 120 STATIONS

7:30<sub>a</sub> - 11:30<sub>p</sub>, 7 days variable

HI-TOUCH ZONE:

30 STATIONS - FLEXIBILITY!

NO COLUMNS  
RAISED FLOOR

ISSUES: FINDING AVAILABLE STATION  
W/O WANDERING

- QUIET OR NOISY? PRIVATE
- ADEQUATE OUTLETS, TABLES
- BRIDGE CPU'S → PERSONAL LAPTOPS LAYOUT SPACE

STAFF/SQ FT:

(1) SHARED WORKSTATION: DAY/NITE  
TECH SUPPORT - (1) MANAGER  
(3-4) TECHS

STORAGE

WORKROOMS (3-4 - 10 PEOPLE)

EXISTING FRONT MEETING RM

IS VARIABLE, HI-TECH

(1) LARGE, (2-3) SMALL 5 PEOPLE  
15 PEOPLE [HI-SUPPORT]

- PRACTICE PRESENTATION RMs

PROJECTOR [MED] W/ INSTRUCTION

"BARISTA SECURITY"

Based on current space available

# CALL CENTER

CURRENTLY

MISSION: RAISE \$\$ FOR ACADEMICS, ~ \$1M/YR

20-30 PER NIGHT, ALL BUT SAT.  
ALL YEAR ROUND

5:30-10 CALLING  
4-10 OPERATING } M-TH

3-8:30 FRI

12-10 SUN CLOSED SAT

CURRENT - OPEN CALL CTR.

NO SEPARATION BTWN. SIDES OF STATIONS  
TALL PARTITION DOWN THE MIDDLE  
SOME BUZZ IS GOOD

3 SUPERVISOR STATIONS - MONITOR CALLS, DATA

SECURITY ISSUES OF DATABASE - CPUS IN SECURE CABINETS

STANDARD OFFICE LIGHTING - BRIGHT IS GOOD (STAY AWAKE!)

STAFF: 55 TOTAL - 54 STUDENTS - MANY RETURN ANNUALLY  
(LESS TRAINING)

33 STATIONS - 3 OF 33 SUPERVISORS

23-33 AVERAGE -

55 STATION CAPACITY

SECURE YET CLOSE TO BREAK, COFFEE

EMU LOCATION HELPS RECRUIT, RETAIN STUDENTS. PROVIDES VISIBILITY

CONNECTIONS TO HOLDEN LEADERSHIP - NICE TO CULTIVATE RELATIONS W/  
OTHER STUDENT PROGRAMS, ESP. ASUO

LOCKED MACHINES ALLOW OFF-HOUR USES BY OTHERS

POSSIBLE MULTIPLE USE AS MEETING ROOM OR DROP IN LAPTOP ROOM

MEETING ROOM USEFUL FOR CALL CTR.

# CLUB SPORTS

STUDENT RUN, OFFICES

50 SPORTS - 1 COORDINATOR @

1500 PARTICIPANTS

\* COORDINATORS USE OFFICE FOR BUDGETS, SCHEDULE, MTGS.

\* INFORMATIONAL FOCUS ALSO

STILL GROWING → CONFERENCE NEEDS

TRIPS DEPART FROM OFFICE - TRAIN VAN USERS

PRIVACY NEEDS FOR ADVISING

8:30-5:00 / 11-3 HI-TRAFFIC

ADJACENCIES = OUTDOOR PROGRAM

STUDENT REC CENTER

\* VEHICLE TRAFFIC PROXIMITY

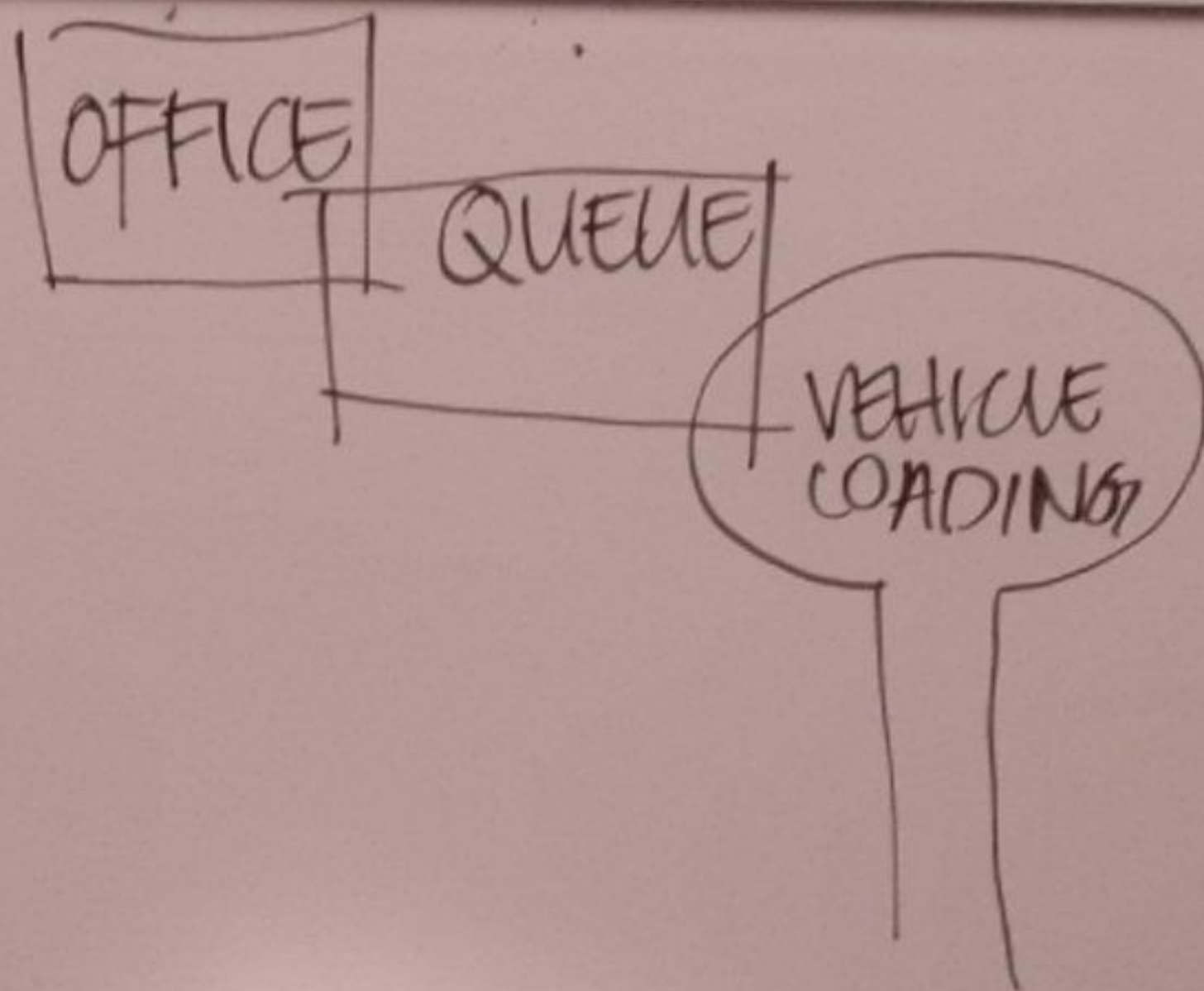
TEAMS GATHER OUTSIDE OFFICES

FRIDAY CHECKOUT, CAN BE ONLY

MEMBER INTERACTION WITH OFFICE

FRESH WALK BY OFFICES: WINDOWS!

TRAFFIC, STOREFRONT



EXISTING STORAGE IN GYM 190SF

ISSUES W/ ENTRY WAY

LIKE HOLDEN'S W/ FRONT PRESENCE  
1 DIRECTOR

3 FULL TIME STAFF

8-10 STUDENT WORKSTATIONS

# HOLDEN LEADERSHIP

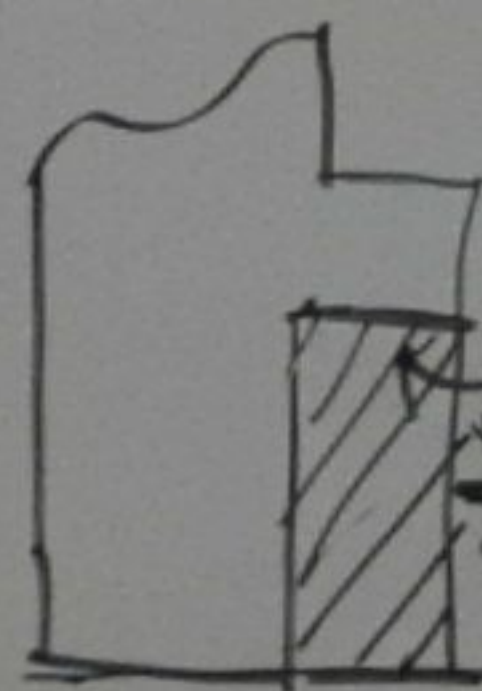
6 YEARS, HELP STUDENTS W/ LEADERSHIP OPPORTUNITIES  
ACTUALIZATION OF POTENTIAL - COMPASS PT. FOR STUDENTS

SERVE ALL 24K STUDENTS  
→ CURRICULUM, ADVISING, LEADERSHIP, COMMUNITY ENGAGEMENT

INCLUDES GREEK LIFE

8A-5P, STUDENTS UNTIL 11:30P (BLDG CLOSERS) = ACCESS SECURITY  
WEEKENDS 2X/MONTH

STAFFING: 10 (9 FULL TIME, 1 GTF) | 4 CLOSED OFFICES - ADVISING, PRIVACY WORKSTATIONS  
30-40 STUDENTS

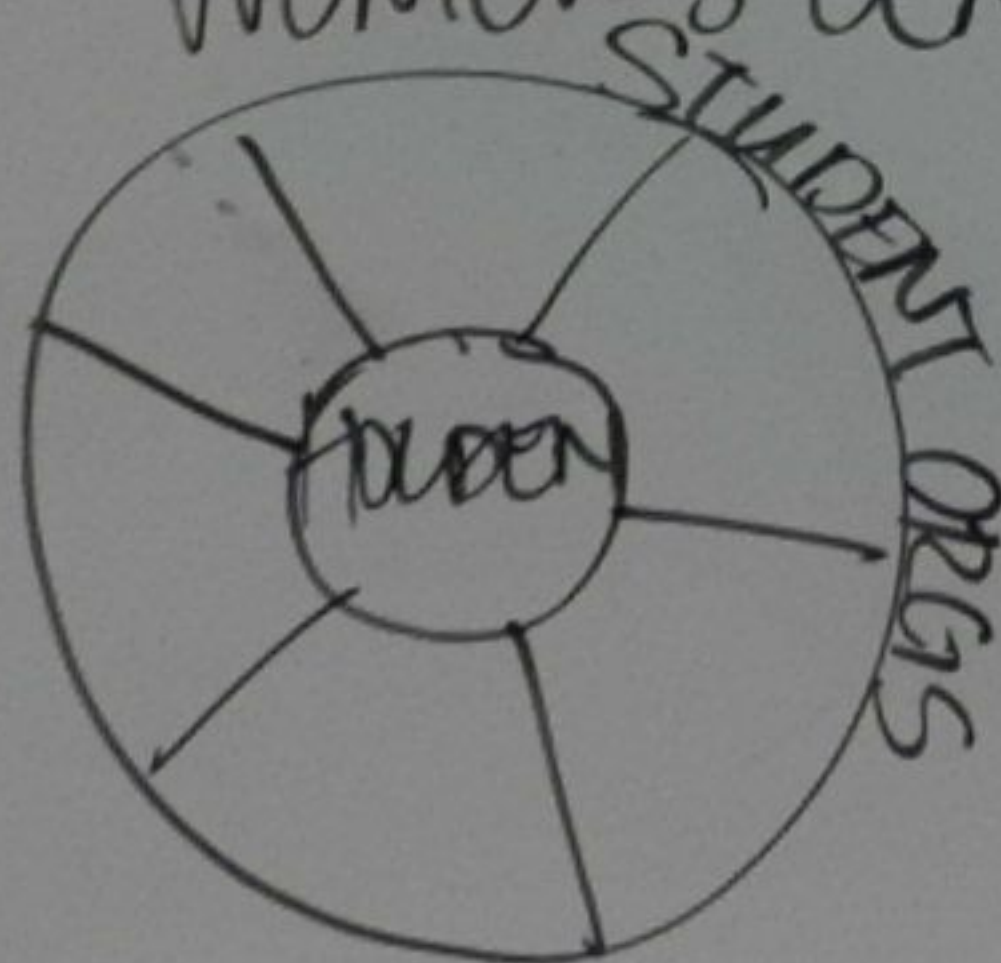


CURRENTLY UNDER HOLDEN SPACE COUNT.

\*LACK NATURAL LIGHT, LEAKS FROM FOOD VENUES ABOVE  
WAYFINDING!

ADJACENCIES: STUDENT ORGS / UNIONS = STUDENT LEADERS

WOMEN'S CENTER, INT'L CENTER, OUTDOOR PROGRAM



@  
LATE NITE  
ZONE

NEEDS: SUNLIGHT, 13<sup>th</sup>/UNIV.  
STREET STOREFRONT.

# MCC & STUDENT UNIONS

MCC MISSION: INCLUSIVE PROGRAMMING, 9 STUDENT ORGS  
 USE SP. FOR MTG SPACE, 12-40 STUDENTS / MTG,

\* HUGE ARRAY OF USERS & USES - SERVE STUDENTS

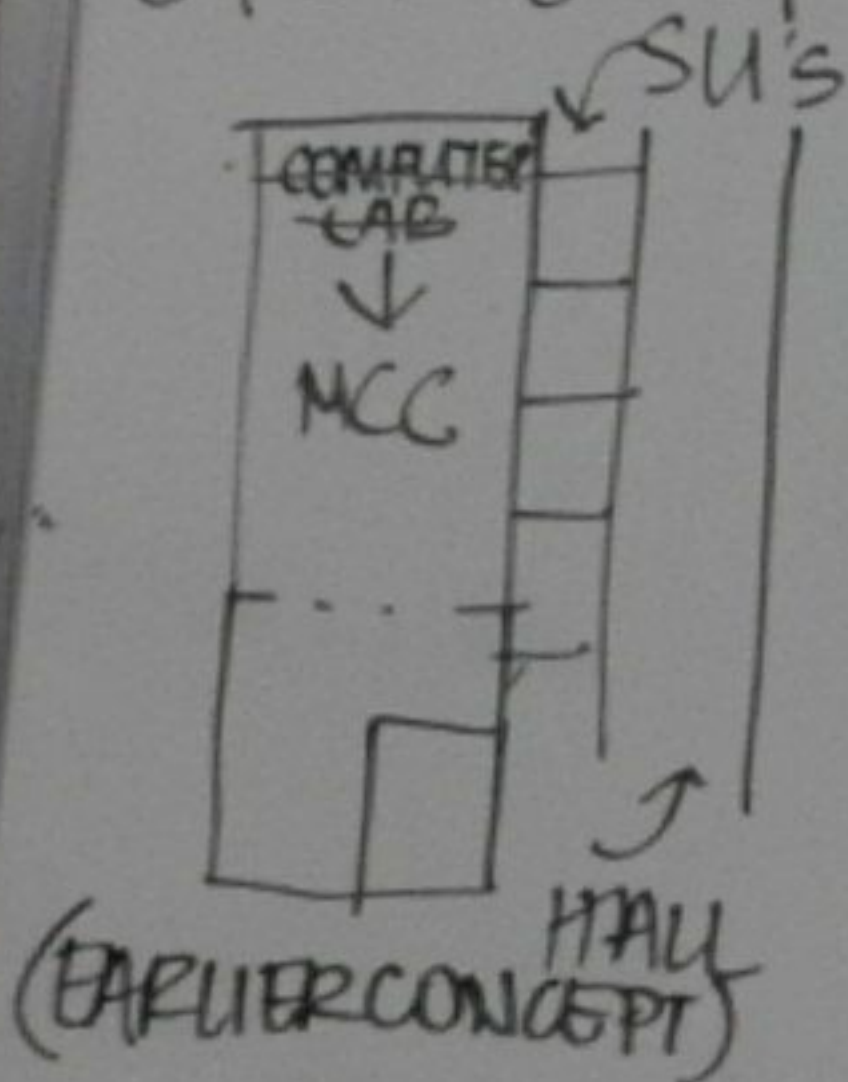
EMU HOURS 8a-10p - LONGER IF ABLE, PEAK @ 4p-6p...

COMPUTER STATIONS (5), PRINTERS

DESIRE USE AS PERFORMANCE SPACE ← MOVIES  
 SPEAKERS  
 PROJECTS

BRING STUDENT UNIONS TOGETHER = HOME

OPEN DOOR POLICY



NEED: VISIBILITY, SPACE SQ FT.

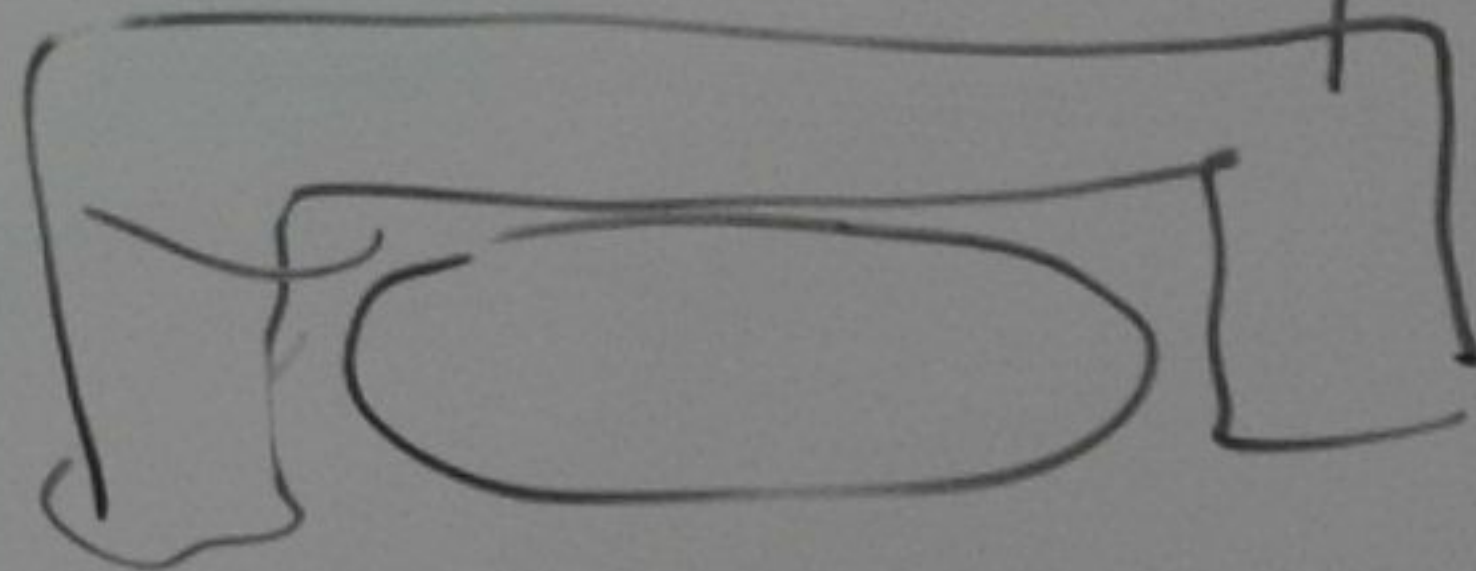
LOUNGE SPACE

100+ SPACE-GATHERING, w/STAGE

LIBRARY SP.

ACCESSIBLE, DROP-IN  
 KITCHEN

FLEXIBLE



~ OHIO STATE: MEDIA ROOM / MESSY PROJECT SPACE

SEPARATE FUNCTIONS: MTG, LOUNGE, WORK

BUT IN CLOSE PROXIMITY - MULTIPLE EVENTS @ 1 TIME



# MCC & STUDENT UNIONS

MECHA - 30 YRS LIBRARY NEED, 2 COMPUTERS  
 RENT OUT MACCT-CONFERENCE  
 COMMUNITY OUTREACH & HOST IN EMU ART PROJECTS  
 EACH GROUP NEEDS AUTONOMOUS SPACE

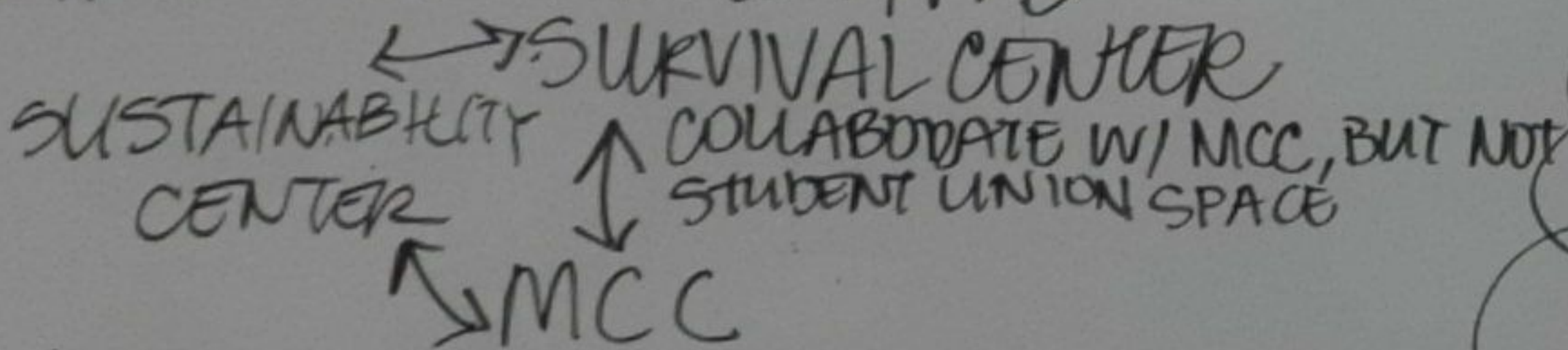
\*RIVER ROOMS & HALLWAY & FOUNTAIN COURT

LGBTQA - SEPARATE, SECURE PATHWAY  
 BUT PROXIMITY

STACKING

EMPHASIZE PLURALITY, MULTIPLE MEMBERSHIP

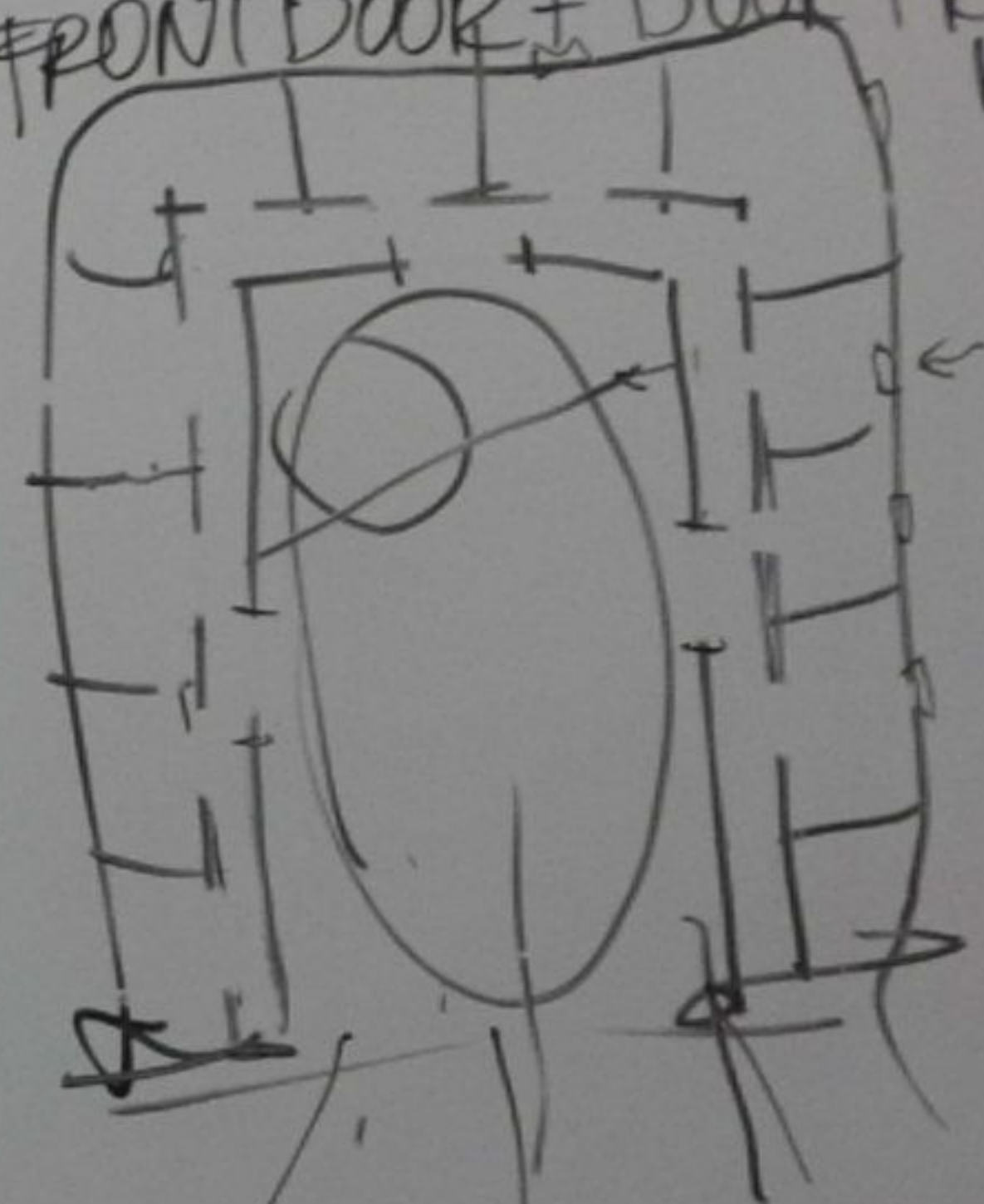
SYNERGIES - MILLS INT'L



\*ACTIVE ENGAGEMENT OF/FOR STUDENTS

COMMON needs

- LIBRARY
- STAGE
- COUNGE
- KITCHEN
- PROGRAM AREA
- COMPUTER
- LATE NITE
- INDEPENDENT SPACE
- FRONT DOOR & DOOR FROM MCC



- OUTDOOR SPILL OUT SPACE
- SAFE SPACES FOR ALL
- WARM, WELCOMING
- SCALES OF LOUNGES



# RESOURCE CENTER FOR STUDENT ORGS

160 STUDENT ORGS RECOGNIZED BY ASUO

MOSTLY WITHOUT OFFICE SPACE - 2 STORAGE AREAS  
STUFF: PROPS, COSTUMES, TABLE LINENS, ETC

- IN EMU
- AT CANOE HOUSE

2 X TERM MEETING OF GROUPS + EMAIL/LIST SERVES

RANGE: CHESS CLUB TO MEDICAL COMBAT

4-5 MEMBERS TO 40-50

SEND LIST TO MAIL@OREGON.EDU

• NON-FEE FUNDED - USE FACILITIES, ETC

• ASUO-FUNDED

NEEDS: STORAGE - LOCKERS? PROGRAM IN A TOTE.

SMALL PRINTER & COMPUTER

CONFERENCE SPACE

## NEED

- COMPUTERS
- PRINTERS
- COPIERS
- STORAGE
- PRACTICE SPACE
- GROUP WORK/PROJECT SPACE

QUESTION: HOW TO SERVE MORE STUDENTS?

HOW WOULD RESOURCES LEAD TO MORE ACTIVITY?

LARGER GROUPS CO-SPONSER NEW/SMALLER GROUPS

PUSH BACK AGAINST "HOARDERS"

NO KITCHEN FOR THIS AREA!

= LESS STRIKE

NEED: AVAILABLE KITCHEN TO SCHEDULE FOR CULTURAL DINNERS

"KINKO'S ON STERIODS PLUS LOCKERS"

INCLUDE OFFICE OF STUDENT PROGRAM COORDINATOR

WITH DOOR

PROGRAM

1400 SF

8:30 to 5

WITH PROXIMITY TO PROGRAMS MLC, WOMEN'S CR, ETC

COULD BE IN TWO ZONES FOR CONVENIENCE

INCUBATOR FOR GROWING PROGRAMS MICRO-CONFERENCE ROOM?

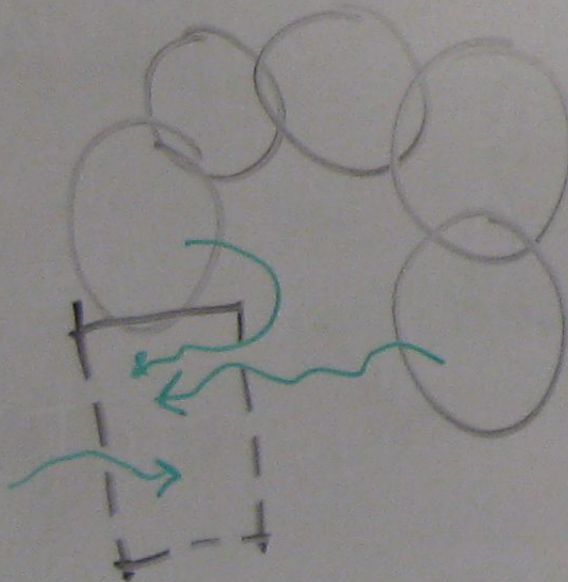
30-40 PEOPLE AT ONE TIME

CARD SYSTEM FOR AFTER HOUR ACCESS FOR SELF-SERVICE AFTER HOURS

SAFERIDE

& DESIG. DRIVER SHUTTLE DISPATCH & LATE NIGHT = DEDICATED SPACE WITH INDEPENDENT SPACE

DESK WITHIN WOMEN'S CENTER



ASUO

+ SUSTAINABILITY CENTER

+

WOMEN'S CENTER

→ CURRENTLY FORMER ICE CREAM STORE ~ 15 X 30  
WORK WITH 12-15 STUDENT GROUPS (WITH NO OFFICE SPACE)  
NO CONFIDENTIAL SPACE - NEED - A DOOR THAT CLOSES

288 S.F. = CURRENT  
930 S.F. = PROGRAM

- SPACE FOR STUDENT STAFF
- MEETING SPACE
- DAYLIGHT

ASUO  
OUTDOOR PROGRAM  
SURVIVAL CENTER  
MULTICULTURAL CENTER

HOURS 10-5

NEED STUDENT ORGANIZATION ZONE(S)

HUB FOR STUDENT LED INITIATIVES ...

WOMEN'S CENTER

LARGEST IN PAC-12  
16-25 STUDENT EMPLOYEES  
5  
2 FULL TIME PROFESSIONALS

+ VOLUNTEERS

NEED: LOUNGE  
BABY SPACE  
PRIVATE DISCUSSION SPACE  
CONFERENCE SPACE  
PROFESSIONAL STAFF OFFICES

CURRENTLY 7 STUDENT STATIONS  
UP TO 135 PEOPLE/DAY

930 = PROGRAM  
1082 = CURRENT

CREATE SAFE SPACE

8am - 2am OVERALL HOURS

ALSO PROVIDE:  
A SMALL COMPUTER LAB  
7 STATIONS DOUBLE USE

NO EMU EMPLOYEE LOUNGE SPACE  
→ SHARED KITCHEN @ WOMEN'S CENTER

LATE NIGHT ACCESS FOR ASUO  
SAFERIDE KEEPS WOMEN'S CENTER OPEN LATE  
LAYING OF SECURITY ACCESS

HOST: SAFERIDE  
STUDENTS FOR CHOICE

SWAT

CONNECTIONS

- \* ETHNIC STUDENT UNION
- \* LGRTA
- \* ASUO
- \* MILLS INT'L CENTER
- OTHER CAMPUS ENTITIES
  - WOMEN'S STUDIES
  - CSWS

ASUO

+ SUSTAINABILITY CENTER

+ WOMEN'S CENTER

↳ LARGE, COMPLEX ORGANIZATION WITH MULTIPLE VIEWPOINTS

STUDENT GOVERNMENT FOR ALL ENROLLED STUDENTS

STATEWIDE & NATIONAL ACTIVISM & ORGANIZATIONS

STAFF OF 15 • RESOURCE • ADVOCACY • HUB

+ PRESIDENT/VICE PRESIDENT/CHIEF OF STAFF  
p.g. VOTER REGISTRATION OF MANY ACTIVITIES

~ 1500 SF CURRENT  
2100 SF PROPOSED

+ STUDENT SENATE

TOTAL UP TO 30 PEOPLE (NOT ALL AT ONCE)

+ FINANCE COMMITTEES

5 PROFESSIONAL STAFF - 4 STUDENT AFFAIRS + 1 ORGANIZER THROUGH USA

MEETING ROOM  
BREAKOUT ROOM  
PRIVACY ROOM  
STORAGE } ONE ROOM

STUDENT EMPLOYEE TEAMS 4-5  
INCLUDES CONTROLLER OFFICE & FINANCIAL TRANSACTIONS

22 DESKS

NEED MORE ENCLOSED OFFICES: PRES., V. PRES., PROF. STAFF

- MAJOR INTERACTION WITH  
EMU ACCOUNTING - ASUD PROF. STAFF  
ASUD - EMU SCHEDULING  
PROXIMITY TO STUDENT LOUNGE  
SPACE IS GOOD

EXAMPLES FROM ELSEWHERE









