

Project Number 11045

Purpose Subject Area Committee Meetings – KWVA Radio Station
Location EMU – Fir Room
Start Time 8:00 AM

CONFERENCE REPORT

01 THOSE PRESENT

KWVA Radio Station

Charlotte Nisser, Lauren Karell, Thor Slaughter

University of Oregon, Campus Planning and Real Estate

Martina Bill

University of Oregon, Capital Construction

Darin Dehle

University of Oregon, Student Affairs

Gregg M. Lobisser

EMU User Group

Wendy Polhemus, Mandy Chong, Dan Geiger

SERA Architects

Natasha Koiv, Audrey Craig

AC Martin

Bob Murrin, Tammy Jow, Christopher King

02 MISSION

KWVA is the student radio station, providing live music, sports and news 24-hours/day, 365-days/year. The purpose is two-fold: first to provide an opportunity and experience for students and community members who want to be involved in a broadcast facility, who want to learn to produce news, sports, and music, and who want to gain leadership experience; second to provide listeners with a source of content that is not heard anywhere else.

03 ORGANIZATIONAL STRUCTURE

See attached chart: KWVA-FM Personnel Structure, As of 1/25/2010.

04 HOURS OF OPERATION

24 hours, 365 days/year.

05 FREQUENCY OF USE

There are generally 3-4 non-staff visitors at all times, every day.

The peak occurs from 5 pm to 7 pm when there is an average of 8 non-staff visitors, daily.

06 STAFFING AND WORKSTATION REQUIREMENTS

- 1 Full-time General Manager with a dedicated private office.
- 1 Part-time Assistant General Manager with a dedicated private office.
- 5 Part-time Directors with shared open workstations; one each for sports, music, news, program and marketing.
- 3 Part-time Assistant Directors with shared open workstations, one each for sports, music and news.
- 1 Part-time Production Director with a dedicated private office.
- 1 Part-time Band Associate with a dedicated private office.
- 5 Part-time shared open workstations for ticket, mem., merch, spons, events.
- 1 Part-time Contract Engineer with a dedicated private office.
- 150 Part-time DJ's in a dedicated private office.
- 20 Part-time News Volunteers in dedicated open workstations.
- 5 Part-time Office Assistants with dedicated open workstations.

07 TYPES OF SPACES REQUIRED

A reception/waiting area is required that should include:

- Desk
- Computer
- Signage
- Connection to other spaces via speakers
- Audio from studios available to play over speakers

A conference room is required that is ideally dedicated, but could be shared (as in a media center setting). It needs a large table, comfortable as well as stacking chairs, computer connection, projector and screen, audio.

A dedicated work area is required. A shared work area is needed as well. Multiple small studio spaces as well as open work spaces.

Dedicated storage is required for equipment used for check-out purposes and is easily accessible. Also a separate equipment storage for new items, items no longer used. This space can be tucked back in an off-space.

Other space needs not previously described:

on-air DJ studios x3 w/storefront	Equipment/server room
production studios x3	workbench equipment service room
band performance studio	all spaces should be wired with audio connection to other spaces
(speakers/music)	
music library	
Newsroom	

Other equipment needs not previously described:

-high capacity equipment room to include at least 2 equipment racks w/ 360 degree access to each, and workbench will draw significant power needs, internet and fiber sources needed.

- on-air studios need to accomodate 2-desk mountable equipment racks (for cd players, delay unit, cassette, DAT) also desk space suitable for turntables to be inset in desk/counter, and large board/mixer, mounted microphones, 2 computer monitors/keyboards/mice, and empty desk space for use.

08 ADJACENCY REQUIREMENTS

KWVA should be directly adjacent to: Cultural Forum, Oregon Daily Emerald, Media Center, Video Production, and the Loading Dock.

09 VISIBILITY, ACCESS, AND SECURITY

The KWVA Radio Station should be located near the front door, highly visible.

Card lock doors to record access into KWVA are required.

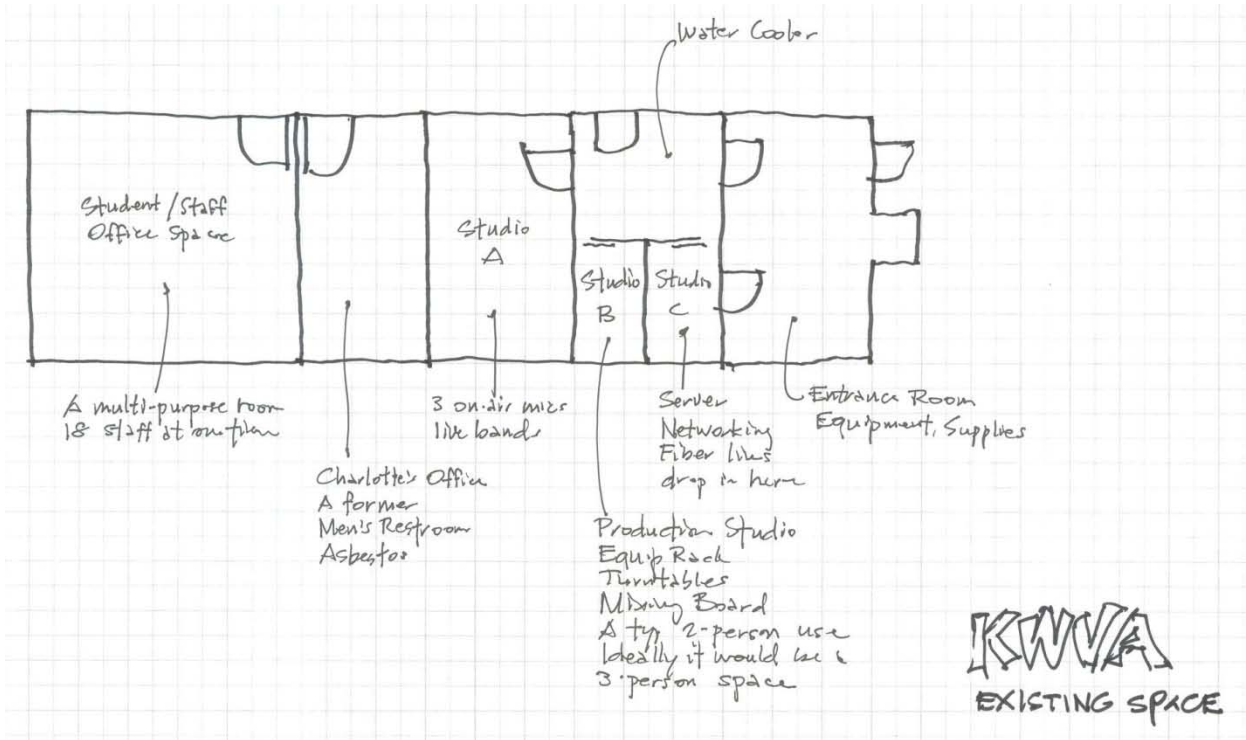
KWVA is a "user" of a larger computer network where the system is operated by another department.

10 KWVA EXHIBITS, SKETCHES AND NOTES

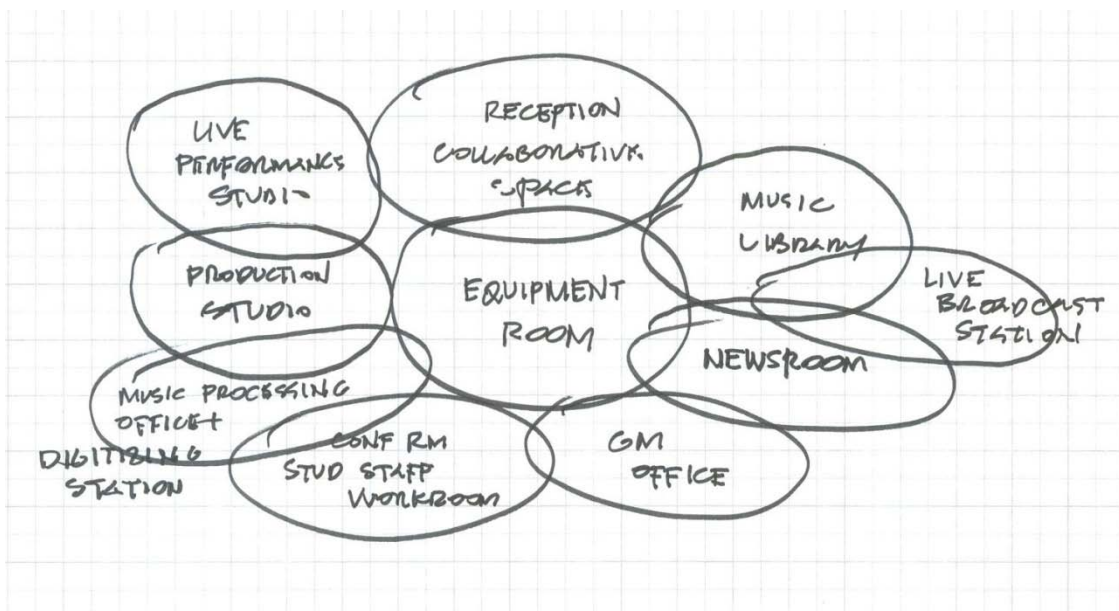
The following exhibits (attached) have been provided by KWVA Radio Station:

- Media Center Letter to Robin Holmes
- KWVA-FM Personnel Structure, As of 1/25/2010
- KWVA-FM Integrated Broadcast Suite

KWVA Existing Plan



KWVA Space Relationships for Future Space



Notes:

KWVA proposes the concept of a Media Center in conjunction with the Oregon Daily Emerald. This is an opportunity to showcase KWVA and ODE – departments that are currently behind the scenes, but essential to student life. A storefront location is ideal.

KWVA needs a dedicated space for band performances. Bands are typically comprised of 4-5 and up to 6 members. Ideally the performance room would be adjacent to the sound engineering room. It could share space with ODE. Alternatively, bands could be placed in close proximity with live feeds to KWVA. Bands could be staged at the pub for late night hours.

KWVA needs a dedicated space for a newsroom.

A long narrow layout is not ideal. Ideally the equipment is at the core and all other uses surround the core.

Charlotte recommends this book: “A Face for Radio”.

Tuesday, Oct. 4, 2011

Dr. Robin H. Holmes
Vice President for Student Affairs
University of Oregon

We believe the new EMU must have a Student Media Center if the University of Oregon is to become the preeminent residential university.

Long ago, the media industry began erasing the lines between print, radio and TV. Other large universities have built or are planning similar centers, including Oregon State University, University of Mississippi and Virginia Commonwealth University.

Media is at the center of student life in the digital age. Students consume news and information without regard to the media platform. This center would cluster student groups representing all media forms into a single space. KWVA and the Oregon Daily Emerald would be the anchors. An independent video facility could be a third primary tenant. Other student media, such as the Commentator and Oregon Voice, would have space, support and resources. Ideally, the center will have a storefront where the KWVA studio and Emerald newsroom are visible to passing students. Headlines, interactive media and even live shows could be on display. Smaller audio and video studios could be available for all students.

The Student Media Center will provide students with an independent learning environment and hands-on experience to launch their careers. It will be the laboratory where students find inspiration to become industry leaders, much like Paul Brainerd or Carolyn Chambers. We believe this concept could be a strong fundraising candidate among foundations and successful UO alums. Both the Emerald and KWVA will help raise money.

We realize there are dozens more details to sort through. But we are deeply passionate about the concept and are committed to playing a leading role in making it happen.

Thank you for your time.



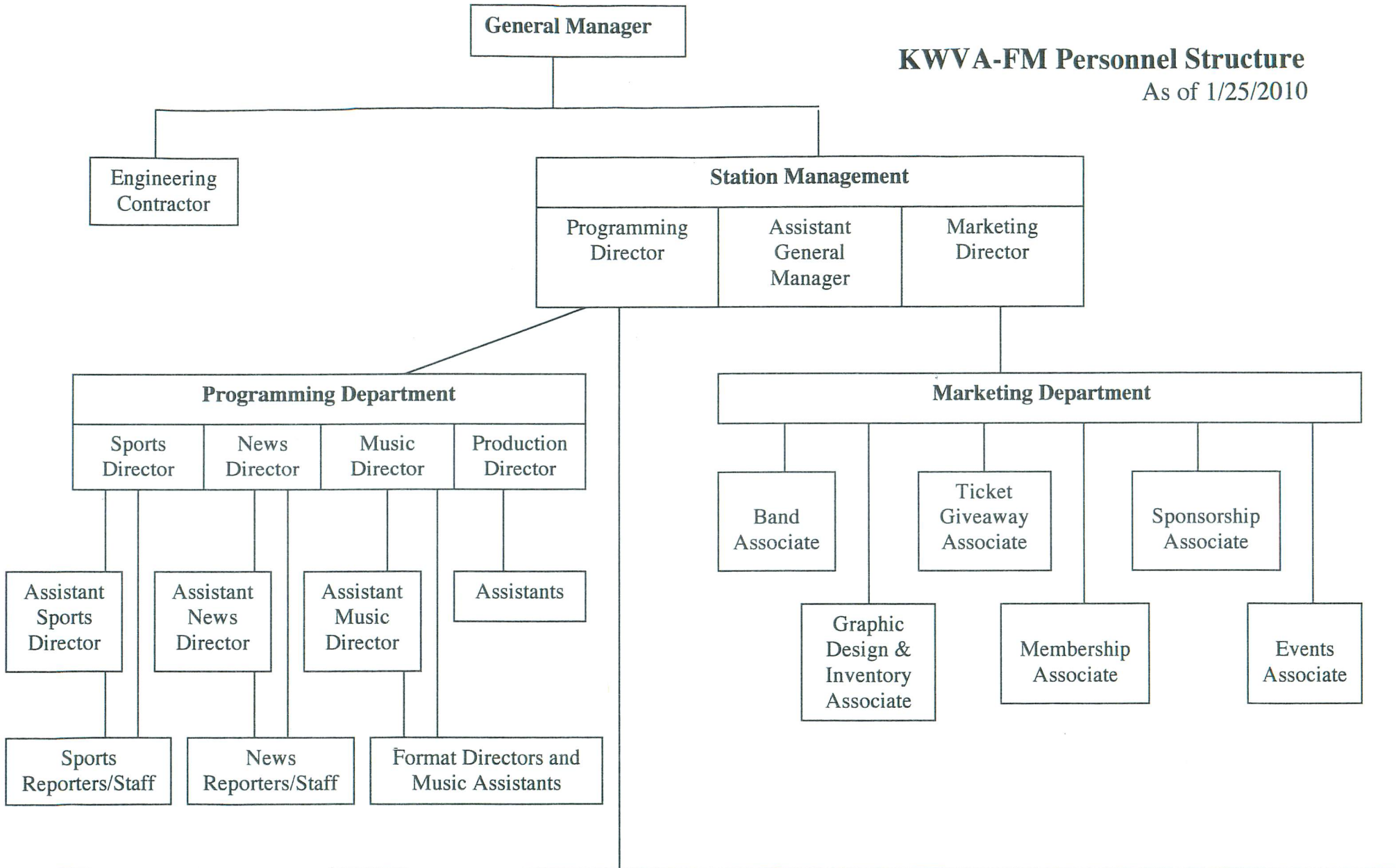
Charlotte Nisser, J.D., M.A.
General Manager
KWVA, Campus Radio



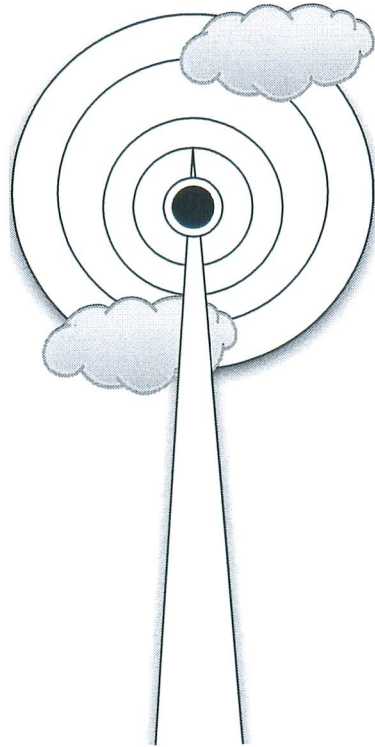
Ryan M. Frank
Publisher
Oregon Daily Emerald

KWVA-FM Personnel Structure

As of 1/25/2010



DJs		
150 + Volunteers trained and capable of DJing	112 DJs on schedule this week	168 hours/week live on-air time
98 different on-air shows	92 of 112 are students (82%)	1 hour/week average prep time per DJ (112 hours/week)
45 new DJs trained Fall Term	20 of 112 are non-student (18%)	6 hour average/person/month off-air volunteer time
		192 hours average/person/year contributed



Project Title:

KWVA-FM Integrated Broadcast Suite

Project Summary:

Currently located in an old men's restroom, old women's restroom and a janitorial service area, KWVA-FM, the University of Oregon's campus radio station, is desperately in need of space renovation. If there is a future for students interested in broadcasting at the University of Oregon, funding this project is the way to ensure it.

FUNCTIONAL DEVELOPMENT

- Conference Room & Student Staff workroom
- Live Performance Studio
- Additional Live Broadcast Studio (Studio A)
- Additional Production Studio (Studio D)
- Equipment Repair & Engineering Room
- Collaborative Space & Reception area
- Music Library
- Music Processing Office & Digitizing station
- Open visual environment

Facilities Gained

- Secure work area for student staff
- Private conference room
- 725% increase in music library space
- Secure music processing office for logging all music mail received
- Secure Digitizing Station for digital music library development
- Versatility in live broadcast studio and production studio space
- Increased flexibility between live broadcast programs
- Ability to train new volunteers during normal daytime hours
- Ability to produce a professional live broadcast show without interruption by other volunteers
- Increased student access to production facilities
- Ability to host guests and performers in a comfortable setting
- Ability to host live performances in a studio designed and dedicated for that purpose
- Dedicated room for equipment repair and maintenance
- Dedicated, secure and easily accessible room for engineering equipment
- Ability for students, volunteers, staff and GM to work collaboratively within the KWVA suite
- Open and inviting reception area for volunteers and guests
- Visual representation for passers-by of broadcast environment via glass walls, including view of live performances

Functionality Gained

SPECIAL FEATURES

Architectural Strategies

- Regional Materials and Recycled content
- Low Emitting materials
- Improved Indoor Air Quality
- Improved Indoor Sound Quality

Lighting

- Utilization of high efficiency lighting fixtures
- Installation of occupancy sensors in all rooms
- Spot lighting for reduced or targeted lighting needs

Power

- Utilization of high efficiency transformers and circuits
- Evaluation of load requirements
- In-wall electrical wiring
- Flush-mount outlets
- High capacity generator for short or long-term back-up
- Exploration of solar options

HVAC

- Utilization of variable air volume systems to reduce fan energy usage
- Airflow reduction in unoccupied spaces
- Utilization of high efficiency chilled water system
- Utilization of non-global warming/non-ozone depleting refrigerants
- High level of controllability for occupants and equipment performance

Specialized Broadcast Elements

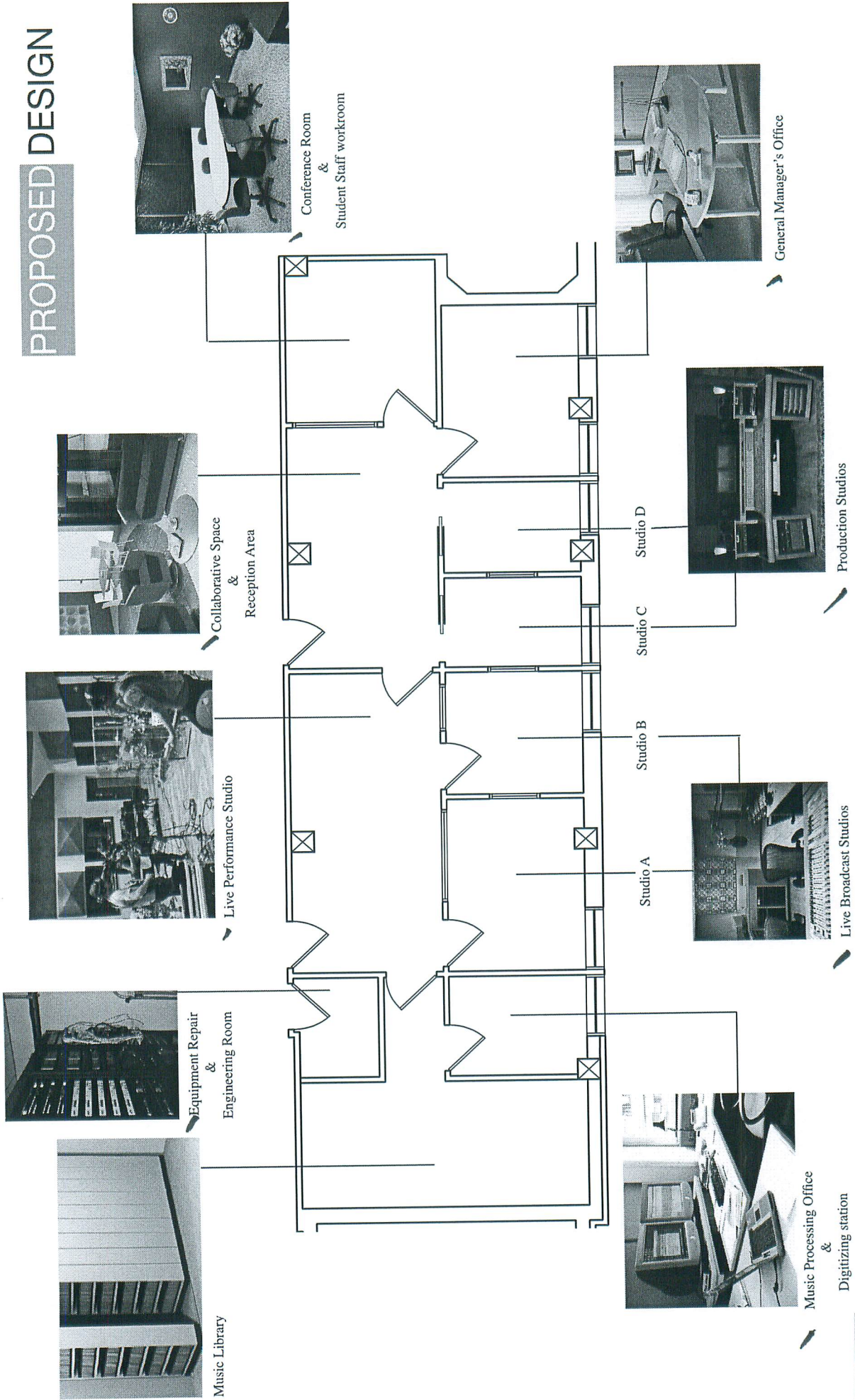
- Sound sensitive HVAC installation
- Sound sensitive lighting installation
- No-touch double wall insulation system
- Acoustical sound material installation
- Broadcast cable runs

Other Built-in Fixtures

- High Capacity CD music storage
- Studio interconnection
- High rated glass walls in Conference Room, Collaborative Space, and Live Performance Studio
- Studio tables and equipment racks

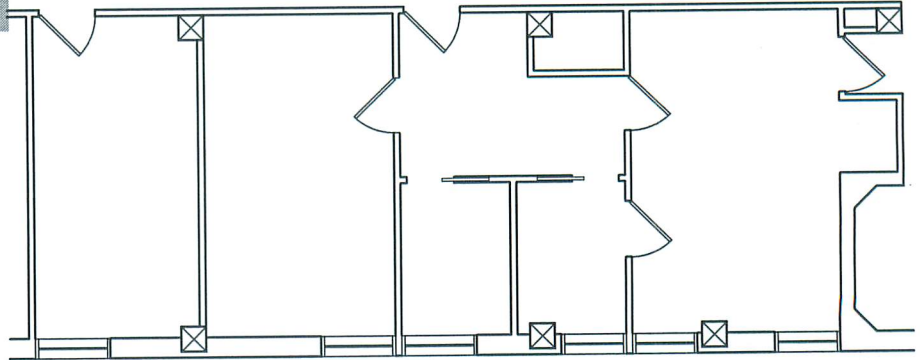


PROPOSED DESIGN

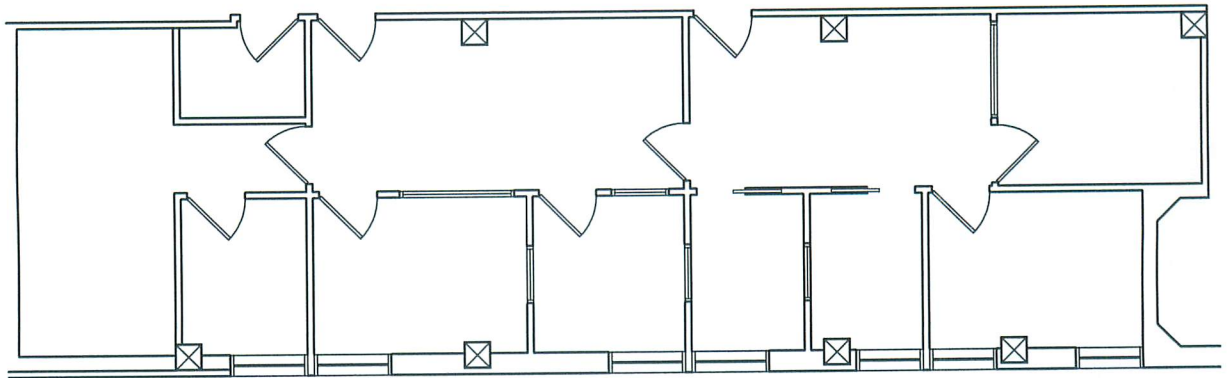


NOW THEN

Transform this...



Into this...



And get all this...

- Collaborative Space & Reception area
- Conference Room & Student Staff workroom
- Live Performance Studio
- 2 Live Broadcast Studios
- 2 Production Studios
- Equipment Repair & Engineering Room
- Music Library
- Music Processing Office & Digitizing station
- General Manager's Office
- Open visual environment