

Project Number 11045
Purpose Subject Area Committee Meetings – Outdoor Program
Location EMU – Fir Room
Start Time 10:15 AM

CONFERENCE REPORT

01 THOSE PRESENT

Outdoor Program

Dan Geiger, Rithy Khut, Briawa Orr, Suzanne Hanlon

University of Oregon, Campus Planning and Real Estate

Martina Bill

University of Oregon, Student Affairs

Gregg M. Lobisser

EMU User Group

Wendy Polhemus, Mandy Chong, Dana Johnston

EMU

Jessi Steward

SERA Architects

Natasha Koiv, Audrey Craig

AC Martin

Bob Murrin, Tammy Jow, Christopher King

02 MISSION

The mission of the Outdoor Program is to provide for the cultural and physical development of students in a wide range of outdoor pursuits and environmental settings. Our "Common Adventure" philosophical format is summed up with these words: egalitarian, experiential, low-cost, non-competitive, non-discriminatory, self-propelled, consensus, minimal environmental impact, and participant-initiated and open-ended. The OP does not offer "trip packages" to students, rather it empowers and aids s...

Mission Statement for the Bike Program:

With a central, dedicated facility, we seek to double UO bike mode share from 17% to 34% by 2020, and in so doing we will improve access to campus by all modes of transportation, create a more livable campus environment, improve access to bicycles and bicycling resources for all students, especially those who are underrepresented socio-economically, invest student fees in the most socially responsible and economical manner.

03 ORGANIZATIONAL STRUCTURE

Org chart required.

04 HOURS OF OPERATION

9-6 office, 8am -11pm Resource Center

Bike Program: 9 am – 5pm, evening classes

05 FREQUENCY OF USE

8 am – 10 am, Monday through Friday, there are 12 non-staff visitors.
10 am – 12 pm, Monday through Friday, there are 16 non-staff visitors.
12 pm – 9 pm, Monday through Friday, there are generally 25 non-staff visitors.
9 pm – 11 pm, Monday through Friday, there are 8-10 non-staff visitors.

Visitors on Saturdays and Sundays range from 2 – 8.

The Bike Program will have 10-25 visitors throughout the day.

06 STAFFING AND WORKSTATION REQUIREMENTS

1 Full-time Coordinator with a dedicated private office.
1 Full-time Assistant Coordinator with a dedicated private office.
1 Part-time Office Manager with a dedicated open workstation.
10 Part-time Student Staff with shared open workstations.
15 Part-time Volunteers with shared open workstations.

Bike Program

1 Full-time Bike Program Coordinator – Proposed with a dedicated private office.
10 Part-time Bike Program Staff with an open workstation
2 Part-time Class Instructors with a shared open workstation.

07 TYPES OF SPACES REQUIRED

A reception/waiting area is required with a reception desk or counter with 2 customer service stations.

A conference room is required that seats 25 people. It is not dedicated or enclosed, but part of the lounge/resource center space for pre-trip, staff meetings, small clinics.

A dedicated work area is required with a meeting/work table for 6.

Shared storage is required at 250 SF to store:

- Various retail items
- A/V
- Office and marketing supplies
- Dolly
- TV on wheels

Other space needs not previously described include:

Part of lounge/conference needs resource information space, ie guidebooks, maps, etc.

Bike Program

A waiting area is required that seats 2 people. The lobby should be big enough for bikes and people.

A shared lounge/meeting/resource space with the Outdoor Program to seat 20 people is required.

A shared work area for 4 people is required. This is a staff bike repair station.

Dedicated storage is required at 450 SF.

Other space needs not previously described include:

- 6 do-it-yourself work stations
- Bike parking
- Retail space

08 ADJACENCY REQUIREMENTS

The Outdoor Program should be directly adjacent to the Craft Center and Club Sports.

The Outdoor Program should be on the same floor as the Leadership Center and Cultural Forum.

The Bike Program should be directly adjacent to: Retail Space, Craft Center, Club Sports and the Outdoor Program.

The Bike Program should be on the same floor with: Cultural Forum.

09 VISIBILITY, ACCESS, AND SECURITY

The Outdoor Program should be located near the front door (8 of 10).

Locking doors at all entrances are required so that the Outdoor Program can be closed even if other parts of the building are open.

The Outdoor Program is a “user” of a larger computer network where the system is operated by another department.

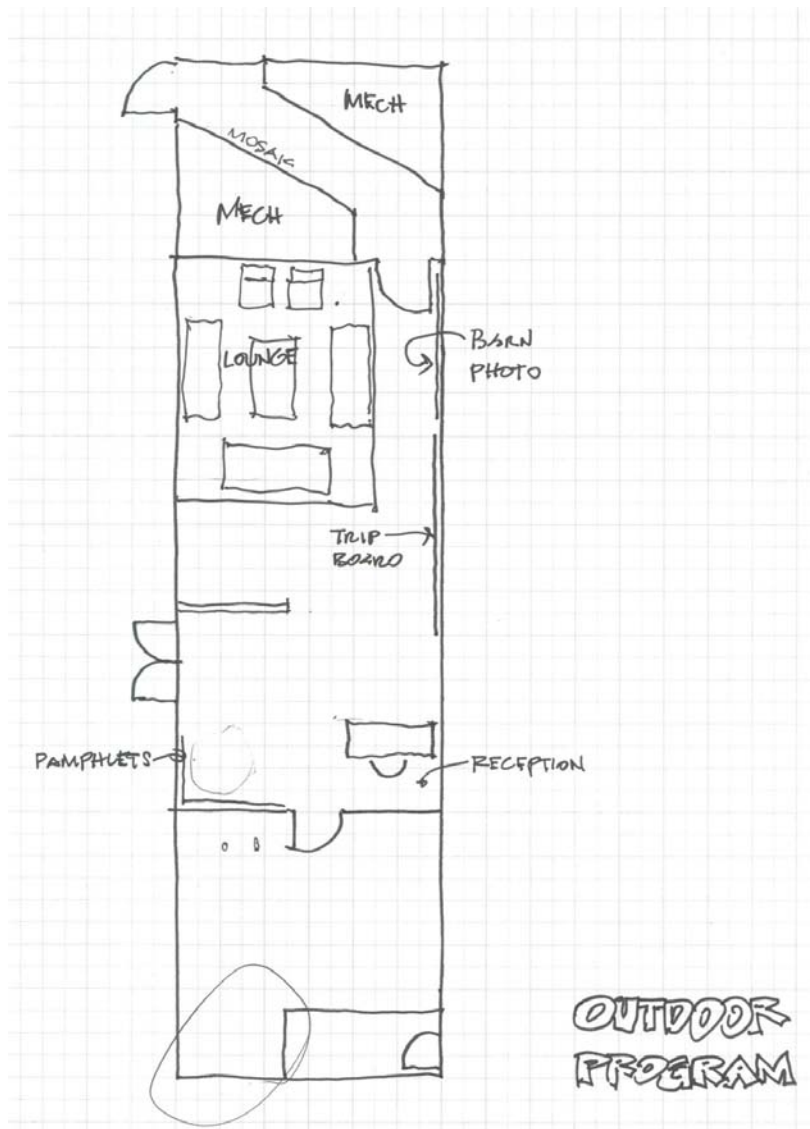
The Bike Program is neither “visible” nor “less visible” (5 of 10).

The Bike Program requires locking doors so it can be closed even if other parts of the building are open.

The Bike Program is a “user” of a larger computer network where the system is operated by another department.

10 OUTDOOR PROGRAM SKETCHES AND NOTES

Existing Plan



Notes

The Outdoor Program was started in 1966, one of the first in this country. It reflects the philosophy and culture of the EMU cooperative outdoor program.

Its five main branches include:

1. Gear Rentals – revenue generating, open to campus and community
2. Bike Program – started in 2008 as an idea for a bike center, do it yourself bike shop in the corner of the Outdoor Barn.
3. Trips
4. Resource Center
5. Programming Events – working with the Cultural Forum and Craft Center.

Trips are planned at the EMU. Trips are launched at the Barn.

At the EMU, the Wilderness Resource Center includes:

1. Information center, maps, guidebooks, other resources
2. Pre trip meeting space; includes a variety of presentations, interpretive clinics, mushroom identifications, safety clinics, open houses, seats 40-60 people.

There are 150-175 outings a year. Students are asked what they want to do. Staff helps students plan own adventures. Trips can be posted on the Wilderness Board.

The Outdoor Program works closely with Admissions to bring student to the University. At recruiting events, recruiters are looking for kids with bike helmets and ski jackets. It ties into campus life.

The Bike Program showcases a bike friendly university. Its visibility at a location in the EMU will help students find where to register bikes, etc. Students can drop-off their bikes for maintenance service, go to class, bike is repaired while at class and ready for pick-up after class.

A floor plan of the Bike Program at Portland State University was presented.

The Bike Program celebrates the bike parking requirement and turns it into something better.

The Bike Program can stand alone or be grouped with the Outdoor Program.

It requires exterior access with doors that allow bikes and people to move through.

The Bike Program may be a candidate for the unassigned retail piece of the program.

Considering the bike transportation patterns on campus, it would be good to locate the Bike Program off the bike path.

Bike Program adjacencies include: Cultural Forum, Club Sports, Multi-cultural Center, Sustainability Center.

EMU Bike Center

Executive Summary Proposal
Prepared by Briana Orr, Project Coordinator

EMU Bike Center will be a world-class facility to provide access to **bicycles, maintenance services, educational programming, transportation and recreation resources** to the entire University of Oregon community. The EMU renovation will require an addition of hundreds of bike parking spaces. Out of this requirement, we can create an exceptional facility that will showcase our commitment to sustainability, equality and a healthy campus. EMU Bike Center seeks financial support from incidental fees. By integrating identified revenue streams, the program seeks to reduce impact on incidental fees and ultimately decrease students' out-of-pocket expenditures for transportation.

Mission Statement

With a central, dedicated facility, we seek to **double UO bike mode share from 17% to 34% by 2020**, and in so doing we will:

- improve access to campus by all modes of transportation
- create a more livable campus environment
- improve access to bicycles and bicycling resources for all students, especially those who are underrepresented socio-economically
- invest student fees in the most socially responsible and economical manner
- decrease students' out-of-pocket expenses to attend college
- improve student and staff health, reduce health care costs and relieve stress
- maintain leadership in innovative bicycle infrastructure and encouragement programming

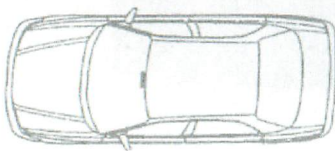
Programming Features

Proposed Additions

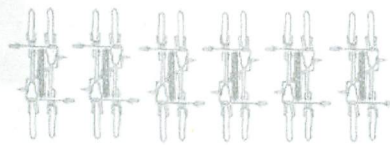
- Expanded day rental fleet
- Conference, department, and special event bike loans
- Auction or sell refurbished bicycles impounded by DPS
- Limited retail
- Drop-off fee-based maintenance service
- Expanded DIY workshop hours
- Expanded class and event offerings
- Centralized Resources



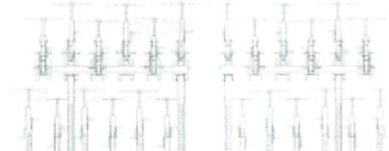
Consider this parking space trade-off:



1 car

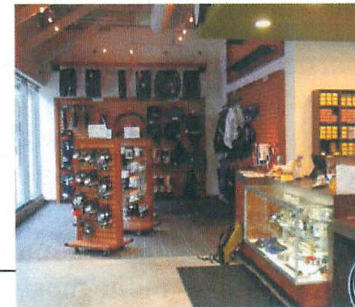
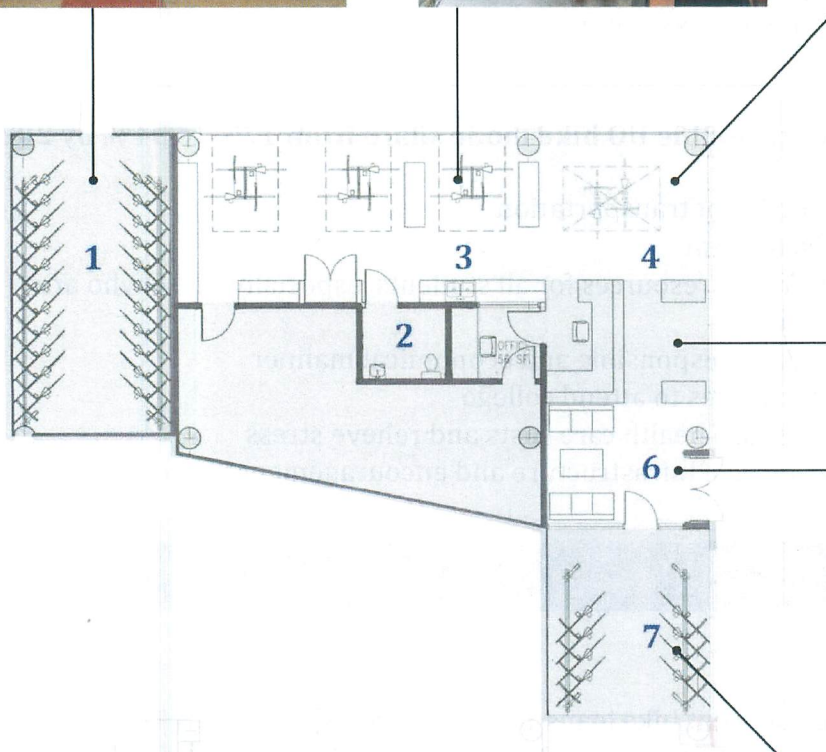


12 bikes



24 bikes

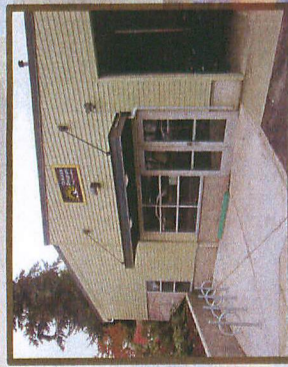
Facility Features



1. Secure, indoor parking for 200 bikes
2. Showers and lockers
3. Staff maintenance space
4. DIY maintenance space
5. Retail space with customer service desk
6. Shared meeting and resource space
7. Rental bike storage



OUTDOOR PROGRAM BARN



BIKES TRIPS GEAR