

USER GROUP

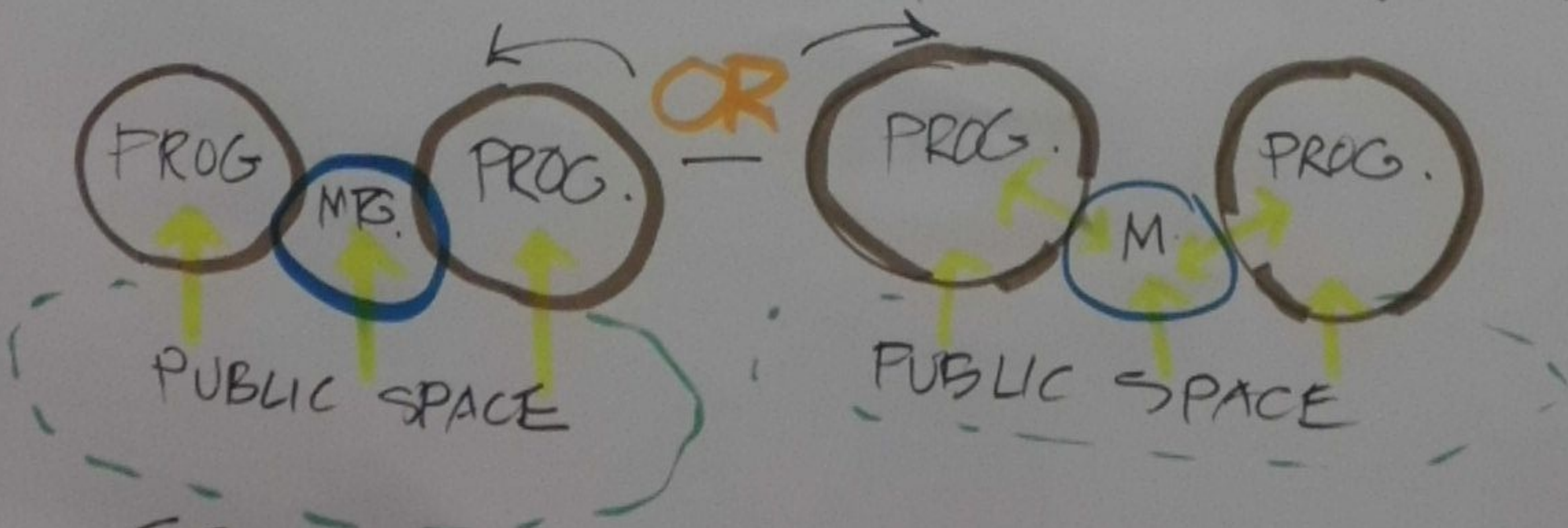
PROXIMITIES & AFFINITIES

- * ADD "LATE NIGHT" GROUPING OR LAYER
- * ADJUST MCC/HEART RELATIONSHIP?
NOT FISHBOWL VS. NEEDS PRESENCE
- * DOWNPLAY LOCATION IN REAL SPACE
REMOVE "13TH AVE" LABEL
GENERALE STREET RELATIONSHIPS

SPACE PLANNING CONCEPTS

* SPACE STANDARDS

* SHARED MEETING/CONFERENCE ROOMS



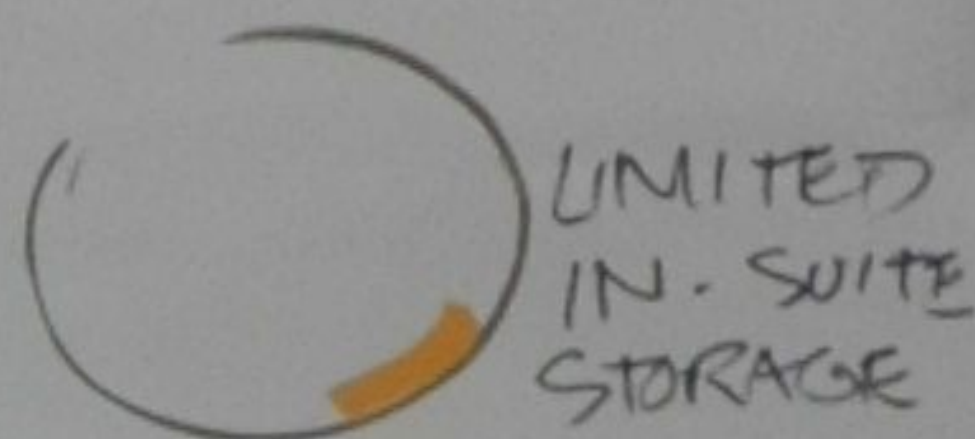
SPECIFIC MEETING ROOMS VS. ALCOVES
IN PUBLIC SPACES AND/OR IN SUITES

USER GROUP

(2)

NATURE OF SPACE TYPES

MEETING
INFORMAL WORK/MEET
STORE - NEARBY STORAGE
REMOTE STORAGE

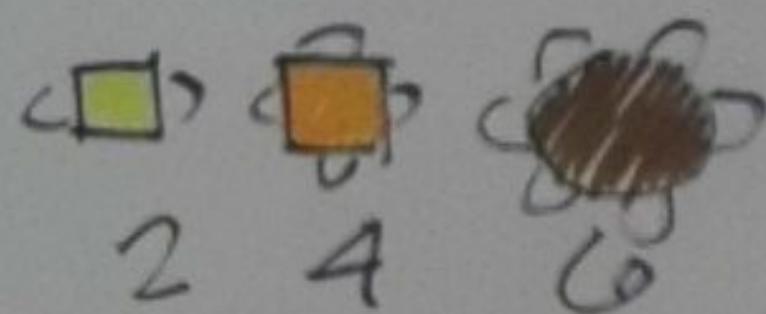


FOOD SERVICE

ADD VENDOR - NATIONAL BRAND?
NEED? OR USE PUB AS ADDITIONAL VENDOR?
CONSULTANT: TOO MANY SEATS?
HIGHER UTILIZATION W/ TWO TOPS
VS. FOUR/SIX TOPS?

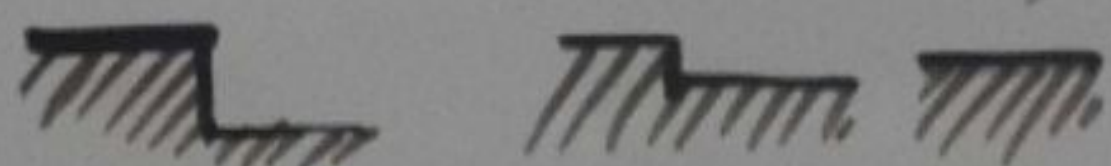
GOAL: ENCOURAGE MULTIPLE USES

PLENTIFUL REMOTE STORAGE "CAGES"



LOADING DOCK

NEED TO BE USEFUL FOR MULTIPLE TRUCK HEIGHTS



CONVENIENCE STORE

LATE HOURS, ADD FOOD?

CONCERT FOOD

VENDORS - PUB, FISHBOWL, COFFEEHOUSE, CONV. STORE
ALL SELF-OPERATED (EMU)
OTHER FOOD VENDORS OUTSIDE
BOOKSTORE

CARD OFFICE

USER GROUP ③

QUEUING & AT OTHER PROGS.
WITH OCCASIONAL SPACE NEEDS
USE PUBLIC SPACE -

COMPUTING



EMBEDDED EVERYWHERE
PLUS SMALLER CENTER
FOR CUTTING EDGE
GEAR
- FOR ADVANCE COLLABORATION

BIKE CENTER

SECURE STORAGE
MAINT. BY USERS
SALE OF PARTS
BIKE LOAN PROGRAM

CONFERENCE - NEEDS VALIDATION/CONFIRMATION

THEATER/AUDITORIUM - VERY MULTI-USE

CONCERT HALL

ORCHESTRA PIT - COST IMPLICATIONS
DANCE PERFORMANCE - COST IMPLICATIONS
SPEAKERS & ACOUSTICS

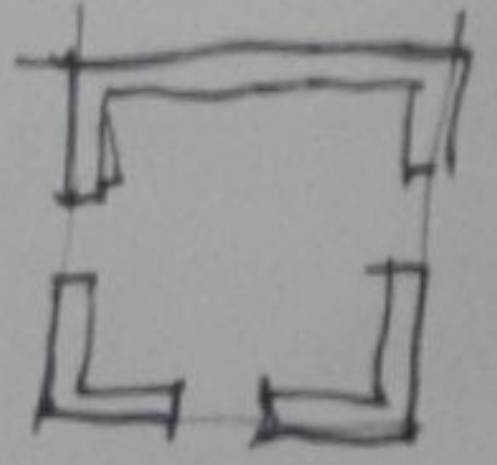
SPECIFIC MEETING ROOMS VS. COMMONS
IN PUBLIC SPACES AND/OR IN SUITES

USER GROUP

④

CONCEPTS

COLLEGIATE HISTORY - OXFORD



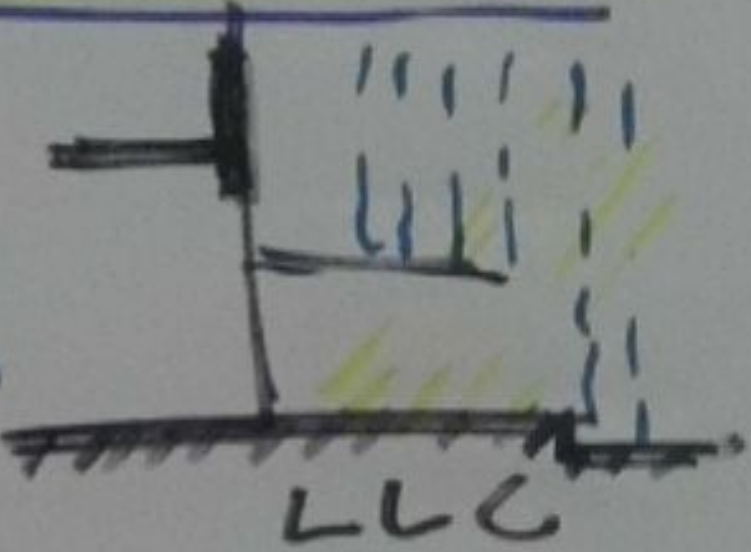
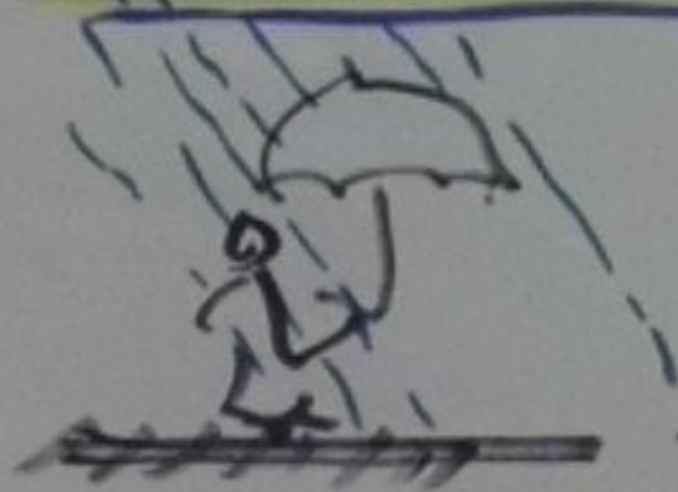
EUROPEAN PED. PLAZAS: NO FIXED OBJECTS

EYES ON THE STREET - J. JACOBS

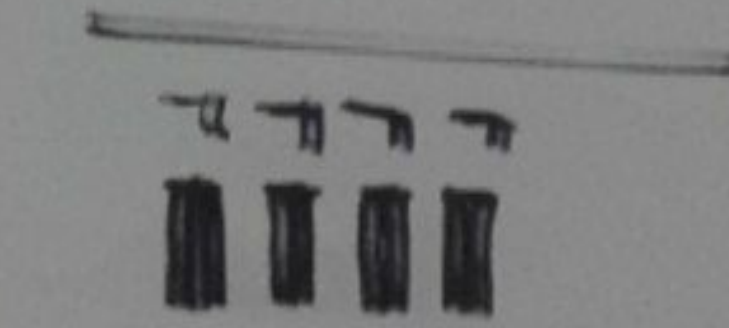
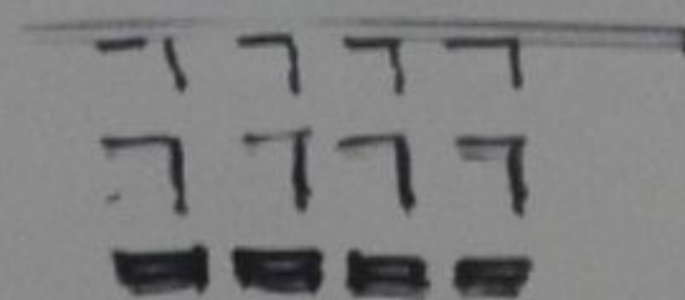
NEED FOR HUMAN SUPPORT: FURNITURE

W. WHYTE

CLIMATE RESPONSE



HEIGHT OF CONNECTION

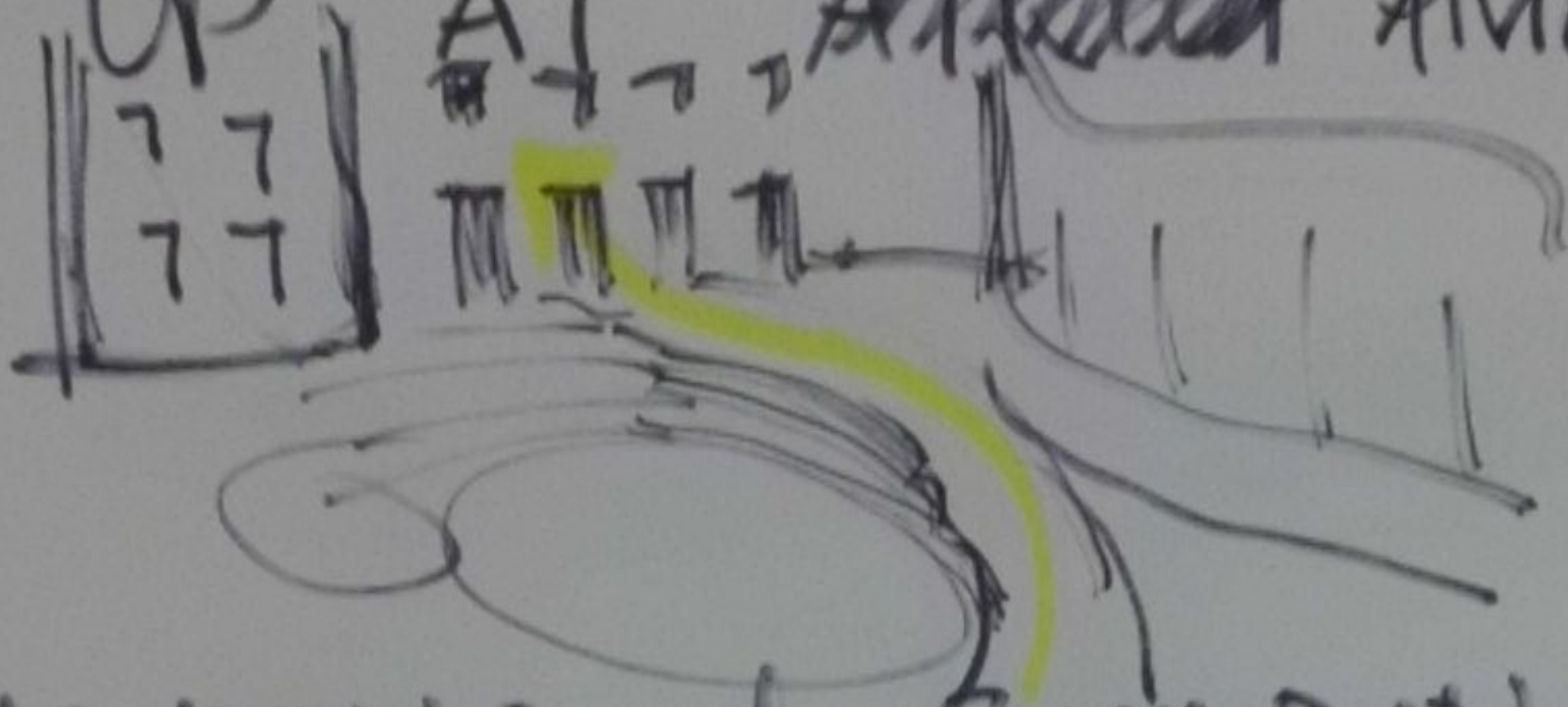


OR NO ~~CON~~ BUILDING - ALL OPENING

SOUTH FACE & SOLAR - GERLINGER
SUNPORCH

USE OF LOCAL MATERIAL

RAMP UP AT ~~ATRIUM~~ AMPHITHEATER

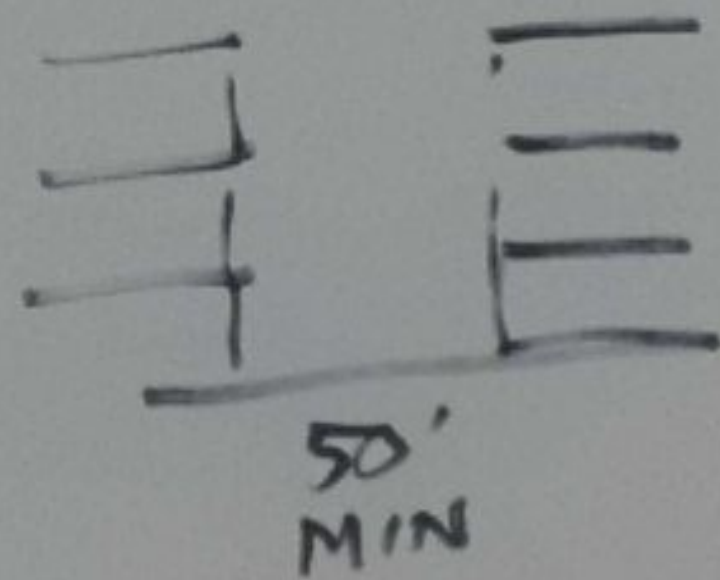
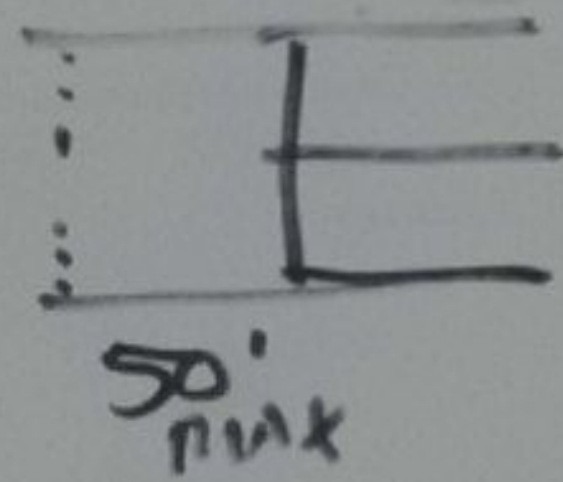


DAYLIGHTING & BUILDING DEPTH

GENERALLY 60' MAX

SINGLE SIDED ATRIUM

±50' MAX



ENTE
MPLE

CONCERT HALL - Location 1

- CONNECTION TO TRANSIT BETTER
- Pro's - LOBBY SHARED
- CONNECTION BETTER TO LARGER STUDENT CENTER

SCALE DROPS
TOWARDS HEART
OF CAMPUS

- CLEARLY DEFINES ACTIVITY ^{UP} "FUNNEL"
- OPTION FOR OUTDOOR MOVIE
- DOESN'T IMPACT LOADING DOCK
- CONNECTION BETTER TO SUPPORT LATE NIGHT ACTIVITY (WITH ATHLETIC NATURAL CENTER)

CONS

- EASIER TO DEPRESS PD TO GRADE.
- LOCATION OF STAGE SHARPER
- OPPORTUNITY FOR OUTER PROGRAM.

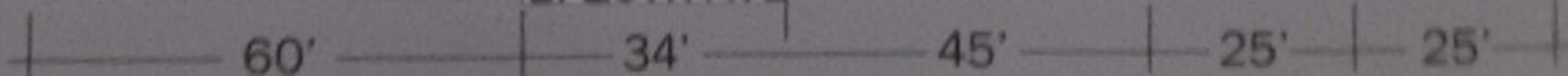
CONS

LOBBY SHARED - STUDENTS AFFECTED BY NOISE

- ? WHERE IS THE ENTRY?
- ? WHAT IS ARRIVAL SEQUENCE?
- ? WHERE IS LOADING?
- ? IS MOON TREE SAFE?

EXISTING
ERB MEMORIAL UNION

E. 13TH AVE



CONCRETE HALL - LOCATION 2

PRO'S

- ENTRY COULD BE SEPARATE OFF UNIVERSITY
- GIVING BACK GREEN SPACE
- BETTER FOR ACCESSIBILITY - CLOSER TO PARKING.
- SEPARATE FROM STUDENT SPACE, SPACES ARE CULTURALLY DIFFERENT

CONS

- CONCERT HALL OUT OF STUDENT ACTIVITY
- LOBBY DUPLICATED
- SERVICE?
- CONNECTION BETTER TO SUPPORT LATE NIGHT ACTIVITY.

? LOBBY FOR ARRIVAL / INTERMISSION?

