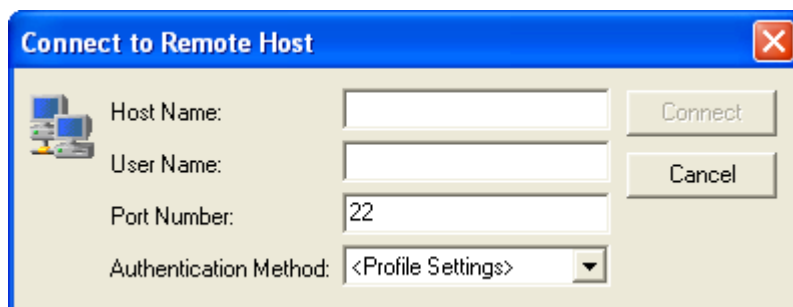
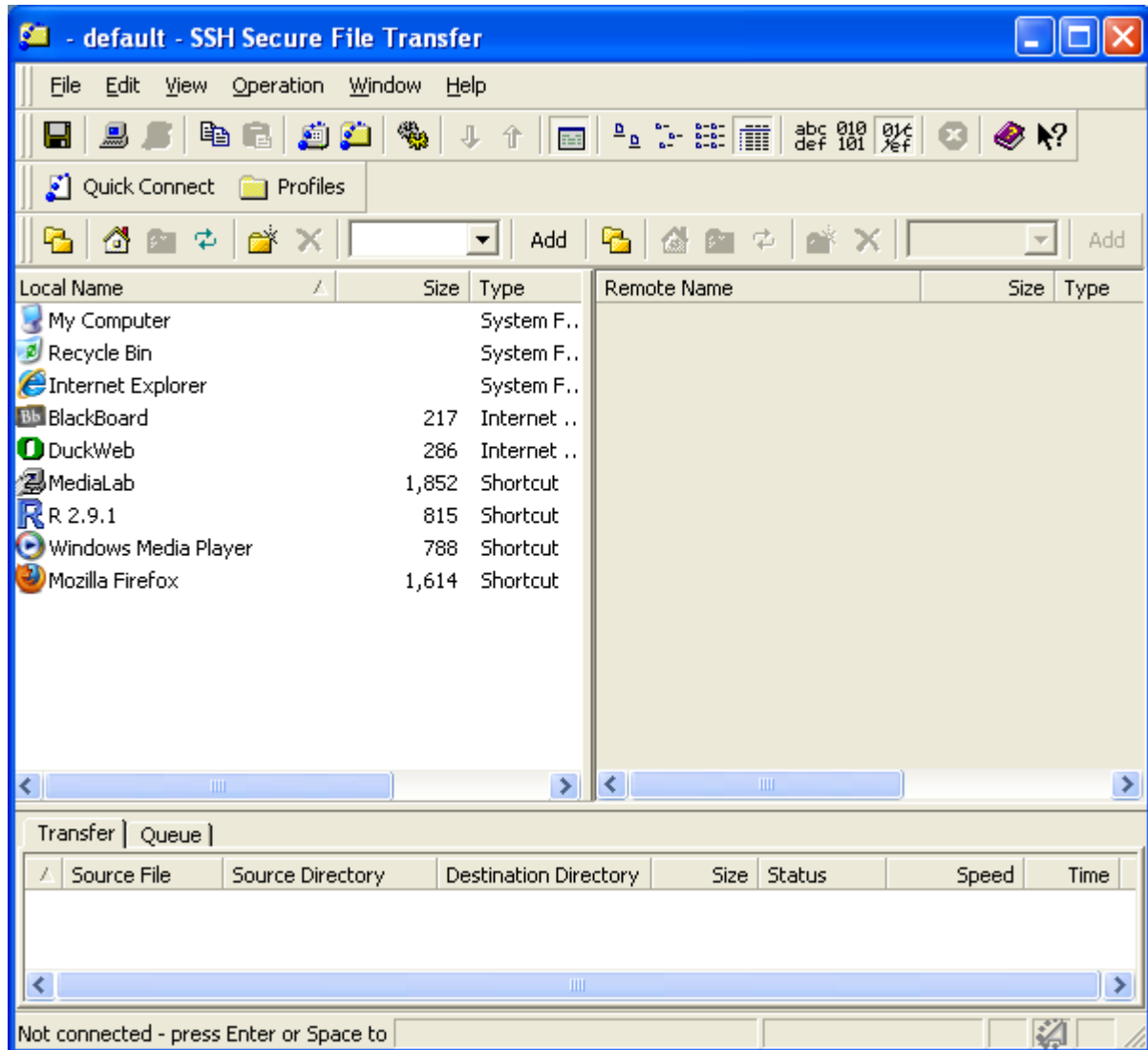
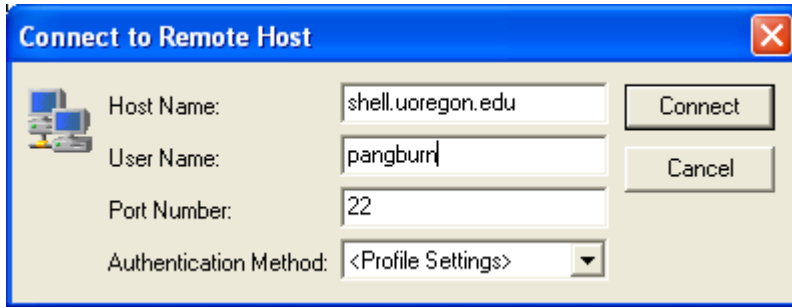


Now let's look at the SSH Secure File Transfer program under the "SSH Secure Shell" Start Menu program group.

Start the application and click Quick Connect.

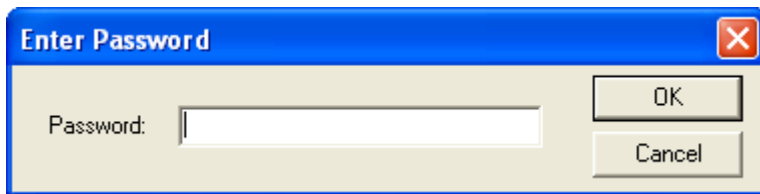


Again, enter the server name and your username.



The "Connect to Remote Host" dialog box has a blue title bar with a close button. It contains four input fields: "Host Name" with the text "shell.uoregon.edu", "User Name" with "pangburn", "Port Number" with "22", and "Authentication Method" with a dropdown menu showing "<Profile Settings>". To the right of the fields are two buttons: "Connect" and "Cancel".

Click Connect and enter your Uoregon password.



The "Enter Password" dialog box has a blue title bar with a close button. It features a "Password:" label followed by an empty text input field. To the right of the input field are two buttons: "OK" and "Cancel".

Now you see a window showing your local computer's file on the left, and the remote server at the right.

