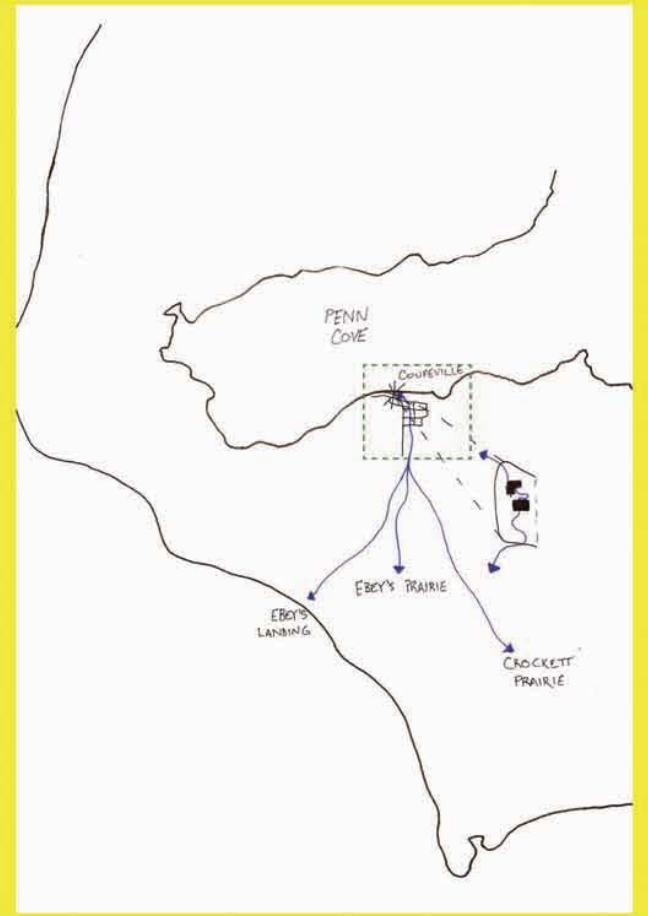
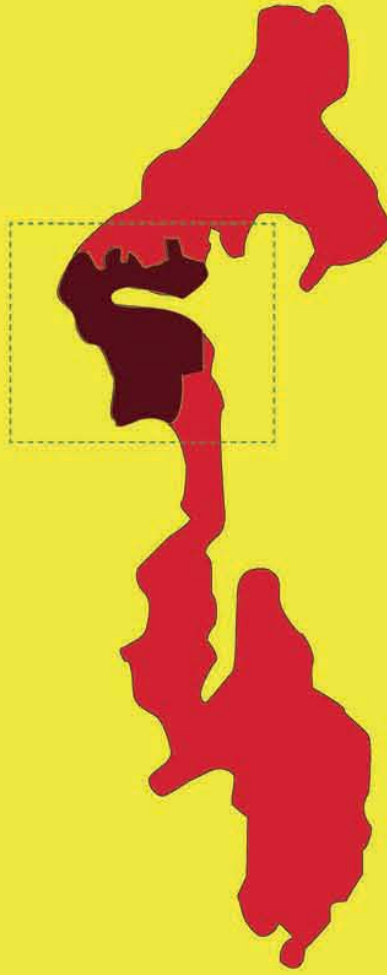
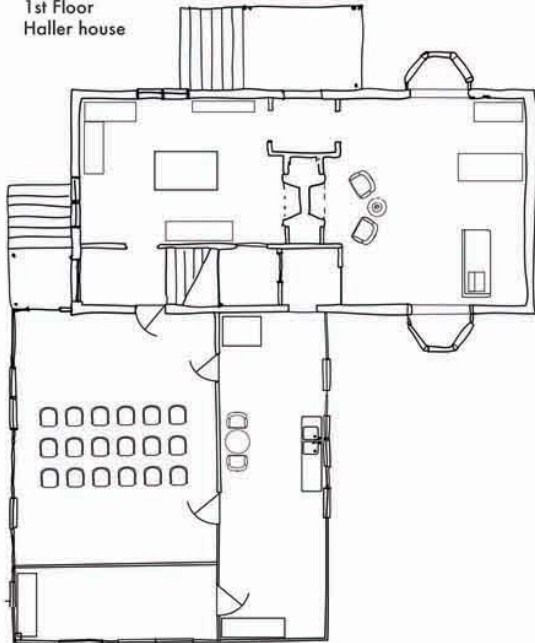


Ebey's Landing National Historic Landmark

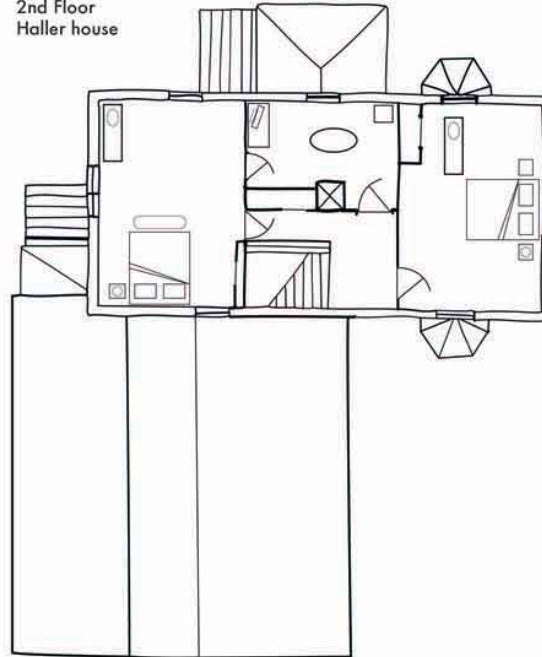
Jesse James Crupper
University of Oregon
Arch 584 Peter Keyes
Fall 2009



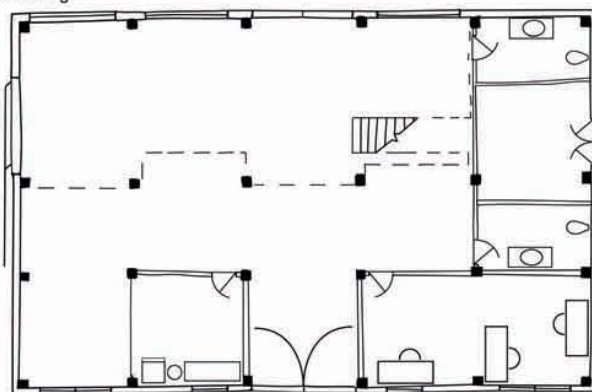
1st Floor
Haller house



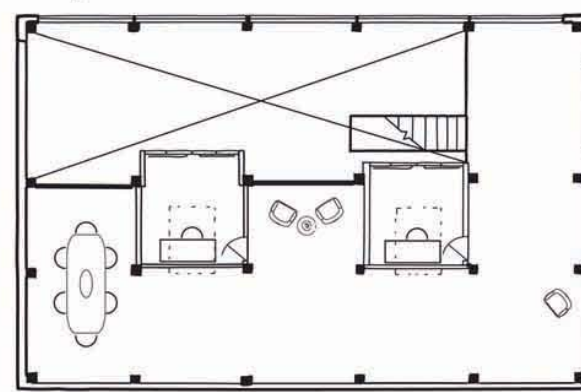
2nd Floor
Haller house



1st Floor
Outbuilding



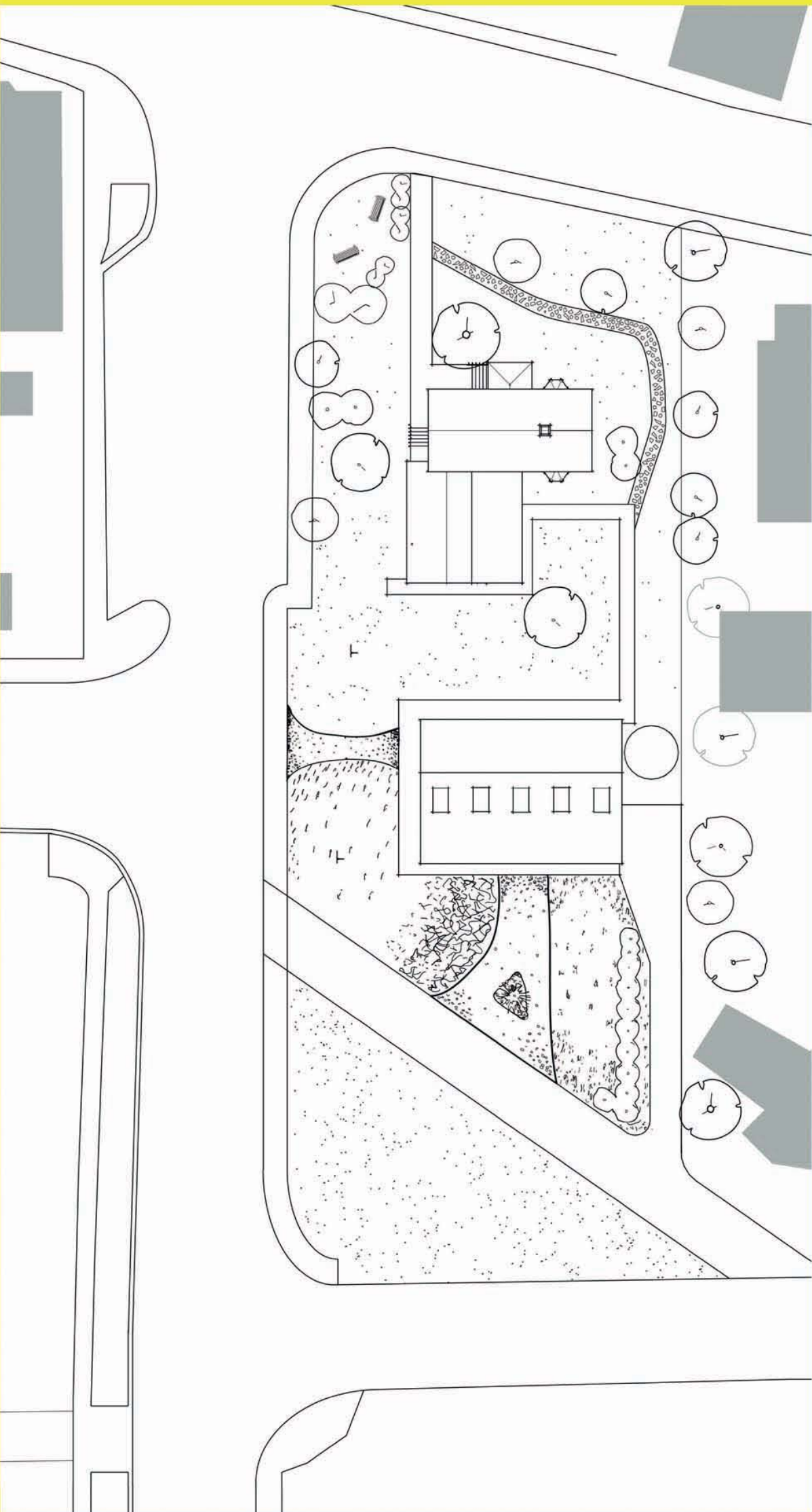
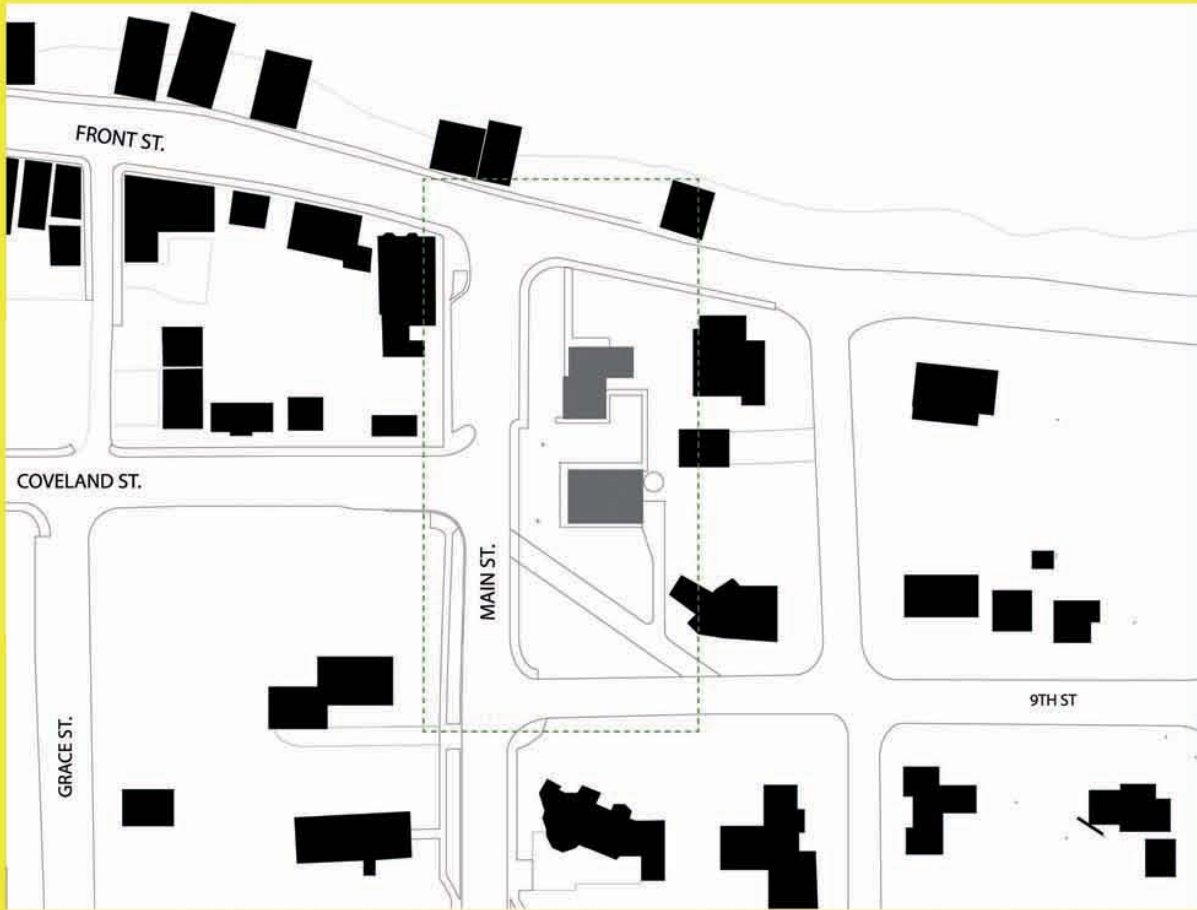
2nd Floor
Outbuilding



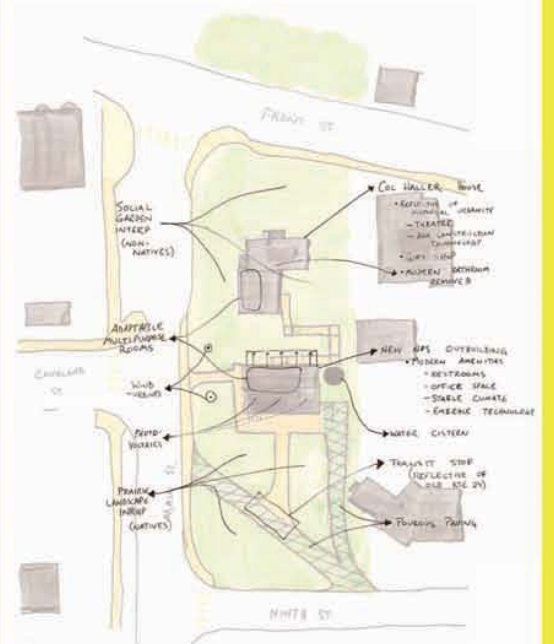
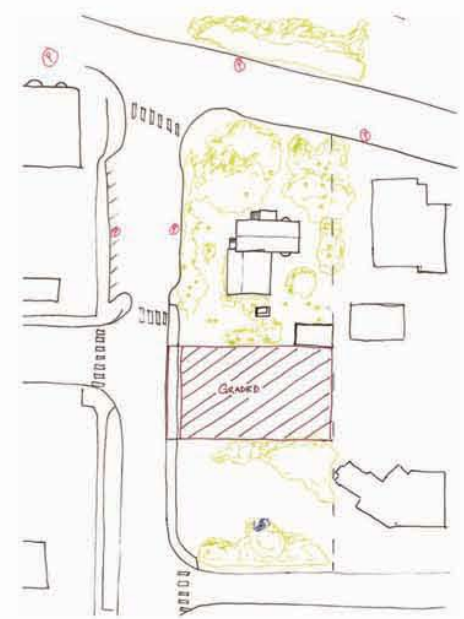
The Colonel Granville Haller House:



The Col. Granville Haller House acts as a gateway between the prairie and urban life on Whidbey Island. A new outbuilding represents and interprets the prairie, while the house itself suggests the historical urban lifestyle. This outbuilding also suggests that while Coupeville has a rich past, it still embraces its promising future. The site strives to give visitors a deeper understanding of the Historic National Landscape that it serves, and residents a place for enjoying the landscape that they call home.



Existing Condition



Accessibility

