

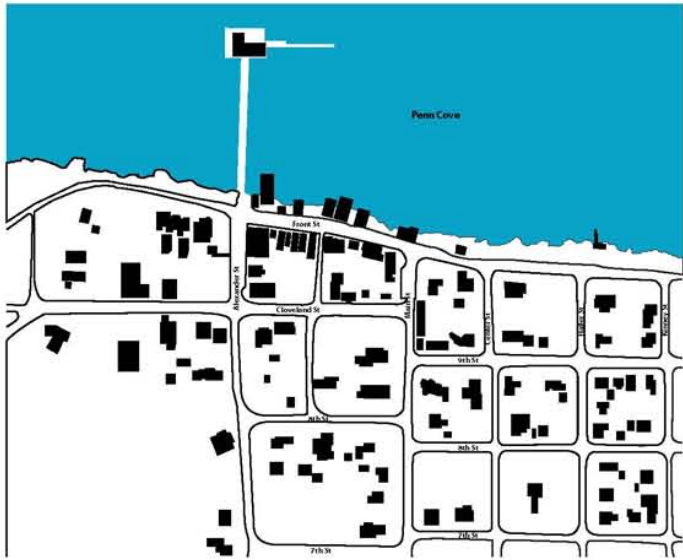
Intermediate Spacing



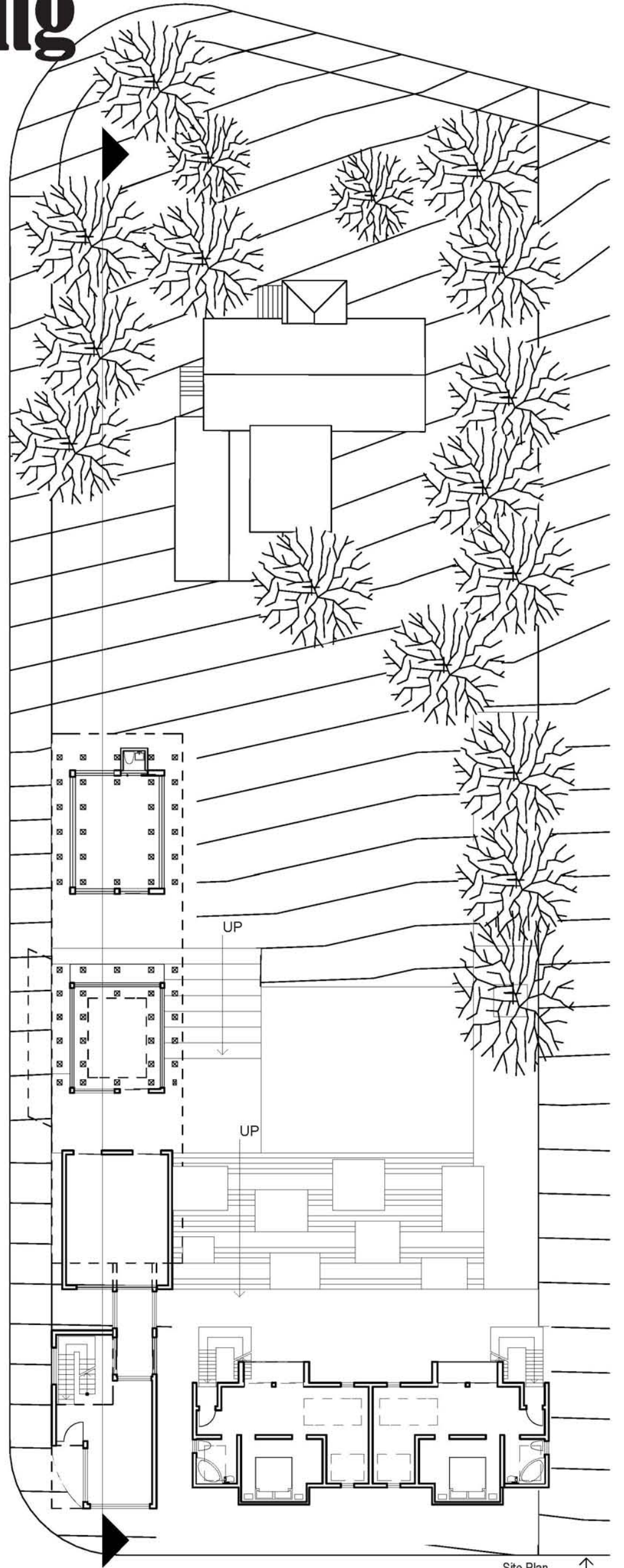
Visitor's Center
Ebey's Landing Historic Reserve

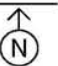
The town at Ebey's landing in Whidbey Island, Washington is situated along side Penn Cove and a beautiful steep topography. The town that has been influenced by many different styles of Architecture and has no true identity in that sense. Through out the years the town has created it own patterns in the blocks and in the buildings.

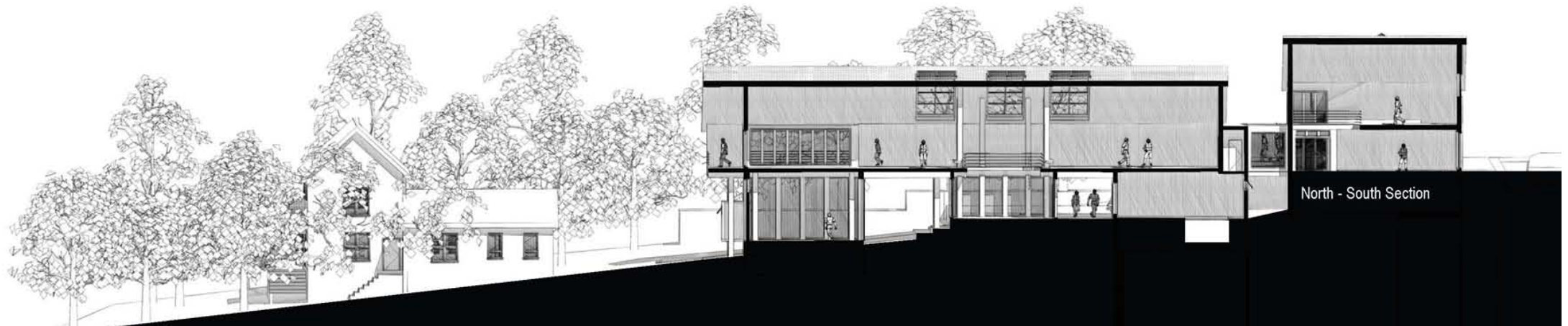
Park Services in Whidbey Island needs a visitor center and office spaces. They want to restore and reuse the historic Haller house, a home built in the 1860's by the first settler in town. Because of the problems that arise in reusing a historic building such as losing its integrity and the cost that accompanies trying to adapt to modern times, the lot directly behind the Haller house arose as one of the primary solutions to keep the Haller house in its original state and also provide a more lively visitor's center. A center that not only attracts tourists but becomes a enjoyable urban setting and plays a pivotal role in connecting the wharf and downtown area with the heart of the town.



Main St heading into downtown



Site Plan 



North - South Section



A.



B.



C.



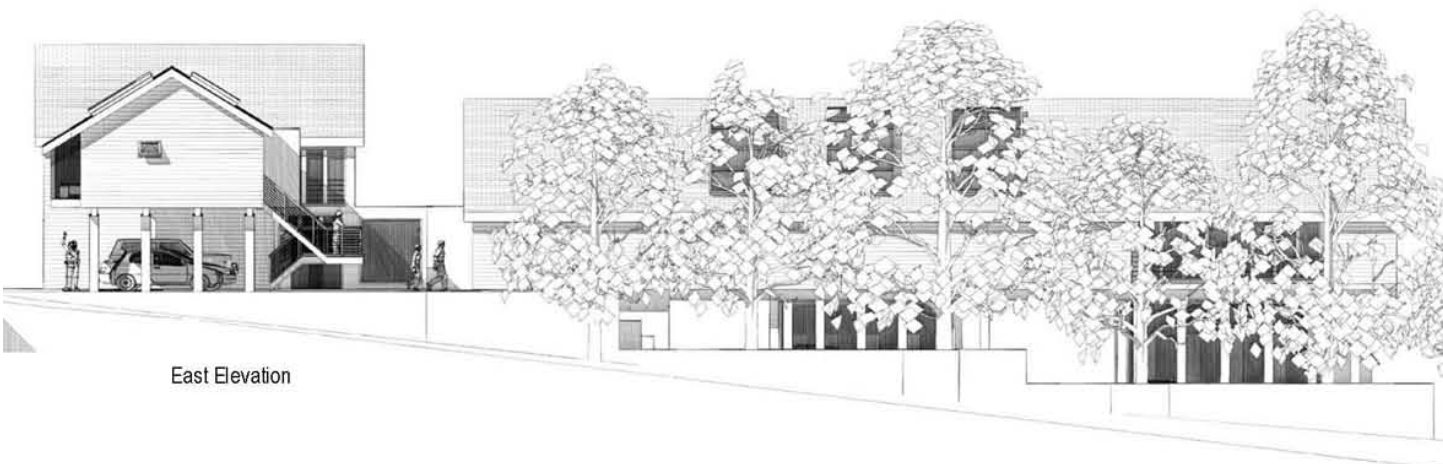
D.



E.



North Elevation

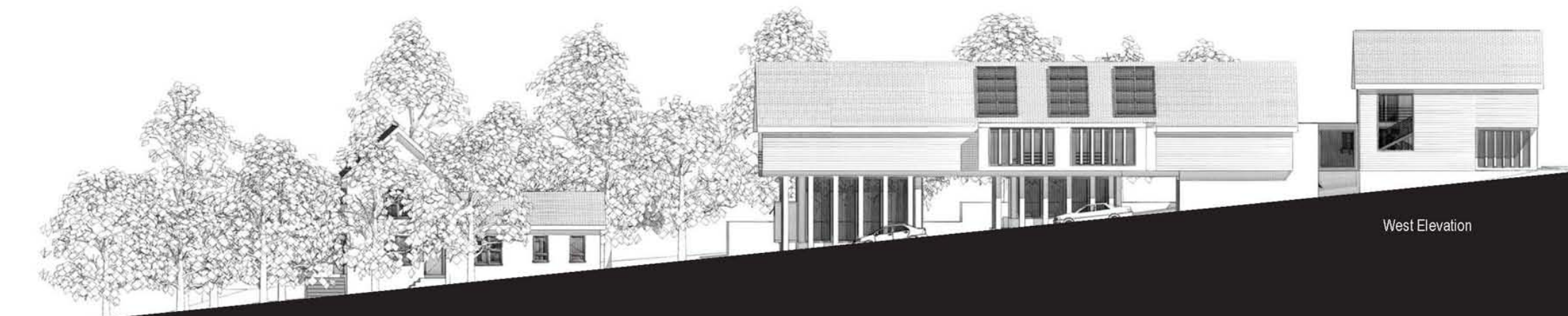


East Elevation



South Elevation

- A. View of exhibition space.
- B. Looking out of studio apartment into Haller house and exhibition space.
- C. View of outdoor seating area and the relationship between the studio apartments.
- D. View of corner detail windows, glass bridge, and studio balcony.
- E. Viewn of exhibition space deck.



West Elevation