

Ebey's Landing National Historical Reserve Interpretive Center, Coupeville WA.

Peter McDowell Hanley
Hanley@uoregon.edu
Fall 2009

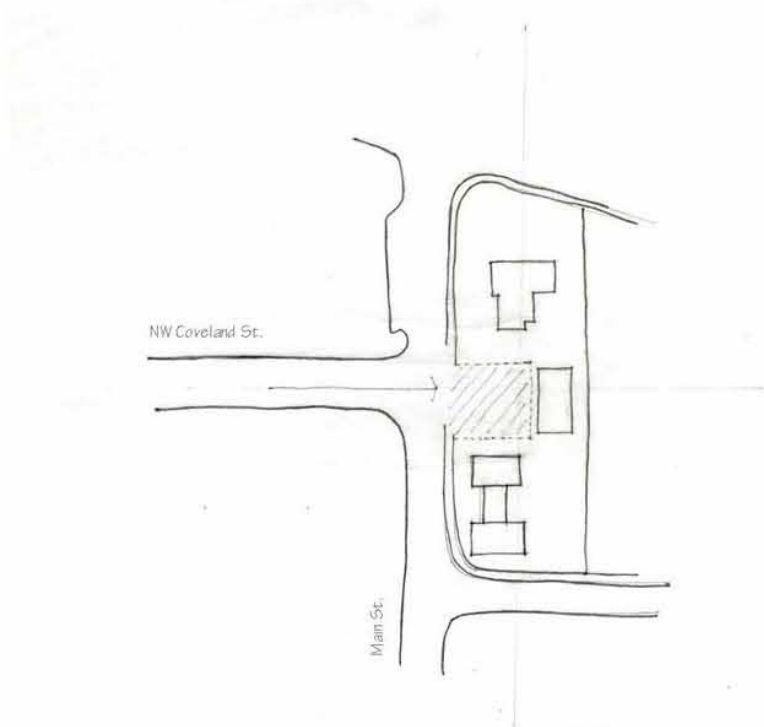
The Ebey's Landing Interpretive Center will serve as a new focal point for visitors to the Ebey's Landing National Historical Reserve. Situated prominently in downtown Coupeville, adjacent to the Captain Haller House at the corner of Front and Main St., the Interpretive Center design deals with two large-scale issues.

First is the urban design of the surrounding area through the formation of a new public/event space that will serve to better connect Front, Main and Coveland Streets, while simultaneously providing a community amenity and a potential source of revenue for the reserve.

Second is the design of new buildings in a historical context through the use of existing forms, scale and proportion. The Interpretive center, while clearly retaining the identity of a new and modern building should fit cohesively within the context of Coupeville and the Historical Reserve.



Site Map

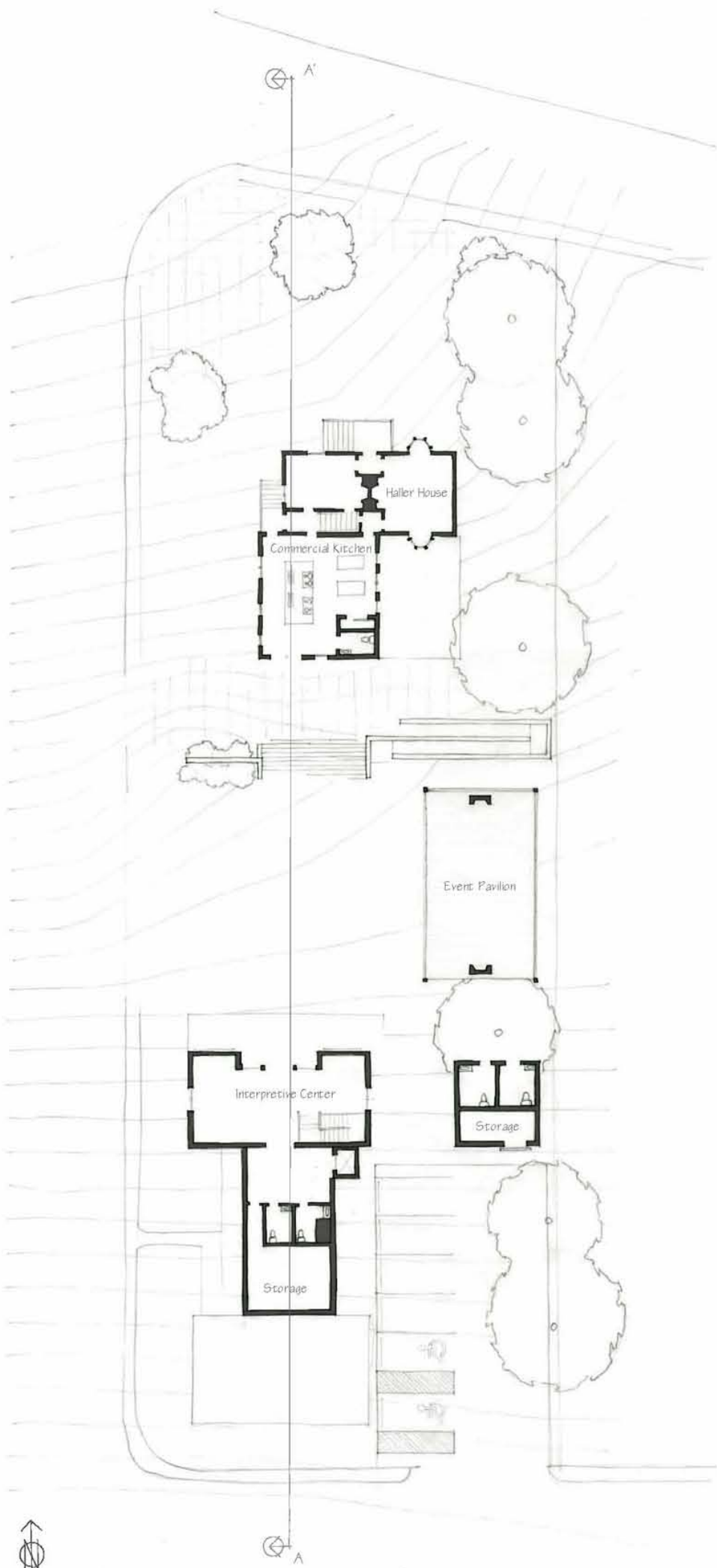


A New Public Space

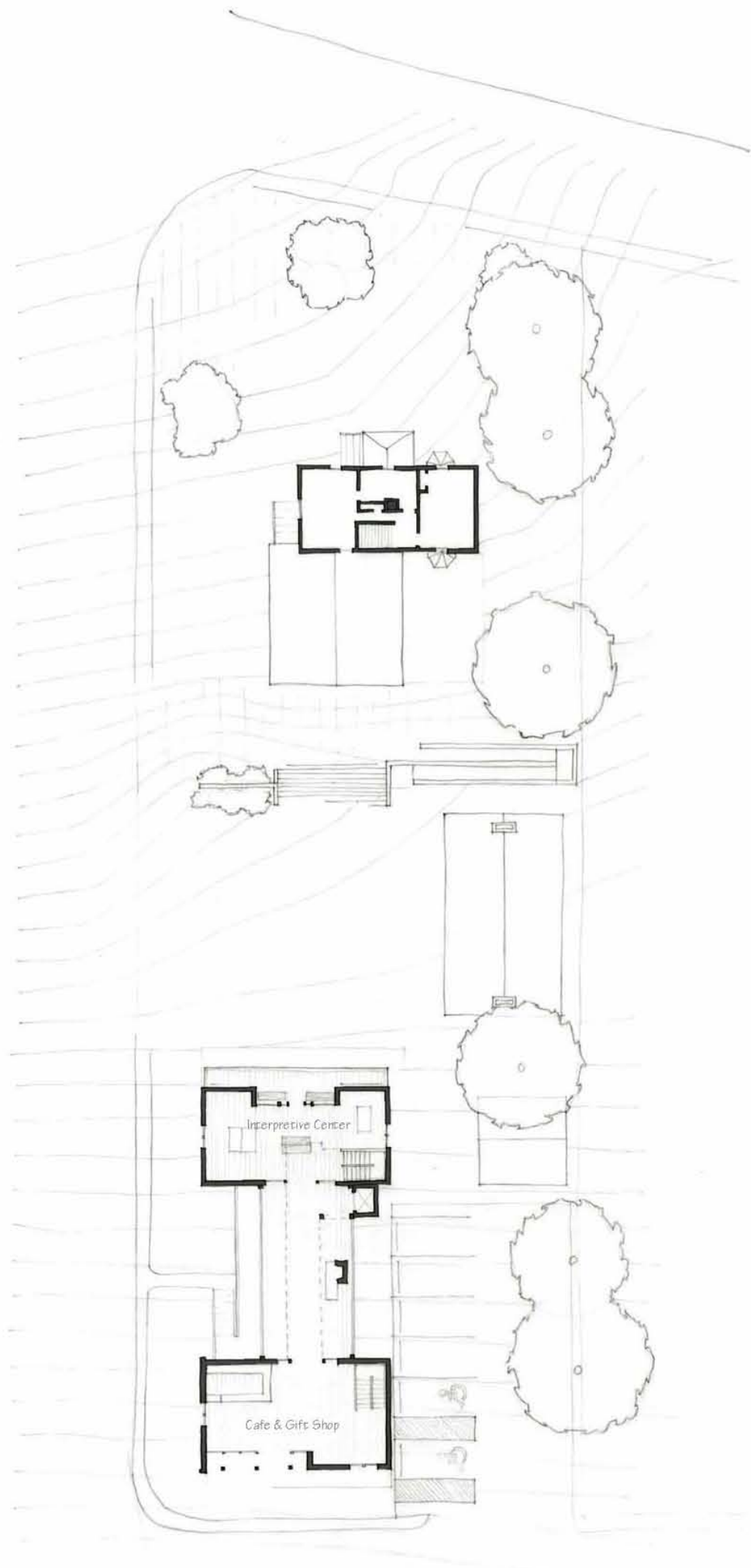


Extension of the Historic Fabric





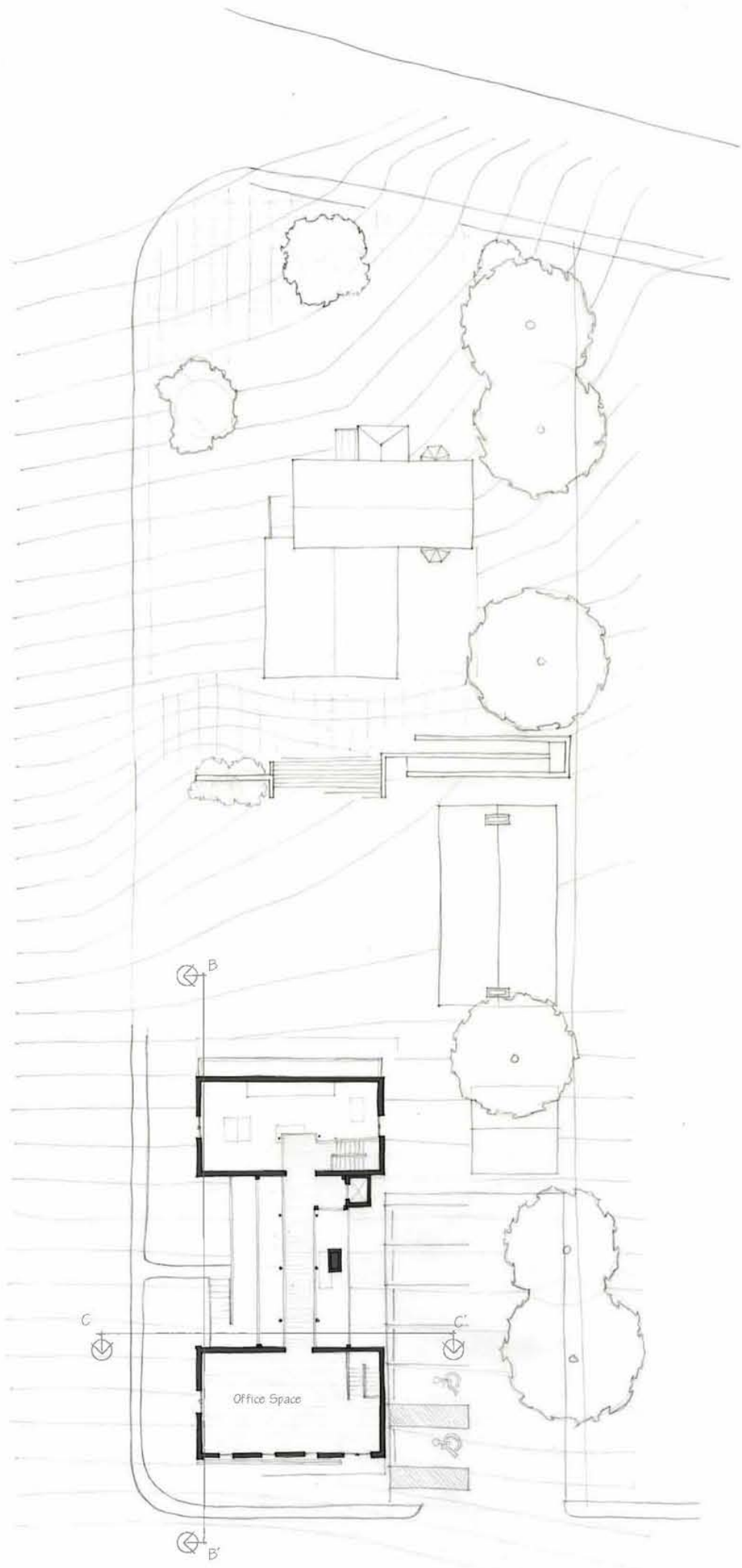
Plan 1 1/16" = 1'



Plan 2 1/16" = 1'



Section A - A' 1/16" = 1'



Plan 3 1/16" = 1'

Commercial Kitchen

The southern portion of the Haller House is to be renovated to include a new rentable commercial kitchen, bringing new life to the vacant home while serving both special event and local agricultural and small business needs.



Event Pavilion

The glass enclosed unconditioned event pavilion will serve as a new community gathering space as well as potential revenue source for the reserve.



A Place to Relax

The connection between the two major buildings of the interpretive center is lined with the same operable glazing that the event pavilion is and offers an enjoyable place to pause and potentially enjoy a cup of coffee or snack from the gift shop.

Coffee/Gift Shop

The gift shop is not only a potential source of revenue for the park service, but also for goods produced on the reserve and Ebey's Landing brand merchandise.



Section B - B'



Section C - C'