

EBEY'S LANDING VISITOR CENTER NATIONAL HISTORIC RESERVE

COUPEVILLE, WASHINGTON



The Ebey's Reserve Visitor Center serves as a focal point for the reserve. The design of the building resembles and celebrates the landscape of the reserve with a low-sloping green roof of prairie grass. The tower provides people the opportunity to see the surrounding landscape, including Penn Cove, Mt. Baker, downtown Coupeville and the San de Fuca Uplands. The tower also serves as a visual focal point from the landscape, without detracting from the historic character of the town.

The Haller House is a historic building that retains much of its original construction and character. Adapting the Haller House for contemporary use would require extensive reconstruction and the true historic qualities would be lost. The Haller House provides people the unique opportunity to experience a building from the 19th century, the way it was in the 19th century. A portion of the building could be used as a seasonal gardening center for the local gardening club or for a gardening function relevant to the purpose of the Visitor Center



MAIN STREET PERSPECTIVE



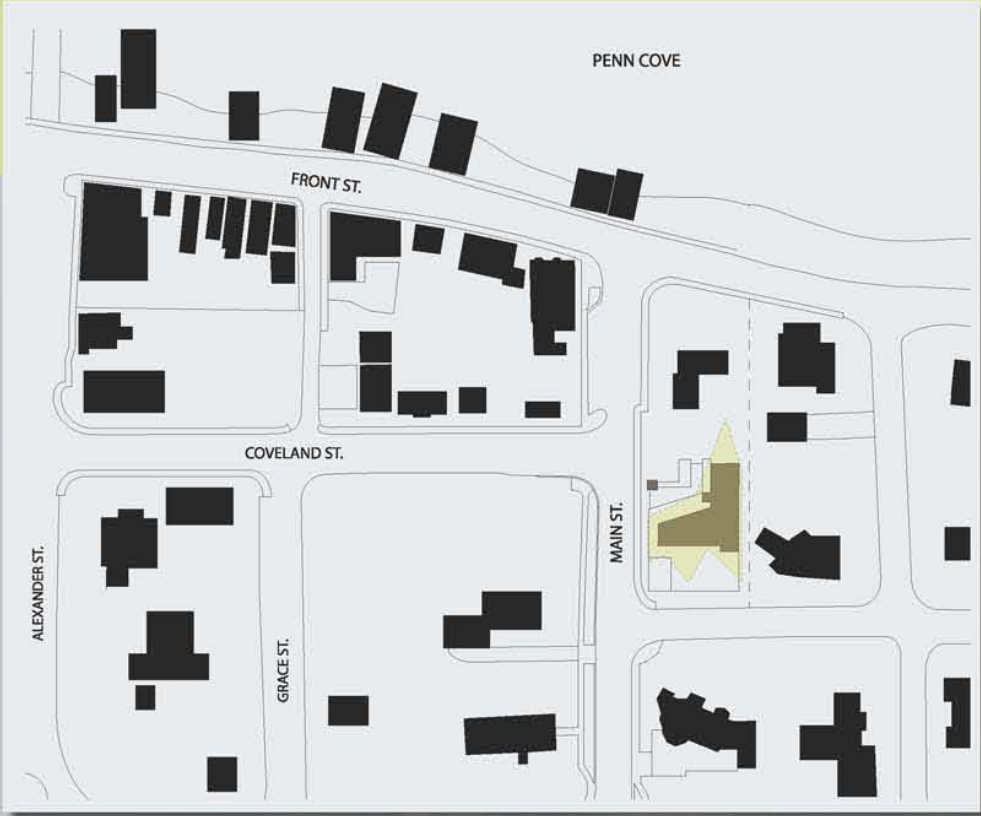
COVELAND STREET PERSPECTIVE



FRONT STREET PERSPECTIVE



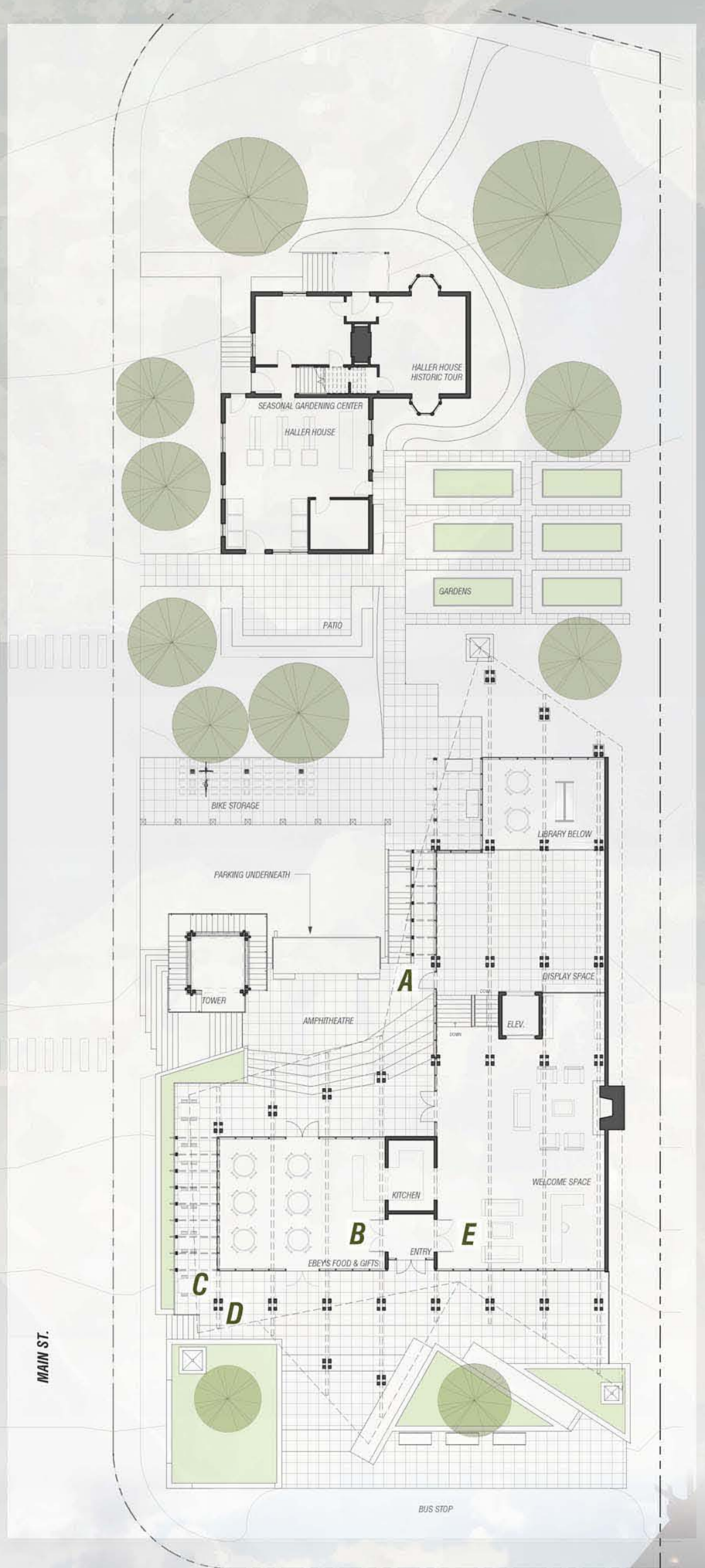
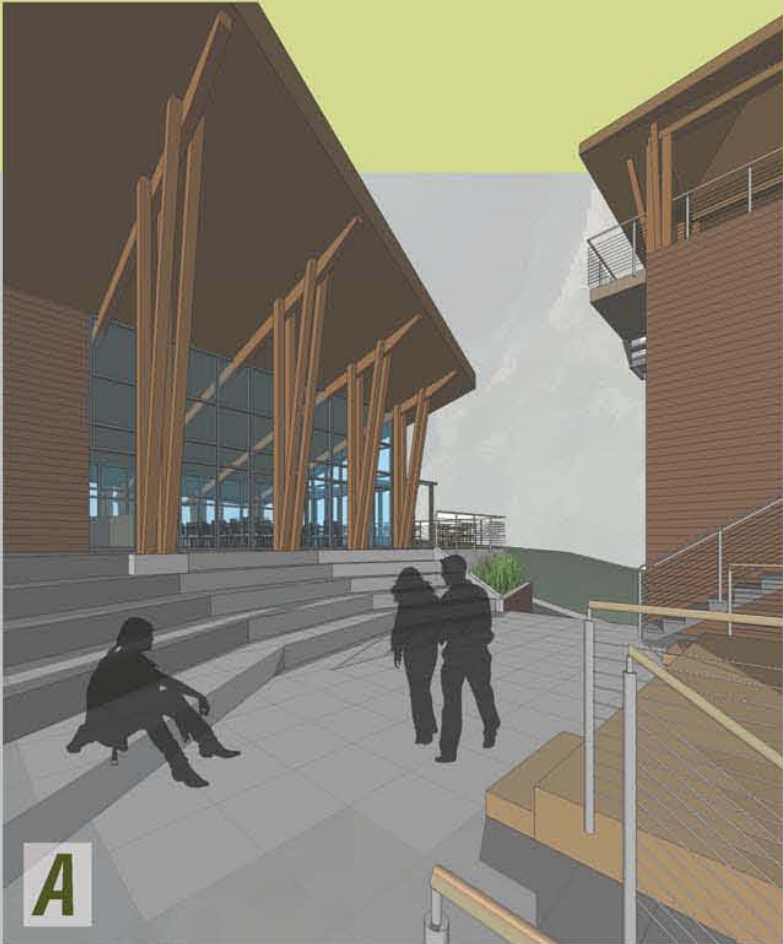
EBEY'S LANDING VISITOR CENTER NATIONAL HISTORIC RESERVE COUPEVILLE, WASHINGTON



AXONOMETRIC VIEW



EBEY'S LANDING VISITOR CENTER
NATIONAL HISTORIC RESERVE
 COUPEVILLE, WASHINGTON



UPPER LEVEL PLAN scale: 3/32" = 1'-0"



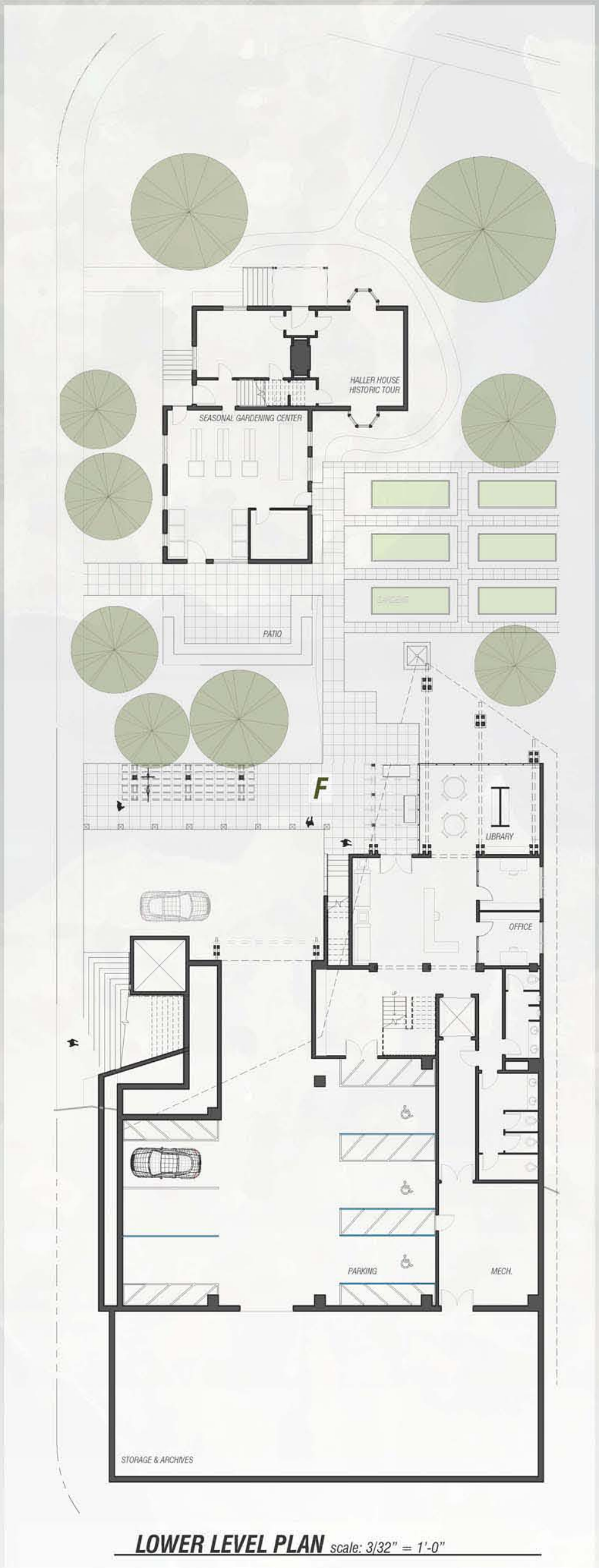
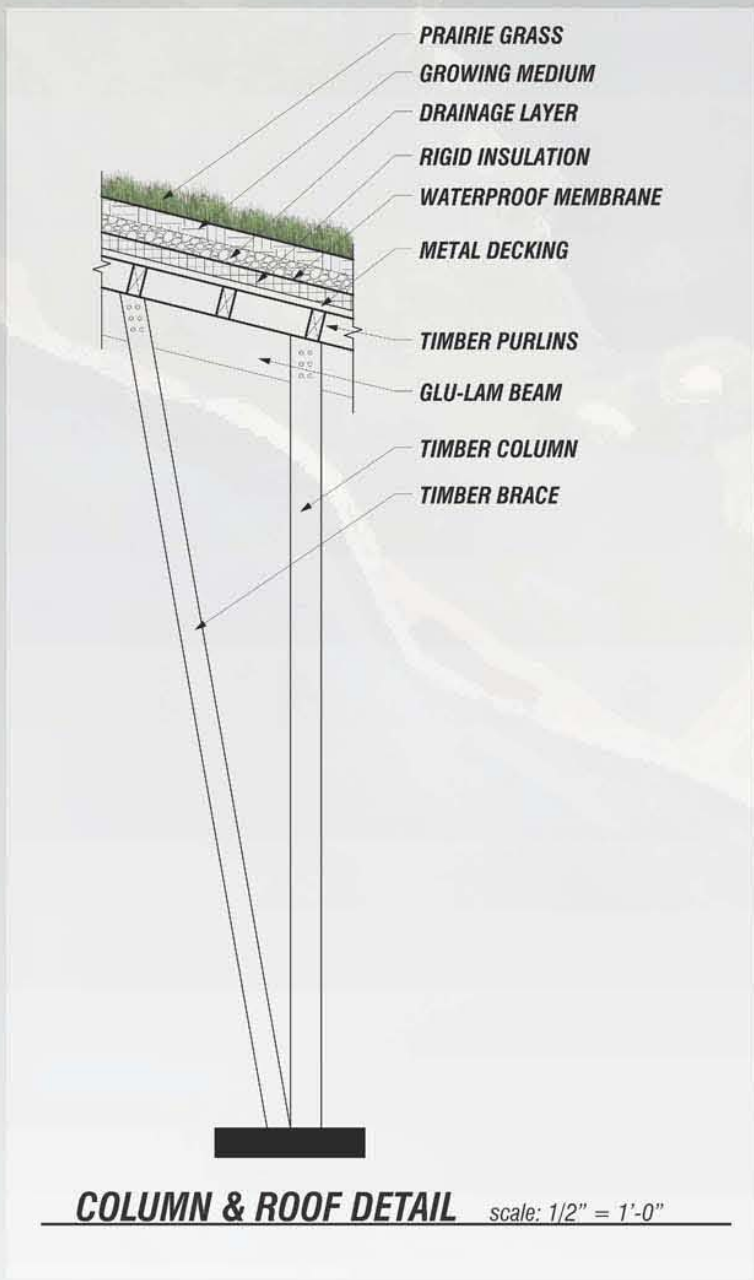
EBEY'S LANDING VISITOR CENTER
NATIONAL HISTORIC RESERVE
 COUPEVILLE, WASHINGTON



E



F



NORTH-SOUTH SECTION scale: 1/16" = 1'-0"