

# EBEY'S LANDING VISITORS' CENTER

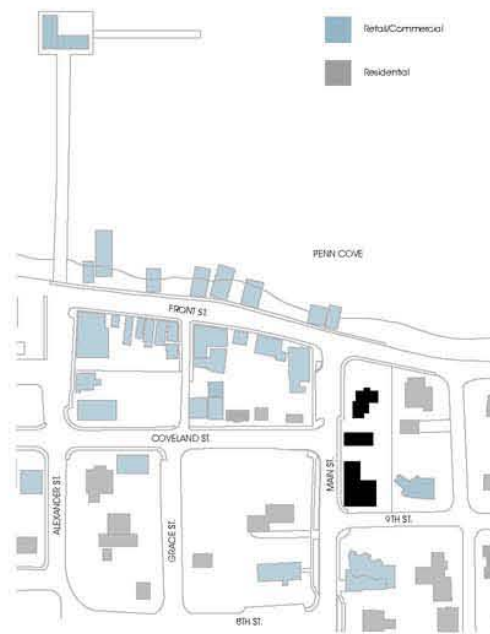
CARESSE LEE | ARCH 484 | FALL 2009 | PETER KEYES



Ebey's Landing Visitors' Center is located in Coupeville, WA. Coupeville is one of Washington's oldest towns and is also a part of the National Historical Reserve. Our site is located next to the historic Granville Haller House. Although the house was built in 1866, minus a few modern renovations, it still retains much of its historic integrity. This unique condition led to a design intent of essentially keeping the house as it is and building a separate visitor's center.

#### Design Intentions:

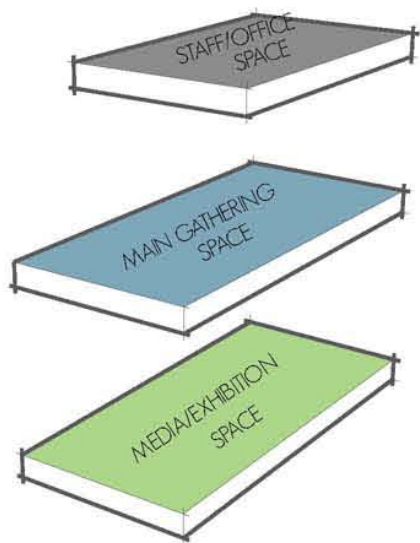
- Keeping the Visitor's Center close in scale to the site context.
- An open plan carried through all the aspects of the program.
- A clear indication of how the building works by exposing/creating voids to display circulation and how spaces relate.



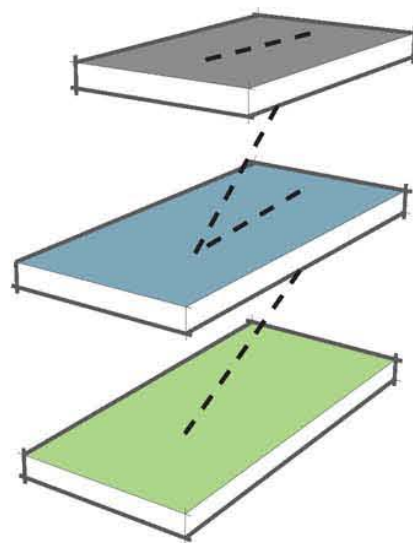
SITE CONTEXT



INTERIOR PERSPECTIVE



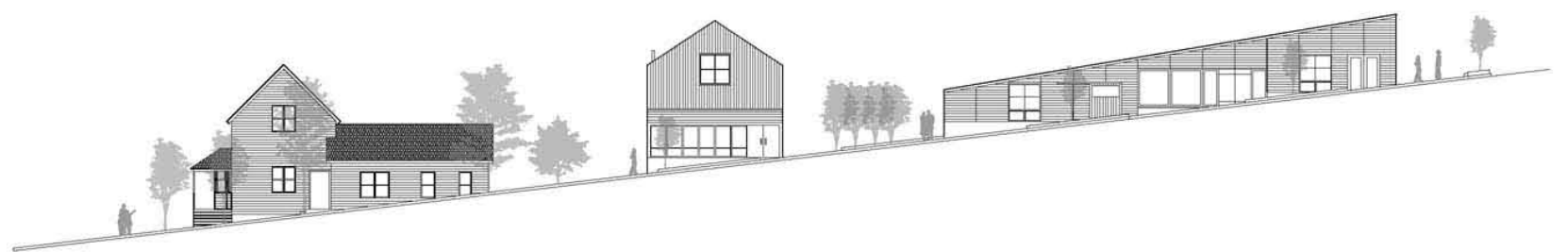
ZONING



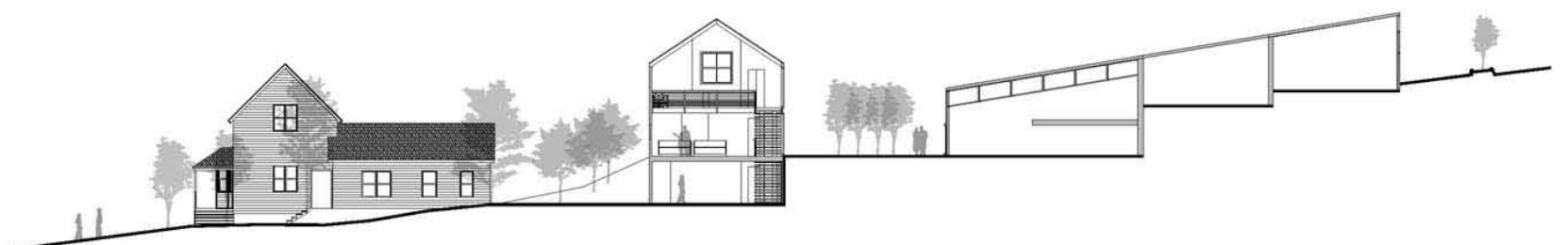
CIRCULATION



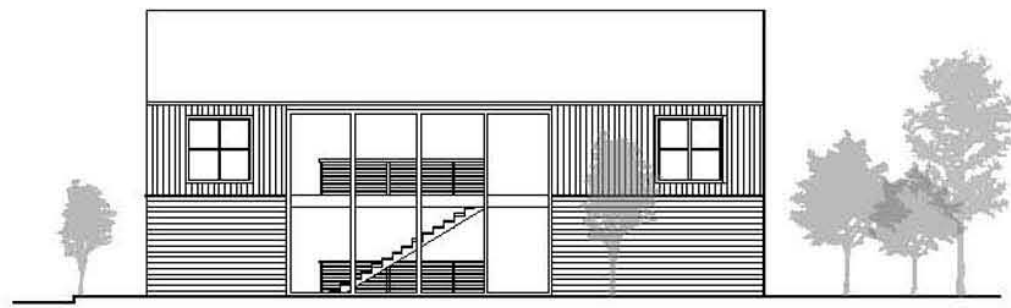
VIEW FROM FRONT ST.



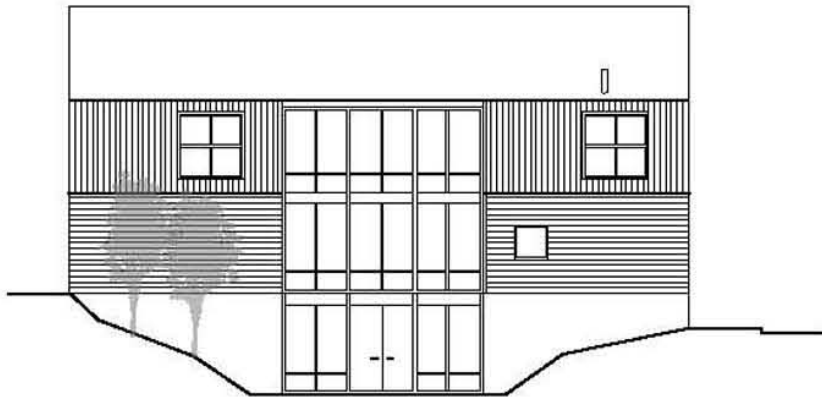
MAIN STREET ELEVATION | 1/16" = 1'-0"



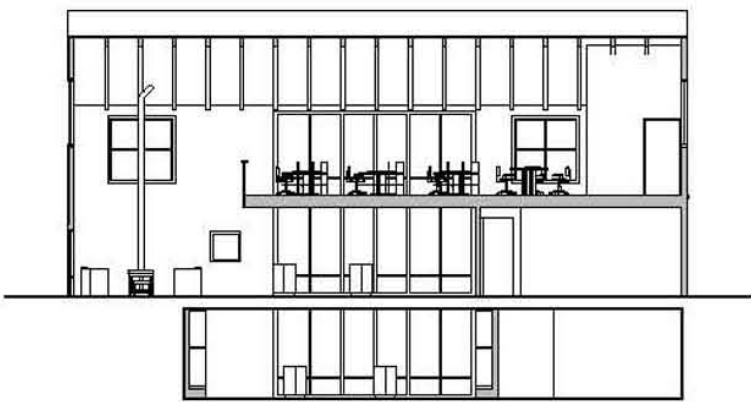
SECTION A:A



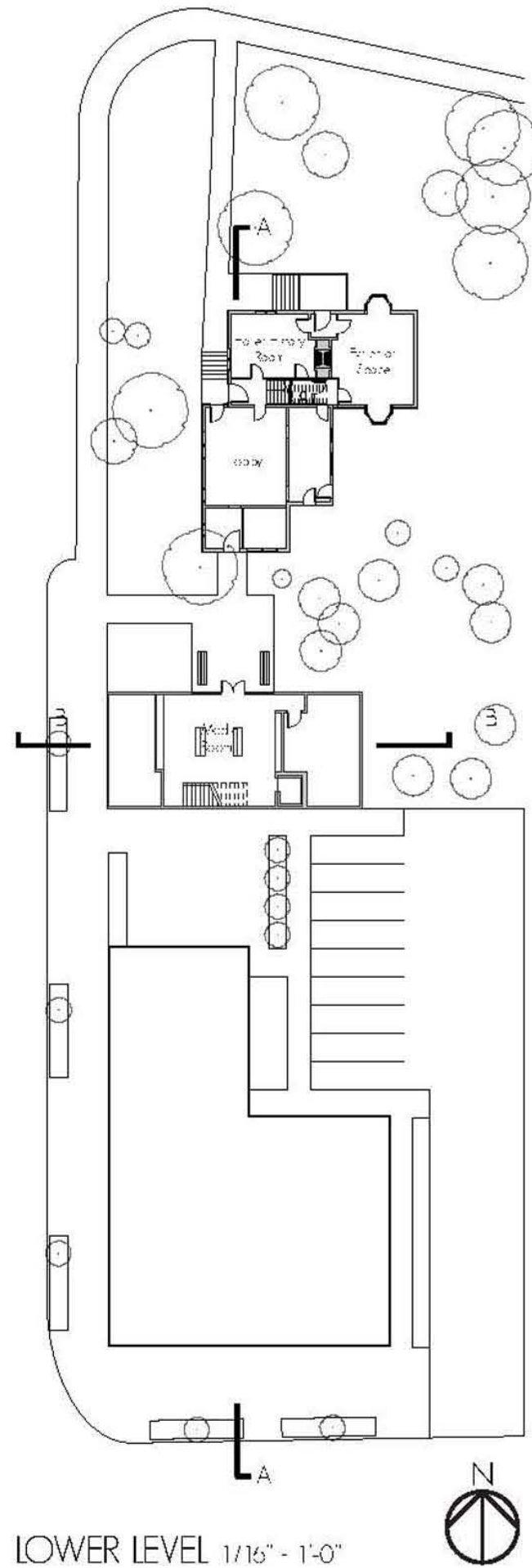
SOUTH ELEVATION 1/8" - 1'-0"



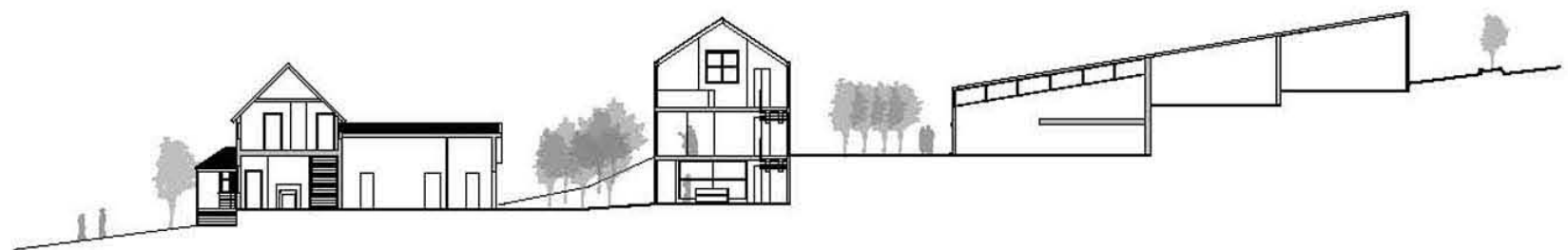
NORTH ELEVATION



SECTION B:B



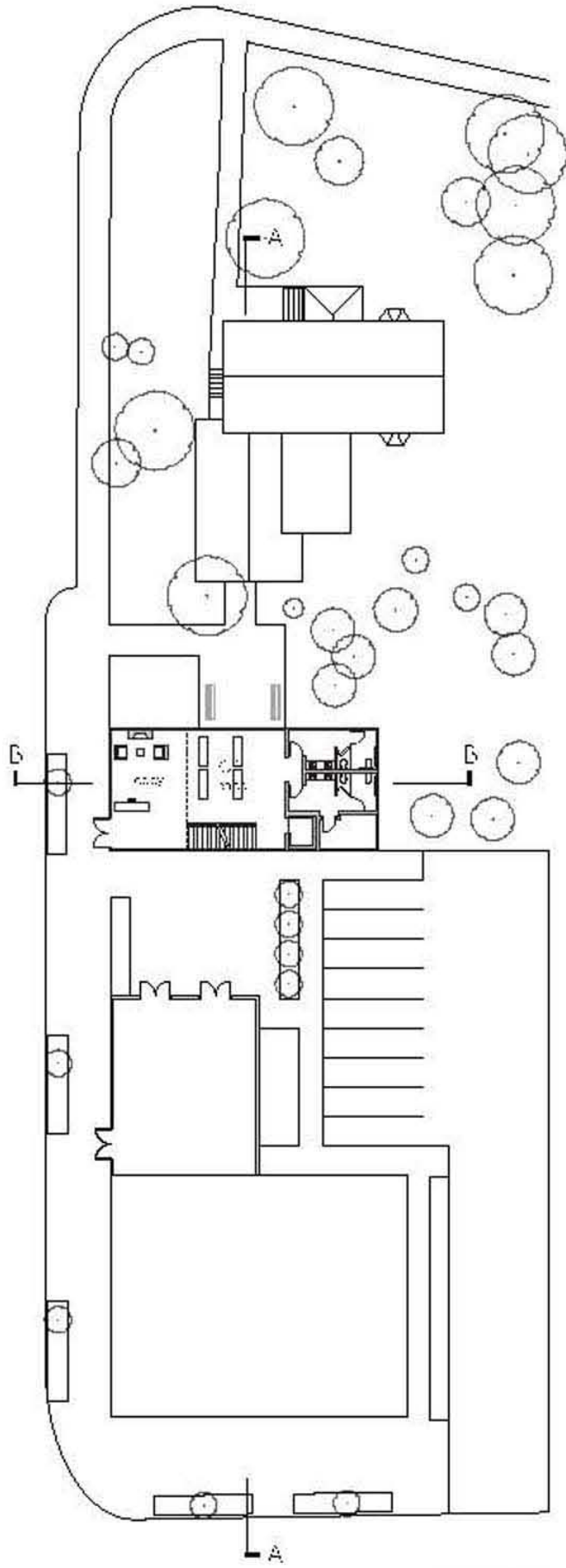
LOWER LEVEL 1/16" - 1'-0"



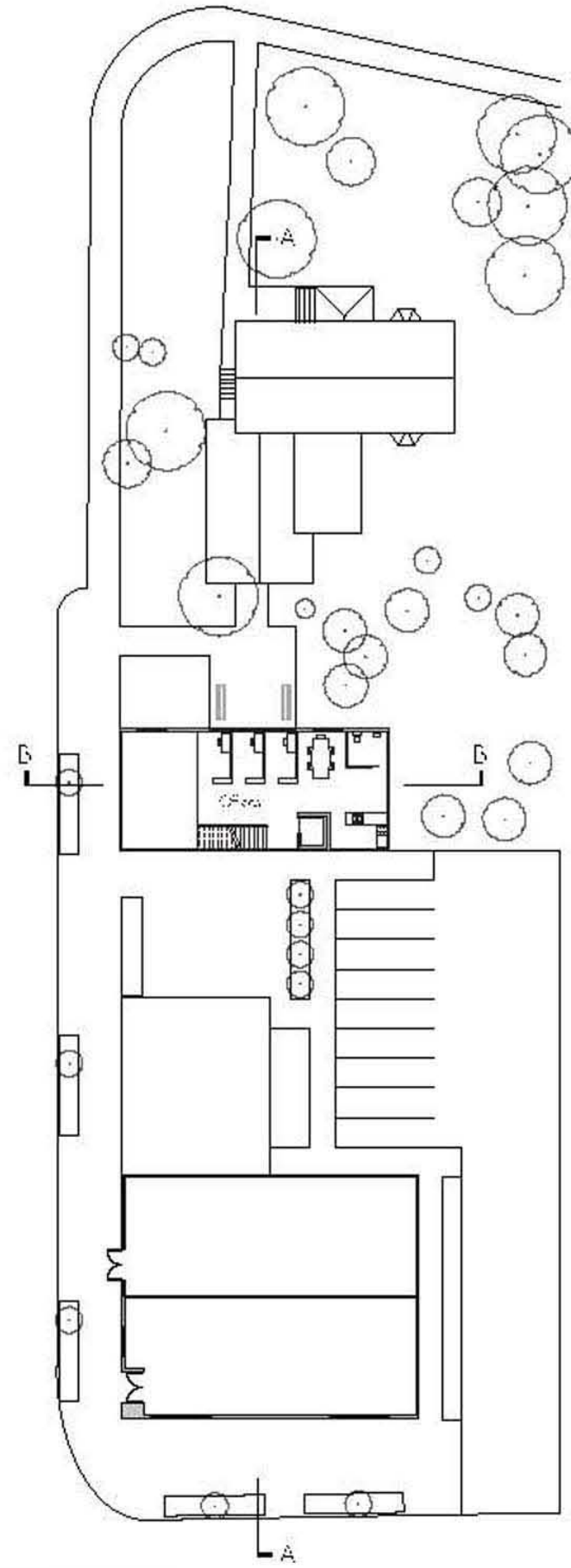
MAIN STREET ELEVATION 1/16" - 1'-0"



SECTION A:A



MAIN LEVEL 1/16" 1'0"



UPPER LEVEL 1/16" 1'0"



INTERIOR PERSPECTIVE