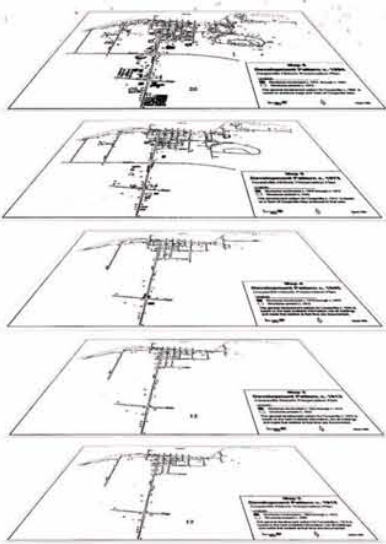


# Historic Coupeville

## Digging into the Past

My proposal for a new visitors center in Coupeville, Washington is meant to be a place where visitors and locals are brought together to observe, understand and write upon the history of Coupeville. There exists a strong dichotomy of the local culture of Coupeville: that of the settlers, and that of the natives, the Coastal Salish Indians. My intent was to preserve the local building heritages while creating a space that is modern and functional. A place where history can be researched but also written. The new Coupeville Visitors Center will act as a place where different cultures are brought together to collaborate in the effort to preserve the meaning of Coupeville's unique history.



Development of Coupeville



The Haller House, early 1900's



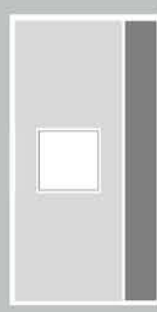
Remains of a Salish Potlatch House, Whidbey Island



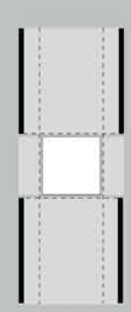




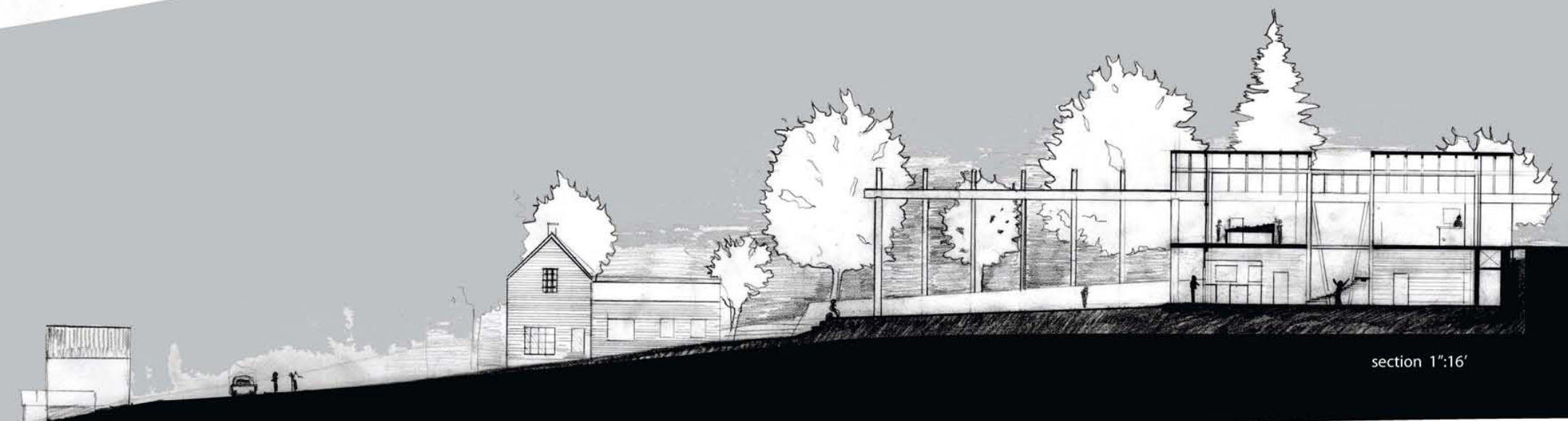
Parti



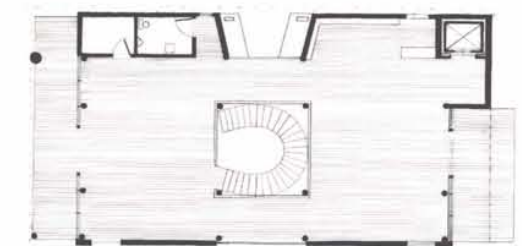
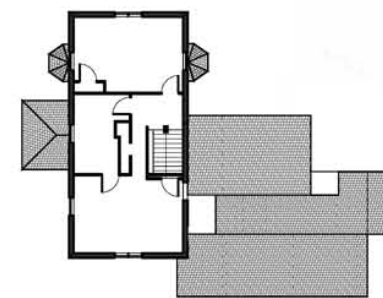
Service/  
Served



Light/  
Dark



section 1':16'



Upper Floor Plan 1":16'

Lower Floor Plan 1":16'

