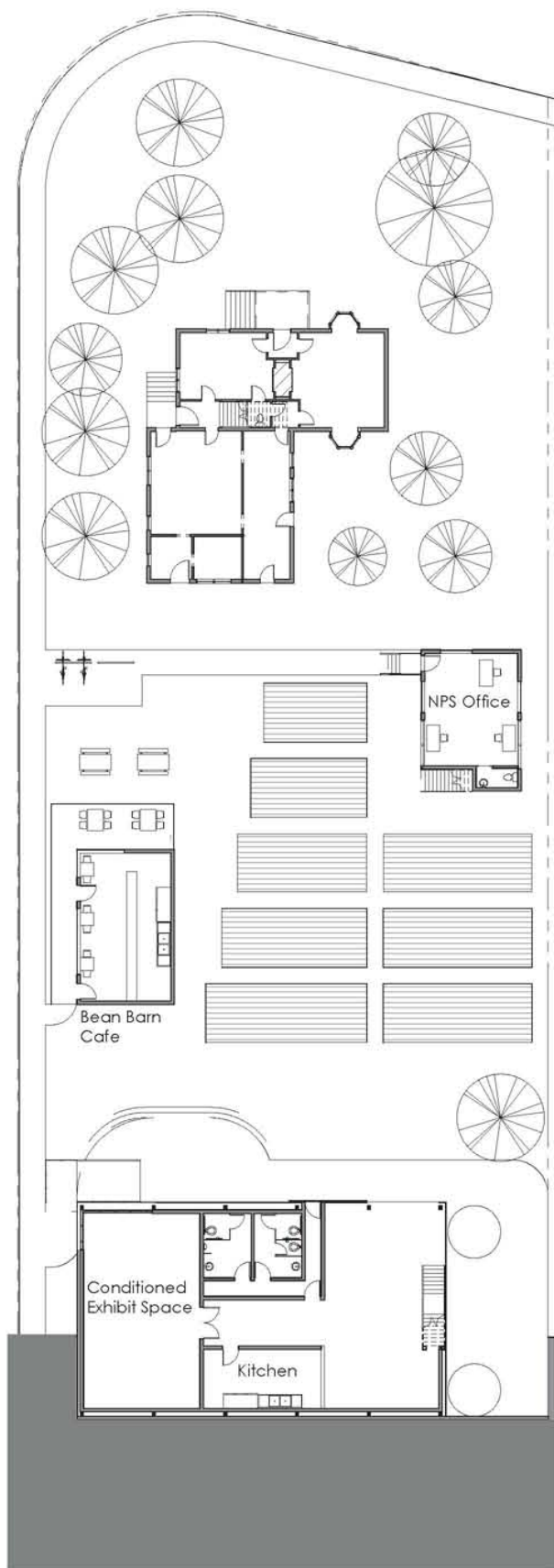
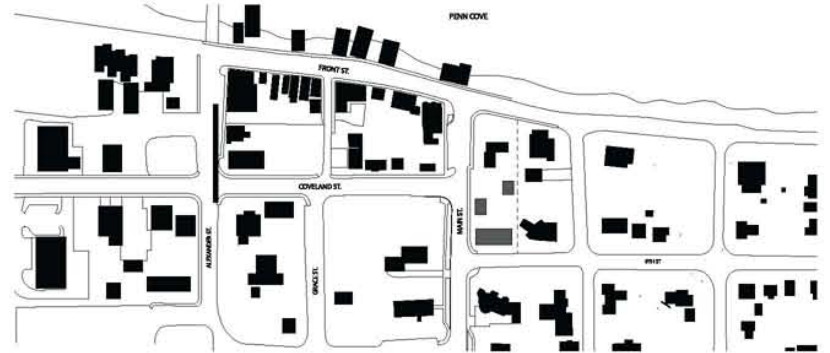


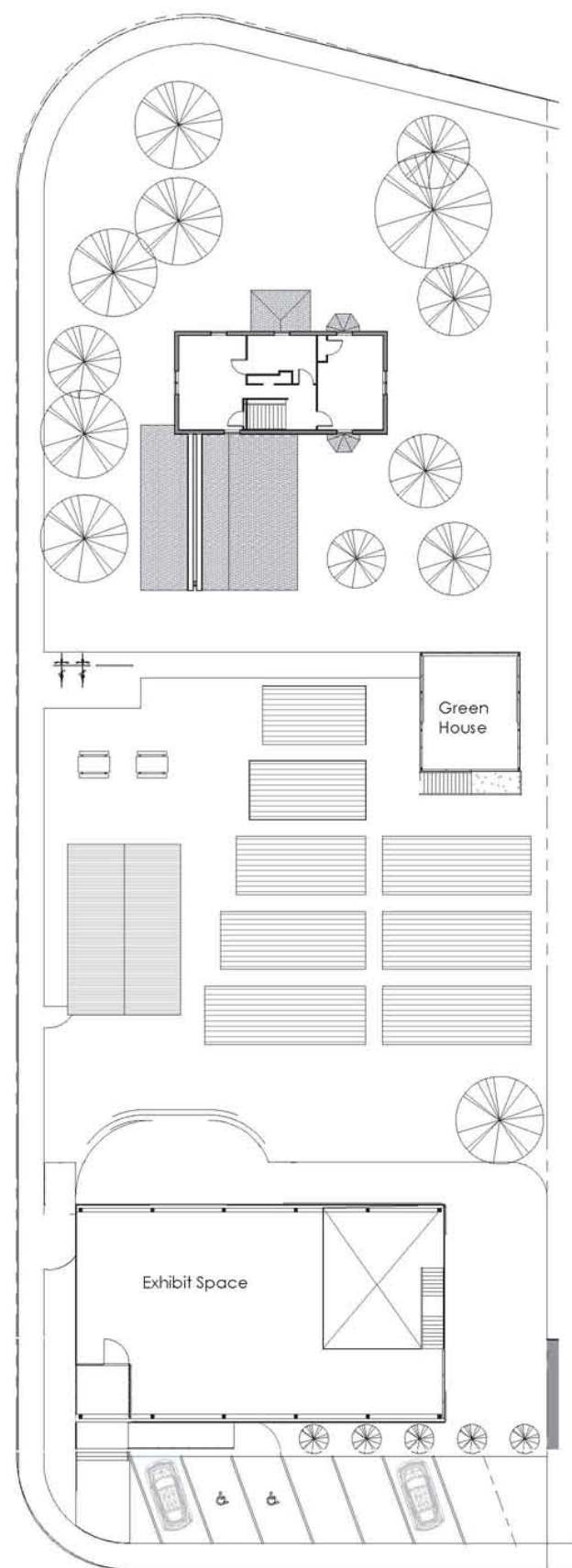
Ebey's Reserve Visitor Center

Michael Ober - Studio Keyes - 12.4.09

The Ebey's Reserve Visitor Center is a reflection of the Reserve's agrarian character set amongst urban surroundings. The Visitor Center seeks to embody Ebey's Reserve by combining the agrarian with the urban, and the old with the new through building form, materiality, and building placement. A barn set amongst houses stands out as a landmark, attracting visitors through its novelty whilst staying contextually true to the majority of the Reserve. A community/demonstration garden brings agriculture to life in Coupeville while offering residents a place to garden and gather in the summer months.

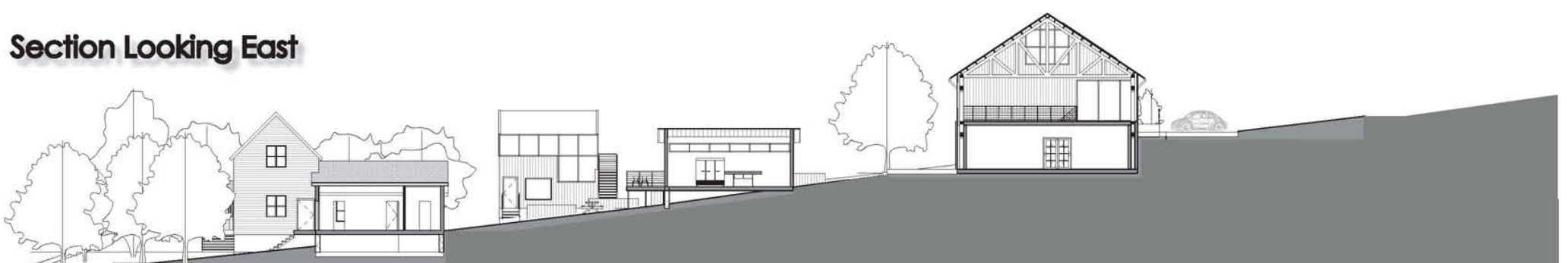


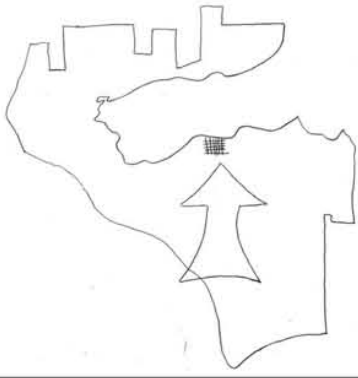
Level 1



Level 2

Section Looking East

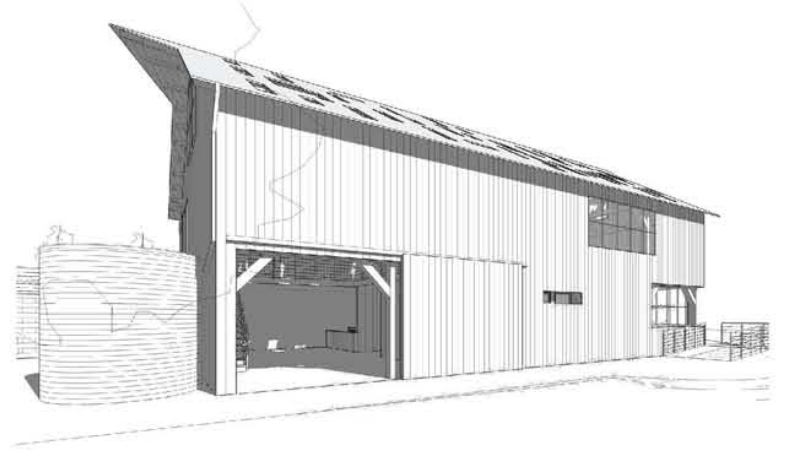
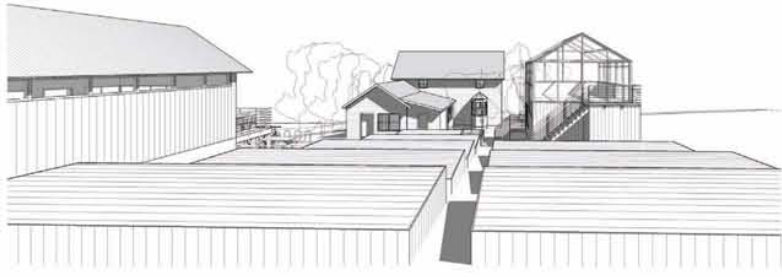




Bringing The Reserve To Coupeville

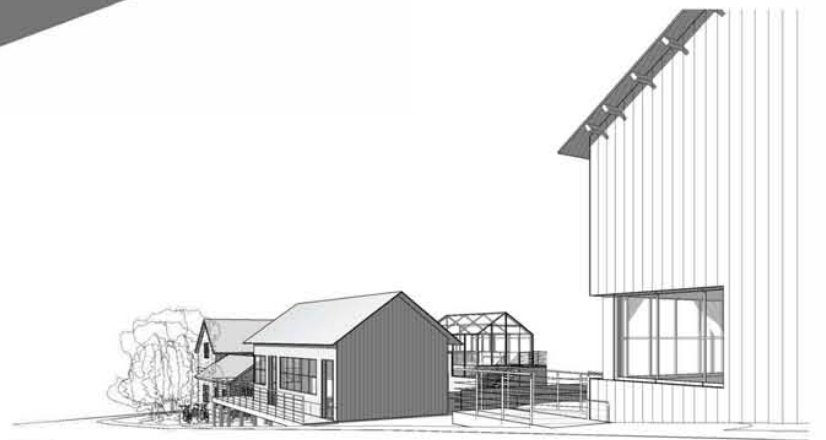
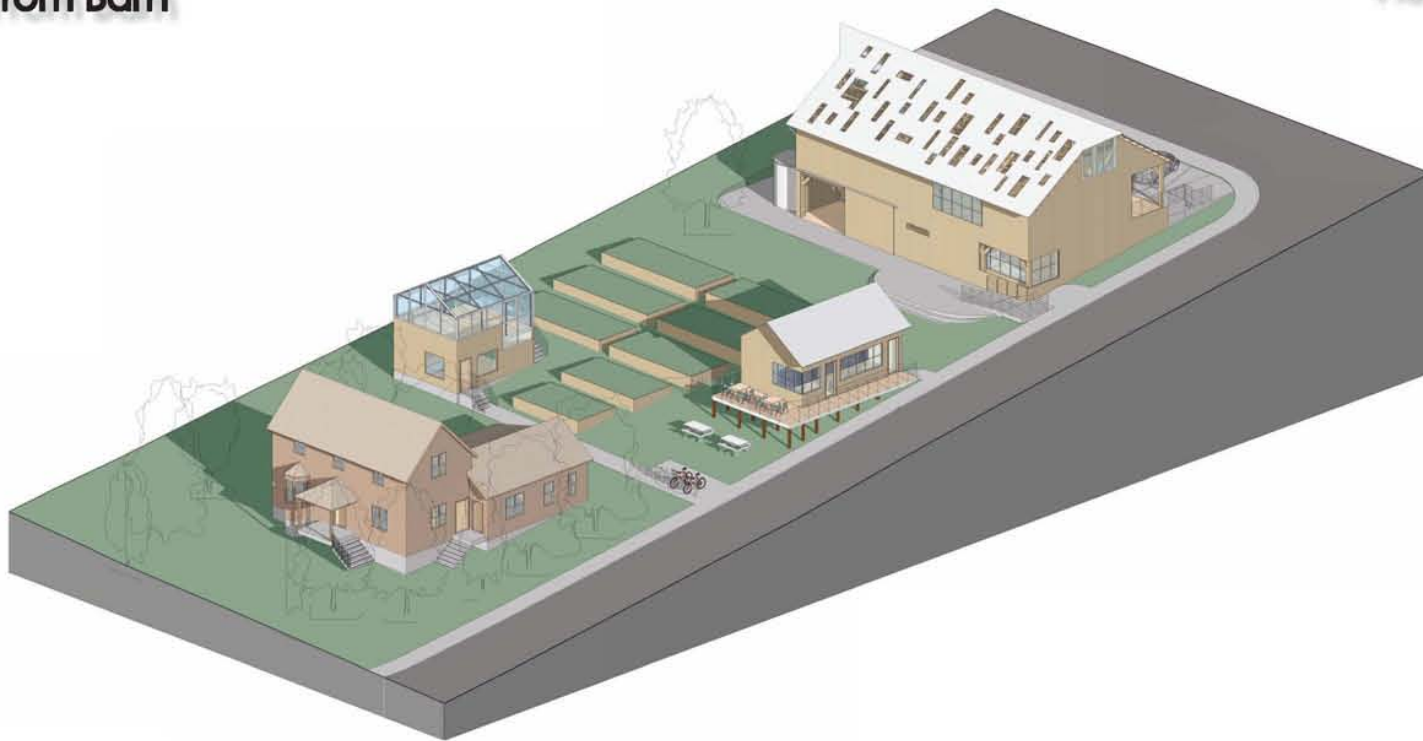
Visitor Center Roof Inspiration

Urban Transition to Agriculture



View From Barn

View From Garden



View Down Main Street

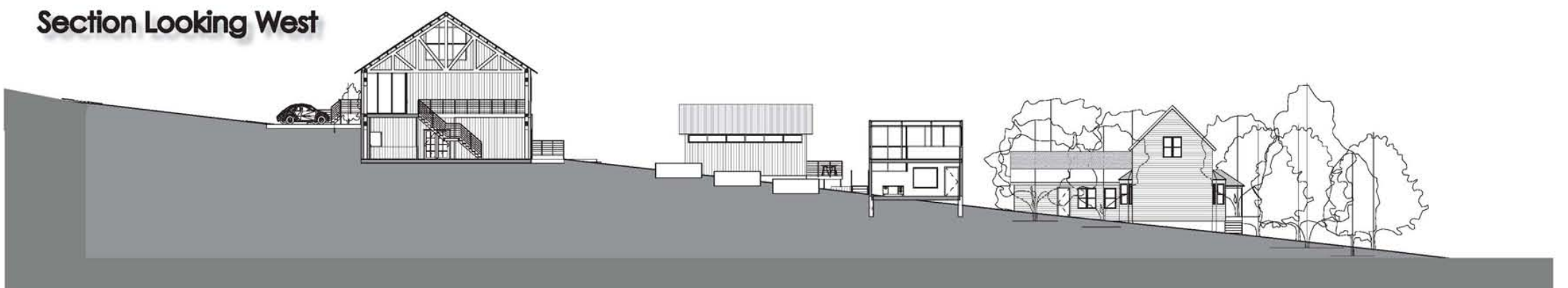


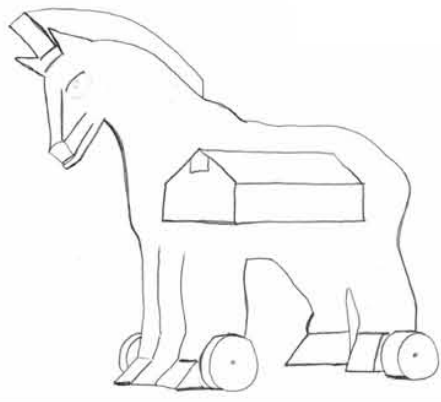
View Up Main Street



View From Coveland

Section Looking West





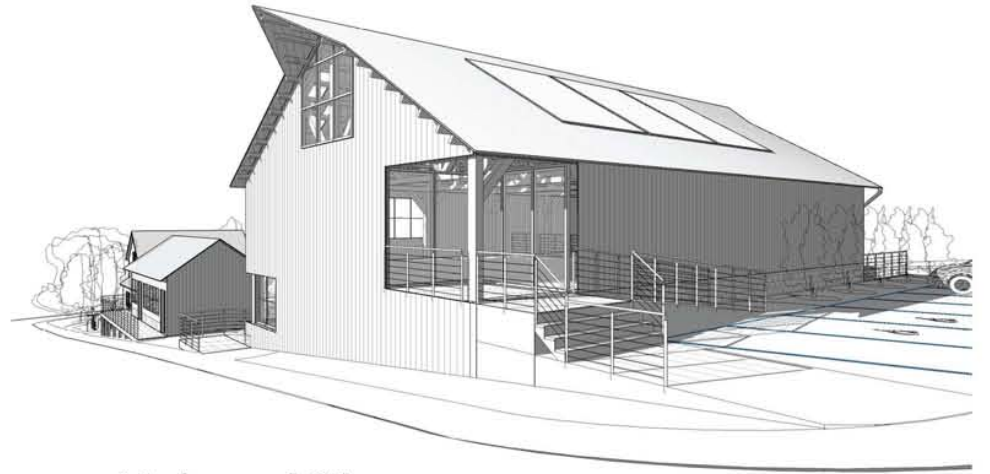
Non-Residential Building
In Trojan Horse



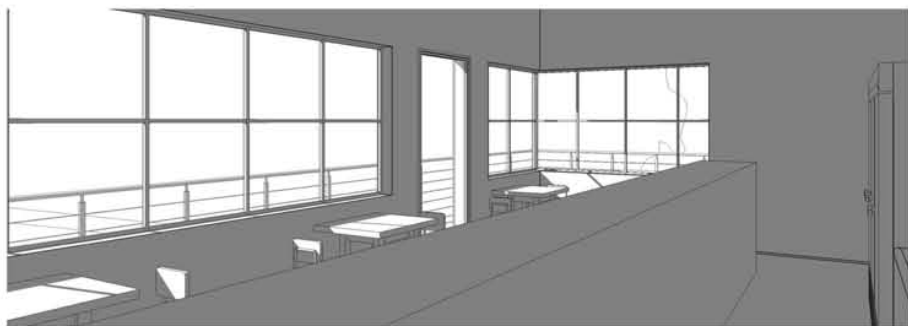
Visitor Center Roof Inspiration



Barn Exhibit Space



Main and 9th



Bean Barn Cafe in the Afternoon



Section Perspective of Barn

