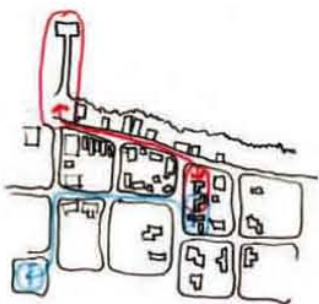
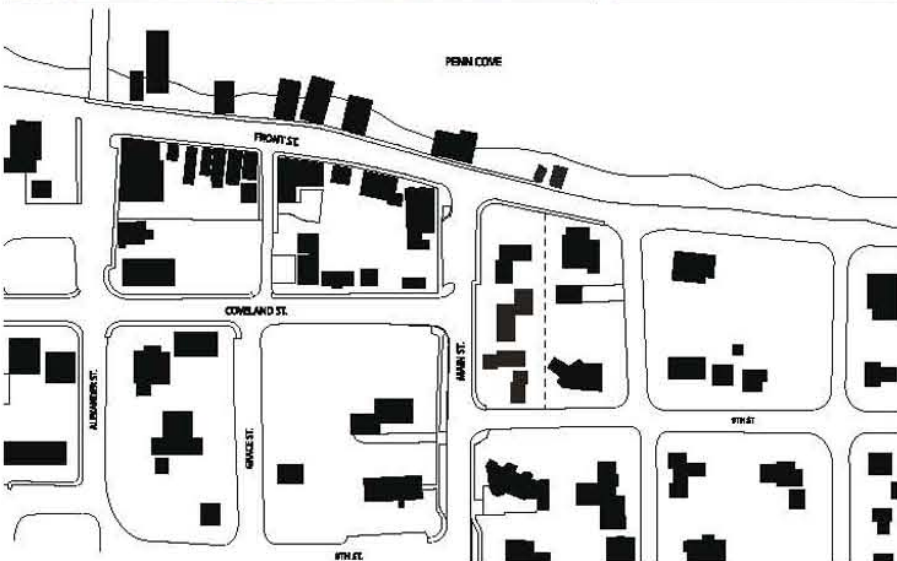


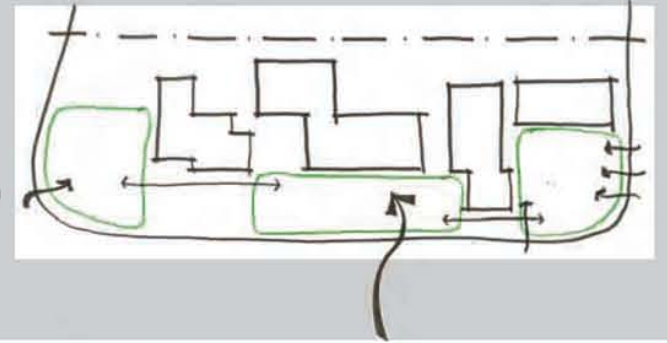
# VISITOR'S CENTER at EBEY'S LANDING HISTORIC RESERVE

a project by elizabeth m schmidt • fall 2009



The Visitor's Center at Ebey's Landing Historic Reserve should be a place for both tourists and residents. It should provide a welcoming environment that encourages positive interaction and cooperation between the many people occupying this particular site at any time.

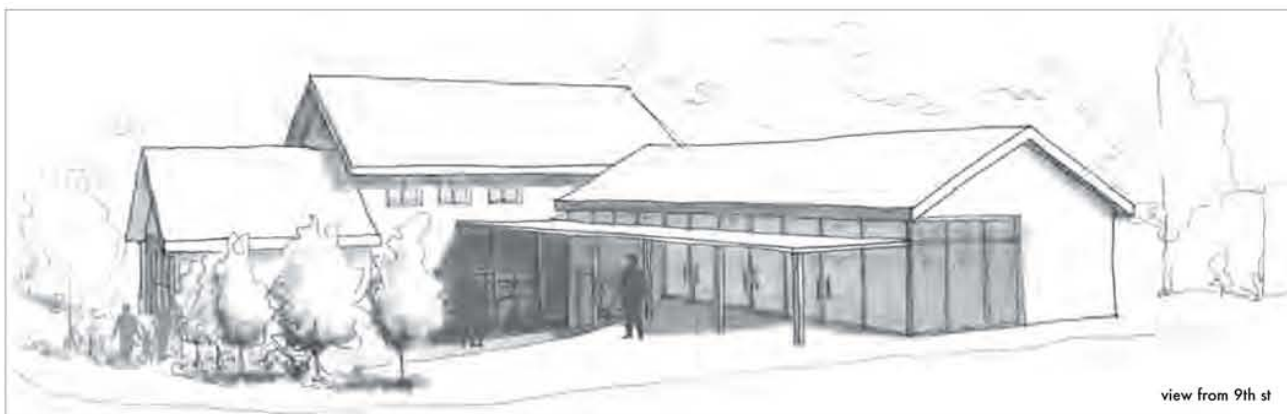
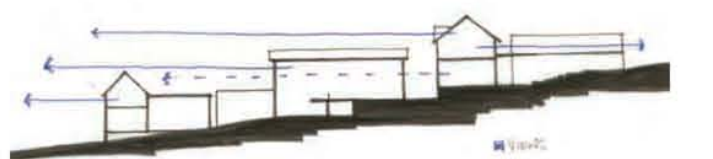
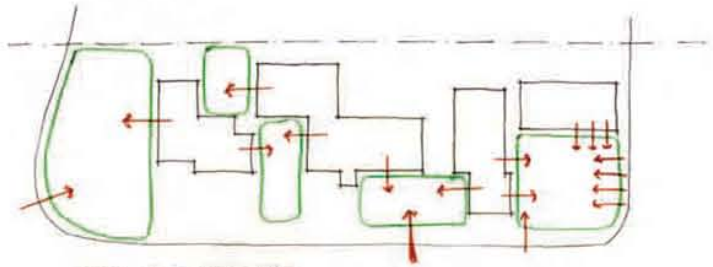
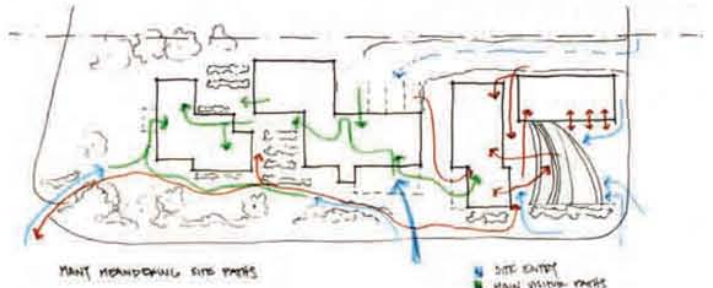
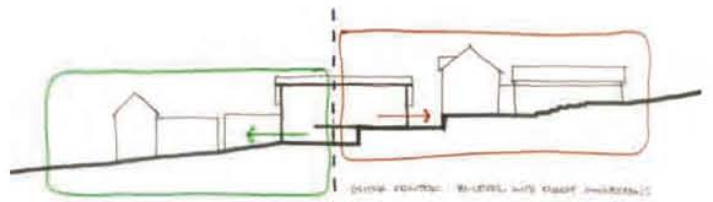
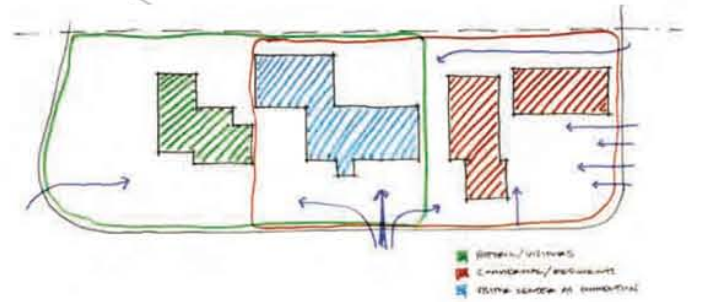
The site is in a prominent location and directly addresses three main streets. As such, the goal for the entire site is to create an entrance to the downtown area, draw tourists from the waterfront to other areas of Coupeville and create a public place for all residents to show pride in their home.



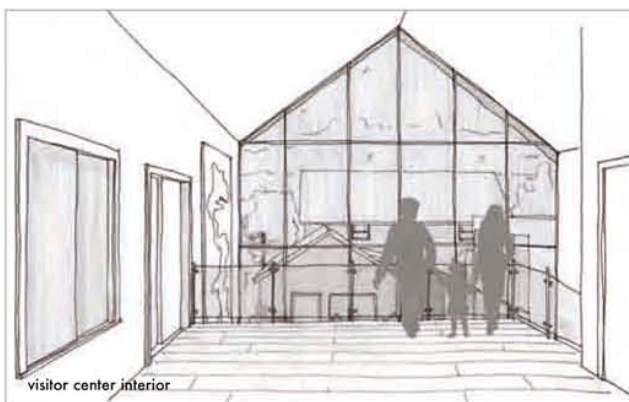
view from coveland



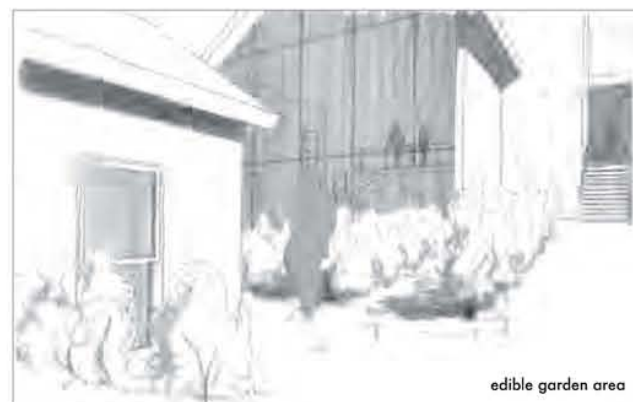
view from front st



view from 9th st



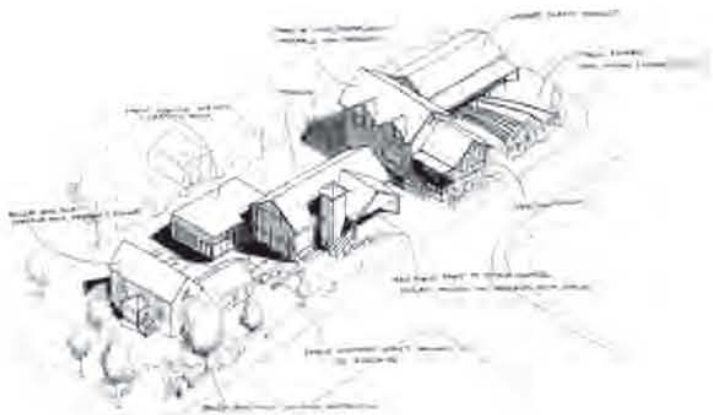
visitor center interior



edible garden area



view north along main st



store 'fronts'



'back' entrances