

# BAYSIDE BOARDWALK

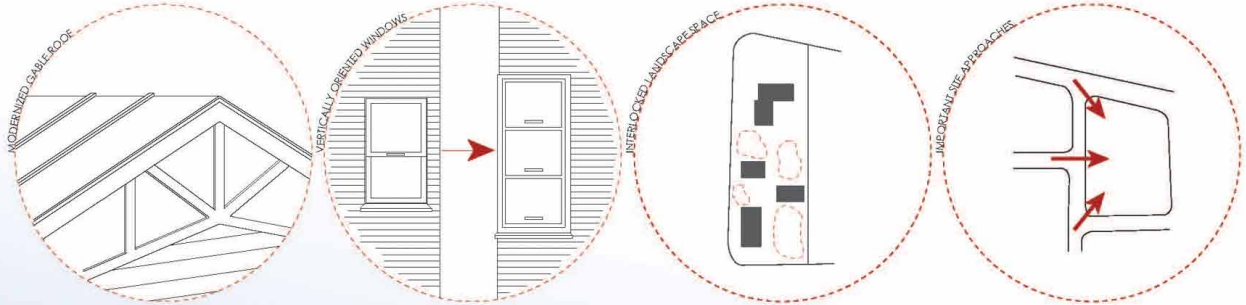
COUPEVILLE, WA | VISITING CENTER | CAFE | RECREATIONAL HALL ANNEX

JAKE WEBER  
 UO DEPARTMENT OF ARCHITECTURE | FALL 09



THE SMALL TOWN OF COUPEVILLE (POPULATION: 1,700) IS LOCATED ON WHIDBEY ISLAND, NORTH OF SEATTLE, WA. THE TOWN ITSELF RESIDES ON EBEY'S LANDING NATIONAL HISTORICAL RESERVE, THE FIRST OF OUR NATION. OF THE 17,000 ACRES OF LAND ON THE RESERVE, APPROXIMATELY 5,500 ARE AGRICULTURAL FARMING.

THE NATIONAL PARK SERVICE IS IN NEED OF OFFICE SPACE AND A SMALL VISITING CENTER IN THE NEAR FUTURE. THEY HAVE SUGGESTED BUILDING RE-USE OF A HISTORICAL HOUSE CONSTRUCTED IN THE LATE 1800s; HOWEVER, RENOVATING THE HOUSE TO SUIT COMMERCIAL NEEDS WILL LIKEY RUIN THE INTEGRITY OF THE HISTORICAL STRUCTURE. THIS PROJECT ADDRESSES AN ALTERNATE WAY TO PROVIDE THE NATIONAL PARK SERVICE WITH THEIR SPATIAL NEEDS AND SIMULTANEOUSLY REHABILITATE THE SITE AND TOWN OF COUPEVILLE.





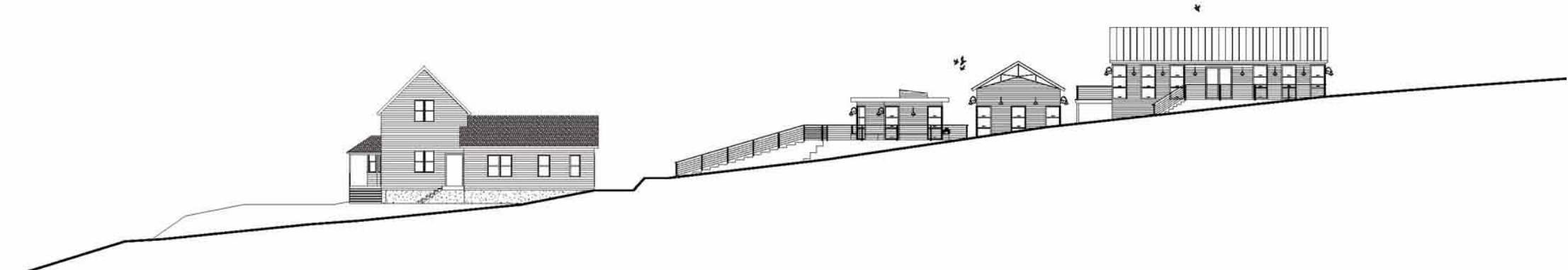
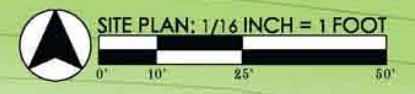
SITE PERSPECTIVE FROM COVELAND ST.



SITE PERSPECTIVE FROM FRONT ST.



SITE PERSPECTIVE FROM MAIN ST.

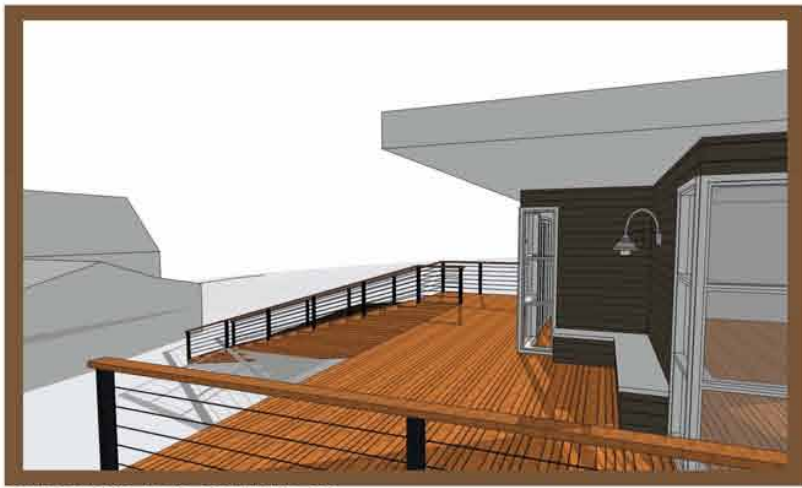


WEST ELEVATION  
SCALE: 1/16 INCH = 1 FOOT





MICHAEL J. PIERCE CAFE



CAFE PATIO AND COURTYARD



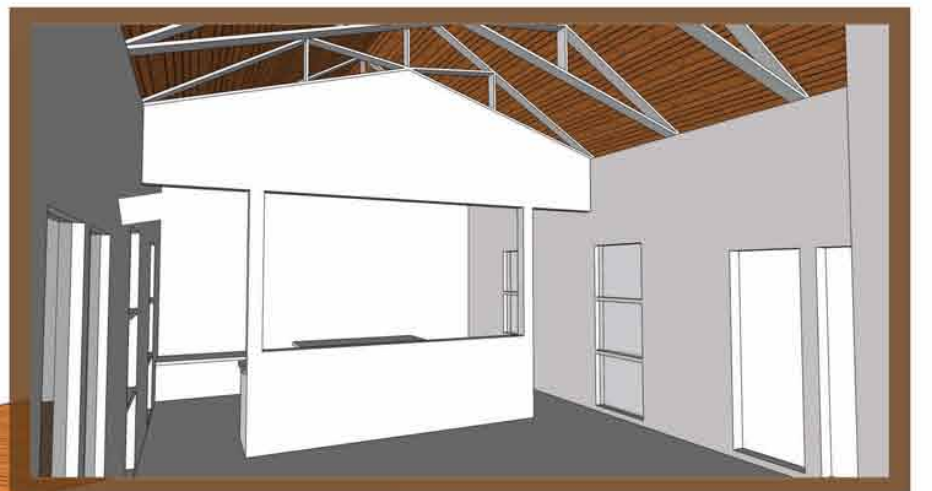
VISITING CENTER INTERIOR PERSPECTIVE



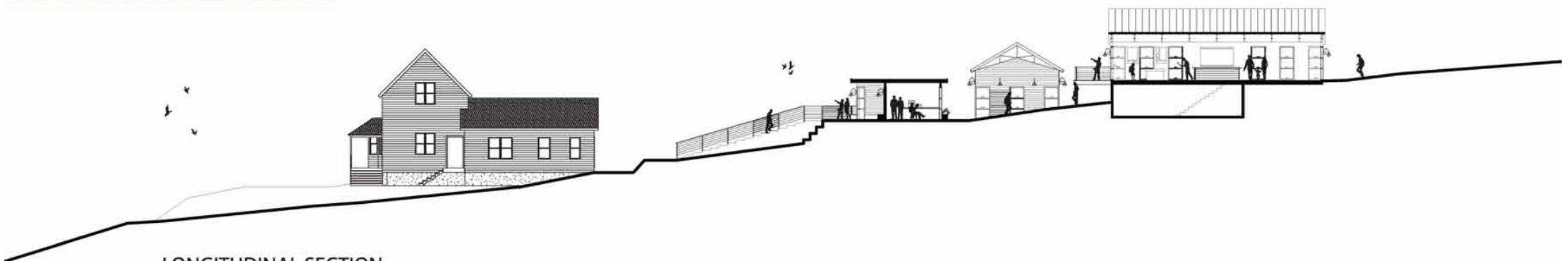
NATIONAL PARK VISITING CENTER



RECREATIONAL HALL ANNEX



REC HALL INTERIOR PERSPECTIVE



LONGITUDINAL SECTION  
SCALE: 1/16 INCH = 1 FOOT