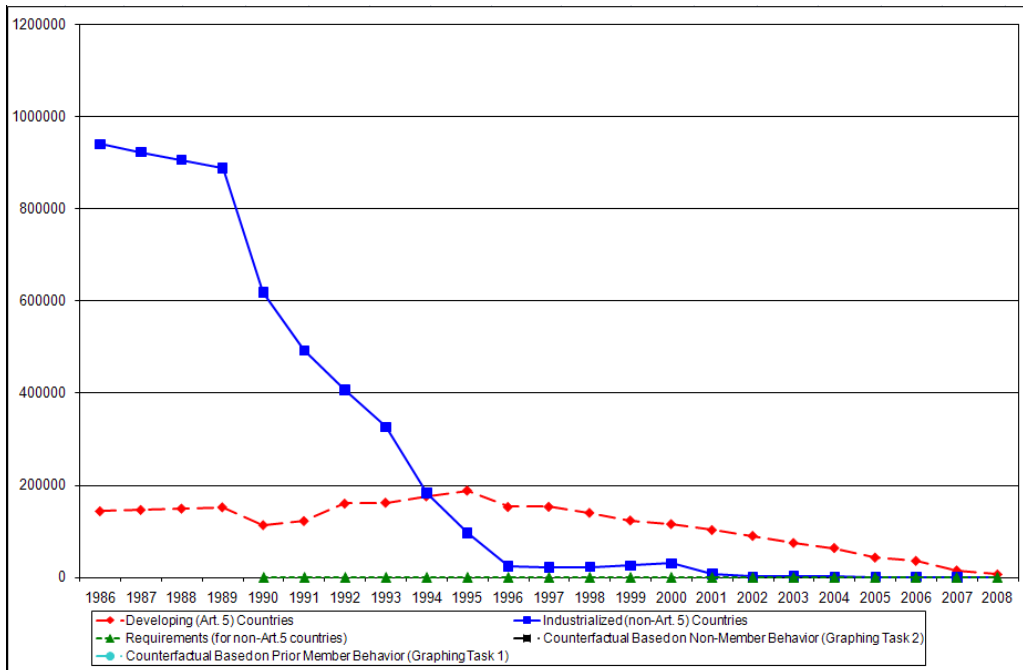


Lecture #12
10 February 2011
Copyright: Ronald B. Mitchell, 2011

- I. Introduction
- II. DISCUSSION OF RELATIVE EFFECTIVENESS OF REGIMES
 - A. Compare the experience of the whaling and ozone protection regimes.
 - B. What are the proper metrics of effectiveness?
 - C. What were the effects of each treaty?
 - D. How do we distinguish "effects of the treaty" from "changes in the thing the treaty was trying to effect"?
 - E. Which regime has been more effective at influencing behavior?
 - F. Which has been more effective at achieving its goals?
 - G. What was the relative difficulty of the tasks the two regimes faced?
 - H. In evaluating the relative effectiveness of these two conventions, which regimes accomplishments strike you as more impressive?
- III. If you see one regime as more effective than the other, to what do you attribute its success?
 - A. If they were equally effective or ineffective, to what do you attribute the similarity in these outcomes?
- IV. Montreal Protocol



V. Whaling agreement

