



# **Campus Planning Committee Presentation**

---

February 16, 2012

# University of Oregon Student Recreation Center Addition Creative Brief

## Goals:

- Unify the series of buildings that comprise the existing SRC
- Dovetail into the existing character of the Student Recreation Facility and campus vernacular by creating strong relationships of the following:
  - Framed openings prevalent on campus in particular Esslinger and the SRC addition
  - Prominent facades of Gerlinger, Straub, and the SRC addition
  - SRC addition rhythm of openings, texture, material, datum's, and detail
- Follow the global campus character guidelines of the following:
  - High Quality
  - Human Scaled
  - Carefully Detailed
  - Building Meets the Sky
  - Rhythm of Windows
  - Secondary Entrance
  - Operable Windows and Window Details
  - Composition...Base, Body, Cap
  - Details
- Honest expression of building use and function.
  - This building is an active, dynamic student Hub. Although much of the building responds to the immediate and global campus vernacular, special attention was given to the need for transparency to entice student use and portray its active nature. A prominent east face captivates this transparency and eastern view. This east face balances the prominent existing SRC gable end and expresses the interior circulation and movement from the west interior "Main Street" corridor toward the eastern view. Sensitive detail is given to the glass façade creating relationships of rhythm of openings, prominent datum's, materials, and sun control.
- Patterns:
  - Architectural Style (campus pattern)
  - Dynamic Building (User group generated pattern)



# CPC Discussion Points & Response

---

•Ensure that the project’s exterior design does not result in a series of fragmented buildings, in particular in the context of the existing SRC facility, Esslinger Hall, and the EMU

RESPONSE: The proposed design unifies the multiple buildings and styles. It keys on important Esslinger details, while well balancing the massive east façade of the SRC proper. The massing and scale of the elements in the proposed design create this beneficial unification.

•Strongly consider integrating solar-heated water to take advantage of the roof space and south-facing orientation. Also, provide an educational element for the students in the building (similar to the existing display)

RESPONSE: Will do. The current design uses few sloping roof forms (it is better that way for the balance, scale and character of the elevations) so we will employ strategies to achieve solar-heated water on the large open flat roof areas – all in addition to the passive solar strategies for natural daylighting, solar orientation, etc. The solar-heated water systems can readily be used for educational / informational purposes along with similar information for the cistern, lighting systems, etc. – much of this still needs to be flushed out.

•Better define the east entry; the proposed deep recess is not adequate.

RESPONSE: Agreed. This entrance has been widened and improved to provide better visual access! The framed opening in the proposed design was incorporated to make strong relationships to the SRC and Esslinger while conveying an intuitive, welcoming entrance. Weather protection is afforded via overhead canopy.

•Ensure that the east façade fits into the fabric of the campus’s design and function. As designed, the proposed shape is not found on campus. Use the existing 15<sup>th</sup> Avenue façade as an example of how the design should connect to the broader campus and Esslinger Hall thru the use of materials, a main entry, façade definition, and roof shape.

RESPONSE: Understood. In this revised / proposed design you will see important new sensitivity to materials, entries, façade definition and roof shape. The 15<sup>th</sup> Avenue façade was used as a springboard for the east façade. The roof shape has been significantly modified, as requested – a flatter profile which is prominent on campus. The proposed shape is an honest expression of student use and interior activities in the building – you will see much movement inside. Precedence for this design can readily be found in campus buildings like the EMU “fishbowl” and Lillis atrium.

•Reassess the design and function of the east façade’s angled cantilever of the pathway. As designed, it does not seem to relate to the fabric of campus, and it only partially covers the proposed seating area. Recognize the range of important function the covered space serves and determine how best to address the key functions (consider moving bike parking out of this area).

RESPONSE: The revised design has been crafted to reflect these concerns, while also clearly reflecting a primary goal of this project . . . An honest expression of student-centered recreational use, being something clearly distinct from primary academic space. The University has a nicely diverse palette of materials, details, and shapes upholding the Campus Character guidelines of high quality, human scale, and careful detailing. There is an opportunity in this new addition to express the student nature of this facility (a campus life facility!), while maintaining all of its other important attributes. The cantilever edge engages the east playing fields, the bike path, and focuses on the expansive view to the northeast, bookended by the Hayward Field west grandstands. In this revised design the seating area has been significantly expanded – it works much better now.

•Carefully define how best to provide bike access on the north/south pathway (consider bicyclists traveling on the path and bike parking).

RESPONSE: Strategies to address this item are currently being addressed by the design team, led in this area and discipline by Cameron McCarthy. We are excited to show you the results of this work when it is ready for viewing.

•Maintain the focus on improving the north/south pathway

RESPONSE: Strategies to address this item are currently being addressed by the design team, led in this area and discipline by Cameron McCarthy. We are excited to show you the results of this work when it is ready for viewing.

•Thoughtfully consider how to use open-space enhancement funds (refer to further discussion...)

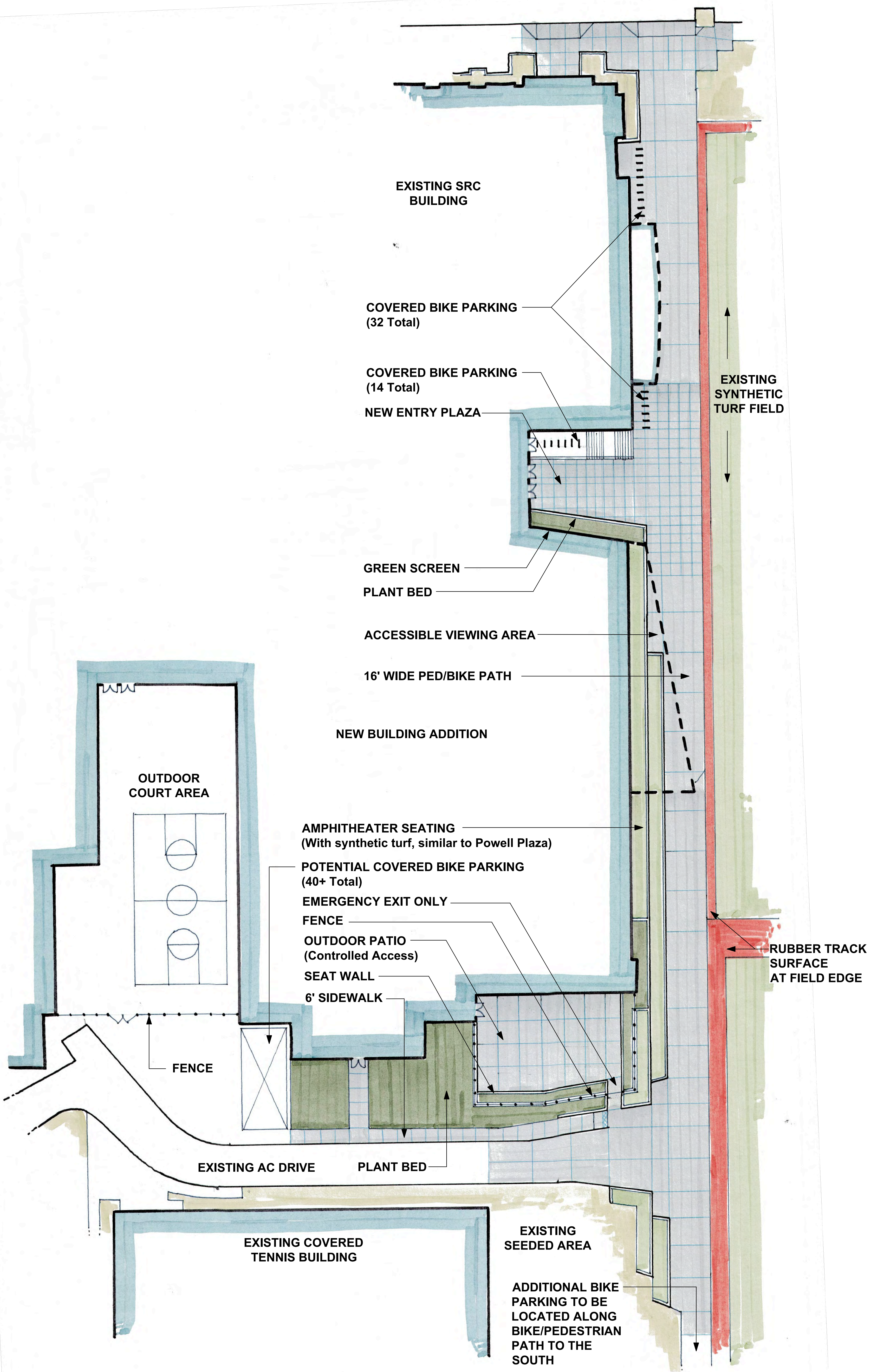
RESPONSE: Strategies to address this item are currently being addressed by the design team, led in this area and discipline by Cameron McCarthy. We are excited to show you the results of this work when it is ready for viewing.

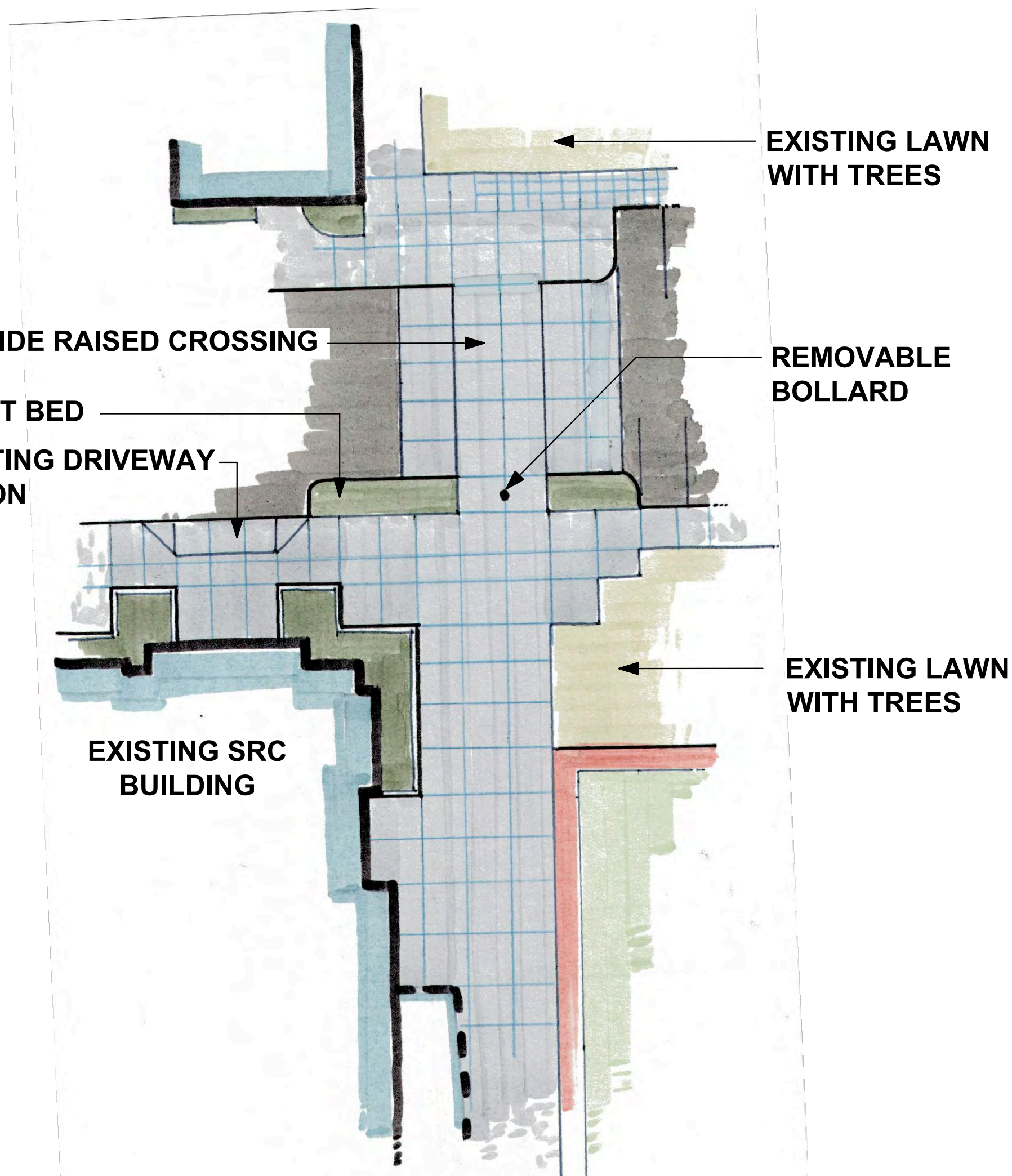


# East Elevation

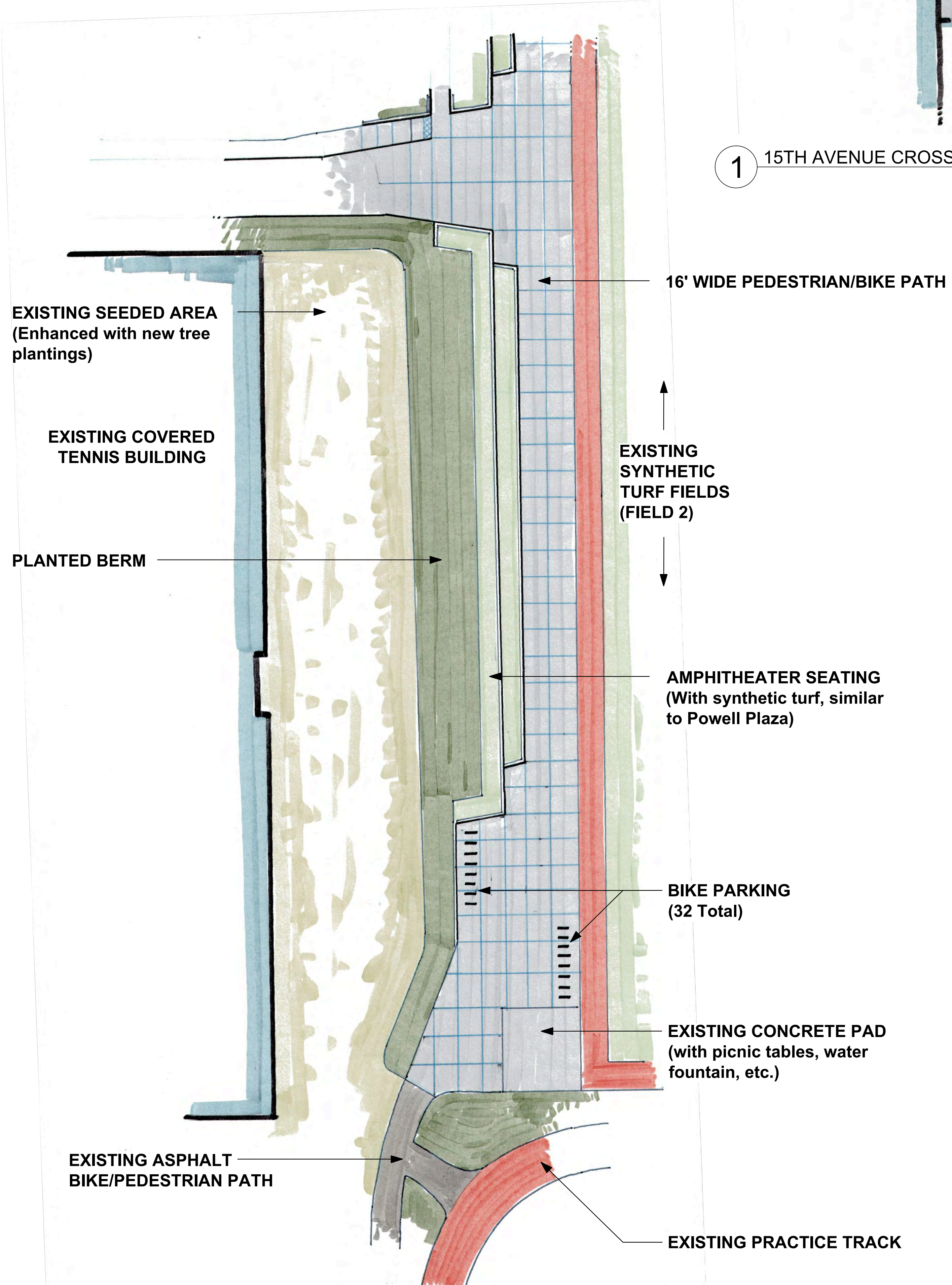
---





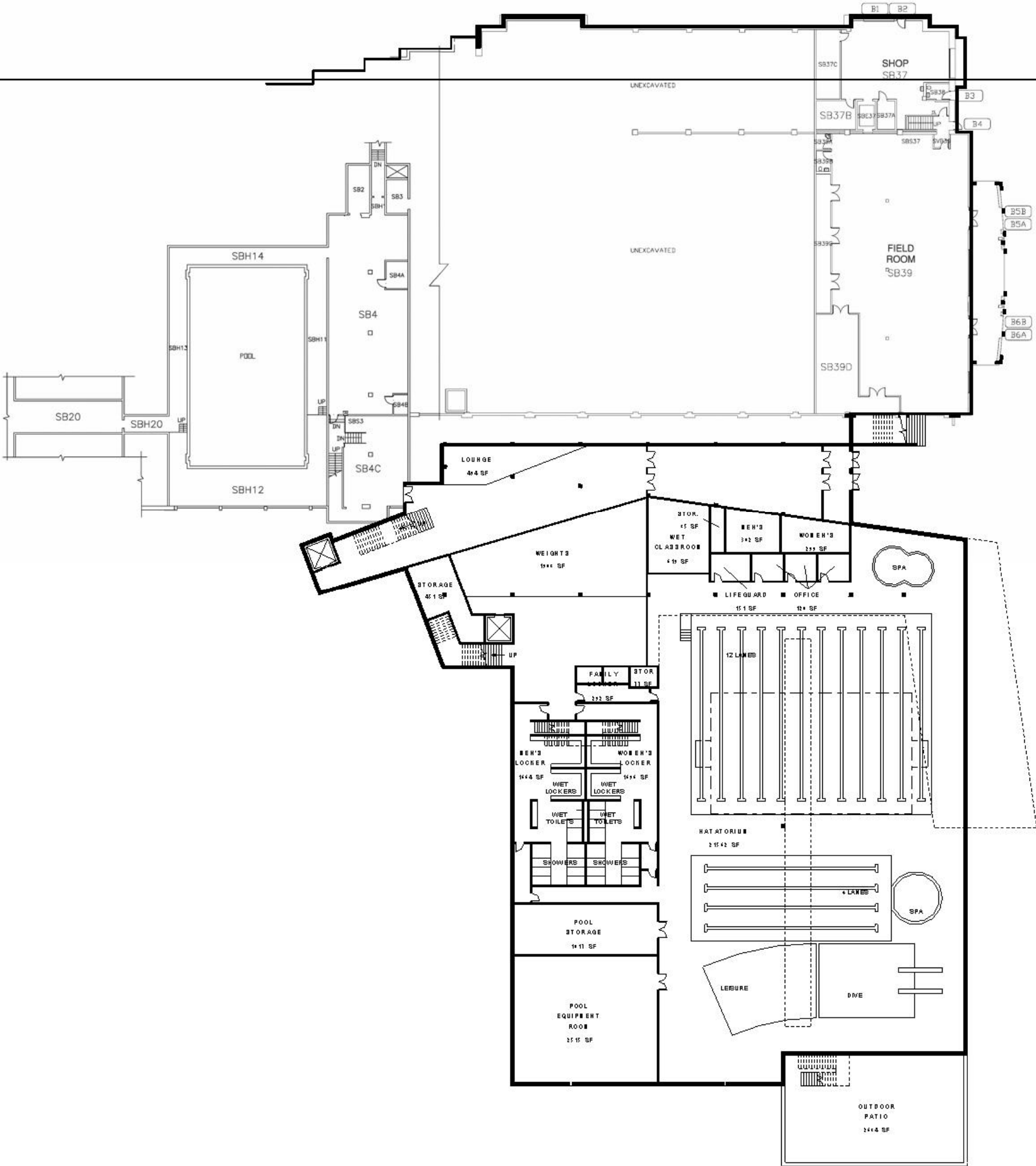


1 15TH AVENUE CROSSING OPTION

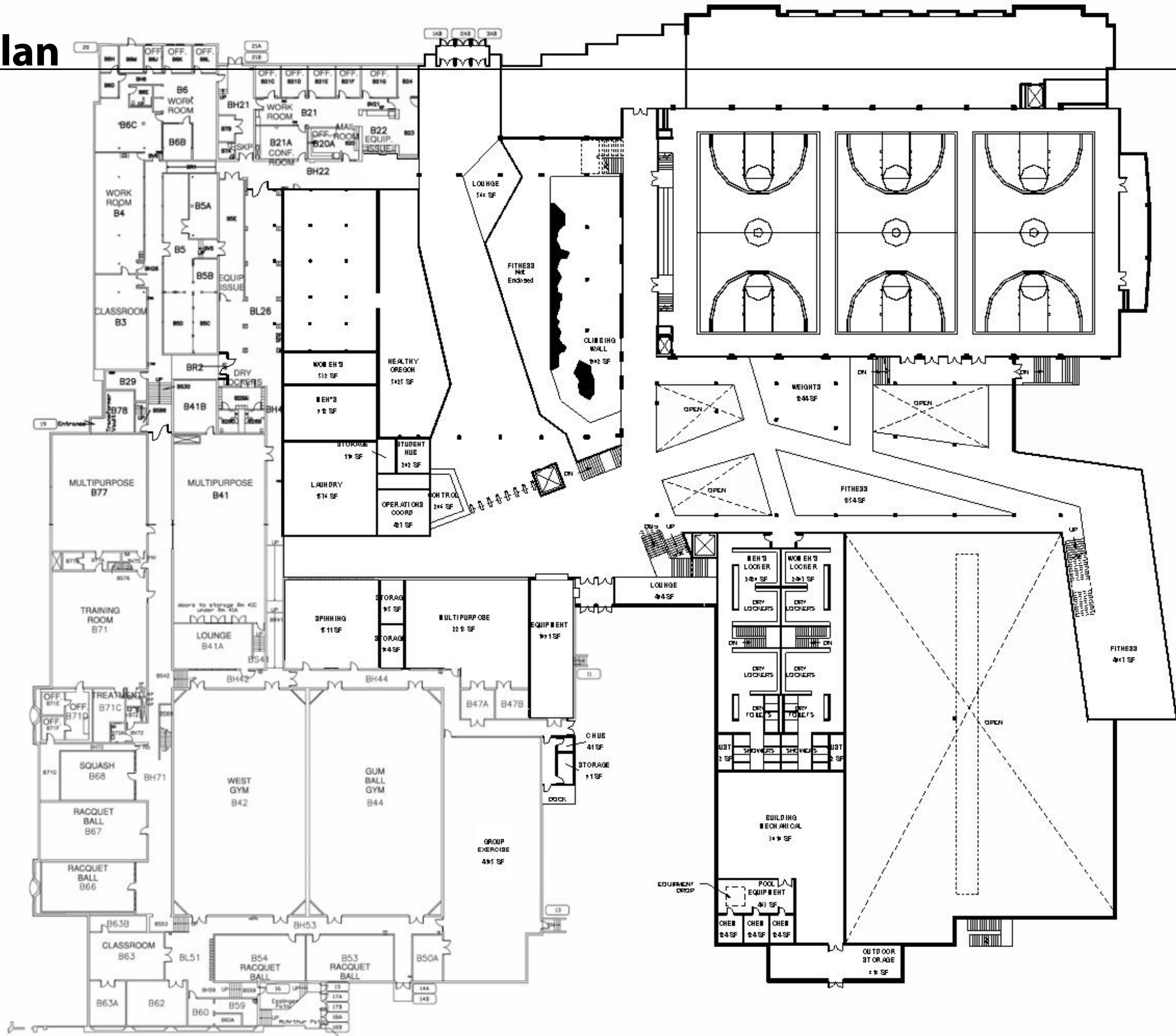


2 SOUTH BIKE/PEDESTRIAN PATH OPTION

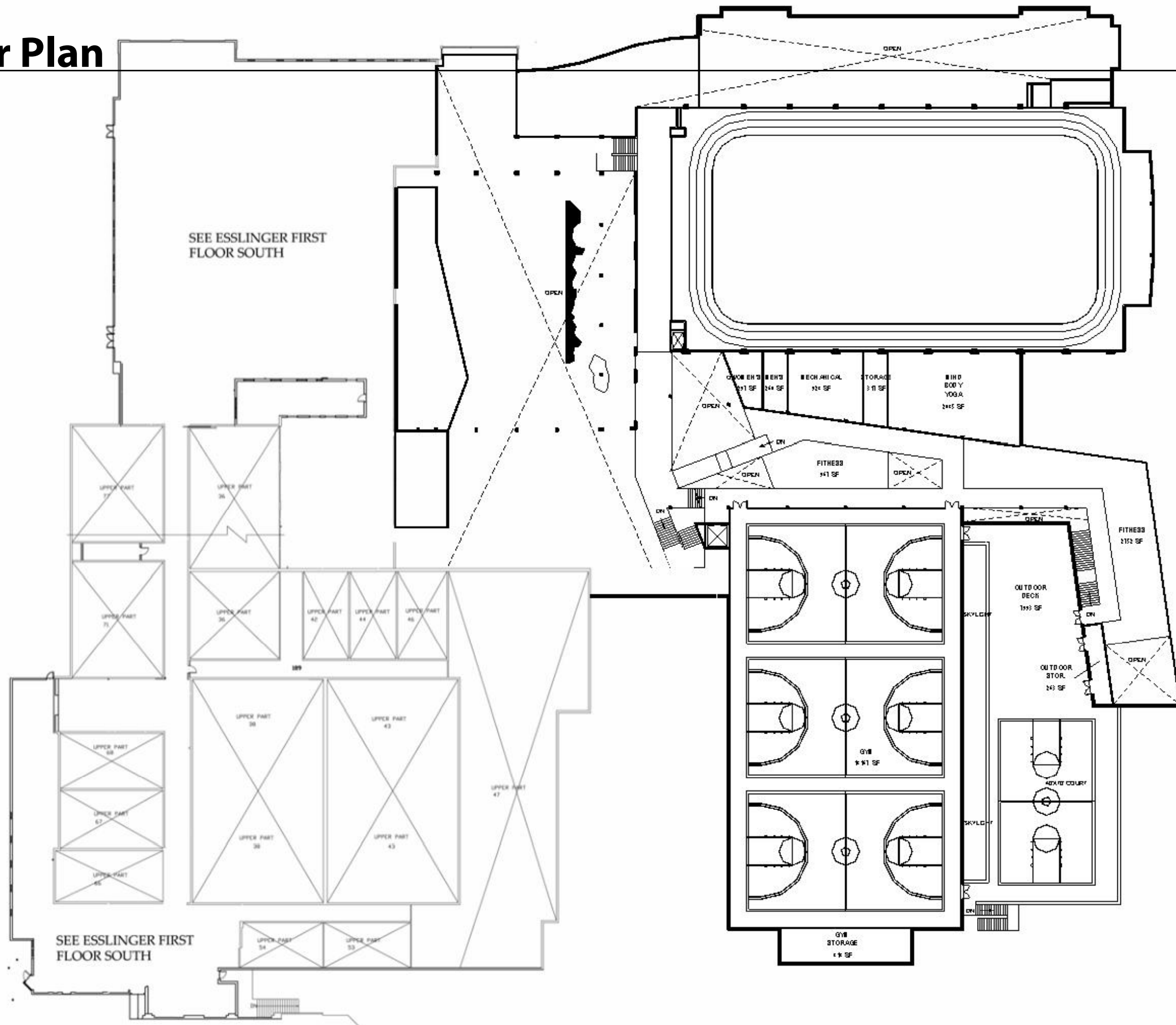
# Lower Floor Plan



# Main Floor Plan



## Upper Floor Plan



**Student Recreation Center Expansion Project**

