

1793 Columbia Street Eugene, OR 97403

Robertson Sherwood Architects pc

www.robertsonsherwood.com

P 541 | 342-8077 F 541 | 345-5302

192 East Broadway, Suite 540 Eugene, Oregon 97401

UO Housing Central Kitchen & Woodshop

ALLIANT SYSTEMS CONSULTANTS

1480 NW 16TH PL, STE 630 BEAVERTON, OR 97006 PHONE: 503.616-4000 FAX: 503.226-9238 WWW.ALLIANTSYSTEMS.COM

PLUMBING COVER SHEET

Drawn By RC Checked AF Date 7 NOV 2014 Project 1407

P0.0

PLUMBING SYMBOL LEGEND

Table with 3 columns: SYMBOL, ABBREVIATION, DESCRIPTION. Lists plumbing symbols and their corresponding abbreviations and descriptions.

PLUMBING PIPING LEGEND

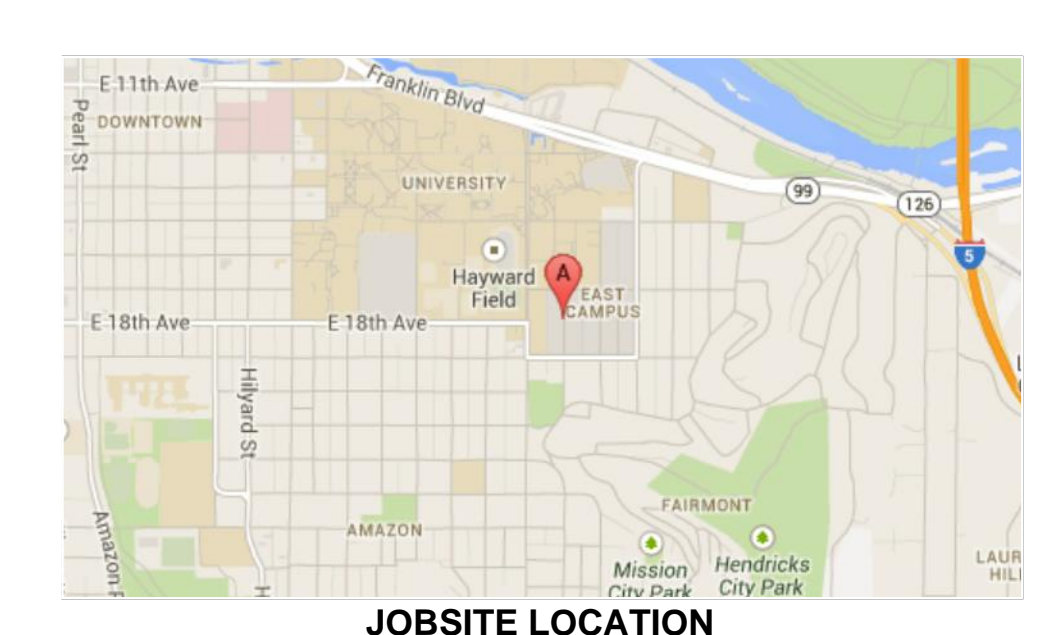
Table with 3 columns: SYMBOL, ABBREVIATION, DESCRIPTION. Lists piping symbols and their corresponding abbreviations and descriptions.

PLUMBING ABBREVIATIONS

Table with 4 columns: ABBV, FULL NAME, ABBV, FULL NAME. Lists plumbing abbreviations and their full names.

PLUMBING GENERAL NOTES - OREGON STATE

- COMPLIANCE
1. MATERIALS, METHODS, AND INSTALLATION SHALL COMPLY WITH THE PROVISIONS OF THE 2014 OREGON PLUMBING CODE (2012 UNIFORM PLUMBING CODE W/ STATE OF OREGON AMENDMENTS) AS WELL AS ALL ADDITIONAL APPLICABLE LOCAL CODES AND STANDARDS.
2. PIPING AND EQUIPMENT HANGERS AND SUPPORTS SHALL BE IN ACCORDANCE WITH SECTION 314 OF THE 2014 OREGON PLUMBING CODE.
3. PIPES SHALL BE SUPPORTED AND BRACED PER SMACNA GUIDELINES FOR SEISMIC RESTRAINTS OF MECHANICAL SYSTEMS AND PLUMBING PIPING SYSTEMS. PROVIDE EARTHQUAKE SWAY BRACING AT 40' INTERVALS FOR ALL PIPING WHICH IS 2 1/2" AND LARGER WHICH HAVE HANGERS THAT EXCEED 12' IN LENGTH.
4. SLOPE ALL RAIN LEADER, STORM, AND WASTE PIPING AT MINIMUM 2% UNLESS OTHERWISE NOTED ON DRAWINGS. OBTAIN APPROVAL FROM CODE AUTHORITY BEFORE INSTALLING PIPING AT LESS THAN 2%.
5. ALL EQUIPMENT SHALL BE INSTALLED IN STRICT ACCORDANCE WITH THE EQUIPMENT MANUFACTURER'S RECOMMENDATIONS AND APPLICABLE CODES.
6. THE ORIGINAL MANUFACTURER'S LABEL SHALL REMAIN AFFIXED TO ALL PLUMBING EQUIPMENT IN AN UNOBTAINED LOCATION.
7. COMPLETE OPERATING AND MAINTENANCE INFORMATION FOR ALL PLUMBING EQUIPMENT SHALL BE PROVIDED TO OWNER'S REPRESENTATIVE AS PART OF PROJECT CLOSEOUT.
INSTALLATION
8. THESE PLANS ARE SCHEMATIC AND DO NOT SHOW EXACT ROUTING OR EVERY OFFSET WHICH MAY BE REQUIRED. THE PLUMBING CONTRACTOR IS TO COORDINATE WITH ALL OTHER TRADES AND IS TO VERIFY ALL CLEARANCES BEFORE COMMENCING WORK.
9. PROVIDE ALL FITTINGS, TRANSITIONS, VALVES AND OTHER DEVICES REQUIRED FOR A COMPLETE WORKABLE INSTALLATION.
10. TRENCHING, BACKFILLING, AND COMPACTING FOR UNDERGROUND PIPING SHALL BE THE RESPONSIBILITY OF THE PLUMBING CONTRACTOR UNLESS STATED OTHERWISE IN CONTRACT DOCUMENTS.
11. ALL PIPE SIZES NOTED ON DRAWINGS ARE MINIMUMS.
12. PIPING PENETRATIONS OF FIRE RATED WALLS OR FLOORS SHALL BE SLEEVED AND FIRE STOPPED WITH LISTED MATERIALS TO MAINTAIN THE INTEGRITY AND RATINGS OF THE FLOOR OR WALL.
13. REFER TO ARCHITECTURAL DRAWINGS FOR EXACT ROUGH-IN LOCATIONS AND ELEVATIONS OF PLUMBING FIXTURES.
14. PROVIDE LOOSE KEY STOPS OR ANGLE VALVES AT ALL FIXTURES.
15. PROVIDE AUTOMATIC TRAP PRIMERS FOR ALL FLOOR DRAINS. FIXTURES TO BE PRIMED FROM ADJACENT FLUSHMETER TAILPIECE OR DESIGNATED TRAP PRIMER VALVE.
16. PROVIDE DIELECTRIC CONNECTIONS BETWEEN DISSIMILAR METALS. COORDINATE GROUNDING REQUIREMENTS WITH ELECTRICAL CONTRACTOR.
17. CLEANOUTS SHALL BE INSTALLED SO THEY ARE EASILY ACCESSIBLE FROM FINAL CONSTRUCTION AREAS.
18. PLUMBING EQUIPMENT, VALVES AND TRAP PRIMERS SHALL BE LOCATED IN EASILY ACCESSIBLE LOCATIONS.
COORDINATION
19. THROUGH PENETRATIONS OF RATED ASSEMBLIES SHALL BE PROTECTED BY AN APPROVED PENETRATION STOP SYSTEM INSTALLED AS TESTED IN ACCORDANCE WITH ASTM E814 OR UL 1479, AND SHALL HAVE AN 'F' RATING OF NOT LESS THAN THE REQUIRED RESISTANCE RATINGS OF THE ASSEMBLY PENETRATED (PER OSSC 714.3.2).
20. WHERE WALLS OR PARTITIONS ARE REQUIRED TO HAVE A FIRE-RESISTANCE RATING, RECESSED FIXTURES SHALL BE INSTALLED SUCH THAT THE REQUIRED FIRE RESISTANCE WILL NOT BE REDUCED (PER OSSC 714.3.2).
21. A LICENSED OREGON JOURNEYMAN SHALL MAKE ALL PLUMBING INSTALLATIONS, ALTERATIONS, OR REMODELING IN A COMMERCIAL BUILDING WITH AN APPROVED PERMIT (OAR 918-695-0020)
22. FLUSH CONTROLS FOR WATER CLOSETS SHALL BE HAND OPERATED OR AUTOMATIC AND BE MOUNTED FOR USE FROM THE WIDE SIDE OF THE AREA OR STALL AND NOT MORE THAN 44 INCHES ABOVE THE FLOOR (PER OSSC CHAPTER 11 AND ICC A117.1).
23. WATER PIPING AND DRAIN PIPES EXPOSED UNDER LAVATORIES SHALL BE INSULATED, OR OTHERWISE COVERED. THERE SHALL BE NO SHARP OR ABRASIVE SURFACES EXPOSED (PER OSSC CHAPTER 11 AND ICC A117.1)
24. UNLESS SHOWN ON ARCHITECTURAL DRAWINGS, REQUIRED ACCESS PANELS SHALL BE PROVIDED BY THE PLUMBING CONTRACTOR AND INSTALLED BY THE GENERAL CONTRACTOR.
25. THE PLUMBING CONTRACTOR SHALL PROVIDE AND LOCATE ALL REQUIRED FLOOR, WALL, AND FOOTING SLEEVES.
26. COORDINATE PLUMBING SYSTEMS WITH WORK OF OTHER TRADES PRIOR TO ANY FABRICATION OR INSTALLATION.
27. COORDINATE LOCATIONS OF ALL ROOF OPENINGS WITH STRUCTURAL, MECHANICAL AND ARCHITECTURAL PLANS PRIOR TO ANY INSTALLATION.
28. UNLESS NOTED OTHERWISE, HOUSEKEEPING PADS SHALL BE COORDINATED BY PLUMBING CONTRACTOR AND FURNISHED BY GENERAL CONTRACTOR. ALL HOUSEKEEPING PADS SHALL BE MINIMUM 4 INCHES HIGH AND EXTEND A MINIMUM OF 6 INCHES BEYOND EQUIPMENT.
29. UNLESS NOTED OTHERWISE, PLATFORMS, CURBS AND FLASHINGS FOR PLUMBING EQUIPMENT SHALL BE COORDINATED BY PLUMBING CONTRACTOR AND FURNISHED BY GENERAL CONTRACTOR. DETAIL SHALL BE AS INDICATED ON THE STRUCTURAL AND ARCHITECTURAL PLANS, UNLESS NOTED OTHERWISE.
30. COORDINATE EXACT SIZES OF REQUIRED OPENINGS AND SUPPORTS FOR FURNISHED EQUIPMENT WITH ARCHITECT, STRUCTURAL AND GENERAL CONTRACTOR.



PROJECT SHEET INDEX

Table with 3 columns: SHEET NUMBER, SHEET TITLE, SHEET TITLE. Lists project sheet numbers and titles.

PLUMBING FIXTURE UNIT CALCULATION											
FIXTURE DESCRIPTION	QUANTITY	DRAINAGE UNITS GREASE WASTE		DRAINAGE UNITS SANITARY WASTE		COLD WATER UNITS		HOT WATER UNITS			
		EACH	TOTAL	EACH	TOTAL	EACH	TOTAL	EACH	TOTAL		
BUILDOUT (THIS PERMIT)											
WATER CLOSET-FLUSH VALVE - 1.28 GPF - PUBLIC	5	-	-	4	20	5	25	-	-		
SINK - 1.5 GPM	2	-	-	2	4	2	4	1.5	3		
LAVATORY - 0.5 GPM	5	-	-	1	5	1	5	0.75	3.75		
SERVICE SINK/JANITOR SINK - 2.5 GPM	1	3	3	-	-	3	3	2.25	2.25		
SHOWER-PER HEAD/DRAIN - 1.75 GPM	1	-	-	2	2	2	2	1.5	1.5		
HOSE BIBB/WALL HYDRANT-1ST	1	-	-	-	-	2.5	2.5	1.875	1.875		
HOSE BIBB/WALL HYDRANT-ADDITIONAL	8	-	-	-	-	1	8	0.75	6		
HANDWASHING STATION	13	1	13	-	-	2	26	1.5	19.5		
PREP SINK	6	TO FS	-	-	-	2	12	1.5	9		
POT FILLER/KETTLE	8	TO FS	-	-	-	3	24	2.25	18		
3-COMPARTMENT SINK	1	TO FS	-	-	-	3	3	2.25	2.25		
DISHMACHINE	1	TO FS	-	-	-	-	-	-	-		
FLOOR DRAIN 2"	22	2	44	-	-	-	-	-	-		
FLOOR SINK 3"	31	2	62	-	-	-	-	-	-		
FLOOR SINK/TROUGH (ICE WELL)	2	-	-	2	4	-	-	-	-		
FIRE RISER HUB DRAIN 4"	1	-	-	6	6	-	-	-	-		
TOTALS		FIXTURES =	103	WASTE DFU =	122	WASTE DFU =	41	CWSFU	115	HWSFU	67

PLUMBING WATER SUPPLY CALCULATION		
SITE / BUILDING DATA		
MAXIMUM COLD WATER DEMAND	115	FIXTURE UNITS = 71 GPM
KITCHEN, MECHANICAL, EMERGENCY EQUIPMENT MAKEUP	30	GPM
IRRIGATION MAKEUP	3/4"	CONNECTION, SEE LANDSCAPE
TOTAL PEAK DEMAND	101	GPM (PLUS IRRIGATION)
MINIMUM COLD WATER SERVICE MAIN REQUIRED	2-1/2"	COLD WATER SERVICE
BUILDING ELEVATION TO HIGHEST FIXTURE	5	FT
BUILDING ELEVATION AT LOW POINT	0	FT
PRESSURE REQUIRED AT MOST REMOTE FIXTURE	35	PSI (PER MANUFACTURER REQUIREMENTS)
HORIZNOTAL LENGTH OF LONGEST PIPING RUN	250	FT
EQUIVALENT LENGTH (LENGTH X 1.2)	300	FT
CALCULATE WATER PRESSURE FOR HIGHEST FIXTURE		
PRESSURE AT WATER MAIN	71	PSI (BASED ON CITY RECORDS)
PRESSURE DROP THROUGH METER	9	PSI (101 GPM THRU 2" DISC TYPE METER)
PRESSURE DROP THROUGH RPBP	9	PSI
PRESSURE DROP THROUGH PRESSURE REDUCE VALVE	5	PSI
PRESSURE LOSS DUE TO ELEVATION	2.2	PSI (5' ELEVATION X .434 PSI/FT)
PRESSURE TO OPERATE LAST FIXTURE	35	PSI
PRESSURE AVAILABLE FOR PIPE FRICTION	10.8	PSI
MAX PRESSURE LOSS PER 100 FT OF PIPE	3.6	PSI / 100 FT (BASED ON 300' EQUIVALENT)
DESIGN PRESSURE LOSS PER 100 FT OF PIPE	3.0	PSI / 100 FT

GREASE INTERCEPTOR INFORMATION TABLE		
FOOD SERVICE ESTABLISHMENT CONTACT INFORMATION: UO UNIVERSITY HOUSING		
GREASE INTERCEPTOR SIZING CALCULATION:		
TOTAL GREASE DFU's PER FIXTURE UNIT SCHEDULE	120	DFU's
USING 2011 OPSC TABLE 10-3 FOR GRAVITY INTERCEPTOR	1,500	GALLONS - MINIMUM
GREASE PRODUCTION ESTIMATES:		
ESTIMATED MEALS PER DAY	3,000	MEAL/DAY
ESTIMATED GREASE PER MEAL	0.046	LBS/MEAL
WEEKLY GREASE PRODUCTION (5-DAY WEEK)	882.5	LBS
1 MONTH (4.25 WEEK) ESTIMATED GREASE PRODUCTION	2,900.6	LBS
6 MONTHS (26 WEEK) ESTIMATED GREASE PRODUCTION	17,745.0	LBS
G-1 SPECIFICATION:		
OLDCASTLE PRECAST 712-GA-CWS		
2500 GALLON		
7'-11" X 13'-0" X 8'-0"		
(3) 30" DIAMETER GASKETED MANHOLE ACCESS COVERS (BOLT DOWN)		
COORDINATE REQUIREMENT FOR (MAXIMUM 12') EXTENSION COLLARS AT MANHOLE INSTASLLATION		
BASE ASSEMBLY WEIGHT 20,880 LBS; TOP ASSEMBLY WEIGHT 15,830 LBS		
4" INLET, 4" OUTLET		
NOTE: PC TO FURNISH G-1, INSTALLED BY OTHERS.		

PLUMBING PIPING SCHEDULE									
SERVICE	LOCATION	SIZE	PIPE	PIPE MATL STANDARD	FITTINGS	JOINTS	WORKING PRESSURE	TEST PRESSURE	NOTES
DOMESTIC COLD WATER DOMESTIC HOT WATER DOMESTIC HOT WATER CIRCULATION NON-POTABLE COLD WATER	ABOVE GRADE	1/2" - 4"	COPPER TYPE L HARD DRAWN	ASTM B88	WROUGHT COPPER TEE DRILL COPPER, BRASS	WATER SAFE SOLDER BCUP	70 PSIG	100 PSIG	
	BELOW GRADE	1/2" - 1-1/2"	PEX-A	ASTM F876 ASTM F877	LEAD FREE BRASS	UPONOR PRO-PEX	70 PSIG	100 PSIG	APPROVED ONLY FOR BRANCH AND FIXTURE RUNOUTS
SANITARY WASTE	ABOVE GRADE	1-1/4" - 6"	CAST IRON NO-HUB	CISPI 301	NO-HUB CAST IRON	NO-HUB	AMBIENT	5 PSIG	STANDARD DUTY COUPLINGS
	BELOW GRADE	1-1/4" - 3"	COPPER TYPE DWV	ASTM B306	WROUGHT COPPER	WATER SAFE SOLDER BCUP	AMBIENT	5 PSIG	
SANITARY VENT	ABOVE GRADE	1-1/4" - 6"	CAST IRON NO-HUB	CISPI 301	NO-HUB CAST IRON	NO-HUB	AMBIENT	5 PSIG	STANDARD DUTY COUPLINGS
	BELOW GRADE	1-1/4" - 6"	ABS - SCHEDULE 40 (SOLID WALL)	ASTM D1527	ABS - SCHEDULE 40 (SOLID WALL)	SOLVENT WELD	AMBIENT	5 PSIG	NOT APPROVED FOR GREASE WASTE
CONDENSATE DRAINAGE	ABOVE GRADE	1-1/4" - 3"	COPPER TYPE DWV	ASTM B306	WROUGHT COPPER	WATER SAFE SOLDER BCUP	AMBIENT	5 PSIG	
STORM DRAIN	BELOW GRADE	1-1/4" - 4"	ABS - SCHEDULE 40 (SOLID WALL)	ASTM D1527	ABS - SCHEDULE 40 (SOLID WALL)	SOLVENT WELD	AMBIENT	5 PSIG	
TRAP PRIMER	ABOVE GRADE BELOW GRADE	3/8" - 1/2"	PEX-A	ASTM F876 ASTM F877	LEAD FREE BRASS	UPONOR PRO-PEX	70 PSIG	100 PSIG	
COMPRESSED AIR	ABOVE GRADE	1/2" - 2"	BLACK STEEL SCHEDULE 40	ASTM A53	BLACK STEEL SCHEDULE 40	THREADED	100 PSIG	150 PSIG	

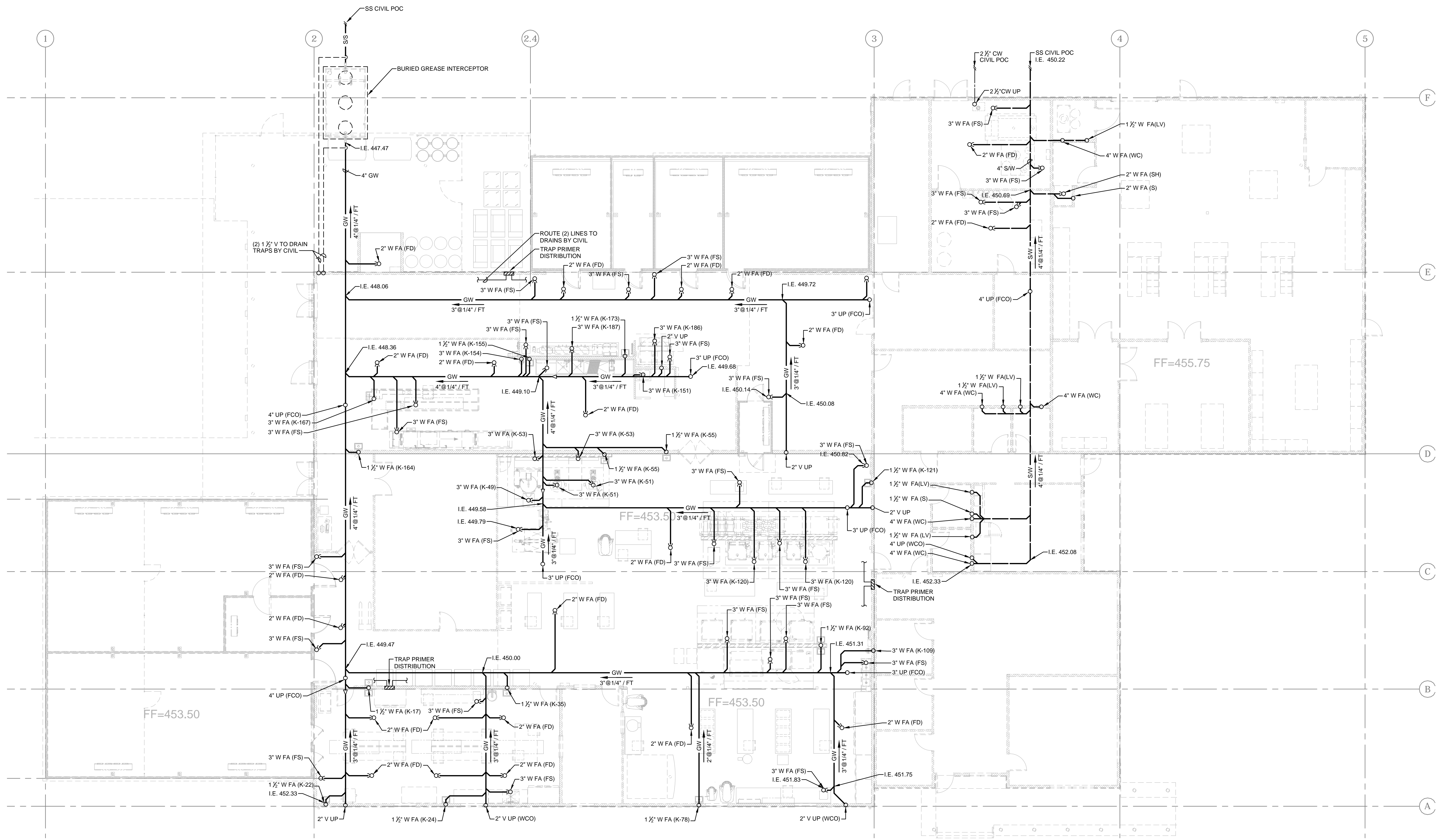
PLUMBING INSULATION SCHEDULE								
INSULATION THICKNESS TABLE:								
SYSTEM	FLUID OPER. TEMP. F	INSULATION TYPE	INSULATION CONDUCTIVITY (BTU/IN/HR-FT ² -F)	MEAN TEMP.	RUNOUTS UP TO 2" LESS THAN 12 FT.	1" AND LESS	1-1/4" - 2"	2-1/2" - 4"
DOMESTIC CW	45-75	FIBERGLASS W/ ASJ	0.24-0.28	55	1/2"	1/2"	1/2"	1/2"
DOMESTIC HWS AND HWR	105-140	FIBERGLASS W/ ASJ	0.24-0.28	115	1/2"	1"	1"	1 1/2"

PLUMBING VALVE SCHEDULE							
SERVICE	SIZE	PIPE	FUNCTION	TYPE	CLASS	MFG	MODEL NO.
DOMESTIC COLD WATER DOMESTIC HOT WATER DOMESTIC HOT WATER CIRCULATION	1/2" - 4"	COPPER	SHUT OFF	BALL VALVE: LEAD FREE 3-PIECE, FULL-PORT, BRONZE CONSTRUCTION	600	APOLLO	82LF140
	1/2" - 2"	COPPER	GATE	GATE VALVE: LEAD FREE, BRONZE CONSTRUCTION	150	APOLLO	106T
	2-1/2" - 4"	COPPER	GATE	GATE VALVE: LEAD FREE, DUCTILE IRON CONSTRUCTION	150	NIBCO	F-639-31
	2-1/2" - 4"	COPPER	SHUT OFF	BUTTERFLY VALVE: LEAD FREE, 10 POSITION HANDLE, DUCTILE IRON CONST	200	APOLLO	LD141
	1/2" - 3"	COPPER	CHECK	SWING CHECK VALVE: LEAD FREE	200	APOLLO	161S-LF
	1/2" - 2"	COPPER	BALANCE	CIRCUIT SETTER BALANCING VALVE	300	GRINNELL	CB800
COMPRESSED AIR	1/2" - 3"	STEEL	SHUT OFF	BALL VALVE	600	APOLLO	89-100
ACCEPTABLE ALTERNATE MANUFACTURERS: HAMMOND, MILWAUKEE							

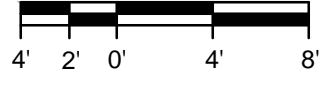
PLUMBING PIPE HANGER SCHEDULE						
HORIZONTAL SPACING:	PIPE SIZE:	1/2" - 3/4"	1" - 1-1/2"	2"	2-1/2" - 3"	4"
COPPER	6 FT	6 FT	10 FT	10 FT	10 FT	
PEX-A W/ PIPE SUPPORT	6 FT	8 FT	8 FT	NA	NA	
STEEL	10 FT	10 FT	12 FT	12 FT	12 FT	
PVC/ABS (SCHED 40)	-	4 FT	4 FT	4 FT	4 FT	
NO HUB CAST IRON PIPE: 10 FT MAX SPACING, MIN (2) HANGERS PER PIPE SECTION WITHIN 18" OF JOINT, MIN (2) HANGERS AT EACH CHANGE OF DIRECTION AND BRANCH FITTING.						
NOTE: FOR PEX-A WITH PIPE SUPPORT, REFER TO DETAIL FOR PIPE SUPPORT REQUIREMENTS						
HANGER SCHEDULE:	PIPE MATERIAL	PIPE SIZE	GALV. ROD	MFG.	FIG.	INSUL SHIELD
	COPPER	1/2" - 3"	3/8"	ANVIL	CT-69	167
	PEX-A W/ PIPE SUPPORT	1/2" - 2"	3/8"	ANVIL	CT-69	NA
	STEEL	1/2" - 2"	3/8"	ANVIL	CT-69	167
	PVC/ABS (SCHED 40)	1/2" - 2"	3/8"	ANVIL	CT-69	NA
	CAST IRON	1-1/2" - 4"	3/8"	ANVIL	CT-69	NA

PLUMBING IDENTIFICATION AND PIPE LABELING SCHEDULE				
PIPE LABELLING				
SERVICE	SYMBOL	MARKER	MARKER COLOR	TEXT COLOR
DOMESTIC COLD WATER	CW	COLD WATER	GREEN	WHITE
DOMESTIC HOT WATER SUPPLY	HWS	HOT WATER SUPPLY	GREEN	WHITE
DOMESTIC HOT WATER RECIRCULATED	HWR	HOT WATER RECIRCULATED	GREEN	WHITE
SANITARY WASTE	W	WASTE	GREEN	WHITE
SANITARY GREASE WASTE	GW	GREASE WASTE	GREEN	WHITE
SANITARY VENT	V	VENT	GREEN	WHITE
COMPRESSED AIR	CA	COMPRESSED AIR	BLUE	WHITE
NOTES: 1. INSTALL LABEL ON PIPING MAINS EVERY 20 FT AND AT ALL EQUIPMENT CONNECTIONS 2. WRAP PIPING LABEL END WITH FLOW ARROW TAPE AROUND PIPE. 3. LABEL PIPING WITHIN 3 FT OF EACH SHUT OFF VALVE, WALL/FLOOR PENETRATION, BRANCH TAKE OFF.				
EQUIPMENT IDENTIFICATION:				
1. BLACK PLASTIC NAME PLATE WITH WHITE ENGRAVED LETTERS. 2. MINIMUM 1/2" HIGH LETTERS WITH EQUIPMENT TAG DESIGNATION. 3. INSTALL TO EQUIPMENT WITH ADHESIVE, RIVETS, CHAIN, OR QUICK TIES.				
VALVE TAGGING:				
1. TAG CONTROL VALVES AND BUILDING MAIN SHUTOFF VALVES. 2. 1-1/2" DIAMETER BRASS VALVE TAG WITH STAMPED LETTERS ON CHAIN. 3. STAMP CONTROL VALVE NUMBER AND/OR PIPING SYSTEM SERVICE SYMBOL.				

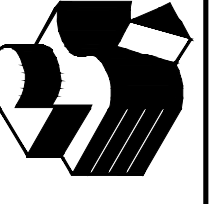




1 PLUMBING UNDERGROUND PLAN
 P2.0 1/8"=1'-0"



C.M.P.
 CONFORMED SET-
 Not For
 Construction



Robertson Sherwood Architects pc

132 East Broadway, Suite 540
 Eugene, Oregon 97401
 P 541 | 342-8077
 F 541 | 345-3302
 www.robertsonsherwood.com

UO Housing Central Kitchen & Woodshop

1793 Columbia Street
 Eugene, OR 97403

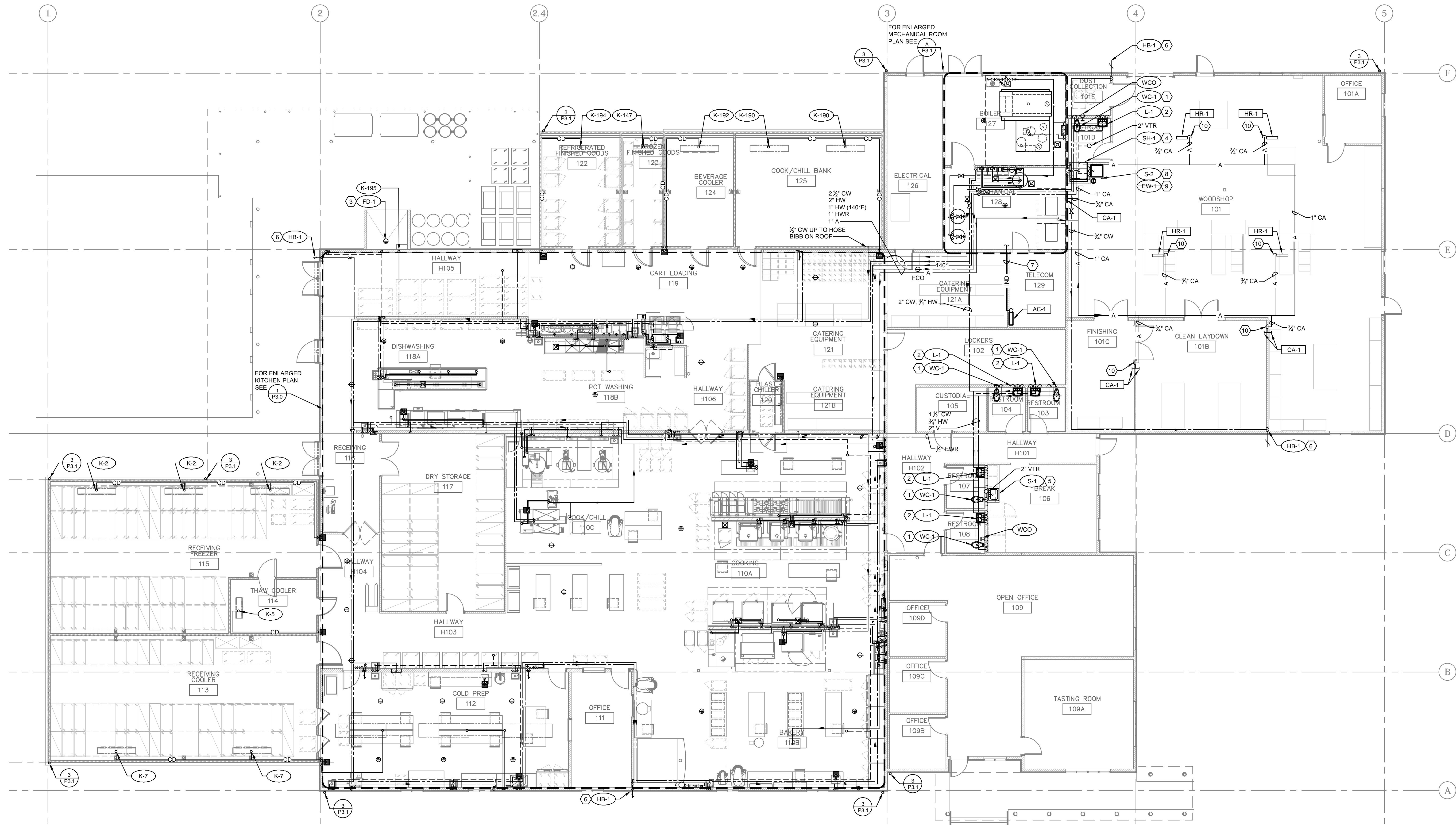


ALLIANT SYSTEMS
 1800 NW 26TH PL, STE 530
 BEAVERTON, OR 97006
 PHONE: 503.619.4000
 FAX: 503.239.9238
 WWW.ALLIANTSYSTEMS.COM
 CCB# 153428

PLUMBING
 UNDERGROUND
 PLAN

Drawn By	RC
Checked	AF
Date	7 NOV 2014
Project	1407

P2.0



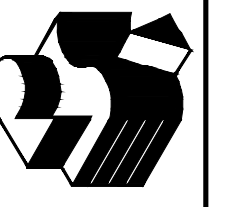
PLUMBING NOTES BY SYMBOL	
(1)	WATER CLOSET - 1" CW, 2" V DN, 4" W UP TO WALL MOUNTED FIXTURE.
(2)	LAVATORY - 1/2" CW, 1/2" HW, 1 1/2" V DN, 1 1/2" W UP TO WALL MOUNTED FIXTURE.
(3)	FLOOR DRAIN - 3/4" TRAP PRIMER LINE DN, 2" W UP TO FIXTURE MOUNTED IN SLAB.
(4)	SHOWER - 1/2" HW, 1/2" CW, 1 1/2" V DN, 2" SW UP TO SHOWER
(5)	SINK - 1/2" CW, 1/2" HW, 1 1/2" V DN, 1 1/2" W UP TO COUNTER MOUNTED FIXTURE
(6)	HOSE BIBB - 1/2" CW DN TO WALL MOUNTED FIXTURE.
(7)	1" INDIRECT DRAIN. ROUTE FROM AC-1 ALONG WALL UP HIGH IN CATERING EQUIPMENT ROOM TO FLOOR SINK IN MECHANICAL ROOM AND TERMINATE WITH APPROVED AIR GAP.
(8)	SINK - 1/2" CW, 1/2" HW, 1 1/2" V DN, 1 1/2" W UP TO WALL MOUNTED FIXTURE
(9)	EYEWASH - WALL MOUNTED. PROVIDE SERVICE VALVE AND EXTEND 1/2" CW TO EYEWASH FIXTURE. COORDINATE FINAL LOCATION W/ ARCHITECT AND INSTALLATION W/ GC / CABINET SUB-CONTRACTOR.
(10)	1/2" COMPRESSED AIR DN TO WOODSHOP EQUIPMENT HR-1. PER EQUIPMENT SCHEDULE ON P.0.2.

1 PLUMBING FIRST FLOOR PLAN
 P2.1 1/8"=1'-0"
 4' 2' 0" 4' 8"

Robertson Sherwood Architects pc 132 East Broadway, Suite 540 Eugene, Oregon 97401 P 541 342.8077 F 541 345.3302 www.robertsonsherwood.com		C.M.P. CONFORMED SET- Not For Construction
ALLIANT SYSTEMS ALLIANT SYSTEMS, LLC 1400 NW 26TH PL, STE 530 BEAVERTON, OR 97006 PHONE: 503.619.4000 FAX: 503.239.9238 WWW.ALLIANTSYSTEMS.COM CCB# 153428		
Drawn By: RC Checked: AF Date: 7 NOV 2014 Project: 1407	PLUMBING FIRST FLOOR PLAN	
P2.1		

PLUMBING NOTES BY SYMBOL	
①	1" CONDENSATE DRAIN, SEE DETAIL 8/P3.1
②	EVAPORATIVE COOLER MAKEUP-WATER AND DRAIN CONNECTIONS, SEE DETAIL 8/P3.1.

C.M.P.
CONFORMED SET-
Not For
Construction



Robertson Sherwood Architects pc
132 East Broadway, Suite 540
Eugene, Oregon 97401
P: 541 | 342.8077
F: 541 | 345.3302
www.robertsonsherwood.com

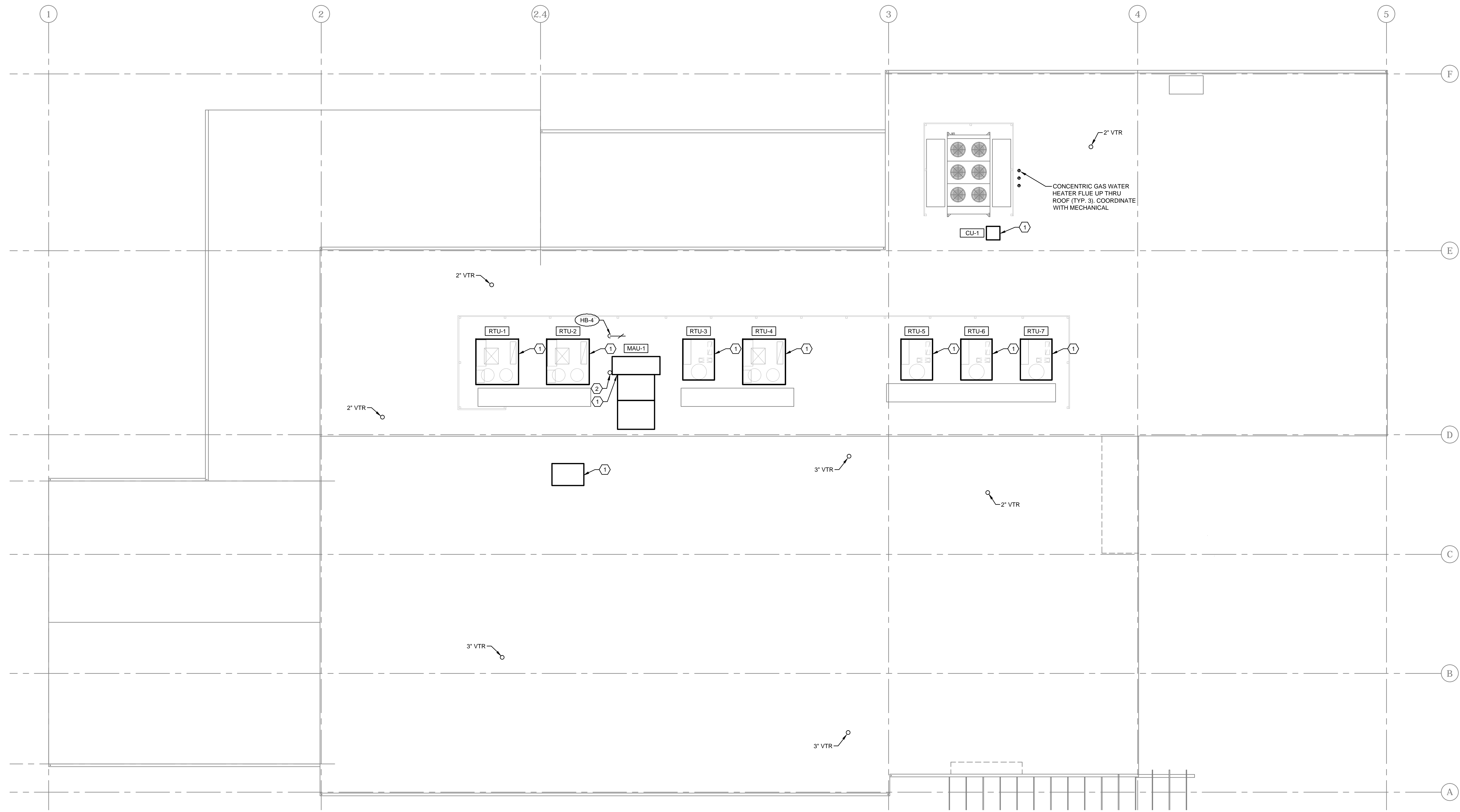
1793 Columbia Street
Eugene, OR 97403

ALLIANT
MECHANICAL SYSTEMS
1800 NW 85TH PL, STE 530
BEAVERTON, OR 97006
PHONE: 503.618-4000
FAX: 503.238-9238
WWW.ALLIANTSYSTEMS.COM
CCBA-153428

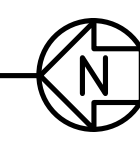
PLUMBING
ROOF
PLAN

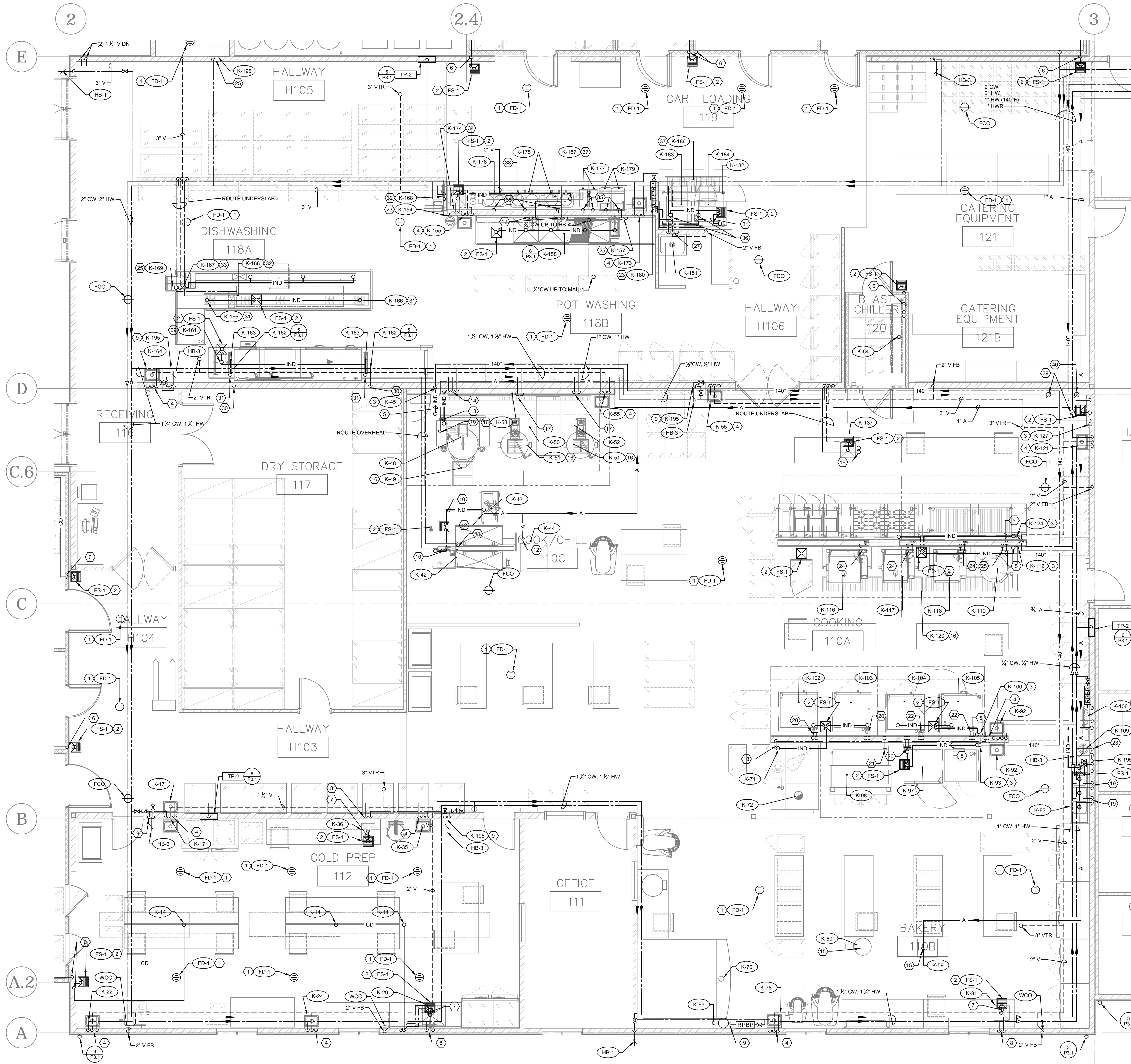
Drawn By	RC
Checked	AF
Date	7 NOV 2014
Project	1407

P2.R



1
P2.R
PLUMBING ROOF PLAN
1/8"=1'-0"
4' 2' 0' 4' 8'





1 PLUMBING ENLARGED KITCHEN PLAN
 P3.0 1/4"=1'-0"
 1 2 3 4

PLUMBING NOTES BY SYMBOL	
1	FLOOR DRAIN - 3/4" TRAP PRIMER LINE DN, 2" W UP TO FIXTURE MOUNTED IN SLAB.
2	FLOOR SINK - 3" W UP TO FIXTURE MOUNTED IN SLAB.
3	1" HW 140" FROM HOOD CONTROL PANEL TO SERVE WATER WASH CONTROL BOX AT EACH HOOD, MOUNTED OVERHEAD.
4	3/4" CW, 1/2" HW, 1 1/2" V DN, 1 1/2" W UP TO SERVE KITCHEN EQUIPMENT CONNECTIONS PER SCHEDULE ON P0.2.
5	2" INDIRECT DRAIN FROM HOOD EXHAUST DN TO FLOOR SINK.
6	1" COIL CONDENSATE DRAIN DN IN WALL, TERMINATE WITH APPROVED AIR GAP AT FLOOR SINK.
7	2" INDIRECT DRAIN, ROUTE BELOW COUNTER, TERMINATE WITH APPROVED AIR GAP AT FLOOR SINK.
8	3/4" CW AND 1/2" HW DN TO SERVE KITCHEN EQUIPMENT CONNECTIONS PER SCHEDULE ON P0.2.
9	HOSE BIBB - 3/4" CW, 3/4" HW DN.
10	2" INDIRECT DRAIN, TERMINATE WITH APPROVED AIR GAP AT FLOOR SINK.
11	3/4" CW AND 1/2" HW DN TO SERVE KITCHEN EQUIPMENT CONNECTIONS PER SCHEDULE ON P0.2.
12	3/4" COMPRESSED AIR DN TO SERVE KITCHEN EQUIPMENT CONNECTIONS PER SCHEDULE ON P0.2.
13	3/4" INDIRECT DRAIN, TERMINATE WITH APPROVED AIR GAP AT FLOOR SINK.
14	3/4" CW AND 1/2" HW DN TO SERVE KITCHEN EQUIPMENT CONNECTIONS PER SCHEDULE ON P0.2.
15	3/4" COMPRESSED AIR DN TO SERVE KITCHEN EQUIPMENT CONNECTIONS PER SCHEDULE ON P0.2.
16	3" W UP, 2" V DN TO KITCHEN EQUIPMENT MOUNTED IN SLAB PER SCHEDULE ON P0.2.
17	3/4" CW AND 1/2" HW DN, 3/4" INDIRECT CONDENSATE DRAIN (TERMINATE WITH APPROVED AIR GAP AT FLOOR SINK) TO SERVE KITCHEN EQUIPMENT CONNECTIONS PER SCHEDULE ON P0.2.
18	3/4" HW DN, 1" INDIRECT DRAIN (TERMINATE WITH APPROVED AIR GAP AT FLOOR SINK) TO SERVE KITCHEN EQUIPMENT CONNECTIONS PER SCHEDULE ON P0.2.
19	3/4" CW AND 1/2" HW DN, 2" INDIRECT DRAIN (TERMINATE WITH APPROVED AIR GAP AT FLOOR SINK) TO SERVE KITCHEN EQUIPMENT CONNECTIONS PER SCHEDULE ON P0.2.
20	3/4" CW (FILTERED FROM ITEM K-106) DN, 3/4" NG DN, 1 1/2" INDIRECT DRAIN (TERMINATE WITH APPROVED AIR GAP AT FLOOR SINK) TO SERVE KITCHEN EQUIPMENT CONNECTIONS PER SCHEDULE ON P0.2.
21	3/4" CW DN, 3/4" NG DN TO SERVE KITCHEN EQUIPMENT CONNECTIONS PER SCHEDULE ON P0.2.
22	3/4" CW (FILTERED FROM ITEM K-106) DN, 1 1/2" INDIRECT DRAIN (TERMINATE WITH APPROVED AIR GAP AT FLOOR SINK) TO SERVE KITCHEN EQUIPMENT CONNECTIONS PER SCHEDULE ON P0.2.
23	3/4" CW DN, 3/4" INDIRECT DRAIN (TERMINATE WITH APPROVED AIR GAP AT FLOOR SINK) TO SERVE KITCHEN EQUIPMENT CONNECTIONS PER SCHEDULE ON P0.2.
24	3/4" CW AND 1/2" HW DN, 3/4" NG DN TO SERVE KITCHEN EQUIPMENT CONNECTIONS PER SCHEDULE ON P0.2.
25	3/4" CW AND 1/2" HW DN TO SERVE KITCHEN EQUIPMENT CONNECTIONS PER SCHEDULE ON P0.2.
26	NOT USED.
27	3/4" CW AND 1/2" HW DN, 2" V DN, 2" W UP TO SERVE KITCHEN EQUIPMENT CONNECTIONS PER SCHEDULE ON P0.2.
28	3/4" CW DN, 2" W UP TO SERVE KITCHEN EQUIPMENT CONNECTIONS PER SCHEDULE ON P0.2.
29	3/4" HW DN, 2" INDIRECT DRAIN (TERMINATE WITH APPROVED AIR GAP AT FLOOR SINK) TO SERVE KITCHEN EQUIPMENT CONNECTIONS PER SCHEDULE ON P0.2.
30	3/4" HW DN TO SERVE KITCHEN EQUIPMENT CONNECTIONS PER SCHEDULE ON P0.2.
31	1" INDIRECT DRAIN, TERMINATE WITH APPROVED AIR GAP AT FLOOR SINK.
32	3/4" CW AND 1/2" HW FROM BELOW SLAB TO SERVE KITCHEN EQUIPMENT CONNECTIONS PER SCHEDULE ON P0.2.
33	3/4" CW AND 1/2" HW DN, 3" W UP TO SERVE KITCHEN EQUIPMENT CONNECTIONS PER SCHEDULE ON P0.2.
34	3/4" CW AND 1/2" HW DN, 1 1/2" INDIRECT DRAIN (TERMINATE WITH APPROVED AIR GAP AT FLOOR SINK) TO SERVE KITCHEN EQUIPMENT CONNECTIONS PER SCHEDULE ON P0.2.
35	3/4" CW (FILTERED FROM ITEM K-180) DN TO SERVE KITCHEN EQUIPMENT CONNECTIONS PER SCHEDULE ON P0.2.
36	3/4" CW (FILTERED FROM ITEM K-180) DN, 1/2" INDIRECT DRAIN (TERMINATE WITH APPROVED AIR GAP AT FLOOR SINK) TO SERVE KITCHEN EQUIPMENT CONNECTIONS PER SCHEDULE ON P0.2.
37	2" W UP, 2" V DN TO KITCHEN EQUIPMENT MOUNTED IN SLAB PER SCHEDULE ON P0.2.
38	3/4" INDIRECT DRAIN, TERMINATE WITH APPROVED AIR GAP AT FLOOR SINK.
39	BALANCE HWR VALVE TO 1.5 GPM.
40	BALANCE HWR VALVE TO 0.5 GPM.

COM.P.P
 CONFORMED SET-
 Construction

1793 Columbia Street
 Eugene, OR 97403

www.robertsonsherwood.com
 P 541 | 342-8077
 F 541 | 345-3302

Robertson Sherwood Architects pc

132 East Broadway, Suite 540
 Eugene, Oregon 97401

UO Housing Central Kitchen & Woodshop

ALLIANT
 SYSTEMS
 INC.

1480 NW 35TH PL, STE 530
 BEAVERTON, OR 97006
 PHONE: 503.616.4000
 FAX: 503.239.9238
 WWW.ALLIANTSYSTEMS.COM
 CCB# 153420

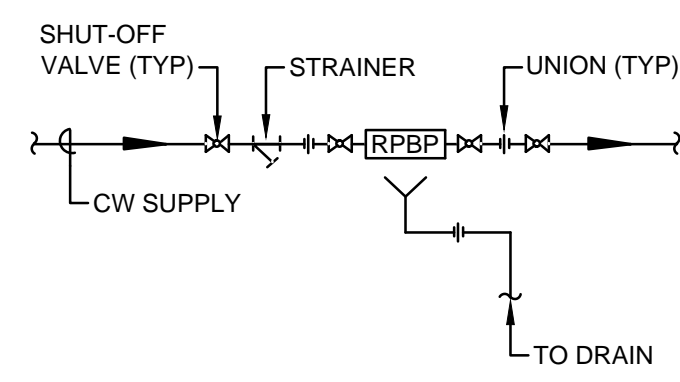
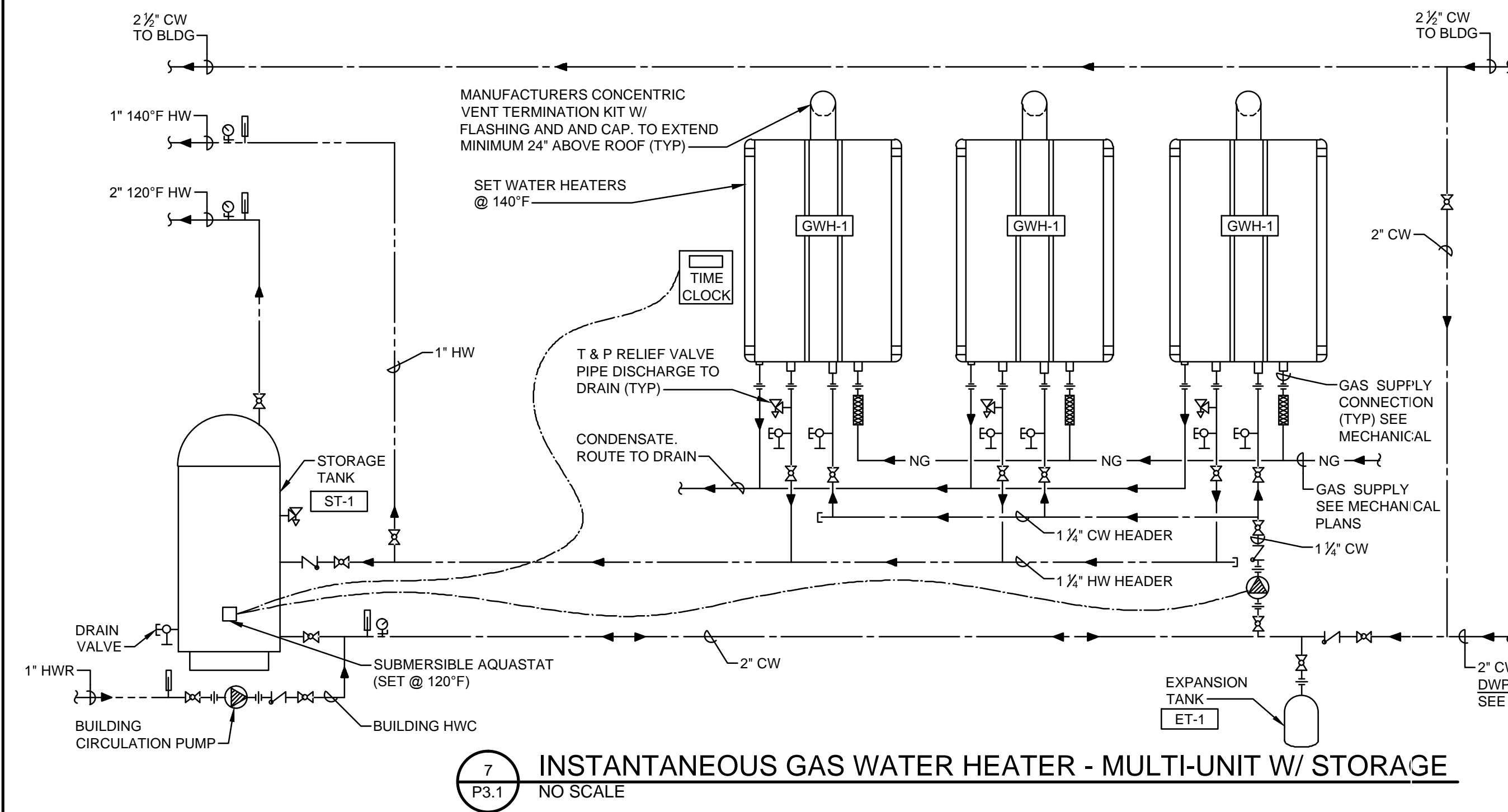
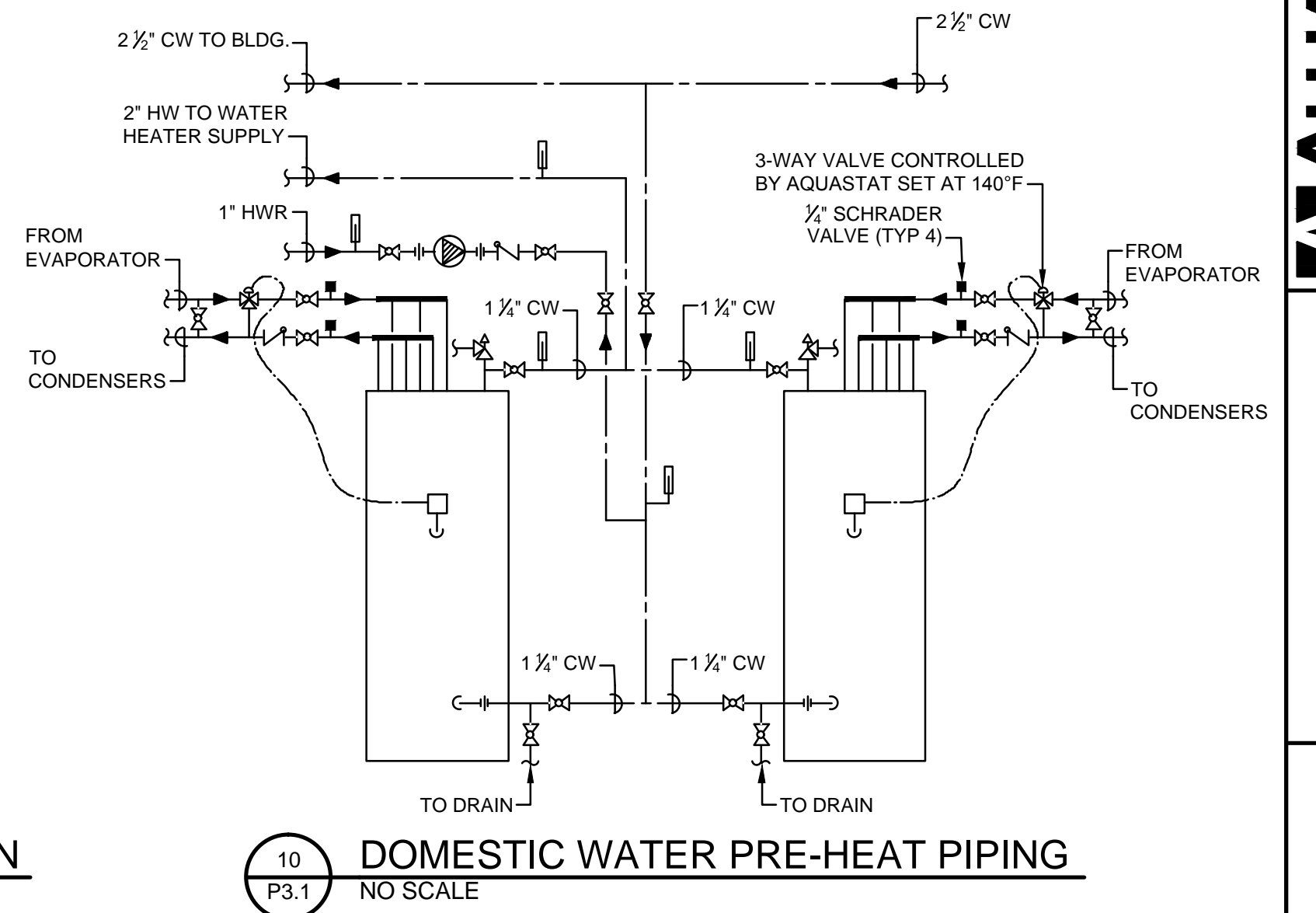
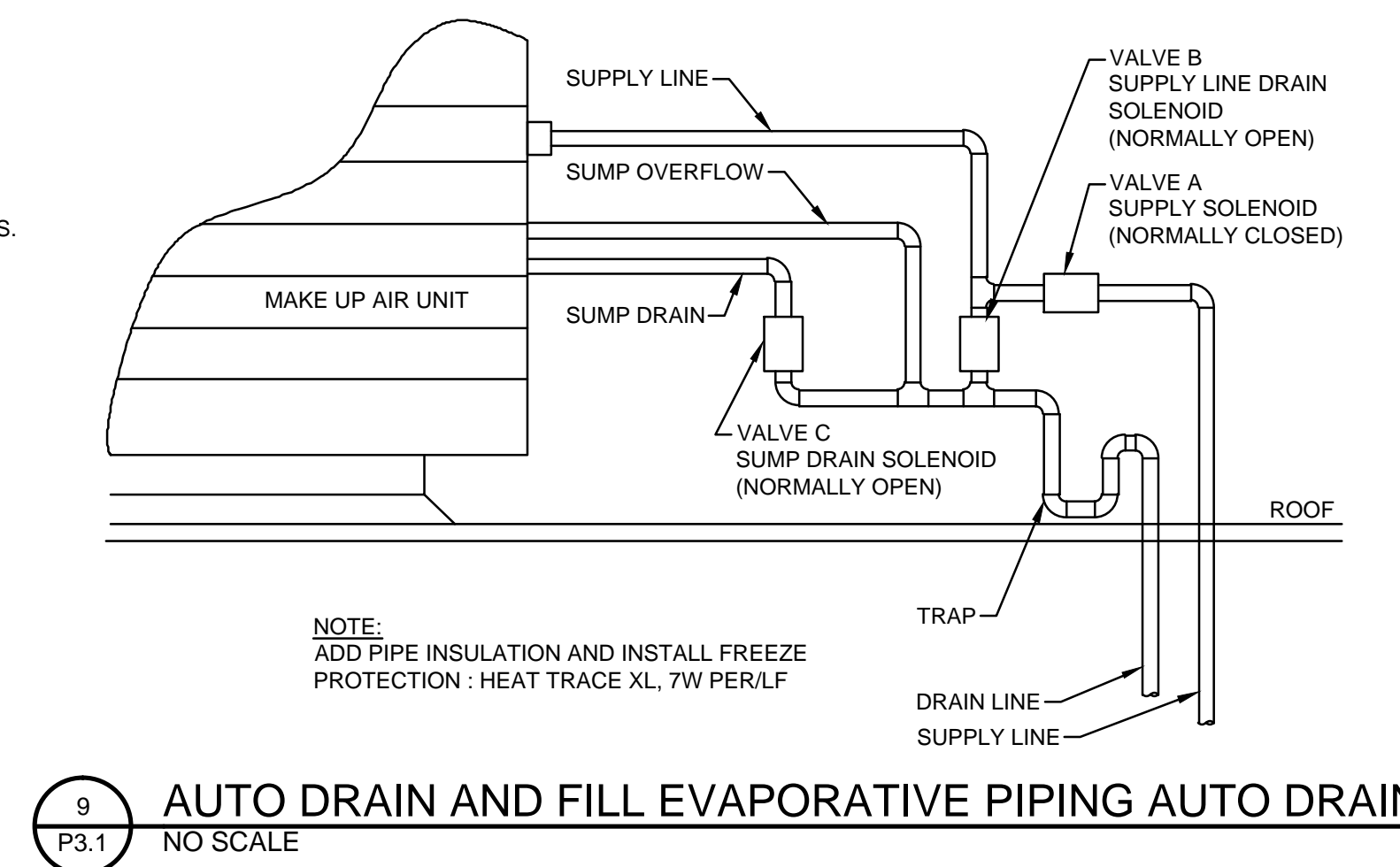
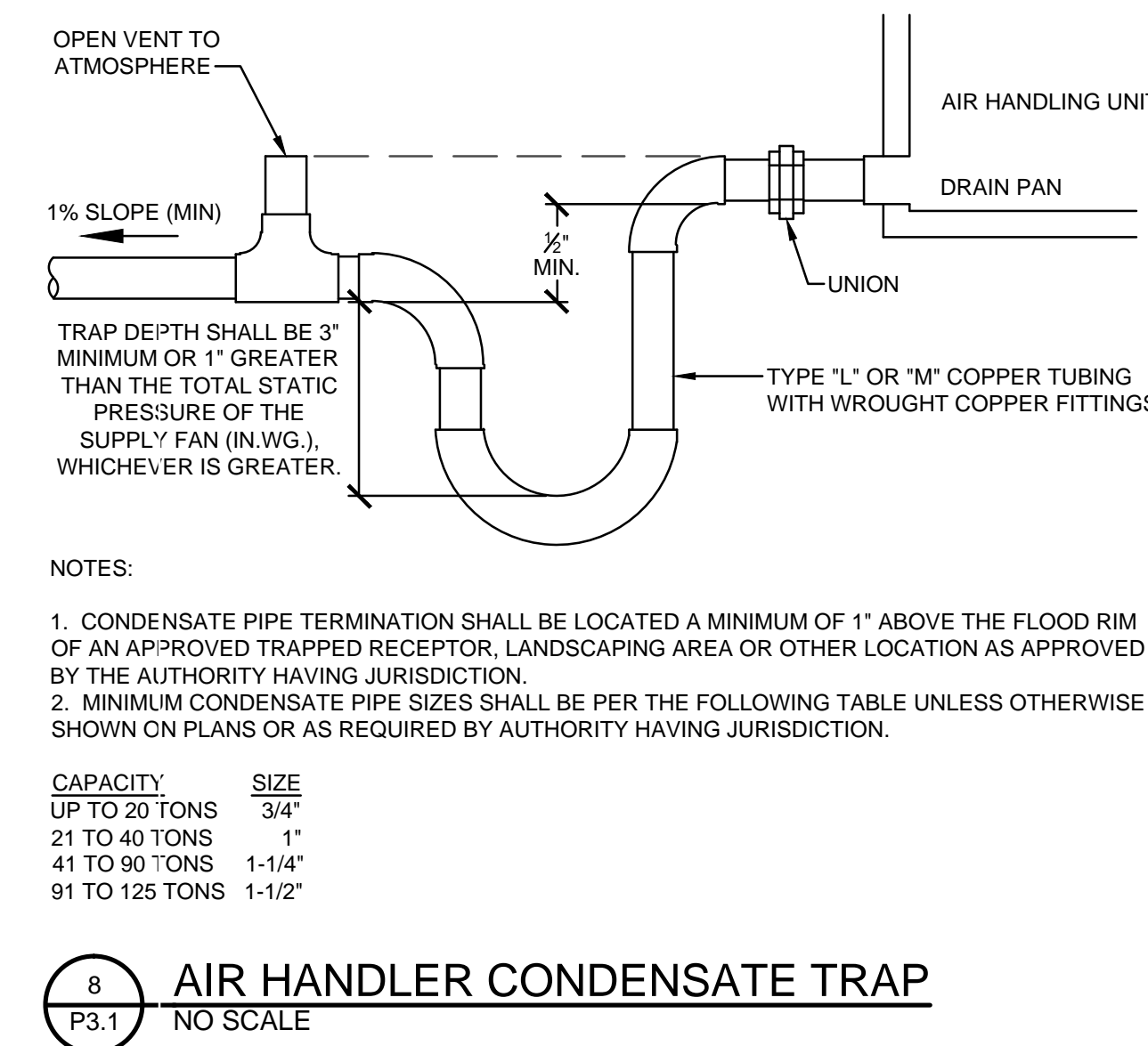
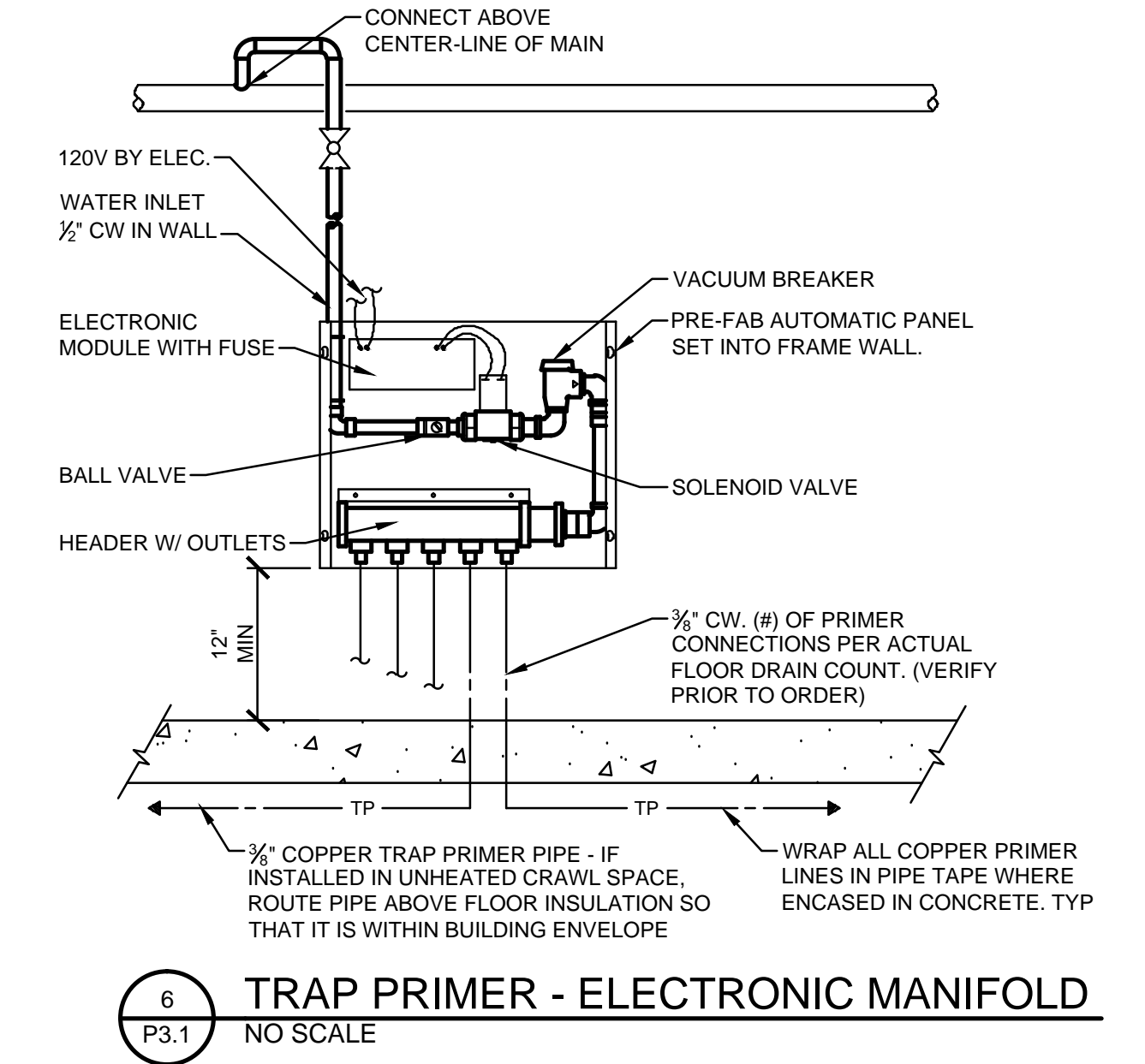
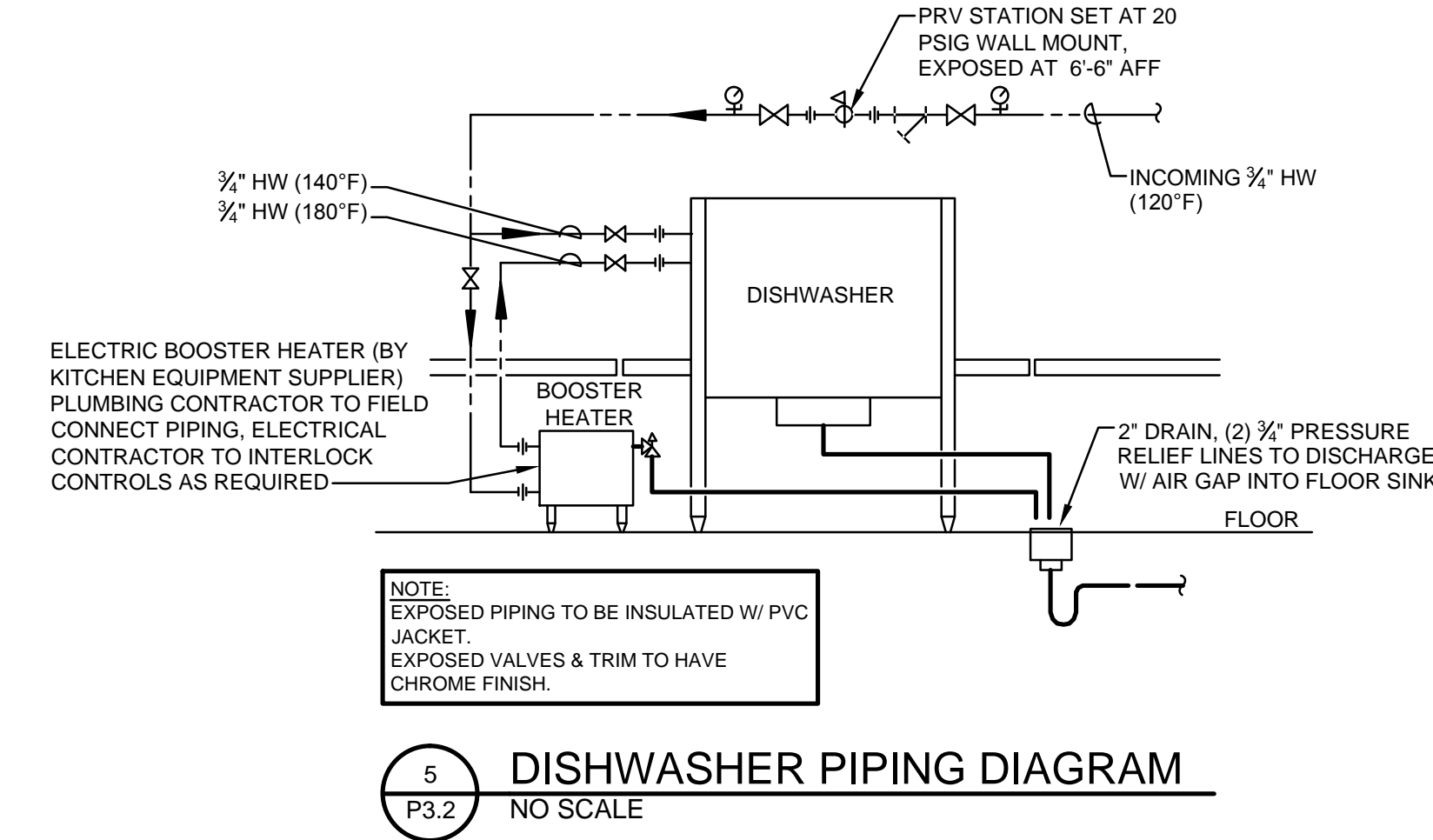
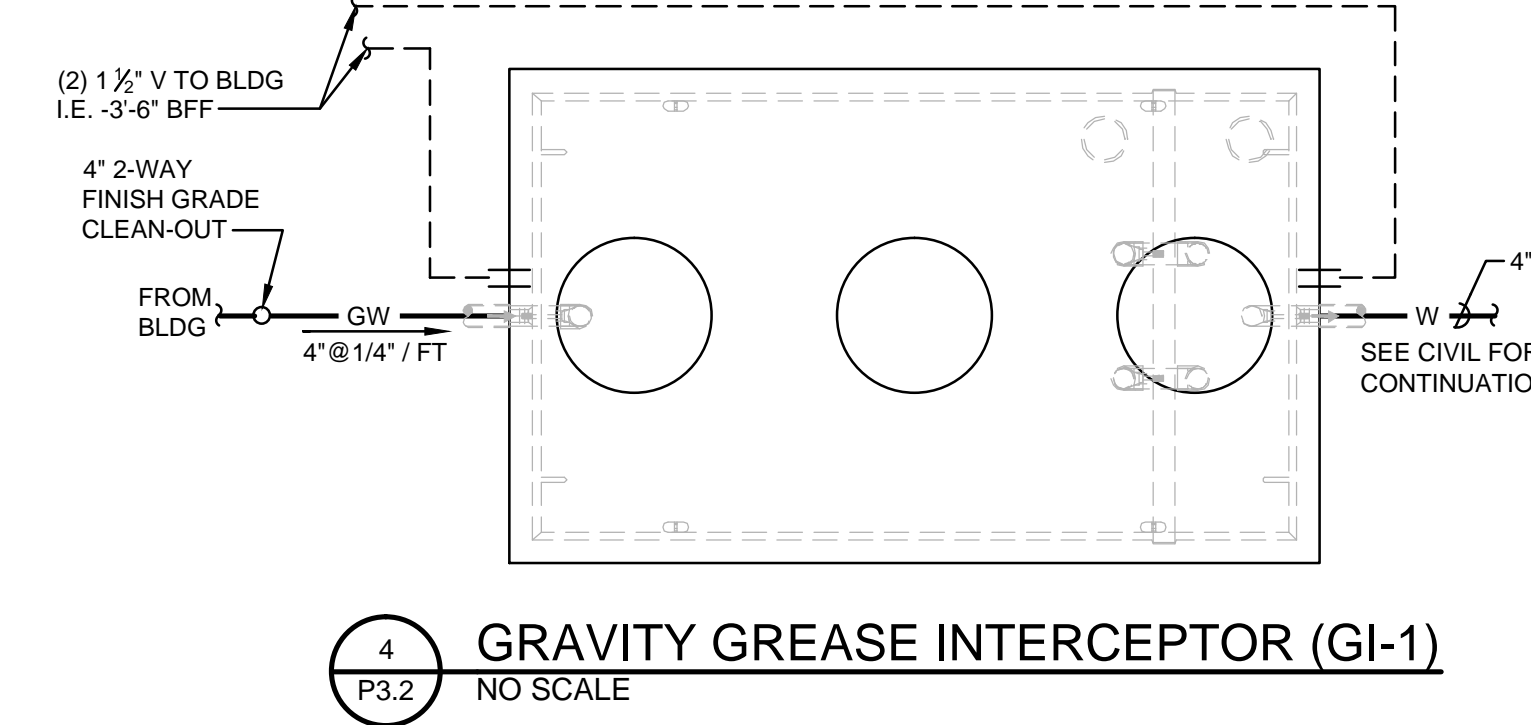
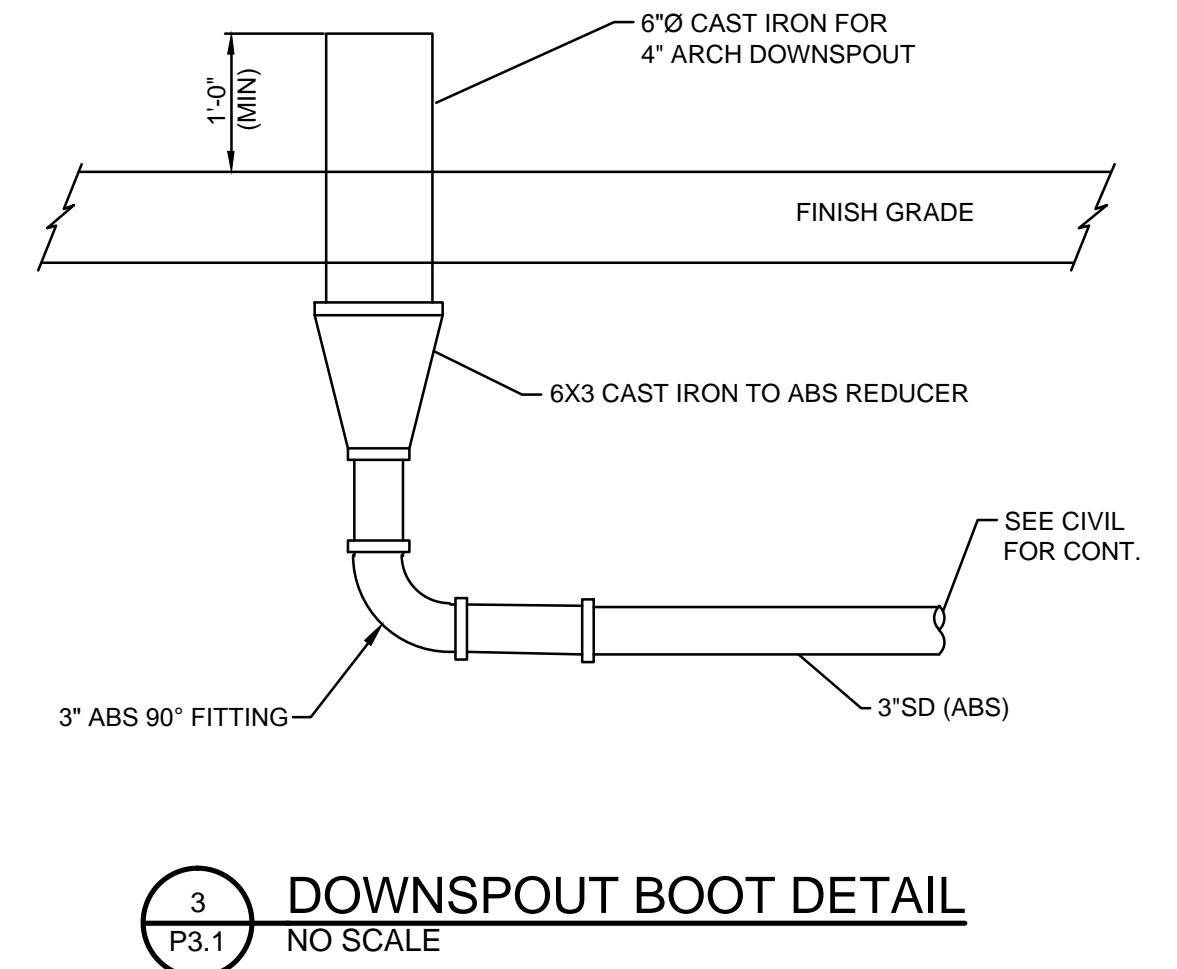
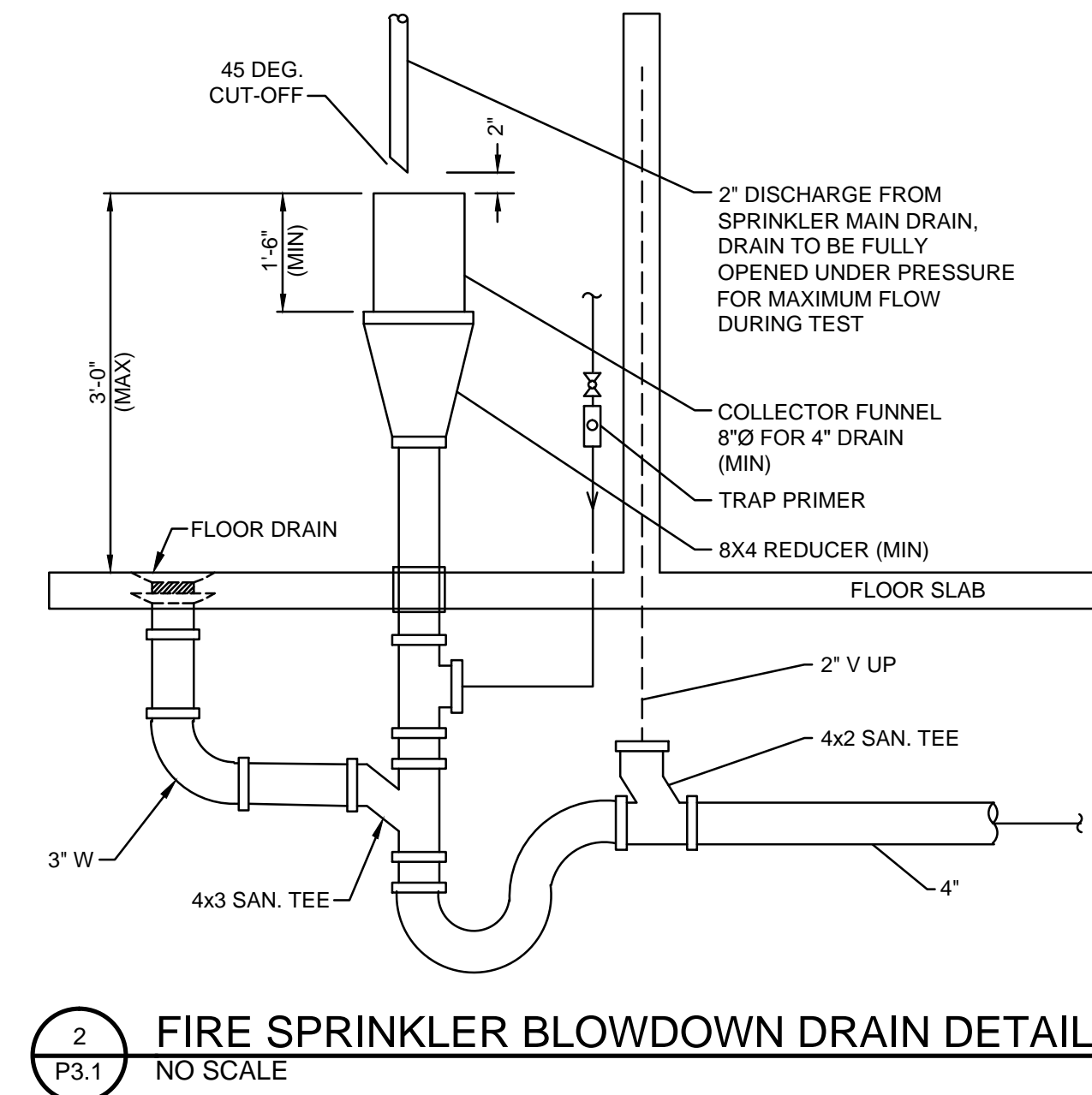
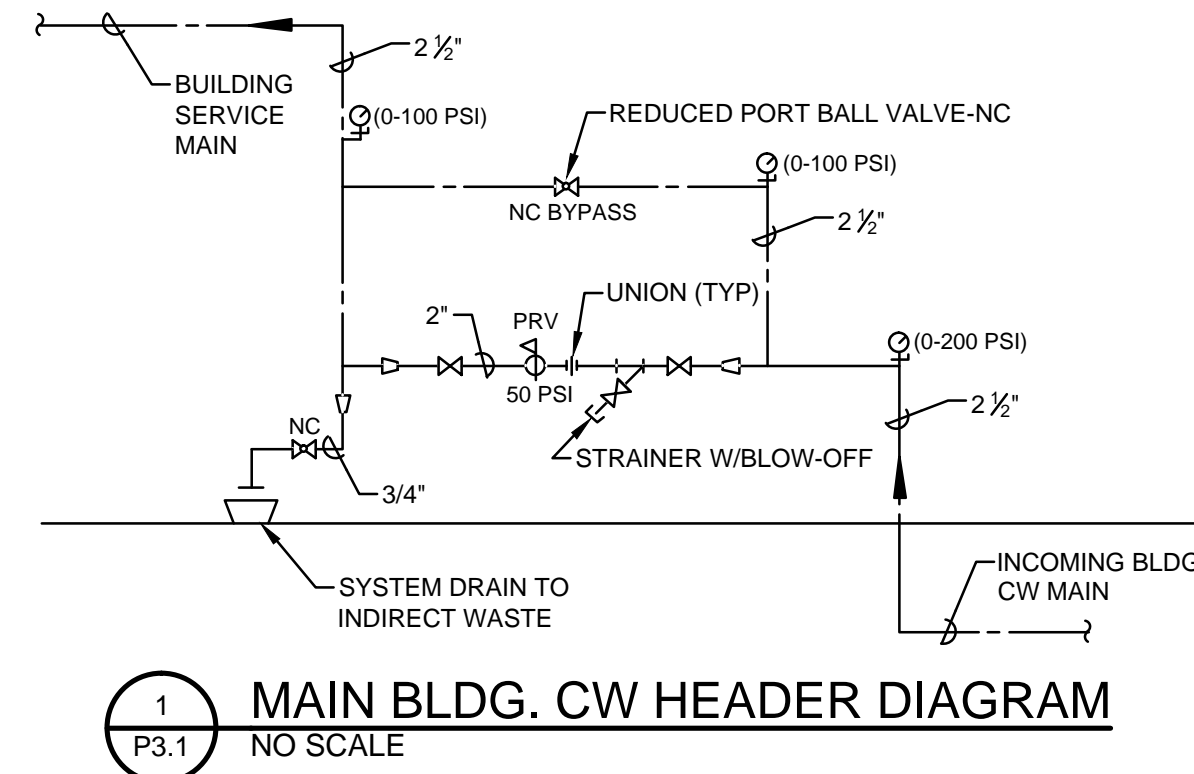
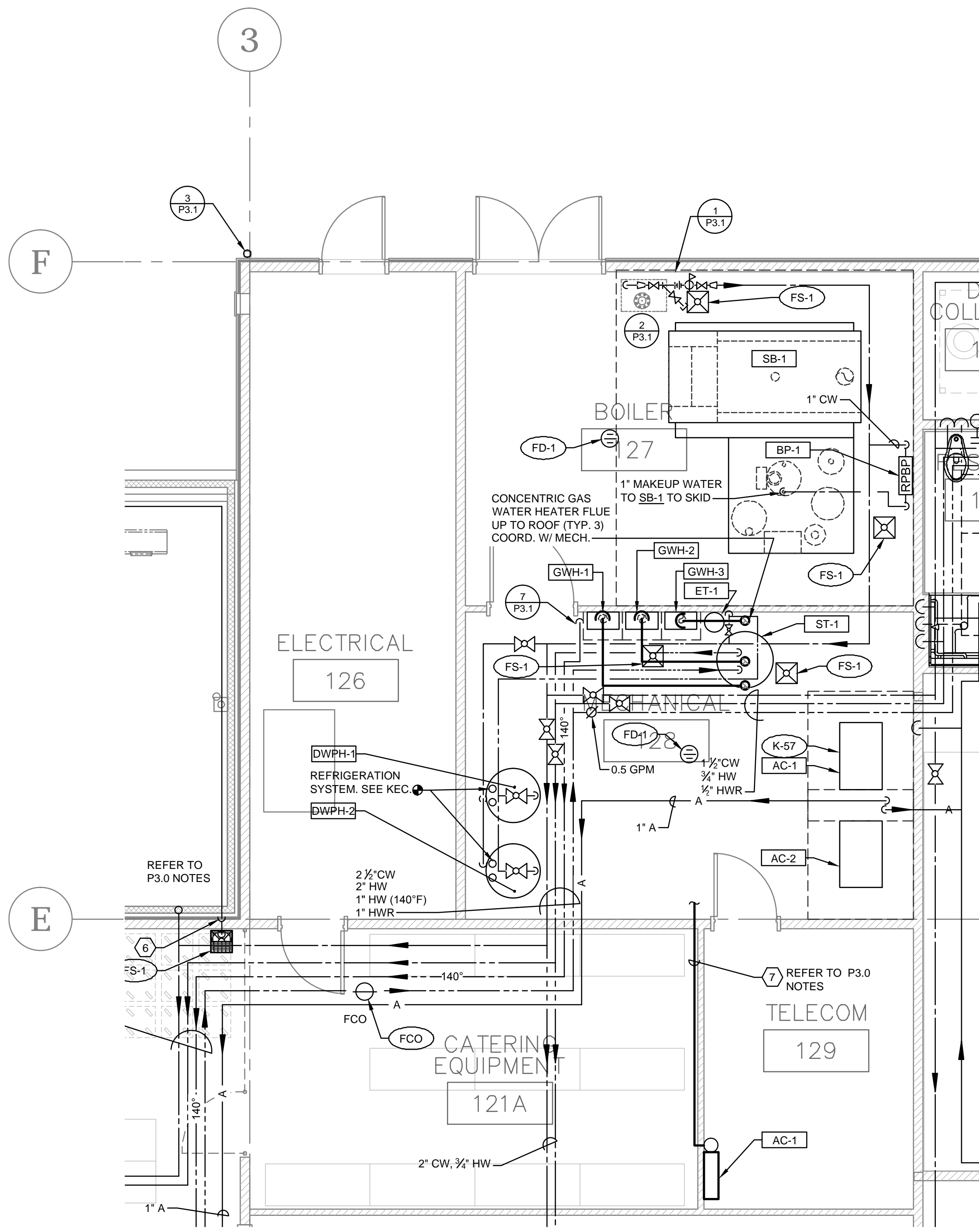
Drawn By: RC

Checked: AF

Date: 7 NOV 2014

Project: 1407

P3.0



PEX PIPE SUPPORT

PIPE SIZE	MAX. SUPPORT SPACING (A)	MAX. CANTILEVER (B)	MIN. OVERLAP (C)	MIN. DISTANCE TO FITTING (D)
1/2"	6'			1-1/4"
3/4"				1-3/4"
1"		18"	6"	2-1/4"
1-1/4"				2-3/4"
1-1/2"				3"
2"				4"

