

A. REFER TO SHEET DE000 FOR DEMOLITION AND PROJECT GENERAL NOTES, LEGENDS AND ABBREVIATIONS.

1. REMOVE SITE LUMINAIRE AND RETAIN FOR FUTURE REUSE. REMOVE CONDUIT AND CONDUCTORS WHERE POSSIBLE.
2. EXISTING SITE LUMINAIRE TO REMAIN.
3. EXISTING TELECOM SERVICE TO BUILDING ENTERS THE UTILITY TUNNEL HERE, AND IS ROUTED WEST TO A SERVICE LOOP BEFORE IT FEEDS THE EXISTING BUILDING TELECOM ENTRANCE FACILITY. PROTECT CABLE FROM DAMAGE DURING DEMOLITION. OWNER TO RE-ROUTE AND RE-TERMINATE IN AT NEW MDF ROOM.

338 NW 5TH AVENUE
PORTLAND OREGON 97209
P: 503.445.7372
F: 503.445.7395
SERAPDX.COM

900 SW Fifth Ave., Suite 1600
Portland, OR 97204
T. 503.227.5280 F. 503.274.7674
www.glimac.com
Job. No.: 02.13.00545
Contact: **RON BAYLES**

■ ■
engineers for a sustainable future

**ERB MEMOR
PACKAGE 4**
UNIVERSITY OF OREGON
13TH AVENUE & UNIVERSITY STREET

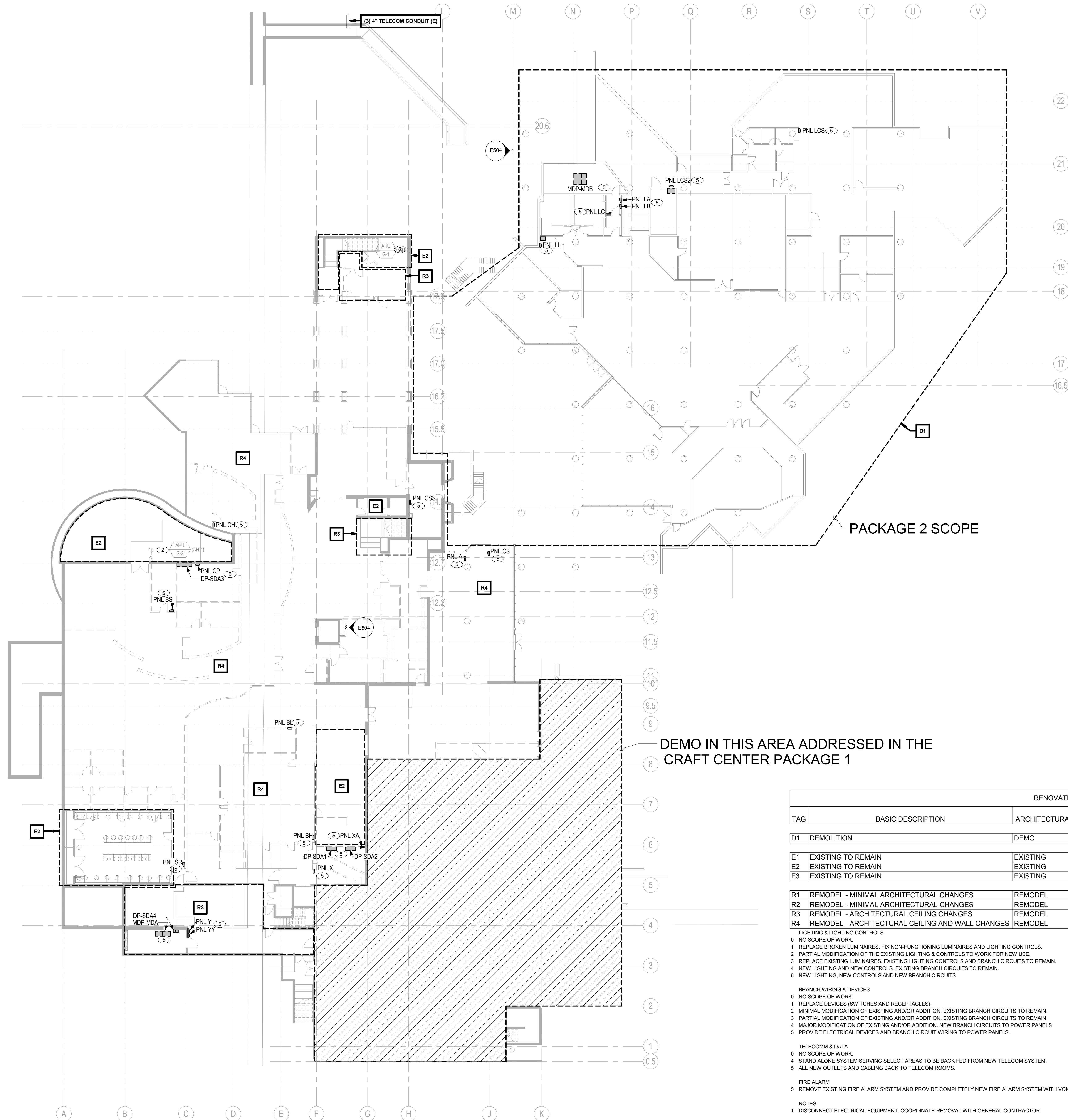
REVISIONS

CHECKED BY:
ISSUE DATE: 2014.03.14
PROJECT NO.: 11045

DEMO PLAN -
SITE -
ELECTRICAL

DE051


50% CONSTRUCTION DOCUMENTS



A. REFER TO SHEET DE000 FOR DEMOLITION AND PROJECT GENERAL NOTES, LEGENDS AND ABBREVIATIONS.

1. REPLACE EXISTING BRANCH PANEL AND REFEED FROM NEW DISTRIBUTION. RECONNECT BRANCH CIRCUITS TO NEW PANEL. REFER TO SINGLE LINE DIAGRAMS.
2. EXISTING EQUIPMENT TO REMAIN. REFEED FROM NEW DISTRIBUTION. REFER TO SINGLE LINE DIAGRAMS.
3. ELECTRICAL EQUIPMENT TO STAY IN SERVICE UNTIL PACKAGE #5. BACK FEED FROM EQUIPMENT INSTALL IN PRIOR PHASE.
4. DISCONNECT AND RECONNECT PHOTOVOLTAIC EQUIPMENT. PHOTOVOLTAIC EQUIPMENT WILL BE RECONNECTED ON ROOF OF NORTH BAR.
5. REMOVE EQUIPMENT INDICATED. REMOVE CONDUIT AND CONDUCTORS BACK TO PANEL. COORDINATE EQUIPMENT SHUTDOWN WITH OWNER.
6. DISCONNECT EQUIPMENT INDICATED AND RETURN TO OWNER.
7. TENANT SPACE LIGHTING, POWER AND TELECOM PROVIDED BY TENANT.

338 NW 5TH AVENUE
PORTLAND OREGON 97209
P: 503.445.7372
F: 503.445.7395
SERAPDX.COM

900 SW Fifth Ave., Suite 1600
Portland, OR 97204
T. 503.227.5280 F. 503.274.7674
www.glumac.com
Job. No.: 02.13.00545
Contact: **RON BAYLES**

engineers for a sustainable future

UNIVERSITY OF OREGON
13TH AVENUE & UNIVERSITY STREET

REVISIONS

CHECKED BY:
ISSUE DATE: 2014.03.14
PROJECT NO.: 11045

DEMO PLAN -
GROUND LEVEL
- ELECTRICAL

DE100

50% CONSTRUCTION DOCUMENTS

RENOVATION MATRIX								
TAG	BASIC DESCRIPTION	ARCHITECTURAL	LIGHTING	LIGHTING CONTROLS	BRANCH WIRING & DEVICES	TELECOM & DATA	FIRE ALARM	COMMENTS
D1	DEMOLITION	DEMO						SEE NOTE
E1	EXISTING TO REMAIN	EXISTING	0	0	0	5	5	
E2	EXISTING TO REMAIN	EXISTING	1	2	2	5	5	
E3	EXISTING TO REMAIN	EXISTING	0	0	0	0	5	
R1	REMODEL - MINIMAL ARCHITECTURAL CHANGES	REMODEL	2	2	2	5	5	
R2	REMODEL - MINIMAL ARCHITECTURAL CHANGES	REMODEL	3	3	3	5	5	
R3	REMODEL - ARCHITECTURAL CEILING CHANGES	REMODEL	4	4	3	5	5	
R4	REMODEL - ARCHITECTURAL CEILING AND WALL CHANGES	REMODEL	5	5	4	5	5	

LIGHTING & LIGHTING CONTROLS

0 NO SCOPE OF WORK.

1 REPLACE BROKEN LUMINAIRES. FIX NON-FUNCTIONING LUMINAIRES AND LIGHTING CONTROLS.

2 PARTIAL MODIFICATION OF THE EXISTING LIGHTING & CONTROLS TO WORK FOR NEW USE.

3 REPLACE EXISTING LUMINAIRES, EXISTING LIGHTING CONTROLS AND BRANCH CIRCUITS TO REMAIN.

4 NEW LIGHTING AND NEW CONTROLS. EXISTING BRANCH CIRCUITS TO REMAIN.

5 NEW LIGHTING, NEW CONTROLS AND NEW BRANCH CIRCUITS.

BRANCH WIRING & DEVICES

0 NO SCOPE OF WORK.

1 REPLACE DEVICES (SWITCHES AND RECEPTACLES).

2 MINIMAL MODIFICATION OF EXISTING AND/OR ADDITION. EXISTING BRANCH CIRCUITS TO REMAIN.

3 PARTIAL MODIFICATION OF EXISTING AND/OR ADDITION. EXISTING BRANCH CIRCUITS TO REMAIN.

4 MAJOR MODIFICATION OF EXISTING AND/OR ADDITION. NEW BRANCH CIRCUITS TO POWER PANELS.

5 PROVIDE ELECTRICAL DEVICES AND BRANCH CIRCUIT WIRING TO POWER PANELS.

TELECOMM & DATA

0 NO SCOPE OF WORK.

4 STAND ALONE SYSTEM SERVING SELECT AREAS TO BE BACK FED FROM NEW TELECOM SYSTEM.


5 ALL NEW OUTLETS AND CABLING BACK TO TELECOM ROOMS.

5 REMOVE EXISTING FIRE ALARM SYSTEM AND PROVIDE COMPLETELY NEW FIRE ALARM SYSTEM WITH VOICE EVAC PER CODE

NOTES

1 DISCONNECT ELECTRICAL EQUIPMENT. COORDINATE REMOVAL WITH GENERAL CONTRACTOR.

1/16" = 1'-0"

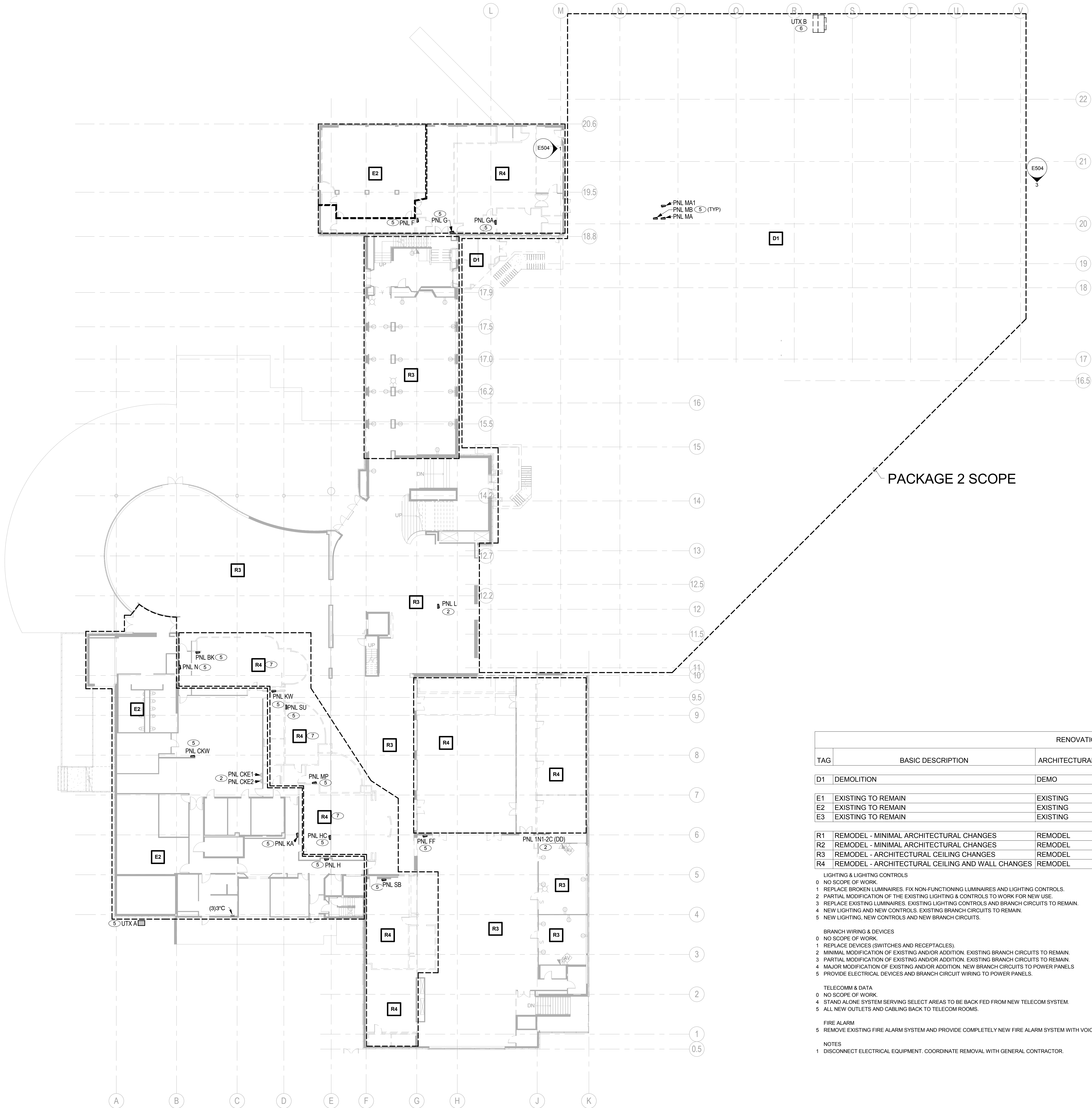


0 16'-0" 32'-0" 48'-0" 64'-0"

1

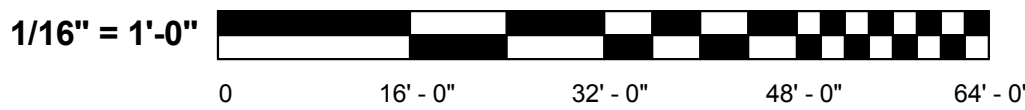
LEVEL 1 FLOOR PLAN - OVERALL - DEMO ELECTRICAL

SCALE: 1/16" = 1'-0"



RENOVATION MATRIX								
TAG	BASIC DESCRIPTION	ARCHITECTURAL	LIGHTING	LIGHTING CONTROLS	BRANCH WIRING & DEVICES	TELECOM & DATA	FIRE ALARM	COMMENTS
D1	DEMOLITION	DEMO						SEE NOTE 1
E1	EXISTING TO REMAIN	EXISTING	0	0	0	5	5	
E2	EXISTING TO REMAIN	EXISTING	1	2	2	5	5	
E3	EXISTING TO REMAIN	EXISTING	0	0	0	0	5	
R1	REMODEL - MINIMAL ARCHITECTURAL CHANGES	REMODEL	2	2	2	5	5	
R2	REMODEL - MINIMAL ARCHITECTURAL CHANGES	REMODEL	3	3	3	5	5	
R3	REMODEL - ARCHITECTURAL CEILING CHANGES	REMODEL	4	4	3	5	5	
R4	REMODEL - ARCHITECTURAL CEILING AND WALL CHANGES	REMODEL	5	5	4	5	5	

- LIGHTING & LIGHTING CONTROLS
- 0 NO SCOPE OF WORK.
- 1 REPLACE BROKEN LUMINAIRES. FIX NON-FUNCTIONING LUMINAIRES AND LIGHTING CONTROLS.
- 2 PARTIAL MODIFICATION OF THE EXISTING LIGHTING & CONTROLS TO WORK FOR NEW USE.
- 3 REPLACE EXISTING LUMINAIRES. EXISTING LIGHTING CONTROLS AND BRANCH CIRCUITS TO REMAIN.
- 4 MAJOR MODIFICATION OF EXISTING AND/OR ADDITION. NEW BRANCH CIRCUITS TO POWER PANELS.
- 5 NEW LIGHTING, NEW CONTROLS AND NEW BRANCH CIRCUITS.
- BRANCH WIRING & DEVICES
- 0 NO SCOPE OF WORK.
- 1 REPLACE DEVICES (SWITCHES AND RECEPTACLES).
- 2 MINIMAL MODIFICATION OF EXISTING AND/OR ADDITION. EXISTING BRANCH CIRCUITS TO REMAIN.
- 3 PARTIAL MODIFICATION OF EXISTING AND/OR ADDITION. EXISTING BRANCH CIRCUITS TO REMAIN.
- 4 MAJOR MODIFICATION OF EXISTING AND/OR ADDITION. NEW BRANCH CIRCUITS TO POWER PANELS.
- 5 PROVIDE ELECTRICAL DEVICES AND BRANCH CIRCUIT WIRING TO POWER PANELS.
- TELECOMM & DATA
- 0 NO SCOPE OF WORK.
- 1 STAND ALONE SYSTEM SERVING SELECT AREAS TO BE BACK FED FROM NEW TELECOM SYSTEM.
- 5 ALL NEW OUTLETS AND CABLING BACK TO TELECOM ROOMS.
- FIRE ALARM
- 5 REMOVE EXISTING FIRE ALARM SYSTEM AND PROVIDE COMPLETELY NEW FIRE ALARM SYSTEM WITH VOICE EVAC PER CODE.
- NOTES
- 1 DISCONNECT ELECTRICAL EQUIPMENT. COORDINATE REMOVAL WITH GENERAL CONTRACTOR.



GENERAL NOTES

- A. REFER TO SHEET DE000 FOR DEMOLITION AND PROJECT GENERAL NOTES, LEGENDS AND ABBREVIATIONS.

SHEET NOTES

1. REPLACE EXISTING BRANCH PANEL AND REFEED FROM NEW DISTRIBUTION. RECONNECT BRANCH CIRCUITS TO NEW PANEL. REFER TO SINGLE LINE DIAGRAMS.
2. EXISTING EQUIPMENT TO REMAIN. REFEED FROM NEW DISTRIBUTION. REFER TO SINGLE LINE DIAGRAMS.
3. ELECTRICAL EQUIPMENT TO STAY IN SERVICE UNTIL PACKAGE #5. BACK FEED FROM EQUIPMENT INSTALL IN PRIOR PHASE.
4. DISCONNECT AND RECONNECT PHOTOVOLTAIC EQUIPMENT. PHOTOVOLTAIC EQUIPMENT WILL BE RECONNECTED ON ROOF OF NORTH BAR.
5. REMOVE EQUIPMENT INDICATED. REMOVE CONDUIT AND CONDUCTORS BACK TO PANEL. COORDINATE EQUIPMENT SHUTDOWN WITH OWNER.
6. DISCONNECT EQUIPMENT INDICATED AND RETURN TO OWNER.
7. TENANT SPACE. LIGHTING, POWER AND TELECOM PROVIDED BY TENANT.

SEBA

ARCHITECTURE
URBAN DESIGN + PLANNING
INTERIOR DESIGN

338 NW 5TH AVENUE
PORTLAND OREGON 97209
P: 503.445.7372
F: 503.445.7365
SERAPDX.COM

GLUMAC

900 SW Fifth Ave., Suite 1600
Portland, OR 97204
T: 503.227.5286 F: 503.274.7874
www.glumac.com
Job No. 02-13-0545
Contact: RON BAYLES
engineers for a sustainable future™

ERB MEMORIAL UNION - RENOVATION & ADDITION
PACKAGE 4

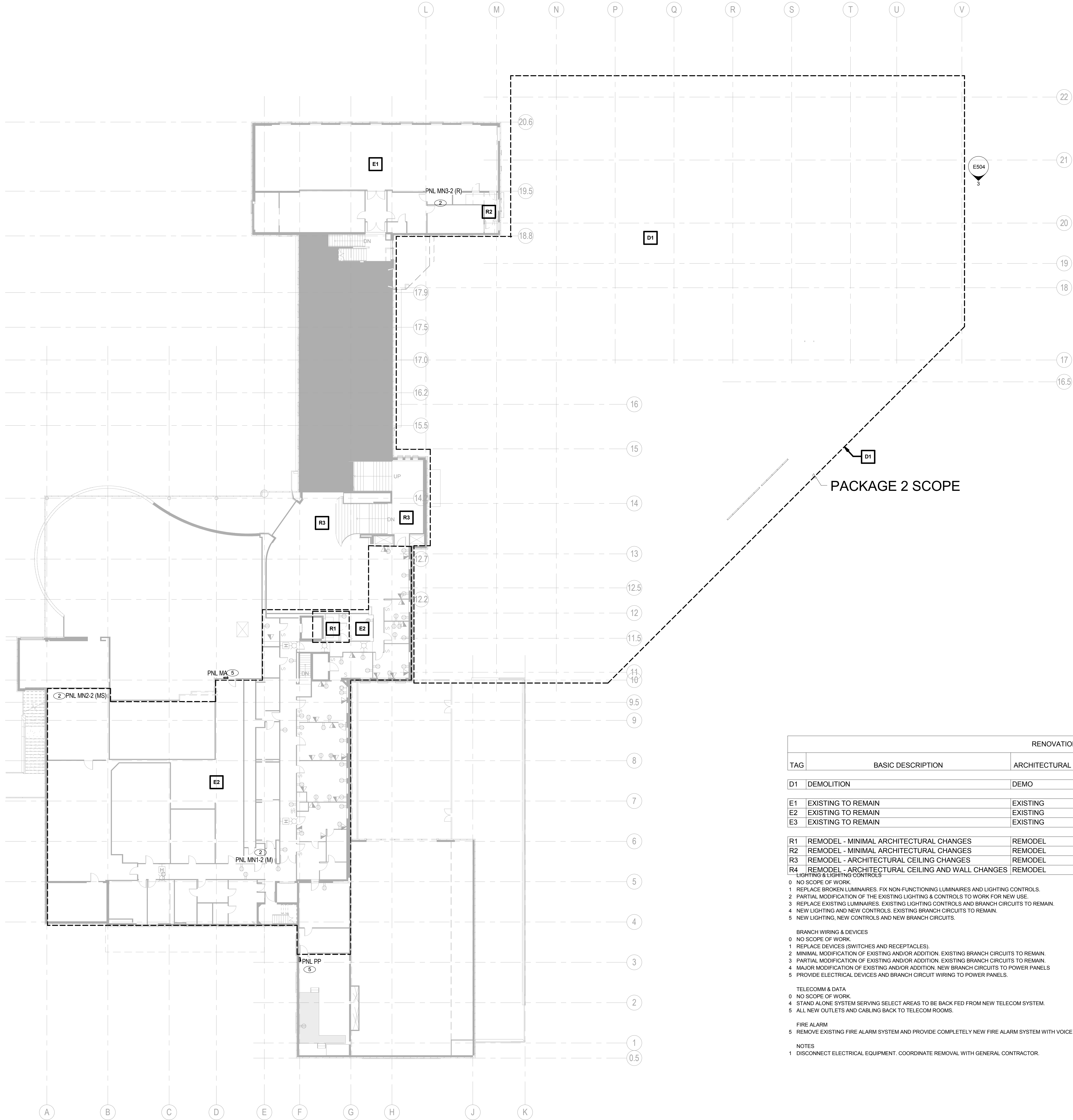
UNIVERSITY OF OREGON
13TH AVENUE & UNIVERSITY STREET

REVISIONS

CHECKED BY:
ISSUE DATE: 2014.03.14
PROJECT NO.: 11045

DEMO PLAN -
LEVEL 1 -
ELECTRICAL

DE101



GENERAL NOTES

- A. REFER TO SHEET DE000 FOR DEMOLITION AND PROJECT GENERAL NOTES, LEGENDS AND ABBREVIATIONS.

SHEET NOTES

1. REPLACE EXISTING BRANCH PANEL AND REFEED FROM NEW DISTRIBUTION. RECONNECT BRANCH CIRCUITS TO NEW PANEL. REFER TO SINGLE LINE DIAGRAMS.
2. EXISTING EQUIPMENT TO REMAIN. REFEED FROM NEW DISTRIBUTION. REFER TO SINGLE LINE DIAGRAMS.
3. ELECTRICAL EQUIPMENT TO STAY IN SERVICE UNTIL PACKAGE #5. BACK FEED FROM EQUIPMENT INSTALL IN PRIOR PHASE.
4. DISCONNECT AND RECONNECT PHOTOVOLTAIC EQUIPMENT. PHOTOVOLTAIC EQUIPMENT WILL BE RECONNECTED ON ROOF OF NORTH BAR.
5. REMOVE EQUIPMENT INDICATED. REMOVE CONDUIT AND CONDUCTORS BACK TO PANEL. COORDINATE EQUIPMENT SHUTDOWN WITH OWNER.
6. DISCONNECT EQUIPMENT INDICATED AND RETURN TO OWNER.
7. TENANT SPACE. LIGHTING, POWER AND TELECOM PROVIDED BY TENANT.

RENOVATION MATRIX								
TAG	BASIC DESCRIPTION	ARCHITECTURAL	LIGHTING	LIGHTING CONTROLS	BRANCH WIRING & DEVICES	TELECOM & DATA	FIRE ALARM	COMMENTS
D1	DEMOLITION	DEMO						SEE NOTE 1
E1	EXISTING TO REMAIN	EXISTING	0	0	0	5	5	
E2	EXISTING TO REMAIN	EXISTING	1	2	2	5	5	
E3	EXISTING TO REMAIN	EXISTING	0	0	0	0	5	
R1	REMODEL - MINIMAL ARCHITECTURAL CHANGES	REMODEL	2	2	2	5	5	
R2	REMODEL - MINIMAL ARCHITECTURAL CHANGES	REMODEL	3	3	3	5	5	
R3	REMODEL - ARCHITECTURAL CEILING CHANGES	REMODEL	4	4	3	5	5	
R4	REMODEL - ARCHITECTURAL CEILING AND WALL CHANGES	REMODEL	5	5	4	5	5	

- 0 NO SCOPE OF WORK.
- 1 REPLACE BROKEN LUMINAIRES. FIX NON-FUNCTIONING LUMINAIRES AND LIGHTING CONTROLS.
- 2 PARTIAL MODIFICATION OF THE EXISTING LIGHTING & CONTROLS TO WORK FOR NEW USE.
- 3 REPLACE EXISTING LUMINAIRES. EXISTING LIGHTING CONTROLS AND BRANCH CIRCUITS TO REMAIN.
- 4 NEW LIGHTING AND NEW CONTROLS. EXISTING BRANCH CIRCUITS TO REMAIN.
- 5 NEW LIGHTING, NEW CONTROLS AND NEW BRANCH CIRCUITS.
- BRANCH WIRING & DEVICES
- 0 NO SCOPE OF WORK.
- 1 REPLACE DEVICES (SWITCHES AND RECEPTACLES).
- 2 MINIMAL MODIFICATION OF EXISTING AND/OR ADDITION. EXISTING BRANCH CIRCUITS TO REMAIN.
- 3 PARTIAL MODIFICATION OF EXISTING AND/OR ADDITION. EXISTING BRANCH CIRCUITS TO REMAIN.
- 4 MAJOR MODIFICATION OF EXISTING AND/OR ADDITION. NEW BRANCH CIRCUITS TO POWER PANELS.
- 5 PROVIDE ELECTRICAL DEVICES AND BRANCH CIRCUIT WIRING TO POWER PANELS.
- TELECOMM & DATA
- 0 NO SCOPE OF WORK.
- 1 STAND ALONE SYSTEM SERVING SELECT AREAS TO BE BACK FED FROM NEW TELECOM SYSTEM.
- 5 ALL NEW OUTLETS AND CABLING BACK TO TELECOM ROOMS.
- FIRE ALARM
- 5 REMOVE EXISTING FIRE ALARM SYSTEM AND PROVIDE COMPLETELY NEW FIRE ALARM SYSTEM WITH VOICE EVAC PER CODE.
- NOTES
- 1 DISCONNECT ELECTRICAL EQUIPMENT. COORDINATE REMOVAL WITH GENERAL CONTRACTOR.



SEBA

ARCHITECTURE
URBAN DESIGN + PLANNING
INTERIOR DESIGN
338 NW 5TH AVENUE
PORTLAND OREGON 97209
P: 503.445.7372
F: 503.445.7365
SERAPDX.COM

GLUMAC

900 SW Fifth Ave., Suite 1600
Portland, OR 97204
T: 503.227.5286 F: 503.274.7874
www.glumac.com
Job No. 0213.0545
Contact: RON BAYLES
engineers for a sustainable future

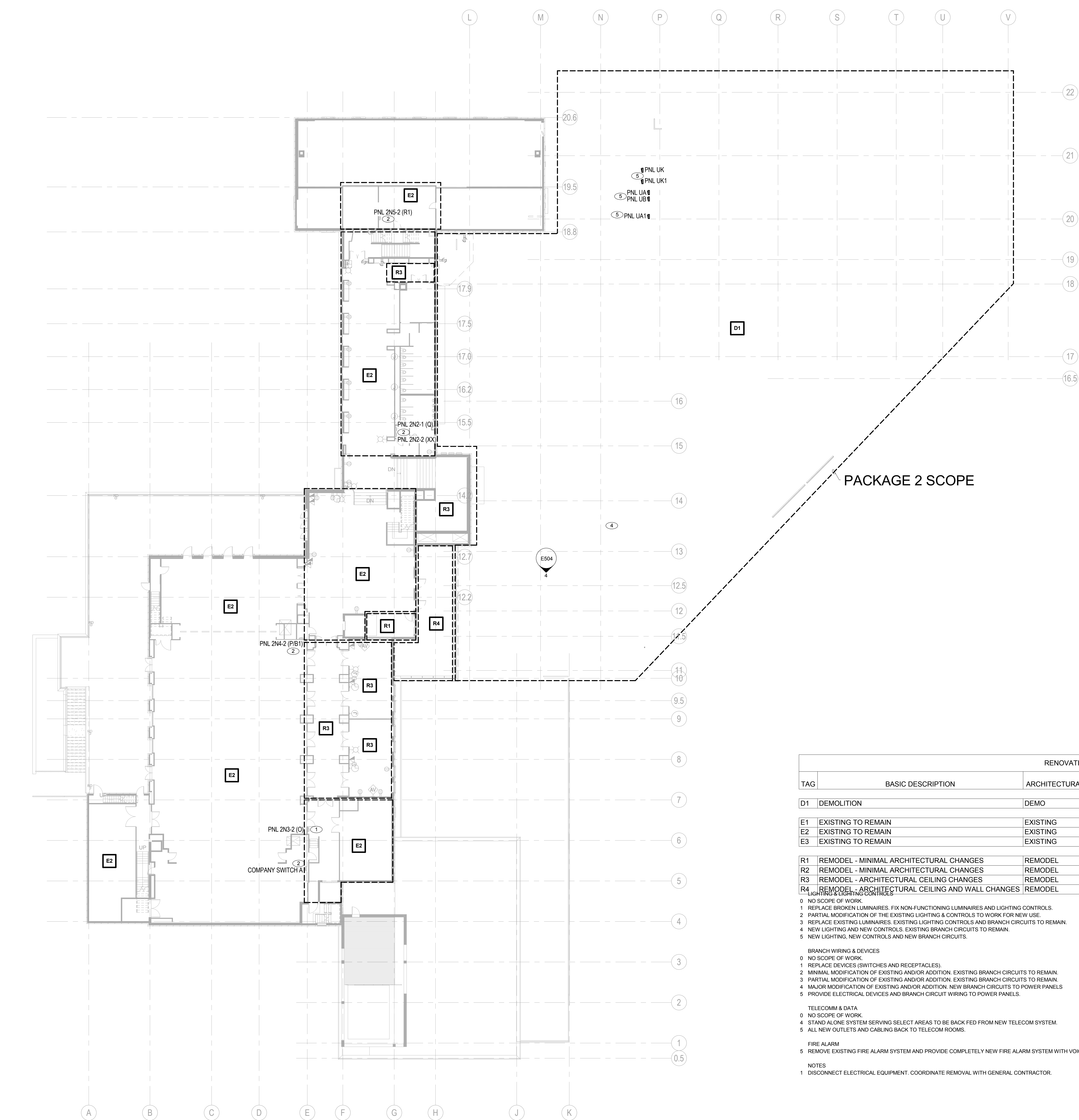
ERB MEMORIAL UNION - RENOVATION & ADDITION
PACKAGE 4
UNIVERSITY OF OREGON
13TH AVENUE & UNIVERSITY STREET

REVISIONS

CHECKED BY:
ISSUE DATE: 2014.03.14
PROJECT NO.: 11045

DEMO PLAN -
MEZZANINE
LEVEL -
ELECTRICAL

DE101m



1 LEVEL 2 FLOOR PLAN - OVERALL - DEMO ELECTRICAL
SCALE: 1/16" = 1'-0"

GENERAL NOTES

- A. REFER TO SHEET DE000 FOR DEMOLITION AND PROJECT GENERAL NOTES, LEGENDS AND ABBREVIATIONS.

SHEET NOTES

1. REPLACE EXISTING BRANCH PANEL AND REFEED FROM NEW DISTRIBUTION. RECONNECT BRANCH CIRCUITS TO NEW PANEL. REFER TO SINGLE LINE DIAGRAMS.
2. EXISTING EQUIPMENT TO REMAIN. REFEED FROM NEW DISTRIBUTION. REFER TO SINGLE LINE DIAGRAMS.
3. ELECTRICAL EQUIPMENT TO STAY IN SERVICE UNTIL PACKAGE #5. BACK FEED FROM EQUIPMENT INSTALL IN PRIOR PHASE.
4. DISCONNECT AND RECONNECT PHOTOVOLTAIC EQUIPMENT. PHOTOVOLTAIC EQUIPMENT WILL BE RECONNECTED ON ROOF OF NORTH BAR.
5. REMOVE EQUIPMENT INDICATED. REMOVE CONDUIT AND CONDUCTORS BACK TO PANEL. COORDINATE EQUIPMENT SHUTDOWN WITH OWNER.
6. DISCONNECT EQUIPMENT INDICATED AND RETURN TO OWNER.
7. TENANT SPACE. LIGHTING, POWER AND TELECOM PROVIDED BY TENANT.

RENOVATION MATRIX								
TAG	BASIC DESCRIPTION	ARCHITECTURAL	LIGHTING	LIGHTING CONTROLS	BRANCH WIRING & DEVICES	TELECOM & DATA	FIRE ALARM	COMMENTS
D1	DEMOLITION	DEMO						SEE NOTE 1
E1	EXISTING TO REMAIN	EXISTING	0	0	0	5	5	
E2	EXISTING TO REMAIN	EXISTING	1	2	2	5	5	
E3	EXISTING TO REMAIN	EXISTING	0	0	0	0	5	
R1	REMODEL - MINIMAL ARCHITECTURAL CHANGES	REMODEL	2	2	2	5	5	
R2	REMODEL - MINIMAL ARCHITECTURAL CHANGES	REMODEL	3	3	3	5	5	
R3	REMODEL - ARCHITECTURAL CEILING CHANGES	REMODEL	4	4	3	5	5	
R4	REMODEL - ARCHITECTURAL CEILING AND WALL CHANGES	REMODEL	5	5	4	5	5	

- 0 NO SCOPE OF WORK.
- 1 REPLACE BROKEN LUMINAIRES. FIX NON-FUNCTIONING LUMINAIRES AND LIGHTING CONTROLS.
- 2 PARTIAL MODIFICATION OF THE EXISTING LIGHTING & CONTROLS TO WORK FOR NEW USE.
- 3 REPLACE EXISTING LUMINAIRES. EXISTING LIGHTING CONTROLS AND BRANCH CIRCUITS TO REMAIN.
- 4 NEW LIGHTING AND NEW CONTROLS. EXISTING BRANCH CIRCUITS TO REMAIN.
- 5 NEW LIGHTING, NEW CONTROLS AND NEW BRANCH CIRCUITS.
- BRANCH WIRING & DEVICES
- 0 NO SCOPE OF WORK.
- 1 REPLACE DEVICES (SWITCHES AND RECEPTACLES).
- 2 MINIMAL MODIFICATION OF EXISTING AND/OR ADDITION. EXISTING BRANCH CIRCUITS TO REMAIN.
- 3 PARTIAL MODIFICATION OF EXISTING AND/OR ADDITION. EXISTING BRANCH CIRCUITS TO REMAIN.
- 4 MAJOR MODIFICATION OF EXISTING AND/OR ADDITION. NEW BRANCH CIRCUITS TO POWER PANELS.
- 5 PROVIDE ELECTRICAL DEVICES AND BRANCH CIRCUIT WIRING TO POWER PANELS.
- TELECOMM & DATA
- 0 NO SCOPE OF WORK.
- 4 STAND ALONE SYSTEM SERVING SELECT AREAS TO BE BACK FED FROM NEW TELECOM SYSTEM.
- 5 ALL NEW OUTLETS AND CABLING BACK TO TELECOM ROOMS.
- FIRE ALARM
- 5 REMOVE EXISTING FIRE ALARM SYSTEM AND PROVIDE COMPLETELY NEW FIRE ALARM SYSTEM WITH VOICE EVAC PER CODE.
- NOTES
- 1 DISCONNECT ELECTRICAL EQUIPMENT. COORDINATE REMOVAL WITH GENERAL CONTRACTOR.



SEBA

ARCHITECTURE
URBAN DESIGN + PLANNING
INTERIOR DESIGN

338 NW 5TH AVENUE
PORTLAND OREGON 97209
P: 503.445.7372
F: 503.445.7365
SERAPDX.COM

GLUMAC

900 SW Fifth Ave., Suite 1600
Portland, OR 97204
T: 503.227.5286 F: 503.274.7874
www.glumac.com
Job No. 02130545
Contact: RON BAYLES

engineers for a sustainable future™

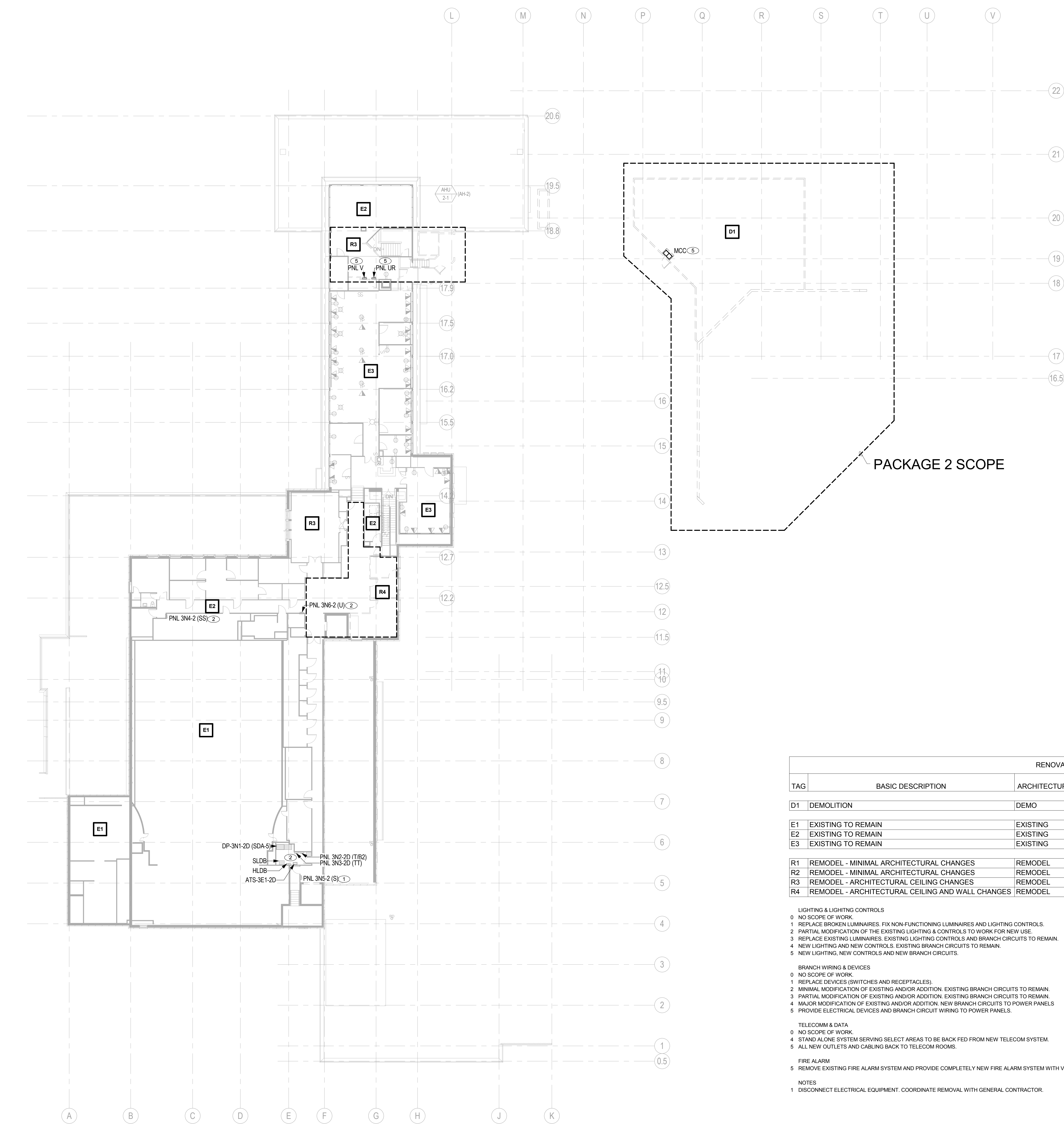
ERB MEMORIAL UNION - RENOVATION & ADDITION
PACKAGE 4
UNIVERSITY OF OREGON
13TH AVENUE & UNIVERSITY STREET

REVISIONS

CHECKED BY:
ISSUE DATE: 2014.03.14
PROJECT NO.: 11045

DEMO PLAN -
LEVEL 2 -
ELECTRICAL

DE102



1 LEVEL 3 FLOOR PLAN - OVERALL - DEMO ELECTRICAL
SCALE: 1/16" = 1'-0"

GENERAL NOTES

- A. REFER TO SHEET DE000 FOR DEMOLITION AND PROJECT GENERAL NOTES, LEGENDS AND ABBREVIATIONS.

SHEET NOTES

1. REPLACE EXISTING BRANCH PANEL AND REFEED FROM NEW DISTRIBUTION. RECONNECT BRANCH CIRCUITS TO NEW PANEL. REFER TO SINGLE LINE DIAGRAMS.
2. EXISTING EQUIPMENT TO REMAIN. REFEED FROM NEW DISTRIBUTION. REFER TO SINGLE LINE DIAGRAMS.
3. ELECTRICAL EQUIPMENT TO STAY IN SERVICE UNTIL PACKAGE #5. BACK FEED FROM EQUIPMENT INSTALL IN PRIOR PHASE.
4. DISCONNECT AND RECONNECT PHOTOVOLTAIC EQUIPMENT. PHOTOVOLTAIC EQUIPMENT WILL BE RECONNECTED ON ROOF OF NORTH BAY.
5. REMOVE EQUIPMENT INDICATED. REMOVE CONDUIT AND CONDUCTORS BACK TO PANEL. COORDINATE EQUIPMENT SHUTDOWN WITH OWNER.
6. DISCONNECT EQUIPMENT INDICATED AND RETURN TO OWNER.
7. TENANT SPACE. LIGHTING, POWER AND TELECOM PROVIDED BY TENANT.

RENOVATION MATRIX								
TAG	BASIC DESCRIPTION	ARCHITECTURAL	LIGHTING	LIGHTING CONTROLS	BRANCH WIRING & DEVICES	TELECOM & DATA	FIRE ALARM	COMMENTS
D1	DEMOLITION	DEMO						SEE NOTE 1
E1	EXISTING TO REMAIN	EXISTING	0	0	0	5	5	
E2	EXISTING TO REMAIN	EXISTING	1	2	2	5	5	
E3	EXISTING TO REMAIN	EXISTING	0	0	0	0	5	
R1	REMODEL - MINIMAL ARCHITECTURAL CHANGES	REMODEL	2	2	2	5	5	
R2	REMODEL - MINIMAL ARCHITECTURAL CHANGES	REMODEL	3	3	3	5	5	
R3	REMODEL - ARCHITECTURAL CEILING CHANGES	REMODEL	4	4	3	5	5	
R4	REMODEL - ARCHITECTURAL CEILING AND WALL CHANGES	REMODEL	5	5	4	5	5	

- LIGHTING & LIGHTING CONTROLS
- 0 NO SCOPE OF WORK.
 - 1 REPLACE BROKEN LUMINAIRES. FIX NON-FUNCTIONING LUMINAIRES AND LIGHTING CONTROLS.
 - 2 PARTIAL MODIFICATION OF THE EXISTING LIGHTING & CONTROLS TO WORK FOR NEW USE.
 - 3 REPLACE EXISTING LUMINAIRES. EXISTING LIGHTING CONTROLS AND BRANCH CIRCUITS TO REMAIN.
 - 4 NEW LIGHTING AND NEW CONTROLS. EXISTING BRANCH CIRCUITS TO REMAIN.
 - 5 NEW LIGHTING, NEW CONTROLS AND NEW BRANCH CIRCUITS.
- BRANCH WIRING & DEVICES
- 0 NO SCOPE OF WORK.
 - 1 REPLACE DEVICES (SWITCHES AND RECEPTACLES).
 - 2 MINIMAL MODIFICATION OF EXISTING AND/OR ADDITION. EXISTING BRANCH CIRCUITS TO REMAIN.
 - 3 PARTIAL MODIFICATION OF EXISTING AND/OR ADDITION. EXISTING BRANCH CIRCUITS TO REMAIN.
 - 4 MAJOR MODIFICATION OF EXISTING AND/OR ADDITION. NEW BRANCH CIRCUITS TO POWER PANELS.
 - 5 PROVIDE ELECTRICAL DEVICES AND BRANCH CIRCUIT WIRING TO POWER PANELS.
- TELECOMM & DATA
- 0 NO SCOPE OF WORK.
 - 1 STAND ALONE SYSTEM SERVING SELECT AREAS TO BE BACK FED FROM NEW TELECOM SYSTEM.
 - 5 ALL NEW OUTLETS AND CABLING BACK TO TELECOM ROOMS.
- FIRE ALARM
- 5 REMOVE EXISTING FIRE ALARM SYSTEM AND PROVIDE COMPLETELY NEW FIRE ALARM SYSTEM WITH VOICE EVAC PER CODE.
- NOTES
- 1 DISCONNECT ELECTRICAL EQUIPMENT. COORDINATE REMOVAL WITH GENERAL CONTRACTOR.



SERA

ARCHITECTURE
URBAN DESIGN + PLANNING
INTERIOR DESIGN

338 NW 5TH AVENUE
PORTLAND OREGON 97209
P: 503.445.7372
F: 503.445.7365
SERAPDX.COM

GLUMAC

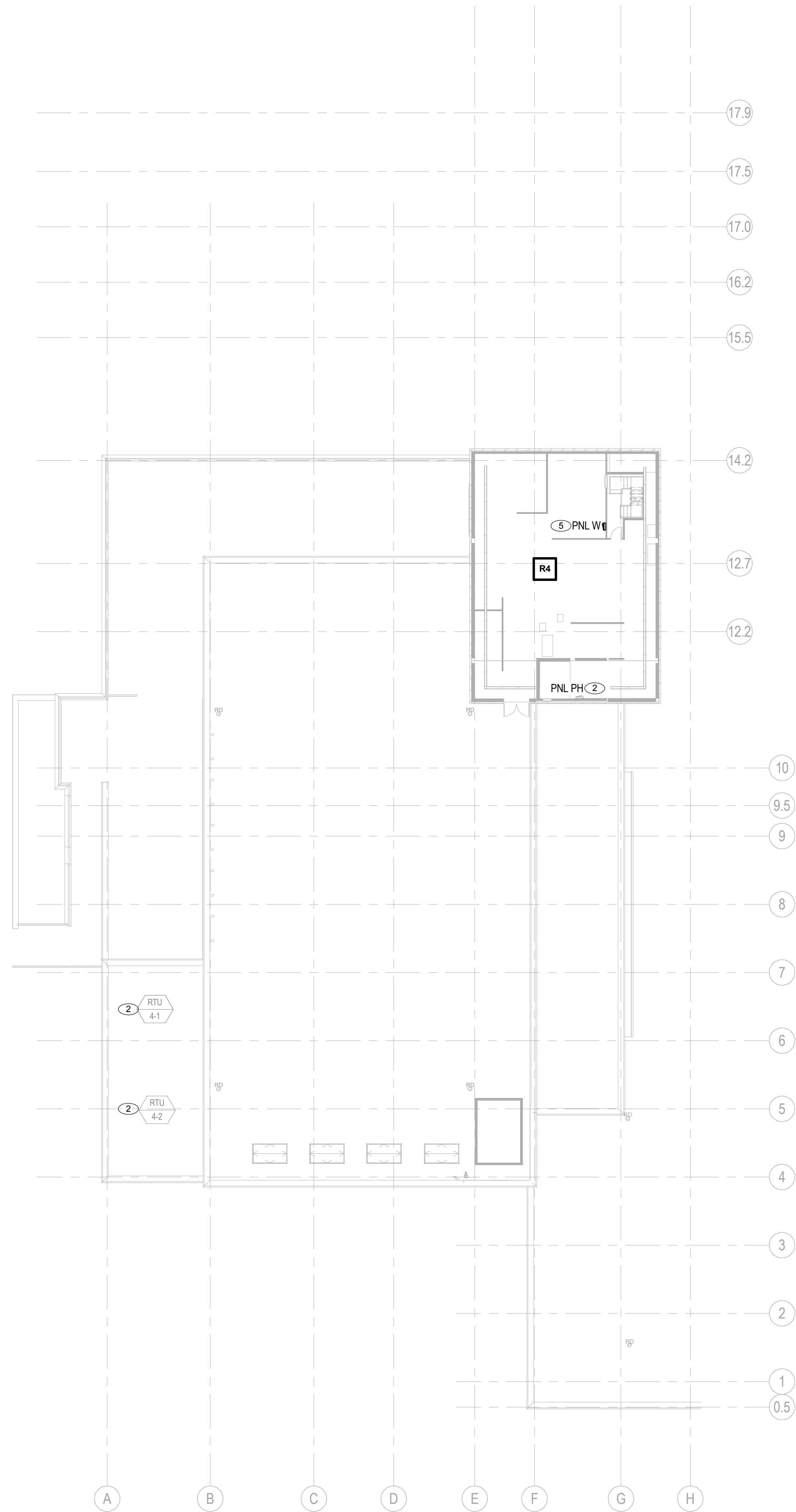
900 SW Fifth Ave., Suite 1600
Portland, OR 97204
T: 503.227.5286 F: 503.274.7874
www.glumac.com
Job No. 0213.0545
Contact: RON BAYLES
engineers for a sustainable future™

ERB MEMORIAL UNION - RENOVATION & ADDITION PACKAGE 4

UNIVERSITY OF OREGON
13TH AVENUE & UNIVERSITY STREET

REVISIONS		
CHECKED BY:	2014.03.14	
ISSUE DATE:	11045	
PROJECT NO.:		

DEMO PLAN -
LEVEL 3 -
ELECTRICAL
DE103



1 ROOF PLAN - DEMO - ELECTRICAL
SCALE: 1/16" = 1'-0"

SHEET NOTES

- A. REFER TO SHEET DE000 FOR DEMOLITION AND PROJECT GENERAL NOTES, LEGENDS AND ABBREVIATIONS.

SHEET NOTES

1. REPLACE EXISTING BRANCH PANEL AND REFEED FROM NEW DISTRIBUTION. RECONNECT BRANCH CIRCUITS TO NEW PANEL. REFER TO SINGLE LINE DIAGRAMS.
2. EXISTING EQUIPMENT TO REMAIN. REFEED FROM NEW DISTRIBUTION. REFER TO SINGLE LINE DIAGRAMS.
3. ELECTRICAL EQUIPMENT TO STAY IN SERVICE UNTIL PACKAGE #5. BACK FEED FROM EQUIPMENT INSTALL IN PRIOR PHASE.
4. DISCONNECT AND RECONNECT PHOTOVOLTAIC EQUIPMENT. PHOTOVOLTAIC EQUIPMENT WILL BE RECONNECTED ON ROOF OF NORTH BAR.
5. REMOVE EQUIPMENT INDICATED. REMOVE CONDUIT AND CONDUCTORS BACK TO PANEL. COORDINATE EQUIPMENT SHUTDOWN WITH OWNER.
6. DISCONNECT EQUIPMENT INDICATED AND RETURN TO OWNER.
7. TENANT SPACE. LIGHTING, POWER AND TELECOM PROVIDED BY TENANT.

RENOVATION MATRIX								
TAG	BASIC DESCRIPTION	ARCHITECTURAL	LIGHTING	LIGHTING CONTROLS	BRANCH WIRING & DEVICES	TELECOM & DATA	FIRE ALARM	COMMENTS
D1	DEMOLITION	DEMO						SEE NOTE 1
E1	EXISTING TO REMAIN	EXISTING	0	0	0	5	5	
E2	EXISTING TO REMAIN	EXISTING	1	2	2	5	5	
E3	EXISTING TO REMAIN	EXISTING	0	0	0	0	5	

R1	REMODEL - MINIMAL ARCHITECTURAL CHANGES	REMODEL	2	2	2	5	5	
R2	REMODEL - MINIMAL ARCHITECTURAL CHANGES	REMODEL	3	3	3	5	5	
R3	REMODEL - ARCHITECTURAL CEILING CHANGES	REMODEL	4	4	3	5	5	
R4	REMODEL - ARCHITECTURAL CEILING AND WALL CHANGES	REMODEL	5	5	4	5	5	

- 0 NO SCOPE OF WORK.
- 1 REPLACE BROKEN LUMINAIRES. FIX NON-FUNCTIONING LUMINAIRES AND LIGHTING CONTROLS.
- 2 PARTIAL MODIFICATION OF THE EXISTING LIGHTING & CONTROLS TO WORK FOR NEW USE.
- 3 REPLACE EXISTING LUMINAIRES. EXISTING LIGHTING CONTROLS AND BRANCH CIRCUITS TO REMAIN.
- 4 NEW LIGHTING AND NEW CONTROLS. EXISTING BRANCH CIRCUITS TO REMAIN.
- 5 NEW LIGHTING, NEW CONTROLS AND NEW BRANCH CIRCUITS.
- BRANCH WIRING & DEVICES
- 0 NO SCOPE OF WORK.
- 1 REPLACE DEVICES (SWITCHES AND RECEPTACLES).
- 2 MINIMAL MODIFICATION OF EXISTING AND/OR ADDITION. EXISTING BRANCH CIRCUITS TO REMAIN.
- 3 PARTIAL MODIFICATION OF EXISTING AND/OR ADDITION. EXISTING BRANCH CIRCUITS TO REMAIN.
- 4 MAJOR MODIFICATION OF EXISTING AND/OR ADDITION. NEW BRANCH CIRCUITS TO POWER PANELS.
- 5 PROVIDE ELECTRICAL DEVICES AND BRANCH CIRCUIT WIRING TO POWER PANELS.
- TELECOMM & DATA
- 0 NO SCOPE OF WORK.
- 4 STAND ALONE SYSTEM SERVING SELECT AREAS TO BE BACK FED FROM NEW TELECOM SYSTEM.
- 5 ALL NEW OUTLETS AND CABLING BACK TO TELECOM ROOMS.
- FIRE ALARM
- 5 REMOVE EXISTING FIRE ALARM SYSTEM AND PROVIDE COMPLETELY NEW FIRE ALARM SYSTEM WITH VOICE EVAC PER CODE.
- NOTES
- 1 DISCONNECT ELECTRICAL EQUIPMENT. COORDINATE REMOVAL WITH GENERAL CONTRACTOR.



ARCHITECTURE
URBAN DESIGN + PLANNING
INTERIOR DESIGN

338 NW 5TH AVENUE
PORTLAND OREGON 97209
P: 503.445.7372
F: 503.445.7365
SERAPDX.COM

GLUMAC

900 SW Fifth Ave., Suite 1600
Portland, OR 97204
T: 503.227.5286 F: 503.274.7674
www.glumac.com
Job No. 0213.00545
Contact: RON BAYLES
engineers for a sustainable future™

ERB MEMORIAL UNION - RENOVATION & ADDITION PACKAGE 4

UNIVERSITY OF OREGON
13TH AVENUE & UNIVERSITY STREET

REVISIONS

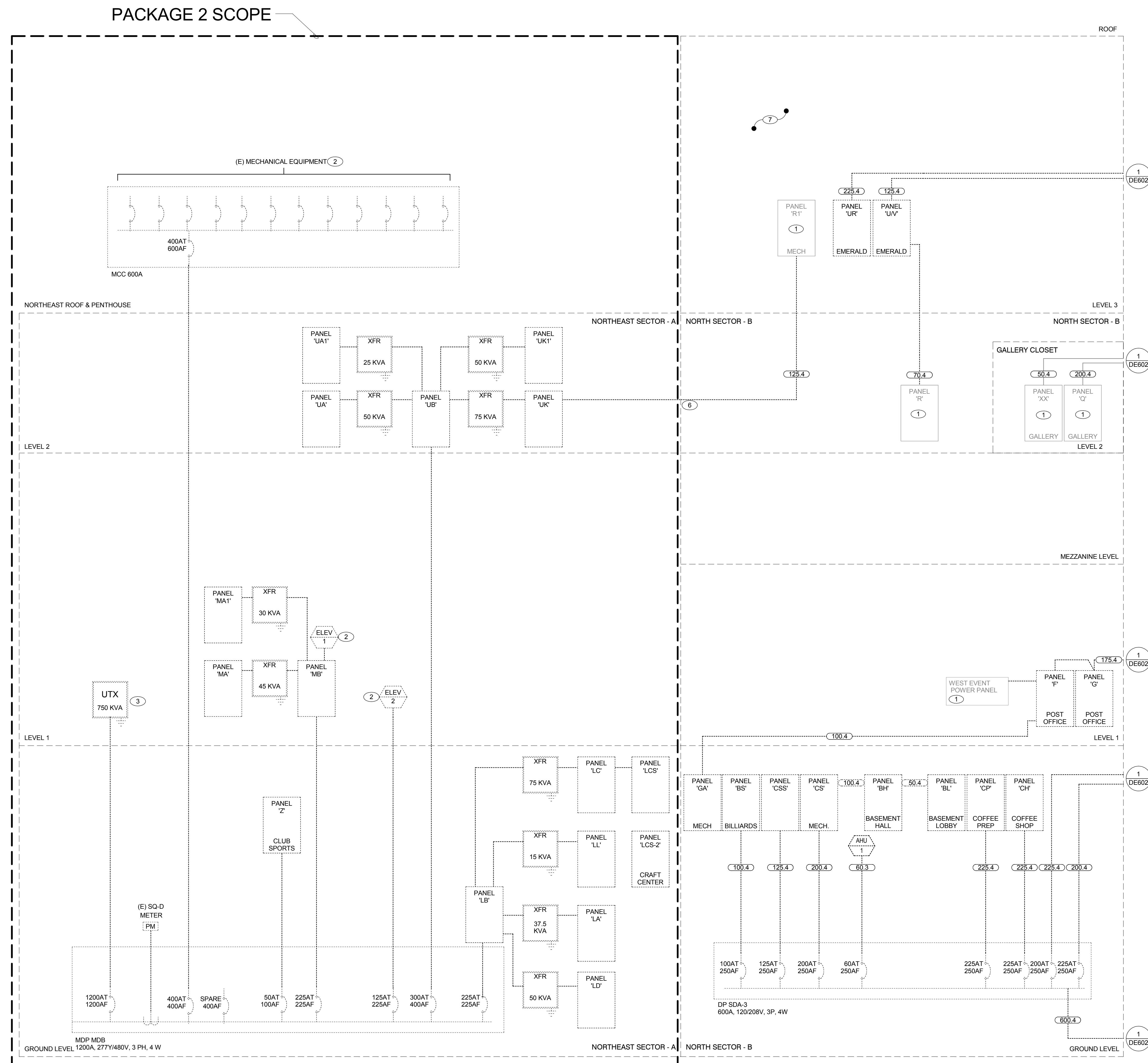
CHECKED BY:
ISSUE DATE: 2014.03.14
PROJECT NO: 11045

DEMO PLAN -
ROOF -
ELECTRICAL

DE110

1/16" = 1'-0"
0 16'-0" 32'-0" 48'-0" 64'-0"

- REMOVED IN PACKAGE 4/5 PHASE
 - - - - - REMOVED IN PACKAGE 1 PHASE
 _____ EXISTING TO REMAIN



1 SINGLE-LINE DIAGRAM - DEMO - NORTH
SCALE: 1/8" = 1'-0"

SCALE: 1/8" = 1'-0"

SHEET NOTES

- 1 1970'S BUILDING TO BE DEMOLISHED. ALL EXISTING BACKBONE CABLING TERMINATED WITHIN THE BUILDING ENTRANCE FACILITY TO BE PULLED BACK, RE-ROUTED AND RE-TERMINATED AT NEW BUILDING ENTRANCE FACILITY PROVIDED UNDER PACKAGE #1 FOR TEMPORARY USE DURING CONSTRUCTION. WORK ASSOCIATED WITH INCOMING SERVICE CABLING FROM THE CAMPUS NETWORK INFRASTRUCTURE IS PROVIDED BY OWNER.

SEBA

ARCHITECTURE
URBAN DESIGN + PLANNING
INTERIOR DESIGN
338 NW 5TH AVENUE
PORTLAND OREGON 97209
P: 503.445.7372
F: 503.445.7365
SERAPDX.COM

GLUMAC

900 SW Fifth Ave., Suite 1600
Portland, OR 97204
T: 503.227.5286 F: 503.274.7874
www.glumac.com
Job No: 02-13-0545
Contact: RON BAYLES
engineers for a sustainable future

ERB MEMORIAL UNION - RENOVATION & ADDITION
PACKAGE 4
UNIVERSITY OF OREGON
13TH AVENUE & UNIVERSITY STREET

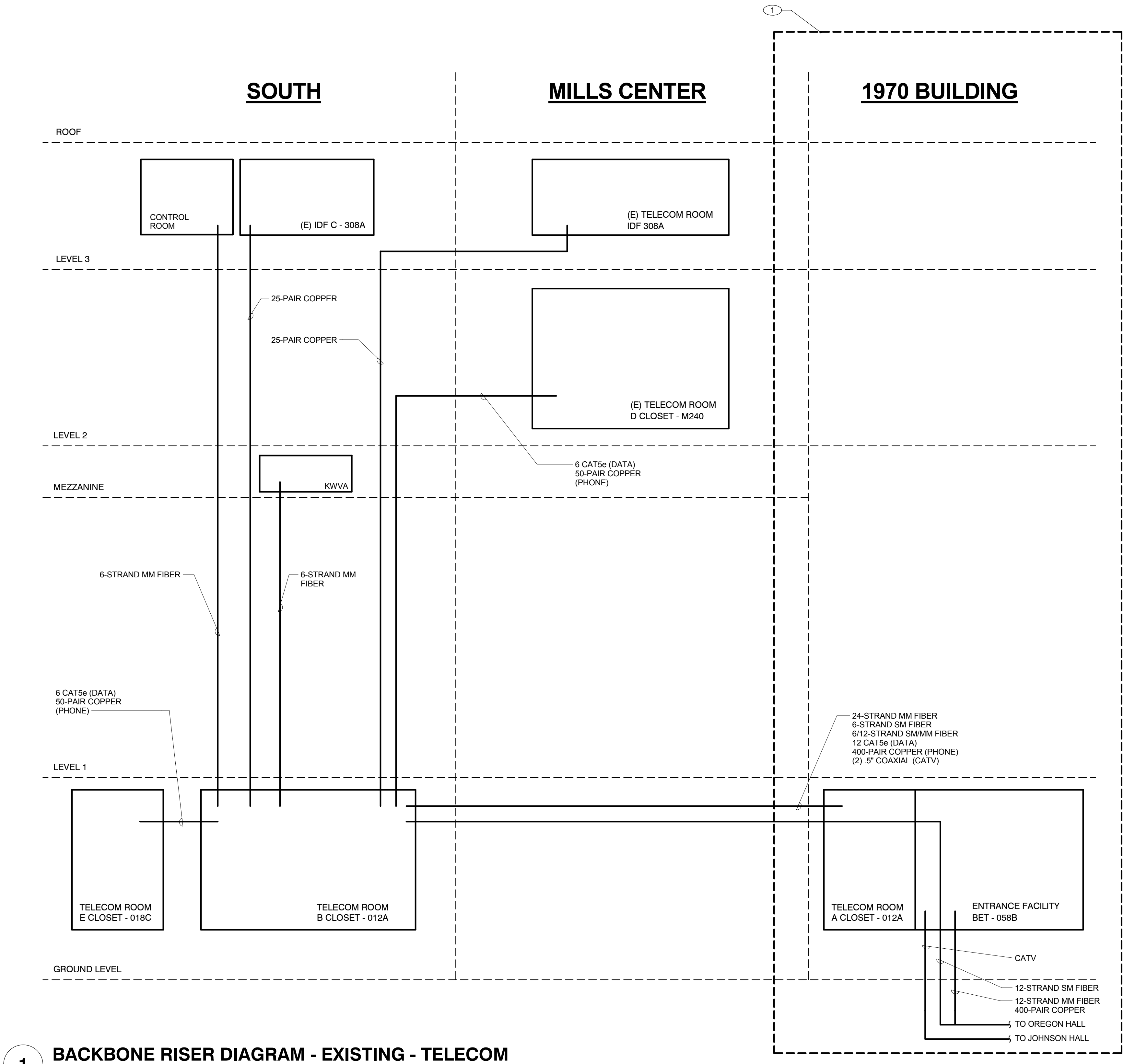
REVISIONS

CHECKED BY:
ISSUE DATE: 2014.03.14
PROJECT NO: 11045

SINGLE-LINE
DIAGRAMS -
DEMO -
TELECOM

DE603

50% CONSTRUCTION DOCUMENTS



1 BACKBONE RISER DIAGRAM - EXISTING - TELECOM
SCALE: 1" = 1'-0"