

University of Oregon

Erb Memorial Union Expansion & Renovation

Restroom Work session

CRITERIA FOR SELECTION OF ACCESSORIES

- Reduce the spread of disease
- Maximum Accessibility
- Waste Reduction
- Durability
- Ease of Maintenance
- Clean aesthetic



PLUMBING FIXTURES

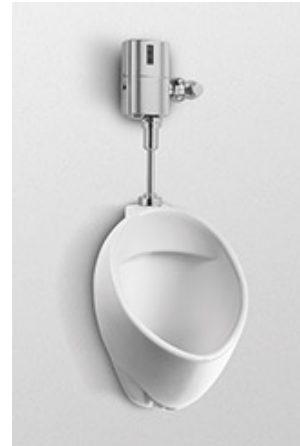
WALL HUNG TOILET -
KOHLER



URINAL
OPTION 1 -
KOHLER



URINAL
OPTION 2 -
TOTO



URINAL
OPTION 3 -
KOHLER



ZURN FLUSH VALVE



PLUMBING FIXTURES

LAVATORY AT COUNTERS
- KOHLER



LAVATORY FAUCET
OPTION 1 - TOTO



LAVATORY FAUCET
OPTION 2 – AMERICAN
STANDARD



LAVATORY FAUCET
OPTION 3 - ZURN



WALL HUNG LAVATORY -
KOHLER



FOOT WASH FAUCET -
TOTO





FINISHES / AESTHETICS



ACCENT TILE ON WALL ADJACENT TO THE MIRROR FOR MAXIMUM IMPACT



ACCENT TILE IS WHITE ON WHITE



EXAMPLE INSTALL IMAGE OF TILE

TOILET ROOM ACCESSORIES

CAMPUS STANDARD
PAPER TOWEL DISPENSER



FACILITIES PREFERRED
PAPER TOWEL DISPENSER



SERA PROPOSED TOUCHLESS
AIR DRYER



CAMPUS STANDARD SURFACE
MOUNTED WASTE



SERA PROPOSED FULLY
RECESSED WASTE
RECEPTACLE



TOILET ROOM ACCESSORIES

CAMPUS STANDARD TOILET
PAPER DISPENSER



FACILITIES PREFERRED TOILET
PAPER DISPENSER



CAMPUS STANDARD SEAT
COVER DISPENSER



FACILITIES PREFERRED SEAT
COVER DISPENSER



TOILET ROOM ACCESSORIES

CAMPUS STANDARD WALL MOUNTED SOAP DISPENSER



FACILITIES PREFERRED, TOUCH PUMP SOAP DISPENSER



SERA PROPOSED DECK MOUNTED SOAP DISPENSER (TOUCHLESS)



SERA PROPOSED WALL MOUNTED SOAP DISPENSER (TOUCHLESS)



TOILET ROOM ACCESSORIES

CAMPUS STANDARD
HYGIENE PRODUCT
DISPENSER



SERA PROPOSED HYGIENE
PRODUCT VENDOR
(RECESSED)



CAMPUS STANDARD HYGIENE
PRODUCT DISPOSAL



TOILET ROOM ACCESSORIES

BABY CHANGING STATION
(RECESSED)



HANDS FREE DOOR OPENER



CAMPUS STANDARD TOILET ROOM ACCESSORIES

PAPER TOWEL DISPENSER: <http://perrincraft.com/notouch.php>

WASTE RECEPTACLE:

<http://www.bobrick.com/washroomaccessories/Pages/ProductDetails.aspx?Product+Number%3dB-277>

DECK MOUNTED SOAP DISPENSER: no standard listed

WALL MOUNTED SOAP DISPENSER:

[http://eaccess.amsan.com/03/index.php?loc=items_detail&data\[history\]=2;25000;25075;&data\[catalog\]=1&data\[itemcode\]=IMP9352](http://eaccess.amsan.com/03/index.php?loc=items_detail&data[history]=2;25000;25075;&data[catalog]=1&data[itemcode]=IMP9352)

TOILET PAPER DISPENSER:

[https://eaccess.amsan.com/03/index.php?loc=items_detail&data\[history\]=2000;2050;002;25000;25575;&data\[catalog\]=1&data\[itemcode\]=GPT58250](https://eaccess.amsan.com/03/index.php?loc=items_detail&data[history]=2000;2050;002;25000;25575;&data[catalog]=1&data[itemcode]=GPT58250)

SEAT COVER DISPENSER:

[http://eaccess.amsan.com/03/index.php?loc=items_detail&data\[major\]=1&data\[keys\]=57748&data\[catalog\]=1&data\[itemcode\]=GPT57748](http://eaccess.amsan.com/03/index.php?loc=items_detail&data[major]=1&data[keys]=57748&data[catalog]=1&data[itemcode]=GPT57748)

HYGIENE PRODUCT VENDOR:

<http://www.officedepot.com/a/products/324864/Rochester-Midland-Dual-Sanitary-Napkin-Dispenser/>

SANITARY NAPKIN DISPOSAL:

<http://www.bobrick.com/washroomaccessories/Pages/ProductDetails.aspx?Product+Number%3dB-270>

BABY CHANGING STATION: no standard listed

SERA PROPOSED TOILET ROOM ACCESSORIES

PAPER TOWEL DISPENSER: (FACILITIES PREFERRED) <http://www.torkusa.com/Search-page/?q=84TR>

PAPER TOWEL DISPENSER: (SERA PROPOSED) <http://airblade.dyson.com/>

RECESSED WASTE RECEPTACLE:

<http://www.bradleycorp.com/accessories/commercial/towel-waste/waste/diplomat-waste-receptacle>

DECK MOUNTED SOAP DISPENSER: <http://www.handdryersandmore.com/product/HDM-TC-ASD-750339.html>

WALL MOUNTED SOAP DISPENSER: <http://www.handdryersandmore.com/product/HDM-TC-ASD-750139.html>

TOILET PAPER DISPENSER: <http://www.torkusa.com/Search-page/?q=247549A>

SEAT COVER DISPENSER (FACILITIES PREFERRED): <http://www.torkusa.com/Search-page/?q=344088>

HYGIENE PRODUCT VENDOR:

<http://www.bradleycorp.com/accessories/commercial/napkin/vendors/contemporary-series-recessed-napkin-tampon-vendor>

SANITARY NAPKIN DISPOSAL: <http://www.bradleycorp.com/accessories/commercial/napkin/disposals/diplomat-napkin-disposal>

HANDS FREE DOOR OPENER: <http://stepnpull.com/>

BABY CHANGING STATION:

<http://www.bobrick.com/washroomaccessories/Pages/ProductDetails.aspx?Product+Number%3dKB110-SSRE>

TOILET PARTITIONS

TOILET ROOM PARTITIONS

Design team is aware of campus standard for floor mounted, overhead braced, solid plastic toilet partitions. Both standard and full privacy partitions will need to be specified to accommodate requirements in Gender Inclusive, Mens and Womens restrooms. Based on preliminary research the following manufacturers are able to meet the requirements for solid plastic and full privacy partitions. The specification will be open, color TBD upon award.

Metpar: Overhead braced partitions in HDPE (Corinthian) and Full privacy partitions (Dorian)

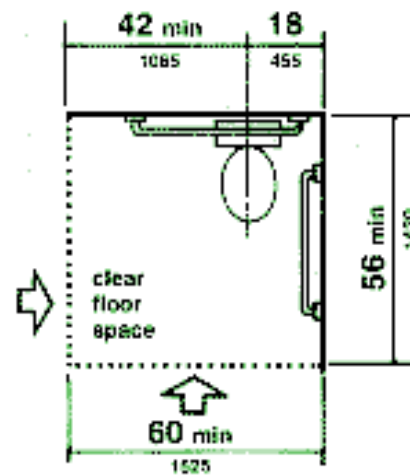
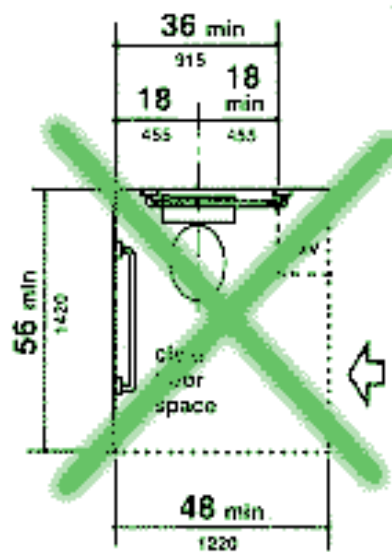
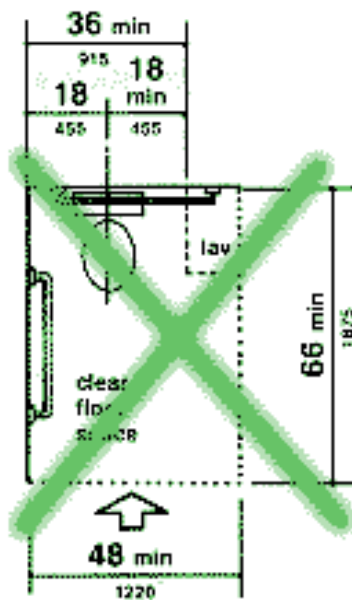
Global Partitions: Offers Ultimate Privacy and Floor Anchored / Overhead Braced in HDPE.

Bradley: Bradmar solid plastic toilet partitions – No site and regular series line are available with solid plastic partitions.

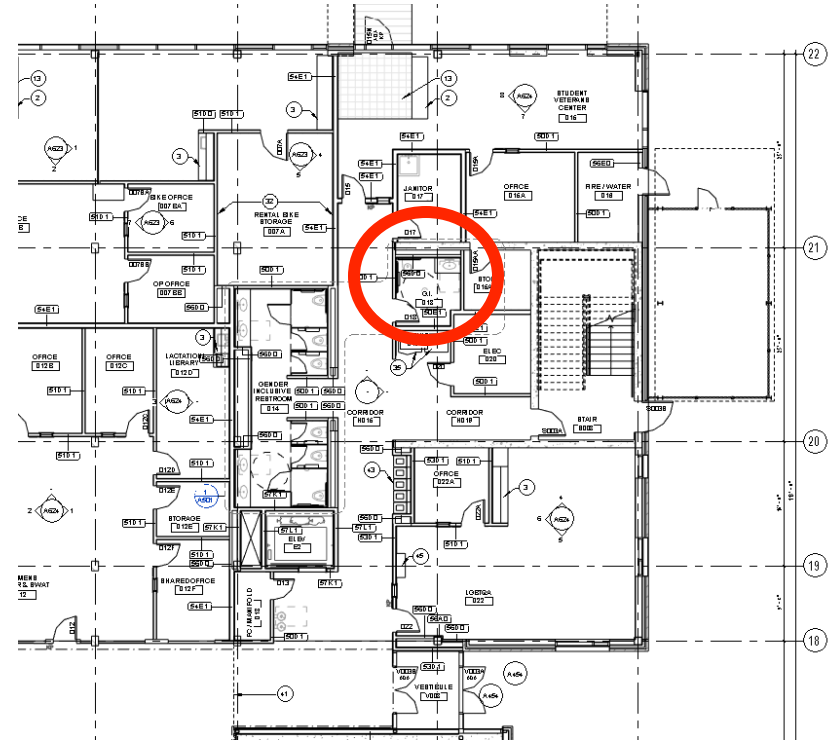
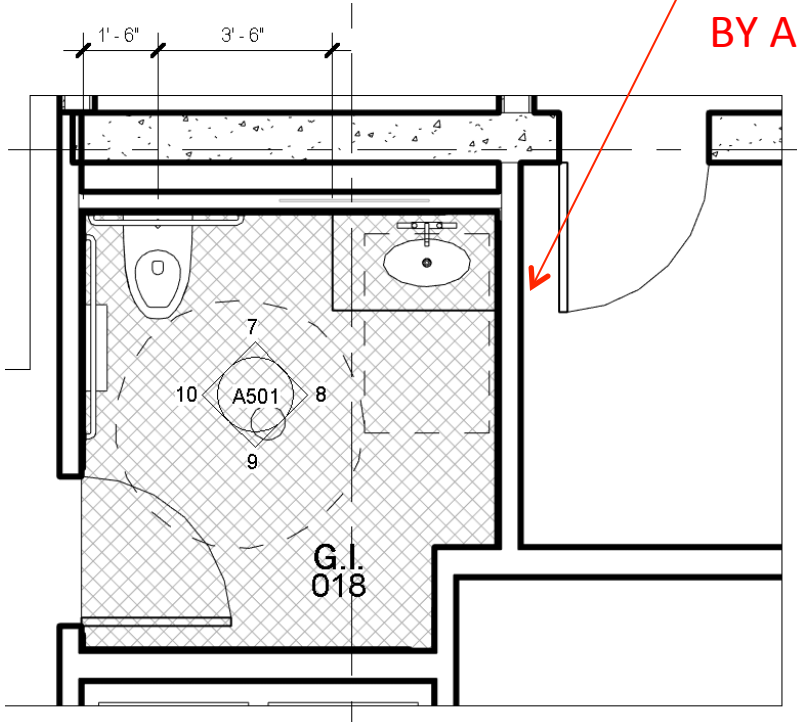


ACCESSIBILITY

ACCESSIBLE DESIGN REQUESTED PER UO

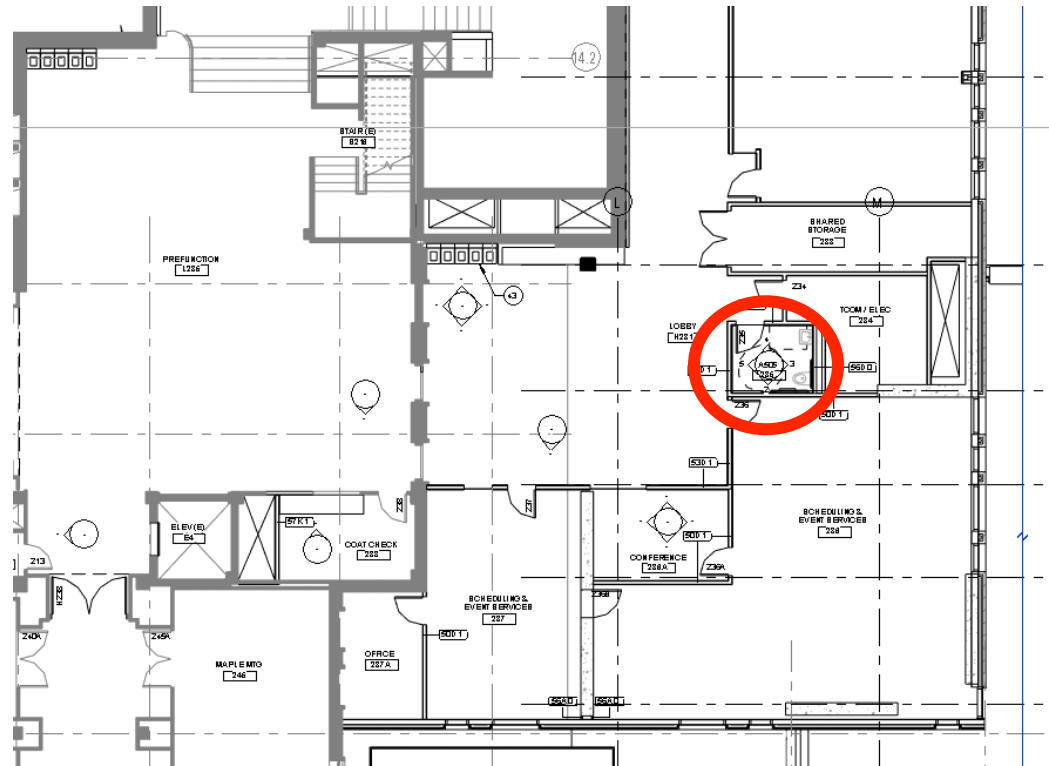
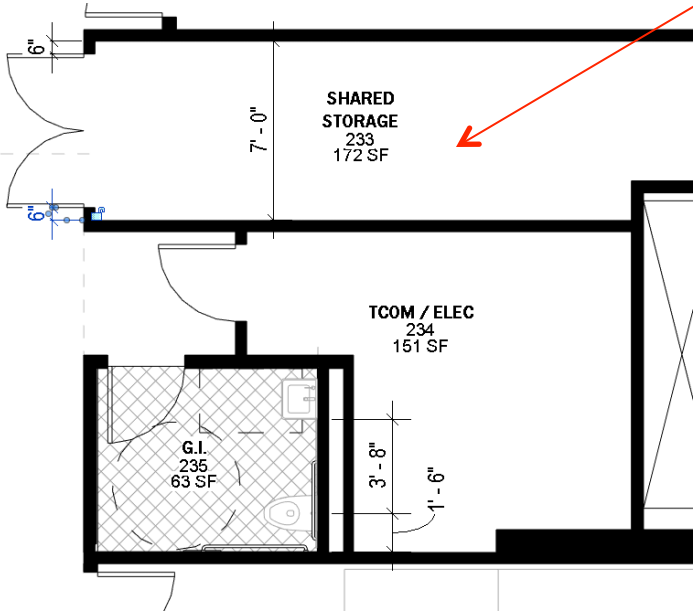


ADJACENT STORAGE
ROOM IS REDUCED
BY APPX 10 SF

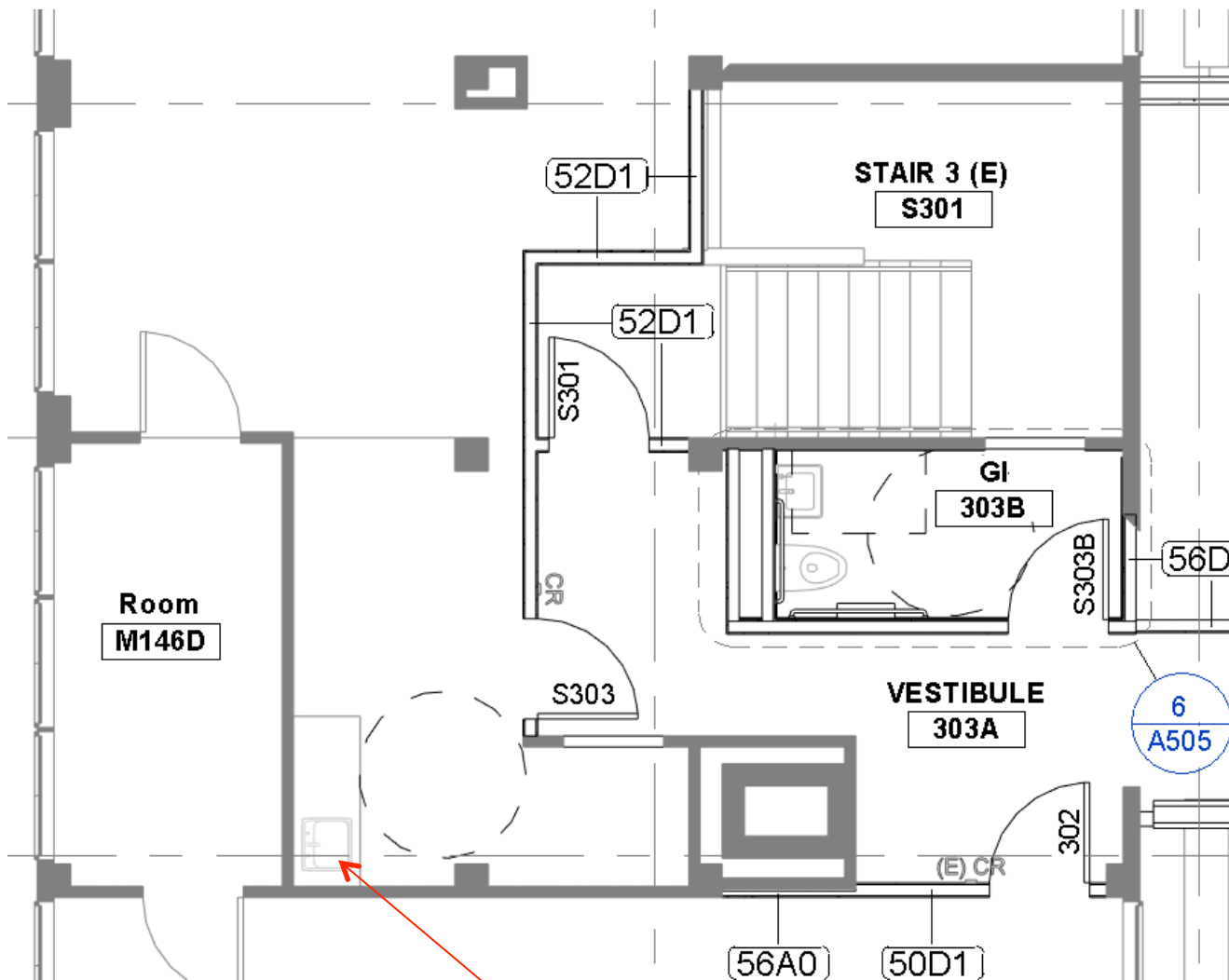


NORTH WING – GROUND LEVEL – GENDER INCLUSIVE SINGLE RESTROOM

Adjacent storage room is reduced from 8'-8" in width to 7'-0"

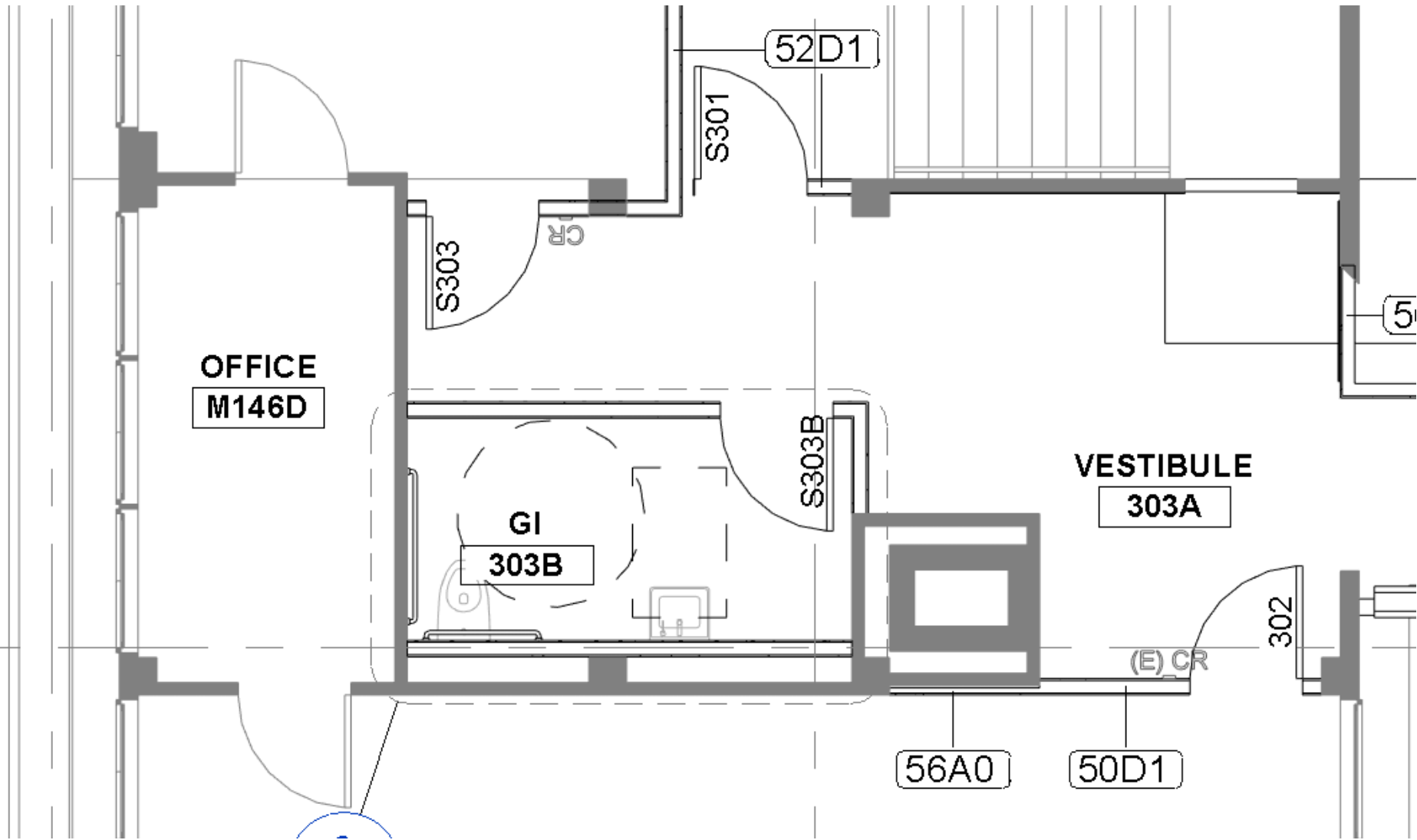


LEVEL TWO – CONFERENCE CENTER SINGLE RESTROOM



LEVEL THREE – SINGLE
OCCUPANT RESTROOM

Original design proposed as an alternate to Oregonized in order to minimize cost by saving SAIT's existing sink, minimize impact to their space and to minimize the scope in this area per UO request



LEVEL THREE – SINGLE
OCCUPANT RESTROOM

TILE LOCATIONS