

Erb Memorial Union Expansion & Renovation

QUESTION **ANSWER**

HIGHLIGHTS AND OBSERVATIONS OF RECENT TRIPS

STUDENT UNIONS



Student Union Tours
EMU User Group
August 29-31, 2011

This tour was a valuable use of time and resources for the user group. It served as a great team building exercise and gave the user group some common visuals and experience to draw on. Though there were many great ideas for us, particularly at OSU, in regard to conferencing, food service and back of the house; in many cases I believe we saw more what not to do. One important realization for me was the recognition that while there are some similarities in the offerings, challenges and opportunities of all the unions including EMU, what will make an extraordinary new EMU, will be to take advantage of capturing and reflecting what is uniquely Oregon and special about the EMU. Two examples of that concept that really stood out: sustainability, and the prominence of the student experience.

Leaving Ohio I was struck by the difference in how core values are integrated into the mission of the student unions we visited compared to U of O. The culture and infrastructure at the EMU supports student initiative with an expectation that students take the lead on programming and ownership of the process and outcome. While this can be difficult and messy at times, the trade-off is the overall student experience and life skills learned. This should be one of the “uniquely Oregon” aspects we celebrate in the new EMU.

OHIO STATE UNIVERSITY

Ohio State University

Highlights

Good collaboration with other departments

Students involved in the entire process

Actively pursued alumni (stories, donors, young people, etc)

University branding (cool but excessive)

Art was in all areas of the building rather than in one or two galleries

Able to tear down old union to construct the new one (no renovation)

Large enough to host big events (concerts/speakers/etc)

Access (loading dock, kitchen/food prep, storage, etc) was well thought out

Used some materials from previous building (wood floors/stones/doors, etc)

Parking was available

Lots of fund raising opportunities build in to the design

Nice outdoor patio/gas fire pit in the shape of an “O”

Good collaboration with academic departments (like cooking, hospitality, etc)

Nice use of natural light throughout the building

Bronze “Brutus” the Buckeye draws traffic into the building (to have photos taken with it)

Bar/Pub is working well in this building (have not had problems with alcohol)

Giant food pulper was awesome!

Nice Ohio themes throughout the building (art, history, décor, cartoon room)

Lots of multiuse spaces (dance room, demonstration food kitchen, computer counter/lounge area, etc)

Lots of unique meeting spaces (spirituality room, round room, dressing rooms for large performers, etc)

Removable counter/kiosks on wheels that push into the walls (rather than tabling in the building)

One of the student organization spaces had whiteboard walls (could write and erase)

Interactive areas throughout the entire building

Self-guided tour throughout the building with signage and numbers to call (to learn more)

Multiple loading docks with a drive in-out flow

Direct access from loading dock to refrigerator/freezer space for food deliveries

Well planned storage spaces

Students can use their meal points in the union food venues

Concerns

Student organization spaces were not prominent in high traffic areas (for a student union)

Traffic flow in food areas (school was not in session during our visit)

Lots of diversity with interior design (each space was very unique but could be an operational nightmare)

Limited outdoor space (only one sitting area outdoors)

Ohio State University

Ohio Union



Relevance to Erb Memorial Union

- LEED™ Silver Certification
- Dining options
- Administrative offices
- Meeting spaces
- Social hub
- Multipurpose spaces
- Copy center
- Student organization spaces
- Student lounge spaces
- Performance hall, theater space and ballroom
- Computer lab
- Retail center



The new Ohio Union is a truly innovative and groundbreaking example of a student union. One of the largest student unions in the nation, its wide-ranging accommodations include a food court in addition to a number of stand-alone food/beverage venues; concert hall and various performance spaces; a truly massive ballroom; numerous conference and meeting rooms; and a large and extremely well appointed suite of student organization offices.

Architect:

Moody + Nolan, Inc.

Location:

Columbus, Ohio

School Type:

Urban

Enrollment:

38,479-Undergraduate; 13,341-Postgraduates

Size:

321,000 square feet

Construction Cost:

\$118,000,000

Funding Source:

76% Student Fees, 15% Institutional, 9% Private Donation

Timeline:

Design Began: 2004; Design Completion: 2007

Year Completion: 2010

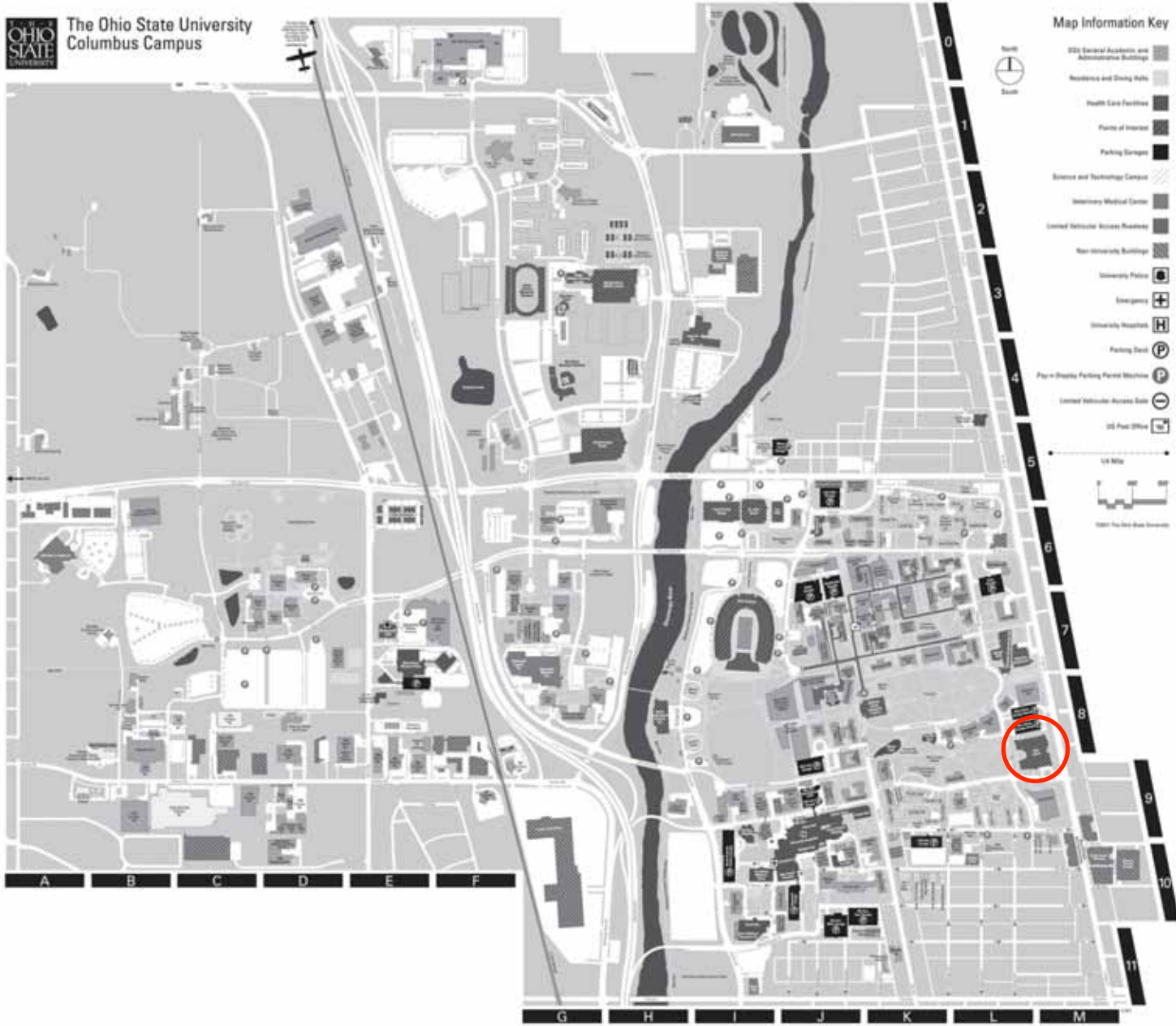
Certifications/Awards:

LEED™ Silver



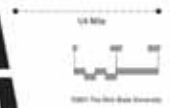


The Ohio State University
Columbus Campus

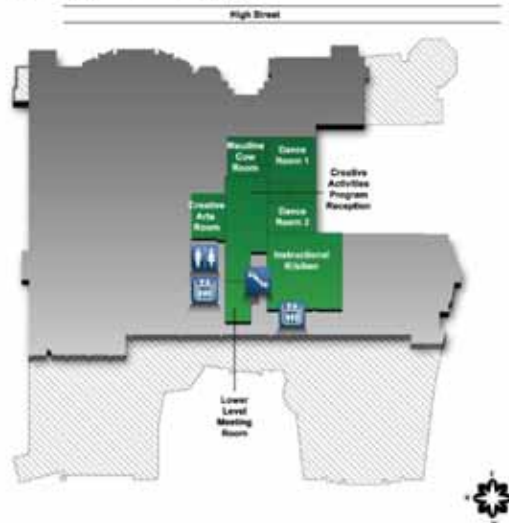


Map Information Key

- OSU Central Academic and Administrative Buildings
- Residence and Dining Halls
- Health Care Facilities
- Points of Interest
- Parking Garages
- Science and Technology Campus
- University Medical Center
- Limited Vehicular Access Roadways
- New University Buildings
- University Police
- Emergency
- University Hospitals
- Parking Deck
- Pay-n-Display Parking Payment Machine
- Limited Vehicular Access Gate
- OSU Post Office



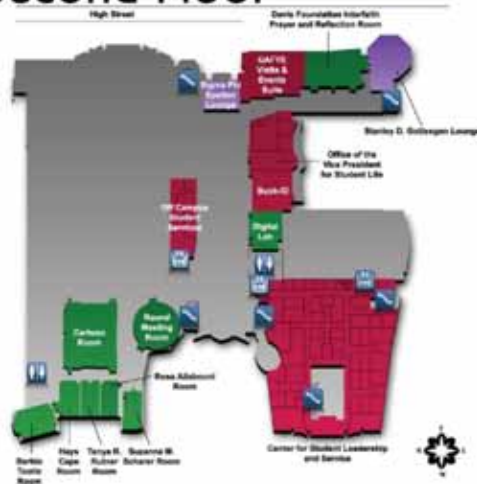
Lower Floor



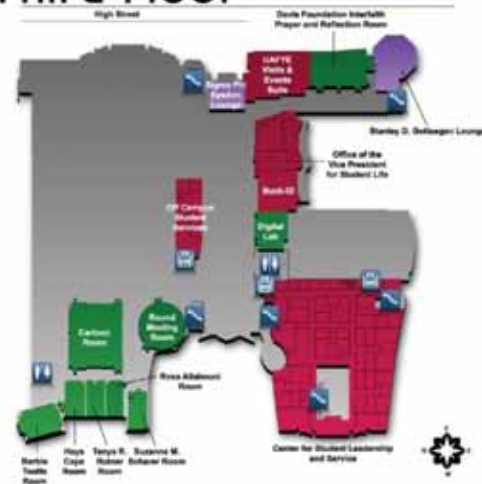
First Floor

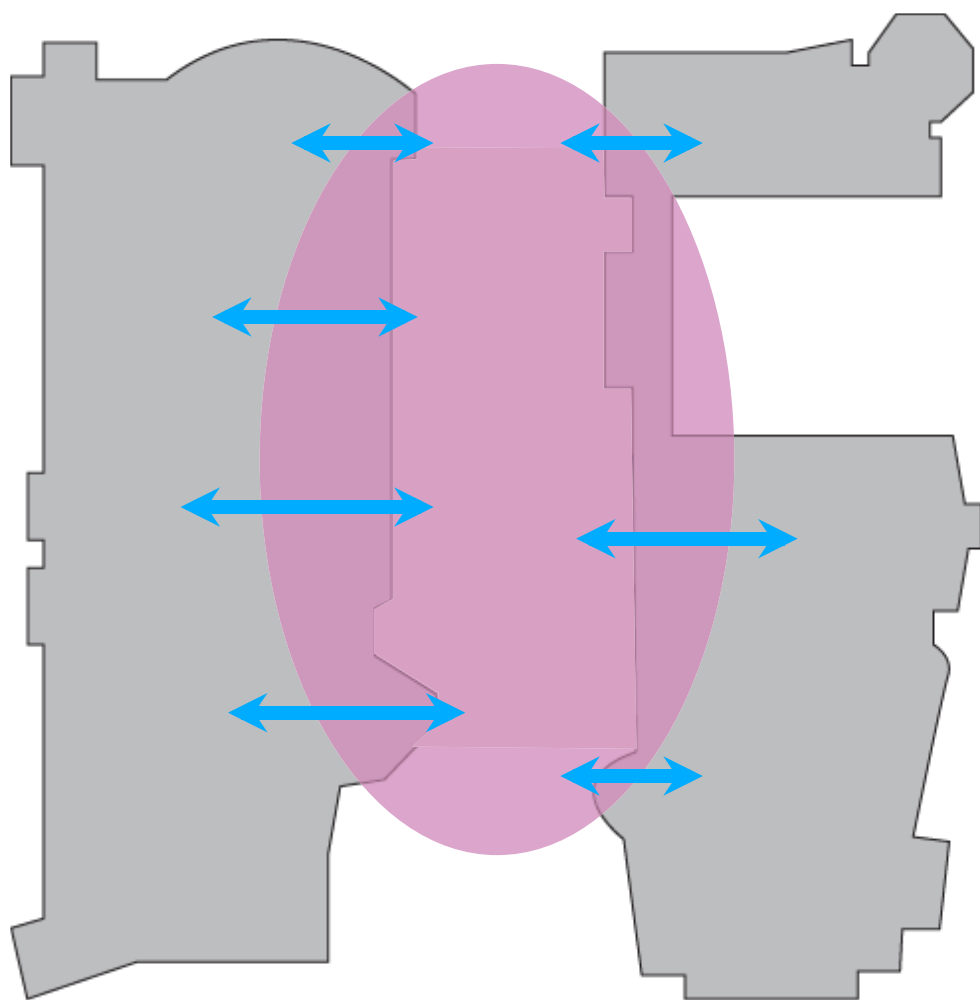


Second Floor



Third Floor










LESLIE H. WEINER



CLASS OF 1957, BS IN BUSINESS ADMINISTRATION
CHAIRMAN, PRESIDENT and CEO of
LIMITED BRANDS

Kent G. Pulcanis



Ohio State provided the foundation for what I've done for the rest of my professional life. My undergraduate experience in mathematics helped me through doctoral school to go on to become a professor.

JAMES CHASE AND "BOSS" OWENS



YEARS AT OHIO STATE 1933 - 1936
FIRST AMERICAN TO WIN FOUR OLYMPIC MEDALS IN TRACK AND FIELD

Michael Sosniak



Getting involved in student organizations is probably the most important thing you can do in college. It helps expand your life experience during your college years. It also facilitates the formation of lifelong relationships. The future opportunities in network with the people you will meet will be countless and invaluable.

PATRICIA HEATON



CLASS OF 1980, BA IN THEATER
ACTRESS, BEST KNOWN FOR **EVERYBODY LOVES RAYMOND**























OHIO UNIVERSITY

Ohio University

Highlights

Lots of patio space outside

Bookstore inside

Smaller theater/auditorium

Lots of natural light

Concerns

Giant escalators in the middle of the building (really limited the natural light capabilities of the building)

Conference Center feel – or mall with the escalators

Limited space for student groups

No room for growth

Limited program space in a high visible area

Not enough lounge areas (very sterile feel)

Food prep area was not well thought out (especially in the ballroom area)

Very small loading dock

Access to food areas

Access to theater (load-in/load-out area not adequate)

Ohio University

Baker University Student Center



Relevance to Erb Memorial Union

- Size and Budget
- 250-seat theater
- Campus pub
- Dining options
- Administrative offices
- Meeting spaces
- Social hub
- Exhibit spaces
- Student organization spaces
- Conference facilities
- Computer lab
- Retail center



The new, vibrant and engaging Baker University Student Center was sited to bridge the lower and upper parts of campus. The facility was designed to be compatible with the predominately Georgian architecture on campus. Throughout the center are offices for student organizations, meeting and conference rooms, a ballroom, food service and a 250-seat theater/auditorium. Also included is an adjacent, two-level, 350-space parking garage designed to match the student center.

Architect:

Moody + Nolan, Inc

Location:

Athens, Ohio

School Type:

Small Town

Enrollment:

22,647-Undergraduate; 3,261-Postgraduates

Size:

180,000 square feet

Construction Cost:

\$45,000,000

Funding Source:

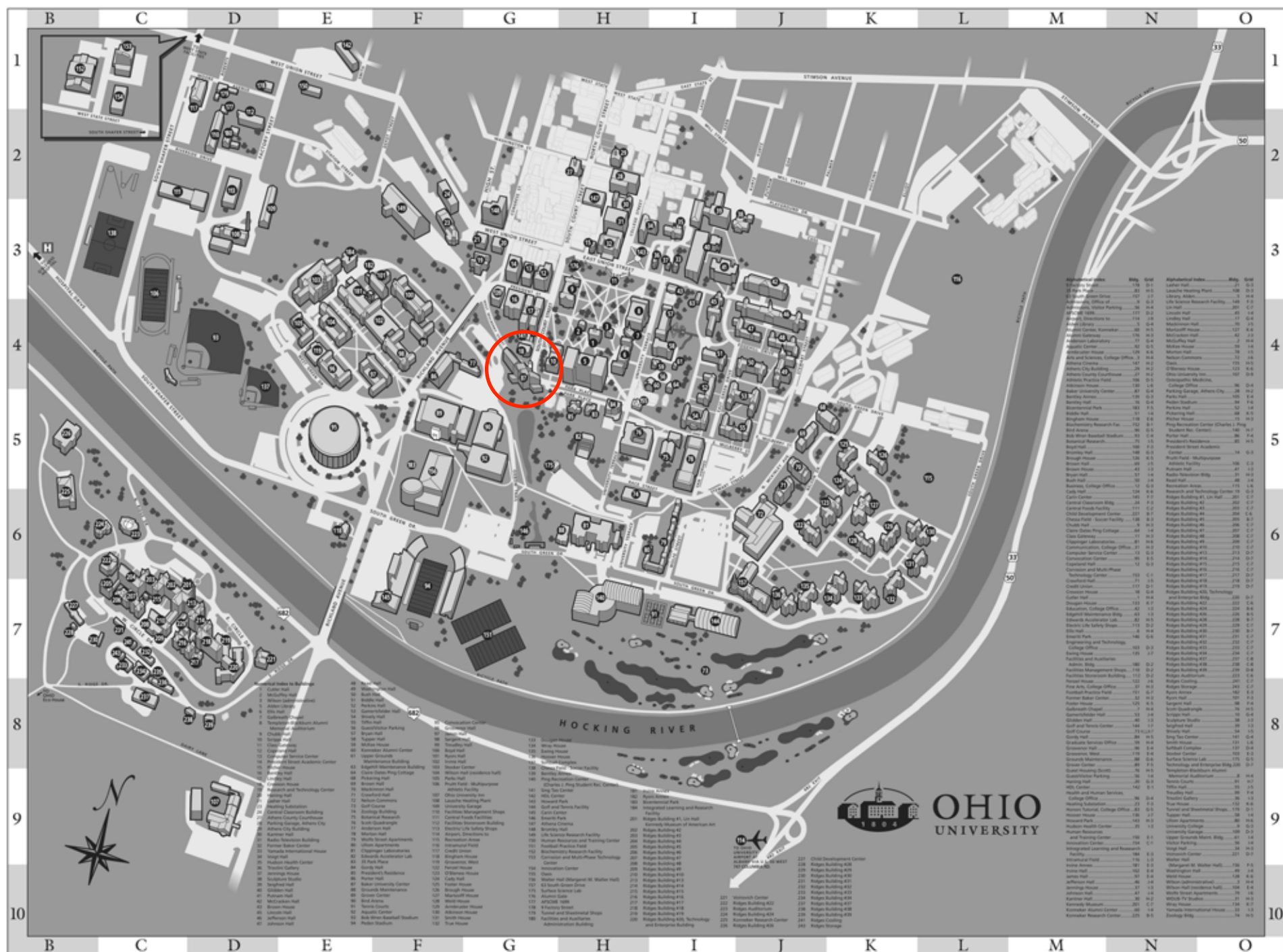
66% Student Fees, 33% Institutional/State

Timeline:

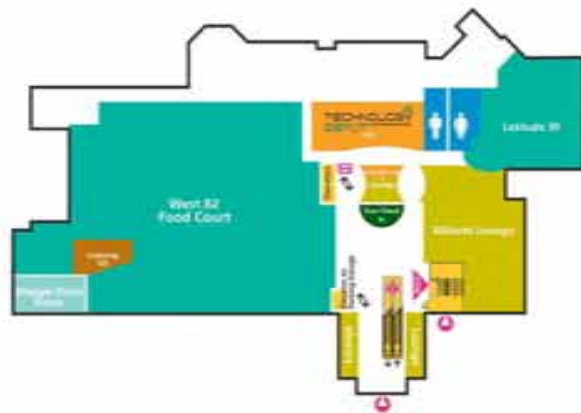
Design Began: 2002; Design Completion: 2004

Year Completion: 2006

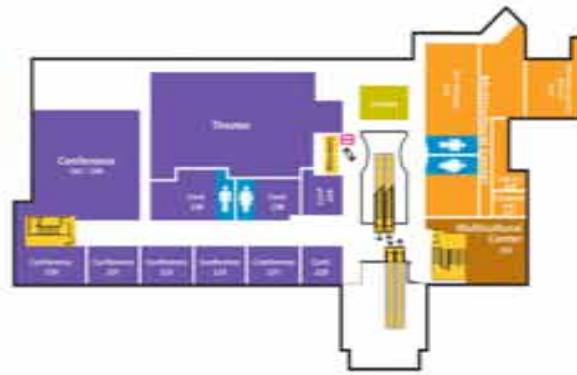




First Floor



Second Floor



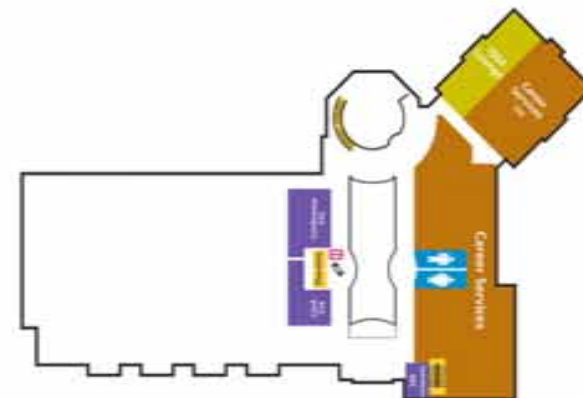
Third Floor

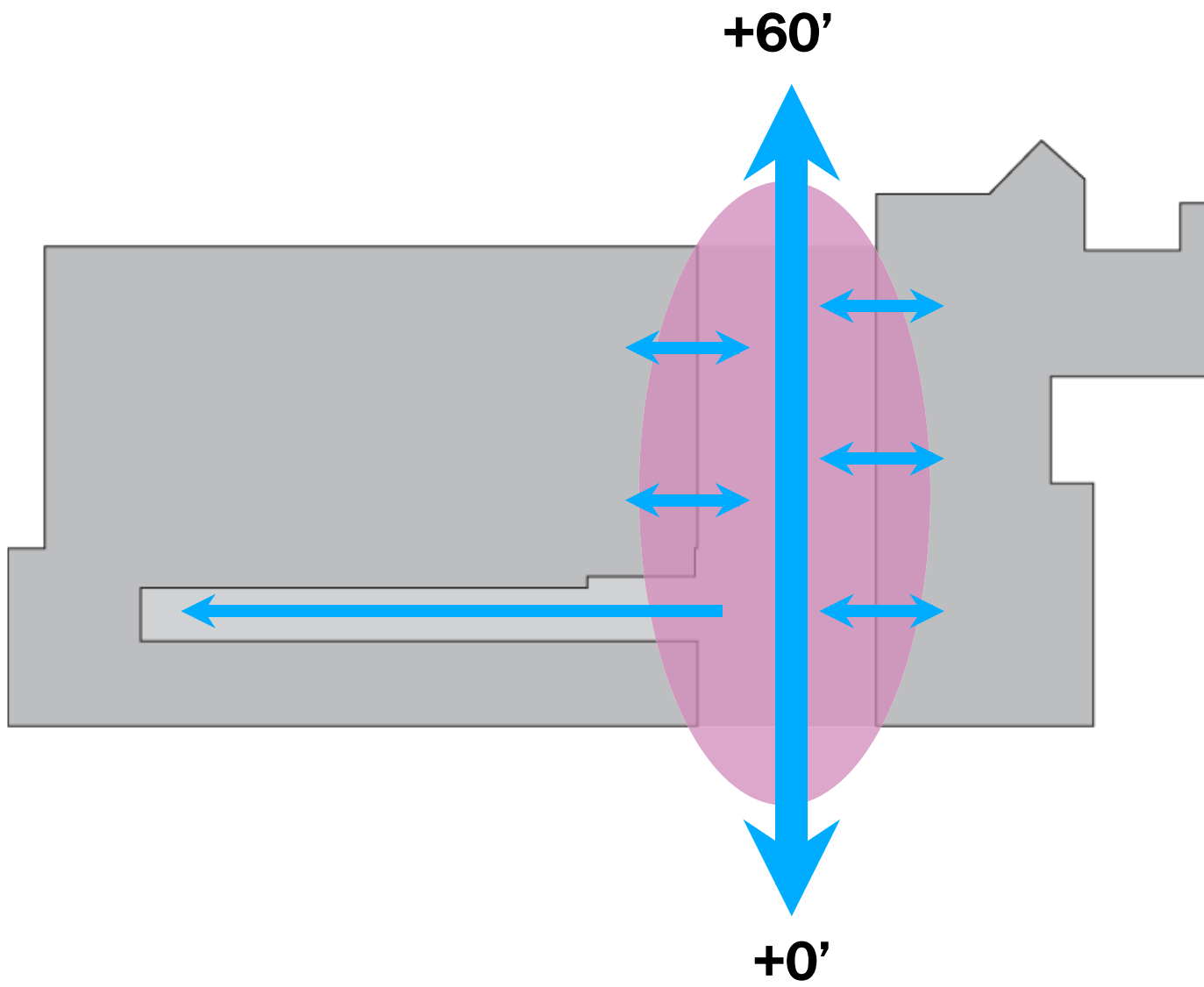


Fourth Floor



Fifth Floor



























THE UNIVERSITY OF AKRON

University of Akron (commuter campus)

Highlights

Exterior was attractive

Natural light/window spaces

Lots of different lounge areas

Nice use of brick, glass, wood and steel

Nice outdoor space on one side of the building

Outdoor seating

Liked the open market type food venue

Lines at all retail spaces (wait to get in and wait to get out)

Small theater (used mainly for movies)

Bookstore inside

Nice bowling alley and billiards space

Concerns

Built conference facilities but parking is too far from facility so nobody wants to book conferences

Low ceilings

No storage space

Traffic flow (long lines at all food vendors and you have to enter the same space you exit – lots of lines and congestion)

Limited program space in a high visible area

Kitchen/food prep areas not thought out (prepare food in main kitchen and move the food upstairs in a service elevator to plate the food for the ballroom)

Faculty Lounge underutilized and waste of space (door serves as a barrier)

Student organization area was way too small

No room for growth

Did not plan for blinds for all the windows (hot and cold throughout the year)

University of Akron

Student Union



Relevance to Erb Memorial Union

- Dining options
- Administrative offices
- Meeting spaces
- Social hub
- Recreational spaces
- Student organization spaces
- Ballroom facilities
- Computer lab
- Copy center
- Retail center



The Gardner Student Union contains a food court; large assembly rooms; conference/meeting rooms; recreational space for bowling, billiards and game room; retail space for bookstore, bank and post office; computer labs; lounge area; student organization office space; and administrative office space. During Phase I of the project, a new wing was constructed at the west end of the existing student center. In the second phase, the existing center was demolished and a new wing built on that site.

Architect:

WTW Architects

Location:

Akron, Ohio

School Type:

Urban

Enrollment:

24,601-Undergraduate; 4,650-Postgraduates

Size:

198,000 square feet

Construction Cost:

\$41,100,000

Funding Source:

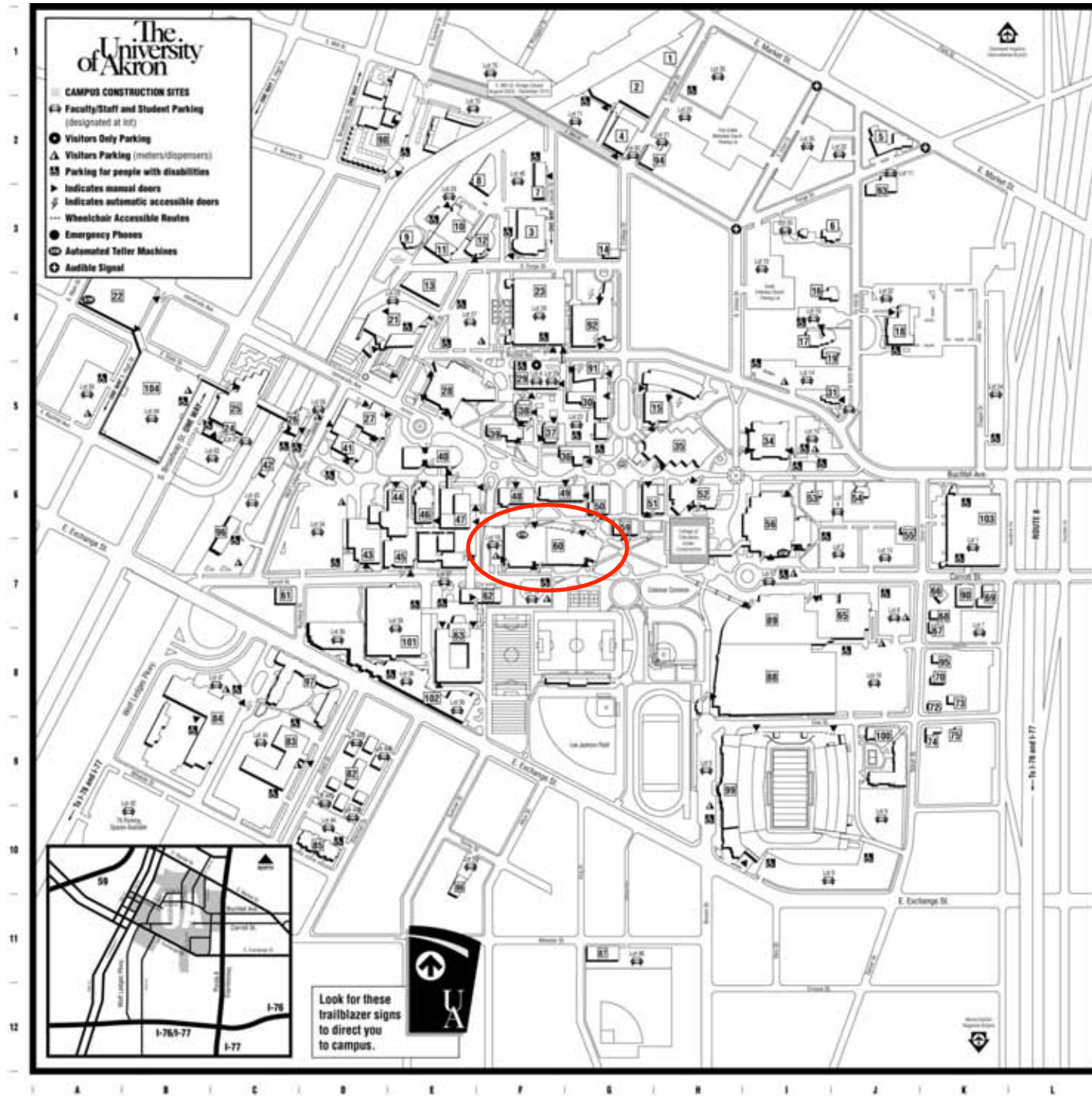
100% Student Fees

Timeline:

Construction Began: 2001

Phase I Completion: 2002

Year Completion: 2004



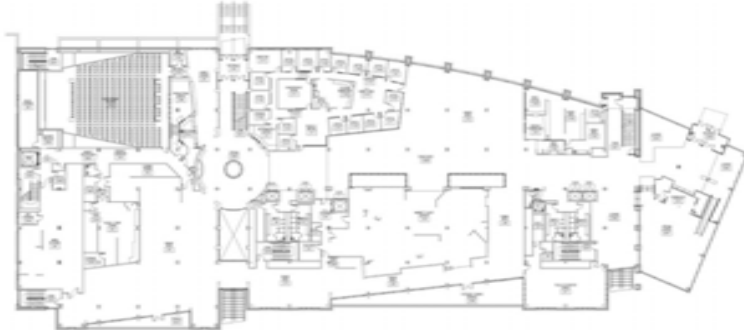
First Floor



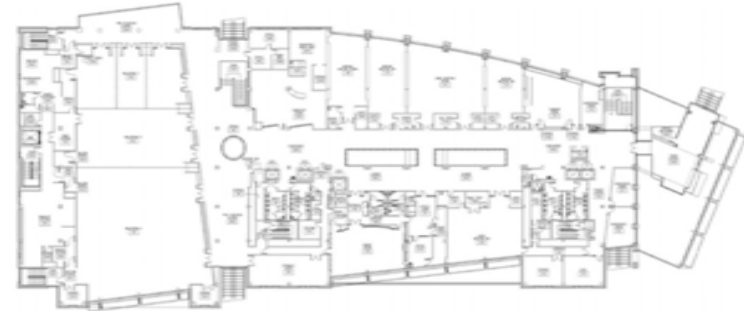
Second Floor



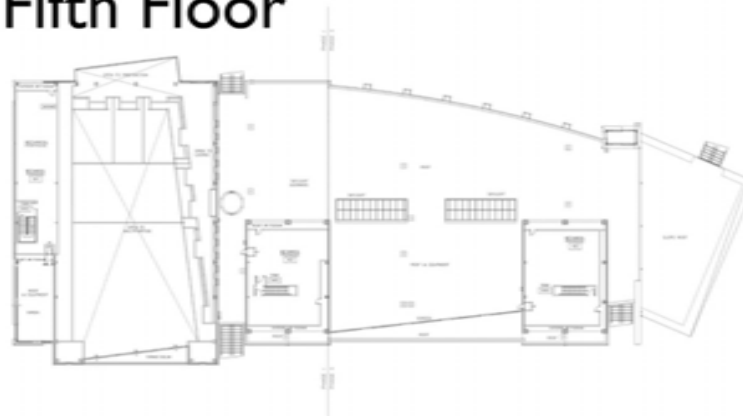
Third Floor

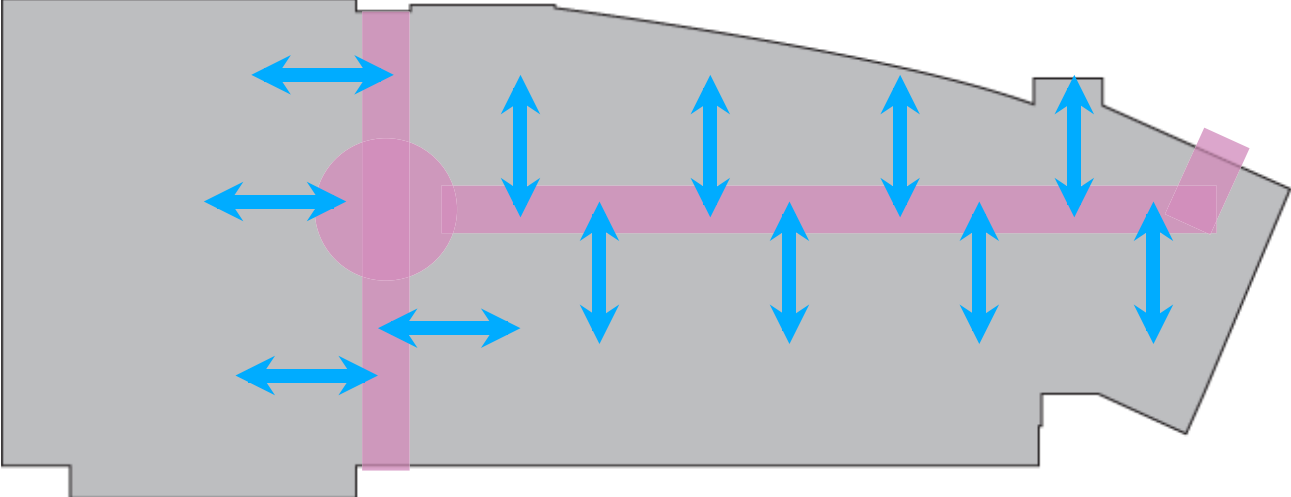


Fourth Floor



Fifth Floor









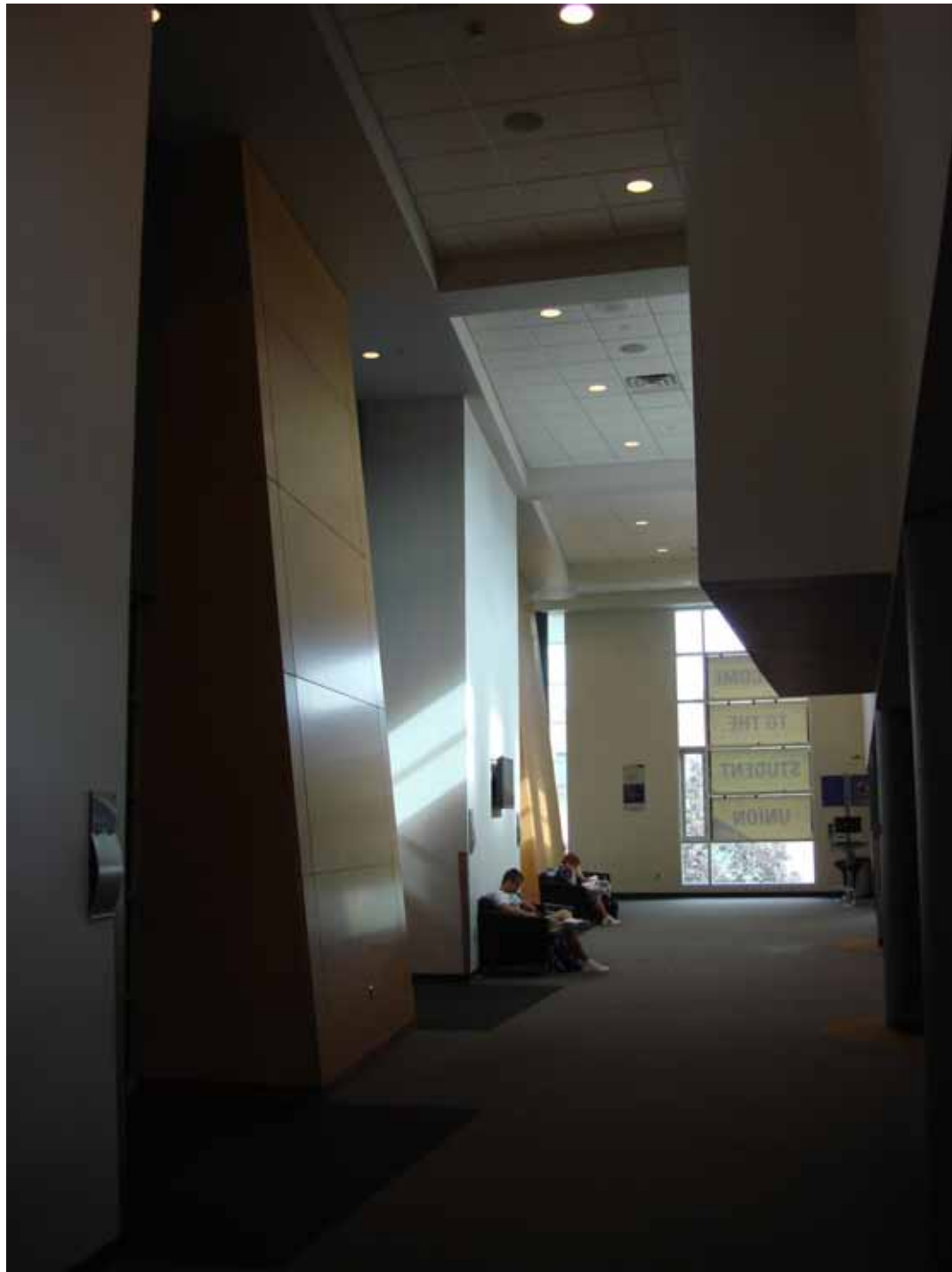


























CLEVELAND STATE UNIVERSITY

Cleveland State University (commuter campus)

Highlights

Nice mix of glass, stone and steel on exterior

Lots of natural light

Nice mix of materials on the inside (brick, glass, steel, wood, etc)

Open atrium

Bookstore inside

Food and pub

Good use of graphics on the white walls

Windows in retail spaces

Nice lounge spaces

Computer lab

Nice outdoor spaces (balcony, courtyard in between the union and library)

Ballroom was inter-changeable

Concerns

Atrium was really large

Was not a comfortable environment (sterile)

Limited program space in a high visible area

Student space was not visible (located on third floor)

No theater

Cleveland State University

CSU Student Center



Relevance to Erb Memorial Union

- Dining options
- Administrative offices
- Meeting spaces
- Social hub
- Recreational spaces
- Student organization spaces
- Ballroom facilities
- Conference facilities
- Computer lab
- Copy center
- Retail center



The new, 138,000 sf student center at Cleveland State University (CSU) will enhance its campus image and create an open connection with the city while offering a wide range of services to students and faculty. Fronting on the main thoroughfare to downtown Cleveland, the center will become the campus' public gateway and begin the second phase of CSU's master plan to integrate the campus with the bustling avenue.

Architect:

Gwathmey Siegel

Location:

Cleveland, Ohio

School Type:

Urban

Enrollment:

10,431-Undergraduate; 6,869-Postgraduates

Size:

138,000 square feet

Construction Cost:

\$55,000,000

Funding Source:

100% Student Fees

Timeline:

Design Began: 2006; Design Completion: 2008

Year Completion: 2010



CLEVELAND STATE UNIVERSITY

Cleveland State University campus core represented by green areas

○ ○ ○ Campus Innerlink: Follow the Dots ○ ○ ○



Key to Buildings
Alphabetical Listing
For Building Updates, visit
www.csuohio.edu/campus_map_tour

PARKING

For current pricing and lot updates, visit
www.csuohio.edu/parking

Map last revised 3/11/11

CSU STUDENT CENTER – FIRST FLOOR



Cleveland State University
Campus Planning
2701 E. 20TH STREET
CLEVELAND, OHIO 44115

CSU STUDENT CENTER – SECOND FLOOR

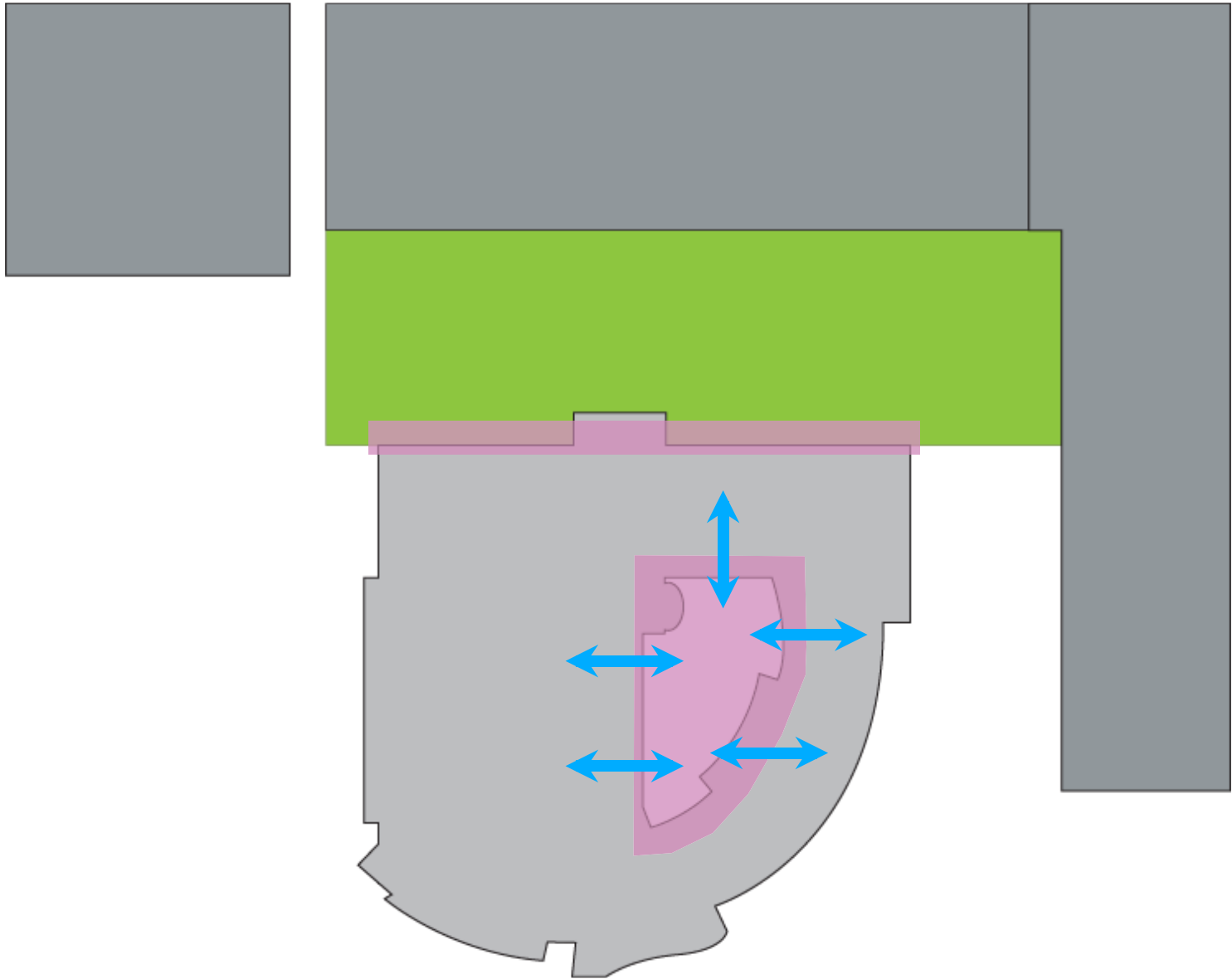


Cleveland State University
Campus Planning
2701 E. 20TH STREET
CLEVELAND, OHIO 44115

CSU STUDENT CENTER – THIRD FLOOR



Cleveland State University
Campus Planning
2701 E. 20TH STREET
CLEVELAND, OHIO 44115

























Dining

Viking Marketplace

Lunch Menu

The Grill
Waffles
Bacon
Hot Sauce
Pasta
Lunch Menu
11:30 - 2:00

More Desserts

Chocolate Brownie
Caramel Apple
Pumpkin Pie
Lunch Menu
11:30 - 2:00

Special Kids Menu

Hot Sauce
Pasta
Lunch Menu
11:30 - 2:00





