

TOPOGRAPHIC SURVEY

FOR THE
UNIVERSITY OF OREGON
OF THE SCHOOL OF MUSIC
LYING IN
NW 1/4 SEC. 5, T. 18S, R.3W, W.M.
CITY OF EUGENE, LANE COUNTY, OREGON
OCTOBER 21, 2015

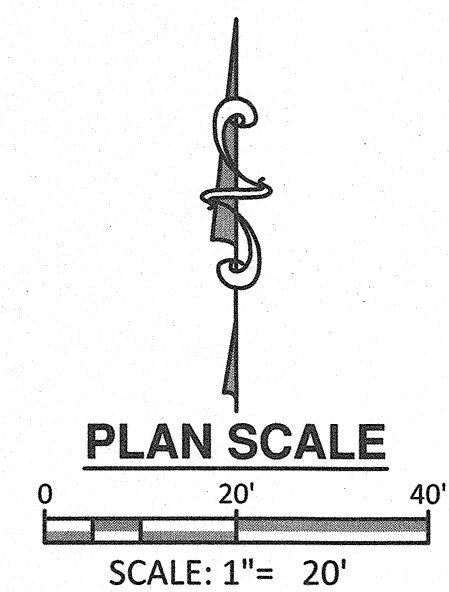
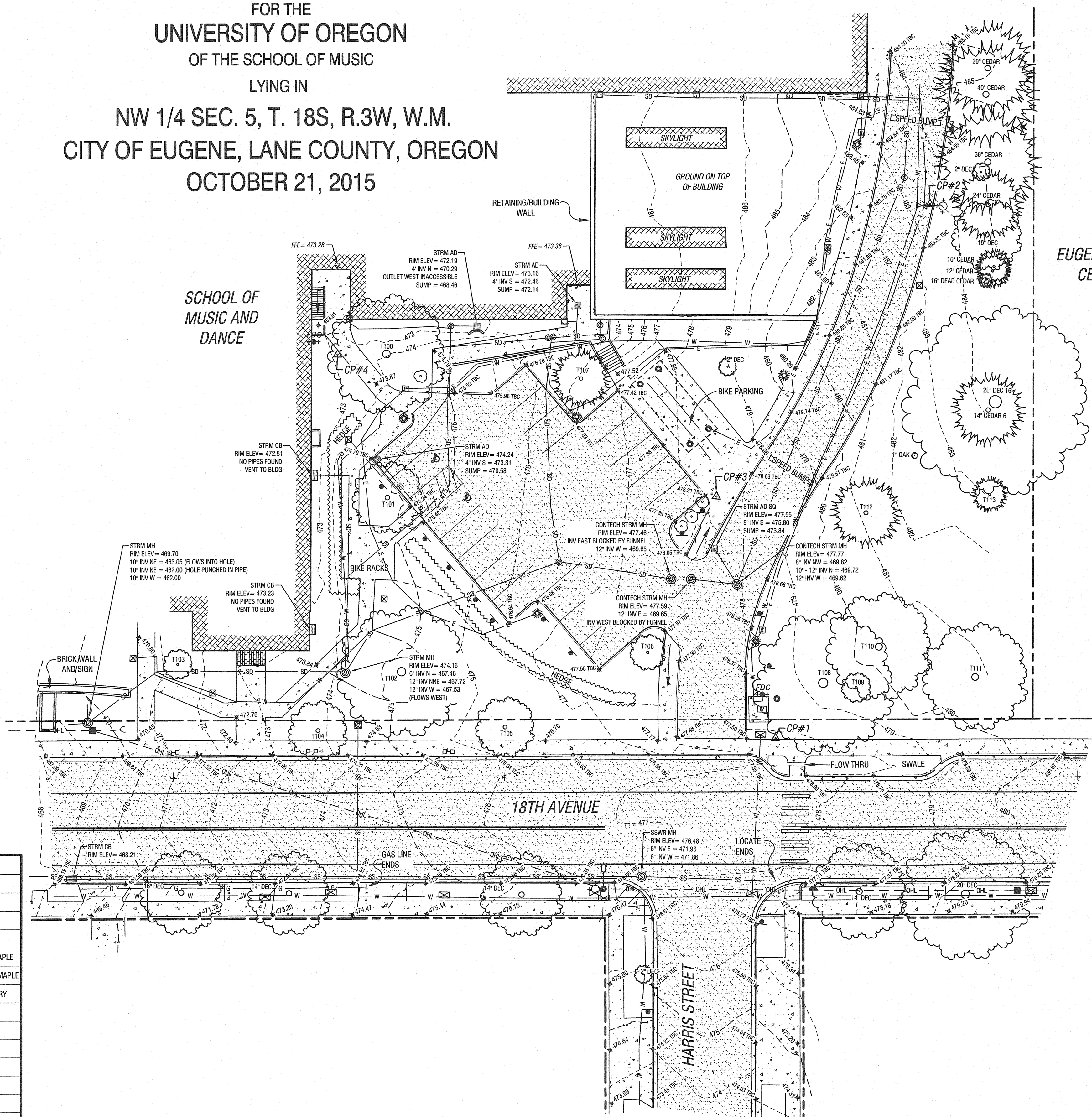
LEGEND:

- SET SURVEY CONTROL POINT (CP)
REFER TO CONTROL POINT TABLE
- PROPERTY LINE
- MAJOR CONTOUR INTERVAL
- MINOR CONTOUR INTERVAL
- HATCH DENOTES BUILDING OUTLINE
- HATCH DENOTES BUILDING OVERHEAD
- HATCH DENOTES ASPHALT PAVEMENT
- HATCH DENOTES CONCRETE
- HATCH DENOTES BRICK PAVERS
- IRON FENCE
- UNDERGROUND ELECTRICAL LINE
- SANITARY SEWER LINE
- STORM DRAIN LINE
- WATER LINE
- OVERHEAD COMBINED UTILITY LINE
- WATER VALVE
- WATER METER
- IRRIGATION VALVE
- WATER VAULT
- FIRE HYDRANT
- FIRE DEPARTMENT CONNECTION
- GAS METER
- GAS VALVE
- UTILITY POLE
- GUY ANCHOR
- LIGHT POLE
- LIGHT POLE WITH ARM
- STREET LIGHT BOX
- ELECTRIC BOX
- AREA DRAIN (SQUARE)
- STREET CATCH BASIN
- ROOF DRAIN
- STORM DRAIN MANHOLE
- SANITARY SEWER MANHOLE
- CLEANOUT
- SIGN
- STEEL POLE
- MAIL BOX
- PARKING METER
- SHRUB
- CONIFEROUS TREE (SIZE AS LABELED)
- BROADLEAF TREE (SIZE AS LABELED)

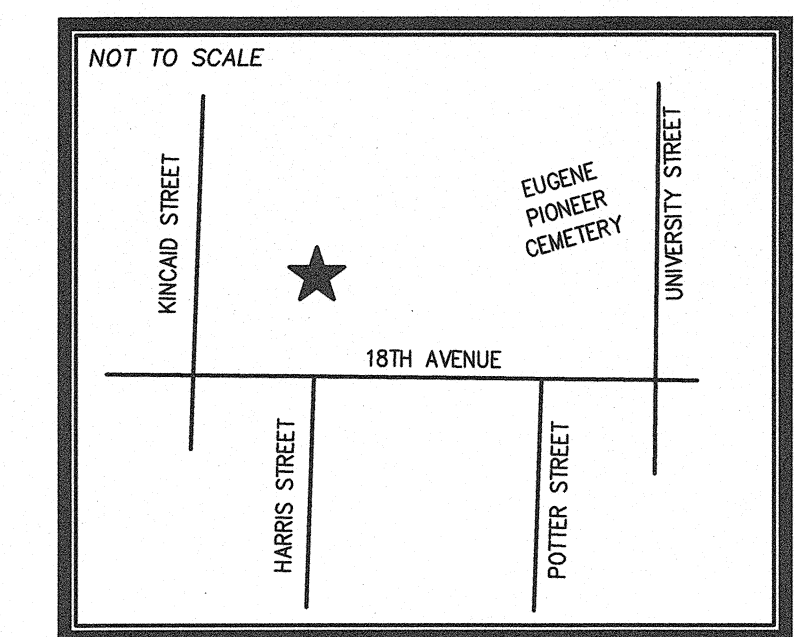
TREE TABLE:

TREE #	DIAMETER	TREE CODE	BOTANICAL NAME	COMMON NAME
T100	24"	LIST	LIQUIDAMBAR STYRACIFLUA	AMERICAN SWEETGUM
T101	2L-12"	COFL	CORNUS FLORIDA	FLOWERING DOGWOOD
T102	42"	LIST	LIQUIDAMBAR STYRACIFLUA	AMERICAN SWEETGUM
T103	6"	COFL	CORNUS FLORIDA	FLOWERING DOGWOOD
T104	6"	ACPLK	ACER PLATANOIDES 'CRIMSON KING'	CRIMSON KING NORWAY MAPLE
T105	6"	ACPSA	ACER PSEUDOPLATANUS 'ATROPURPUREUM'	PURPLELEAF PLANETREE MAPLE
T106	10"	PRSUP	PRUNUS SUBHIRTELLA 'PENDULA'	WEeping HIGAN CHERRY
T107	14"	ABNO	ABIES NORDMANNIANA	NORDMANN FIR
T108	36"	QUPA	QUERCUS ALBA	PIN OAK
T109	6"	ACCI	ACER CIRCINATUM	VINE MAPLE
T110	2L-28"	PRAV	PRUNUS AVIUM	MAZZARD CHERRY
T111	16"	JUNI	JUGLANS NIGRA	BLACK WALNUT
T112	14"	TSHE	TSUGA HETEROPHYLLA	WESTERN HEMLOCK
T113	14"	CHPIP	CHAMAECYPARIS PISIFERA 'PLUMOSA'	PLUME SAWARA CYPRESS

* TREES SHOWN IN TABLE ABOVE ARE DERIVED FROM THE 2006 VERSION OF THE UNIVERSITY OF OREGON ATLAS OF TREES AND FROM INFORMATION PROVIDED FROM THE UNIVERSITY OF OREGON PLANNING DEPARTMENT. TREES NOT SHOWN IN TABLE ARE LABELED WITH COMMON NAME, IF KNOWN, AND DIAMETER.



VICINITY MAP:



CONTROL TABLE:

POINT #	NORTHING	EASTING	ELEVATION	DESCRIPTION
1	5000.000	5000.000	477.70	SET-HUB & TACK
2	5182.551	5032.189	483.53	SET-MAG NAIL W/DISK
3	5078.005	4971.789	478.27	SET-MAG NAIL
4	5111.804	4841.274	473.18	SET-HUB & TACK

MISCELLANEOUS NOTES:

- THE BENCHMARK USED FOR THIS SURVEY WAS CITY OF EUGENE BENCHMARK #SE1014 WITH A PUBLISHED ELEVATION OF 477.01' (NGVD29 DATUM).
- COORDINATES SHOWN ARE BASED UPON AN ASSUMED COORDINATE SYSTEM AND ROTATION. ALL DISTANCES ARE GROUND DISTANCES MEASURED IN INTERNATIONAL FEET.
- THE PURPOSE OF THIS SURVEY IS TO PROVIDE A TOPOGRAPHIC MAP OF THE EXISTING SITE CONDITIONS FOR FUTURE EXPANSION & OTHER IMPROVEMENTS.

UTILITY NOTES:

- THE LOCATION OF UTILITIES SHOWN HEREON ARE FROM OBSERVED EVIDENCE OF ABOVE GROUND APPURTENANCES TOGETHER WITH PUBLIC UTILITY COMPANY AND UNIVERSITY OF OREGON FIELD MARKS.
- BEFORE DIGGING IN THIS AREA, CALL 'ONE-CALL' 811 FOR FIELD LOCATIONS (REQUEST FOR GROUND MARKINGS) OF UNDERGROUND UTILITY LINES.
- LACKING EXCAVATION, THE EXACT LOCATION OF UNDERGROUND FEATURES CANNOT BE ACCURATELY, COMPLETELY AND RELIABLY DEPICTED. WHERE ADDITIONAL OR MORE DETAILED INFORMATION IS REQUIRED, THE CLIENT IS ADVISED THAT EXCAVATION MAY BE NECESSARY.

BALZHISER & HUBBARD
ENGINEERS, INC.

MECHANICAL
CIVIL
SURVEYORS

940 WILLAMETTE STREET,
SUITE 310
EUGENE, OR 97401
P: 541-686-8478
F: 541-343-5303

CLIENT : UNIVERSITY OF OREGON

PROJECT LOCATION : EUGENE, OREGON

PROJECT NO : 8900-006-15	DRAWING : UO BACH FESTIVAL.DWG
DRAWN : APD	SCALE : 1"=20'
CALC : JSM	SHEET : 1 OF 1