











KEY BOARD TRAY





PLEASE DO NOT REMOVE FROM THE VERDI ROOM









Box with a glass illustration and some illegible text.

































All Classical

E A R T H

*Our Global Cultural Community*





Portland

Denver ●

UNITED

Los Angeles

Show your love. Share the music. Spread the word.

Gift Shop



What's on your List?

Check out our Gift Shop!  
→





*All Classical*

PORTLAND

we love this music

## Self-Guided Tour

- 1. Old Portland
- 2. Old Donation Beach
- 3. Old The Taylor and Head Street
- 4. Columbia College East
- 5. Old Market
- 6. Old St. Michaels
- 7. Old City Hall

111 1st Commercial St., 5th Fl.  
Portland, OR 97204  
503.255.2828  
allclassical.org

Interested in buying something?  
Ring the bell and a staff member will be  
with you momentarily





Show your love. Share the music. Spread the word.





## All Classical Portland's mission:

to advance the knowledge of & appreciation for classical music.

to build & sustain culturally vibrant local & global communities.

to reflect the spirit of the Pacific Northwest and

to foster integrity, quality, and innovation in all that we do.









Community Engagement































Roger O. Doyle

Performance Studio





Rogers & Cowley

Performance Studio

MICHELE'S PIANOS



PERFORMANCE  
MGT

















Staff: the staff of All Classical Portland.





"After silence, that which comes nearest  
to expressing the inexpressible is music."

- Aldous Huxley







thebox





EXIT

Celestial community has been the most diverse in history



Portland's mission:  
appreciation for classical music  
local & global communities  
Pacific Northwest and  
innovation in all that we do.



*All Classical*  
PORTLAND  
we love this music

KDAC 89.9  
Portland/Vancouver

KDCC 88.1  
Newport/Lincoln City

KCHR 88.1  
Hood River/The Dalles

KCHR 96.3  
Columbia Gorge East

KDVI 88.5  
Hood River

KDCC 88.1  
Newport/Lincoln City

97 PM  
Columbia Gorge



Like what you hear?

Please consider making a donation to support  
the programming on All Classical Portland.



*All Classical*  
PORTLAND

*All Classical*  
PORTLAND  
Self-Guided  
Tour



CUSTOMIZED Journeys





PORTLAND  
OPERA

BOX OFFICE





Portland Opera exists to serve, uplift our audience by creating high artistic quality that combines beauty and precision.

**PORTLAND OPERA**  
TICKET SERVICE







Wicked

Personal Open exists to support, challenge and uplift our students by creating productions of high artistic quality that celebrate the beauty and breadth of opera.

**WIKI-BILL IS FOR TICKET SERVICES**

For all other general information, please see the website: [www.wiki-bill.com](http://www.wiki-bill.com). For more information, please call our customer service line at 800-848-8484.

**WIKI-BILL IS FOR TICKET SERVICES**

For all other general information, please see the website: [www.wiki-bill.com](http://www.wiki-bill.com). For more information, please call our customer service line at 800-848-8484.



Personal Open exists to support, challenge and uplift our students by creating productions of high artistic quality that celebrate the beauty and breadth of opera.

PORTLAND  
OPERA

BOX OFFICE

COME AND MEET THOSE DANCING ON  
**42ND STREET**  
MICHAEL CURTIZ • MARY MARTIN • ROBERT ALTMAN  
DREW BARRYMORE • PAUL DOOLEY • JUDY GARLAND  
DORIS MERCIER • MARY MARTIN • ROBERT ALTMAN  
OCT 27 - NOV 1, 2015

**Riverdance 20**  
WOLFGANG PETERZ • JAMES HAMILTON  
NOVEMBER 20 - 22, 2015

Service counter area featuring a wooden countertop with a glass display case, a tissue box, and a sign on a stand. The counter is set against a wall with horizontal wood paneling. A person is visible behind the counter.

PORTLAND  
OPERA

RECEPTION





BOX OFFICE



### STAFF EXTENSIONS (1st and 3rd Floors)

#### ADMINISTRATION & FINANCE

Christopher Mattalano, General Director	515
Valeria Ramirez, Chief Operating Officer	269
Maureen Beaudry, Controller	571
Lynne Creary, Disbursements Specialist	570
Jennifer Warren, HR & Accounting Specialist	582
Susan Allen, Executive Assistant	515
Hilar Price, Building Receptionist	100

#### BOX OFFICE & PATRON SERVICES

Eric Steinhauer, Associate Director of Ticketing	259
Linda Pownall, Assistant Box Office Manager	257
Michael Brumage, Box Office Supervisor	256
Sabrina Miller, Box Office Representative	253
Jacqueline Harpole, Box Office Representative	622
Telemarketing Manager	512
BOX OFFICE QUEUE	750

#### BUILDING FACILITY

James Robbins, Systems & Operations Manager	268
---	-----

#### COSTUME SHOP

Frances Britt, Manager	321
Debra Bruneaux, Cutter/Draper	321
[Name], [Title]	321
[Name], [Title]	321
[Name], [Title]	321
[Name], [Title]	321

#### ARTISTIC OPERATIONS

Clare Burrows, Director	595
Aleis Hamilton, Manager of Education & Outreach	261
Nicholas Fox, Chorus Master & Assistant Conductor	517
Bianca Ross, Artistic Ops Coordinator	262
Music Studio	597

#### DEVELOPMENT

Sue Dixon, Director	263
Lacey Rowberg, Major Gifts Officer	572
Celeste Miller, Corp. & Institutional Giving Officer	507
Amy Williams, Donor Relations Officer	601
Kim Landin, Development Associate	581

#### MARKETING & COMMUNICATIONS

Mark Tharks, Director	210
Tracy Wendkus, Assoc Dir Mktg/Director Bwy Mktg	250
Ingrid Arnett, Opera Mktg & Communications Manager	574
Morgan Jones, Group & Corp Sales Manager	251
Julia Taylor, Marketing Assistant	591
Jen Wechsler, Opera Marketing Coordinator	569
Lafree Pluke, Bwy Marketing Assistant	510

#### PRODUCTION

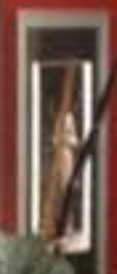
Laura Hassell, Director	516
Jonathan Bearlaw Hart, Technical Director	267
Elizabeth Spottswood, Production Coordinator	514
Production Stage Manager (x599)	503-267-7366
Carla E. Jimenez, Assistant Stage Manager	518
Jon Wanggard, Assistant Stage Manager	513
Production Office - Keller Auditorium	503-417-0590
Production Office - Newmark Theater	503-432-4338
Production Office - [Address]	503-225-1882
Production Office - [Address]	503-295-2725

rev. Aug 2015















NIXON IN  
★  
CHINA

MARBETH

THE FIFTH WAVE



OXFORD  
UNIVERSITY PRESS

Office DEPOT  
Mozart  
Così fan tutti

Office DEPOT  
Pufface's Ode

Office DEPOT  
Mozart  
Die Entführung aus dem Serail  
Abduction from the Seraglio

Office DEPOT  
Mozart  
Così fan tutti

Office DEPOT  
Mozart  
Die Germanen

Office DEPOT  
Mozart  
Le Nozze di Figaro  
The Marriage of Figaro

Office DEPOT  
Mozart  
Die Zauberflöte  
Magic Flute

Office DEPOT  
Offenbach  
Les Contes d'Hoffmann  
Tales of Hoffmann

Office DEPOT  
Puccini  
La Bohème

Office DEPOT  
Puccini  
Madama Butterfly

Office DEPOT  
Puccini  
Tosca

Office DEPOT  
Verdi  
Il Trovatore

Office DEPOT  
Verdi  
Il Trovatore

Office DEPOT  
Verdi  
Il Trovatore

Office DEPOT  
Verdi  
Il Trovatore

Office DEPOT  
Verdi  
Il Trovatore

Office DEPOT  
Verdi  
Il Trovatore

Office DEPOT  
Verdi  
Il Trovatore





Carmen  
Carmen  
Carmen

THE SECRET GARDEN  
THE SECRET GARDEN  
THE SECRET GARDEN

THE SECRET GARDEN  
THE SECRET GARDEN  
THE SECRET GARDEN

THE SECRET GARDEN  
THE SECRET GARDEN  
THE SECRET GARDEN

THE SECRET GARDEN  
THE SECRET GARDEN  
THE SECRET GARDEN

THE SECRET GARDEN  
THE SECRET GARDEN  
THE SECRET GARDEN

THE SECRET GARDEN  
THE SECRET GARDEN  
THE SECRET GARDEN

THE SECRET GARDEN  
THE SECRET GARDEN  
THE SECRET GARDEN

THE SECRET GARDEN  
THE SECRET GARDEN  
THE SECRET GARDEN

THE SECRET GARDEN  
THE SECRET GARDEN  
THE SECRET GARDEN

THE SECRET GARDEN  
THE SECRET GARDEN  
THE SECRET GARDEN

THE SECRET GARDEN  
THE SECRET GARDEN  
THE SECRET GARDEN

THE SECRET GARDEN  
THE SECRET GARDEN  
THE SECRET GARDEN

THE SECRET GARDEN  
THE SECRET GARDEN  
THE SECRET GARDEN

THE SECRET GARDEN  
THE SECRET GARDEN  
THE SECRET GARDEN

THE SECRET GARDEN  
THE SECRET GARDEN  
THE SECRET GARDEN

THE SECRET GARDEN  
THE SECRET GARDEN  
THE SECRET GARDEN

THE SECRET GARDEN  
THE SECRET GARDEN  
THE SECRET GARDEN





[White rectangular label]

Handwritten note: Yucca

[Small white label]

[Small white label]

Cluster of papers and photos held together by yellow clips.

[White rectangular label]

[Small white label]







LEASE CRUTCHER  
**LEWIS**



ViewSonic

ViewSonic

BE  
CORPORATION  
PDCI



























Man in dark jacket and glasses standing on the left side of the frame.

Man in white shirt and dark pants standing near a window in the background.

Stacks of papers and documents on a table in the middle ground.

Roll of paper or blueprint on the table in the middle ground.

Large architectural blueprint spread out on the table in the foreground.

Cardboard shipping box in the foreground with a shipping label.

PRECISION IMAGES  
PRECISION IMAGES  
555 SW 13th Ave  
Portland, OR 97205  
PRECISION IMAGES  
555 SW 13th Ave  
Portland, OR 97205  
PRECISION IMAGES  
555 SW 13th Ave  
Portland, OR 97205













